



## ANTARCTICA DIRECT: FLY THE DRAKE PASSAGE FROM PUERTO NATALES

Experience the wild grandeur of the White Continent in a more efficient, expedient way with our eight, nine and ten-day options. On this new itinerary, bypass the traditional Drake Passage crossing on a two-hour flight to and from Antarctica, and discover all of the highlights without sacrificing the extra time. Travel with a diverse team of experts aboard our intimately scaled National Geographic Explorer and National Geographic Orion, purpose-built for polar exploration. Venture into channels and coves framed by towering peaks. Watch for whales off the bow; Zodiac cruise around enormous icebergs; and hike, kayak and (in November) even possibly cross-country ski or snow-shoe in complete tranquility. Choose an active agenda or surrender to the pleasures of relaxing downtime and shipboard camaraderie. Plus, get top shots with the help of a National Geographic photographer. NOTE: This is an expedition in the truest sense--flexibility is key. Delays and early departures of flights due to inclement weather are common in Antarctica. In the event of a flight adjustment, your expedition team may implement a contingency plan with alternative activities. 9 and 10 day itineraries available, please get in touch for more information.



### ITINERARY

DAY 1 Puerto Natales, Chile

Arrive in Puerto Natales. Originally a small fishing port, the town is nestled on the Last Hope Sound and boasts a stunning view of the sea surrounded by the Cerro Benitez Mountains--the gateway to Torres del Paine. Transfer from the airport to your hotel, where you'll enjoy dinner and attend a briefing on the following day's activities.



Ask your expedition specialist about joining an immersive 5-day pre-voyage extension to explore Torres del Paine National Park, an incredible UNESCO biosphere reserve.

**Arrival Time:** Arrive to the hotel in Puerto Natales by 3:00 p.m. local time.

**Arrival City:** Puerto Natales, Chile

**Meals Included:** Dinner

[DAY 2 Puerto Natales / King George Island / Embark Ship](#)

Following breakfast, check out of the hotel and transfer to the airport for our 2-hour direct flight to King George Island and the thrilling start to our Antarctic adventure. Home to a diverse assortment of wildlife--Weddell and elephant seals, Adelie, chinstrap and gentoo penguins--King George Island also has a human presence. Researchers from a wide range of countries, including the US, Chile, Argentina, and Brazil, call the various stations home. Our flight will land at the Chilean research station where the National Geographic Explorer will be waiting offshore. Board Zodiacs to embark the ship and set sail.

**Meals Included:** Breakfast, Lunch, Dinner

[DAYS 3-6 Exploring Antarctica](#)

With long hours of daylight at this time of year, we have ample opportunities to explore. Our schedule is flexible, allowing us to

take advantage of the unexpected, whether we're watching whales at play off the bow of our ship, hiking alongside penguin highways, or enjoying an evening Zodiac cruise amid porpoising penguins.

While wildlife is magnificent, ice defines the Antarctic. You'll get to know ice up close and personal--from icebergs the size of islands, bergy bits and near-vertical glaciers, to the fragile, nearly invisible layers that have just begun to freeze. One day, we might set out by kayak to encounter towering icebergs at water level; embark on a Zodiac excursion in search of seals and blue-eyed shags; or walk amid thousands of Adelie and gentoo penguins. The next, we might experience the thrill of the ship crunching through pack ice.

Everywhere we go in Antarctica we're surrounded by opportunities to capture uniquely beautiful images. Along the way your expert expedition team will enrich every experience.

**Meals Included:** Breakfast, Lunch, Dinner

[DAY 7 King George Island / Disembark Ship / Puerto Natales](#)

This morning, the ship will be moored off of King George Island once again. Following disembarkation and Zodiac rides to shore, our flight departs the White Continent and returns to Puerto Natales where we overnight at Hotel Costaustralis or Remota Patagonia Lodge (or similar).

**Meals Included:** Breakfast, Lunch, Dinner

[DAY 8 Puerto Natales](#)



Check out of your hotel and transfer to the airport to begin your journey homeward.

Departure Time: Outbound flights from Puerto Natales should depart no earlier than 1:00 p.m. local time (or as late in the day as possible).

Departure City: Puerto Natales, Chile

Meals Included: Breakfast

Please note:

Itineraries are subject to change.



# The Small Cruise Ship Collection

www.small-cruise-ships.com

small-cruise-ships.com

info@small-cruise-ships.com

## YOUR SHIP: NATIONAL GEOGRAPHIC EXPLORER

<b>YOUR SHIP:</b>	<b>National Geographic Explorer</b>
<b>VESSEL TYPE:</b>	<b>Luxury Expedition</b>
<b>LENGTH:</b>	<b>108 meters</b>
<b>PASSENGER CAPACITY:</b>	<b>148 (single &amp; twin cabins)</b>
<b>BUILT/REFURBISHED:</b>	<b>1982 / 2008</b>

\_National Geographic Explorer\_ is a state-of-the-art expedition ship. It is a fully stabilized, ice-class vessel, enabling it to navigate polar passages while providing exceptional comfort. It carries kayaks and a fleet of Zodiac landing craft. An Undersea Specialist operates a remotely operated vehicle (ROV) and sophisticated video equipment, extending access to the underwater world. Public areas : Bistro Bar; Chart Room; Restaurant; Global Gallery; Library, Lounge with full service bar and state-of-the-art facilities for films, slideshows and presentations; Mud Room with lockers for expedition gear, and Observation Lounge. Our "Open Bridge" provides guests an opportunity to meet our Officers and Captain and learn about navigation. Meals : Served in single seatings with unassigned tables for an informal atmosphere and easy mingling. Menu is international with local flair. Cabins : All cabins face outside with windows or portholes, private facilities and climate controls. Expedition Equipment : Zodiac landing craft, kayaks, Remotely Operated Vehicle (ROV), hydrophone, SplashCam, underwater video camera, Crow's Nest remote controlled camera, video microscope, snorkeling gear. Special Features : A full-time doctor, Undersea Specialist, LEX Photo Specialist and Video

Chronicler, Internet Cafe and laundry. Wellness : The vessel is staffed by two Wellness Specialists and features a glass enclosed Fitness Center, outdoor stretching area, two LEXspa treatment rooms



and Sauna.

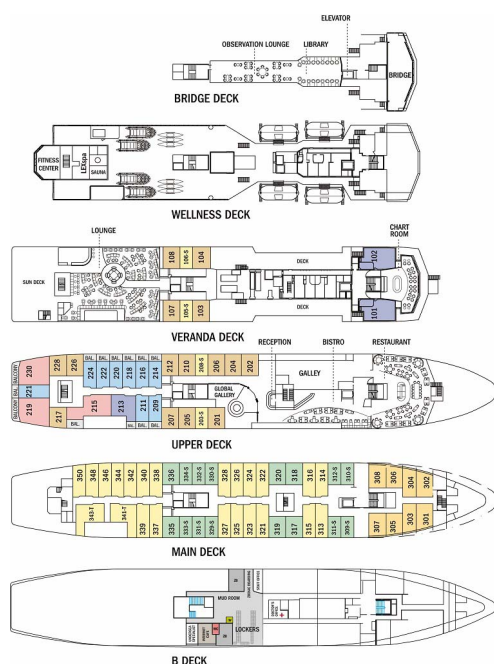
# The Small Cruise Ship Collection

[www.small-cruise-ships.com](http://www.small-cruise-ships.com)

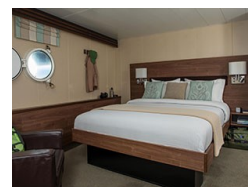
[small-cruise-ships.com](http://small-cruise-ships.com)

[info@small-cruise-ships.com](mailto:info@small-cruise-ships.com)

## INSIDE YOUR SHIP



Category 1. From





# The Small Cruise Ship Collection

[www.small-cruise-ships.com](http://www.small-cruise-ships.com)



[small-cruise-ships.com](http://small-cruise-ships.com)

[info@small-cruise-ships.com](mailto:info@small-cruise-ships.com)

## PRICING

### 17-Feb-2026 to 24-Feb-2026

Category 1. From	£9926 GBP pp
------------------	--------------

### 14-Feb-2027 to 21-Feb-2027

Category 1. From	£9635 GBP pp
------------------	--------------

### 22-Feb-2026 to 01-Mar-2026

Category 1. From	£9723 GBP pp
------------------	--------------

### 25-Nov-2026 to 02-Dec-2026

Category 1. From	£8682 GBP pp
------------------	--------------

### 30-Nov-2026 to 07-Dec-2026

Category 1. From	£8682 GBP pp
------------------	--------------

### 14-Dec-2026 to 21-Dec-2026

Category 1. From	£8884 GBP pp
------------------	--------------

### 19-Dec-2026 to 26-Dec-2026

Category 1. From	£9518 GBP pp
------------------	--------------

### 02-Jan-2027 to 09-Jan-2027

Category 1. From	£9793 GBP pp
------------------	--------------

### 07-Jan-2027 to 14-Jan-2027

Category 1. From	£9793 GBP pp
------------------	--------------

### 21-Jan-2027 to 28-Jan-2027

Category 1. From	£9793 GBP pp
------------------	--------------

### 26-Jan-2027 to 02-Feb-2027

Category 1. From	£9793 GBP pp
------------------	--------------

### 09-Feb-2027 to 16-Feb-2027

Category 1. From	£9635 GBP pp
------------------	--------------



The Small Cruise Ship Collection

[www.small-cruise-ships.com](http://www.small-cruise-ships.com)

**01432 507 280** (within UK)

[info@small-cruise-ships.com](mailto:info@small-cruise-ships.com) | [small-cruise-ships.com](http://small-cruise-ships.com)