

## The Small Cruise Ship Collection

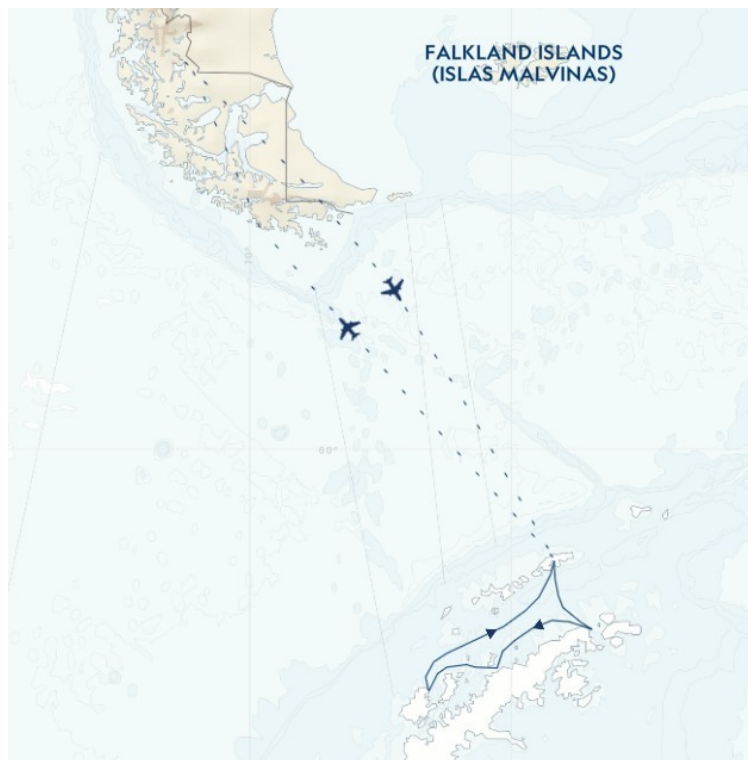
www.small-cruise-ships.com

small-cruise-ships.com

info@small-cruise-ships.com

### ANTARCTICA DIRECT: FLY THE DRAKE PASSAGE 9-DAY

Join the pioneers of Antarctic expedition travel on a thrilling exploration of the continent. Save time by flying directly from South America to the Antarctic peninsula (and back) where we embark the National Geographic Orion, purpose-built for polar waters. Witness the grandeur of this icy wilderness as you kayak among dazzling blue icebergs, sail past dramatic snow-capped peaks and rugged shores, and encounter the region's iconic wildlife—from scores of penguins to whales, seals, and seabirds. A veteran team of naturalists and a National Geographic Photography Expert by your side ensures that you'll have the most unforgettable experience and incredible photos to prove it.



#### ITINERARY

Day 1 Puerto Natales, Chile

Arrive in Puerto Natales. Originally a small fishing port, the town is nestled on the Last Hope Sound and boasts a stunning view of the sea surrounded by the Cerro Benitez Mountains—the gateway to Torres del Paine. Transfer from the airport to your hotel, where you'll enjoy dinner and attend a briefing on the following day's activities.

Ask your expedition specialist about joining an immersive 5-day

The Small Cruise  
Ship Collection

www.small-cruise-ships.com

01432 507 280 (within UK)

info@small-cruise-ships.com | small-cruise-ships.com



## The Small Cruise Ship Collection

[www.small-cruise-ships.com](http://www.small-cruise-ships.com)

[small-cruise-ships.com](http://small-cruise-ships.com)

[info@small-cruise-ships.com](mailto:info@small-cruise-ships.com)

pre-voyage extension to explore Torres del Paine National Park, an incredible UNESCO biosphere reserve.

**\*\*Arrival Time:\*\*** Arrive to the hotel in Puerto Natales by 3:00 p.m. local time.

**\*\*Arrival City:\*\*** Puerto Natales, Chile

### Day 2 Puerto Natales / King George Island, Antarctica / Embark Ship

Following breakfast, check out of the hotel and transfer to the airport for your two-hour direct flight to King George Island and the thrilling start to your Antarctic adventure. Home to a diverse assortment of wildlife, King George Island also has a human presence. Researchers from a wide range of countries, including the U.S., Chile, Argentina and Brazil, call the various stations home. Your flight will land on a gravel runway at the Chilean research station. You will then be transferred to the rocky shoreline, where you will board Zodiacs to embark on the ship and set sail as you begin exploring this amazing region.

### Day 3-7 Exploring Antarctica

With long hours of daylight at this time of year, you'll have ample opportunities to explore. The schedule is flexible, allowing you to take advantage of the unexpected, whether you're watching whales at play off the bow of the ship, hiking alongside penguin highways or enjoying an evening Zodiac cruise amid porpoising penguins.

While wildlife is magnificent, ice defines the Antarctic. You'll get to know ice up close and personal--from icebergs the size of islands, bergy bits and near-vertical glaciers, to the fragile, nearly invisible layers that have just begun to freeze. One day, you might set out by kayak to encounter towering icebergs at water level; embark on a Zodiac excursion in search of seals and

blue-eyed shags; or walk amid thousands of Adelie and gentoo penguins. The next, you might experience the thrill of the ship crunching through pack ice.

Everywhere you go in Antarctica, you'll be surrounded by opportunities to capture uniquely beautiful images. Along the way, your expert expedition team will enrich every experience.

### Day 8 King George Island / Disembark Ship / Puerto Natales

This morning, the ship will be moored off of King George Island once again. Following disembarkation and Zodiac rides to shore, your flight departs the White Continent and returns to Puerto Natales where you overnight at your hotel.

### Day 9 Puerto Natales

Check out of your hotel and transfer to the airport to begin your journey homeward.

**\*\*Departure Time:\*\*** Outbound flights from Puerto Natales should depart no earlier than 1:00 p.m. local time (or as late in the day as possible).

**\*\*Departure City:\*\*** Puerto Natales, Chile

### Please note:

Itineraries are subject to change.

# The Small Cruise Ship Collection

[www.small-cruise-ships.com](http://www.small-cruise-ships.com)

[small-cruise-ships.com](http://small-cruise-ships.com)

[info@small-cruise-ships.com](mailto:info@small-cruise-ships.com)

## YOUR SHIP: NATIONAL GEOGRAPHIC ORION

<b>YOUR SHIP:</b>	<b>National Geographic Orion</b>
<b>VESSEL TYPE:</b>	<b>Luxury Expedition</b>
<b>LENGTH:</b>	<b>103 metres</b>
<b>PASSENGER CAPACITY:</b>	<b>102 (in 53 cabins)</b>
<b>BUILT/REFURBISHED:</b>	<b>2003 / Refurbished 2014</b>

Engineered for maximum comfort and safety, *Orion* is equipped with the latest technology including large retractable stabilizers, sonar, radar, and an ice-strengthened hull. A shallow draft plus bow and stern thrusters provide the convenience of being able to maneuver close to shore. 14 Zodiacs ensure quick disembarkation and offer the ideal transport for up-close exploration. *National Geographic Orion* meets strict specifications for environmental protection and the on board waste management systems meet the stringent Antarctic operational standards enabling us to travel to the most pristine environments. A host of advanced design features and technology ensures sustainable marine environmental practices. *National Geographic Orion* accommodates 102 guests in 53 cabins, including several with balconies. She is spacious and modern, with a variety of public rooms that offer panoramic views of the passing landscape. Friendly and informal, *Orion* fosters a welcoming atmosphere where like-minded guests share in exceptional experiences and enrichment. Her public rooms include a dramatic window-lined main lounge, as well as an observation lounge and library perched at the very top of the ship, with plentiful observation decks. The spacious lounge is

the heart of our expedition community, and is suited for spirited cocktail hours, informative presentations and our nightly tradition of Recap. In addition, a dedicated theater provides a unique setting for specialist presentations or films and slideshows. Both the main dining room and outside buffet easily accommodate all guests at once for open seating dining. On selected nights, weather permitting, our dining room menu is also available on the outside deck. While *Orion* interiors are elegant, life aboard is always casual, with no need for formal clothing. And you'll find shipboard services like laundry, in-room cabled internet, and public-area wifi make packing and traveling more



convenient.

The Small Cruise Ship Collection  
[www.small-cruise-ships.com](http://www.small-cruise-ships.com)

01432 507 280 (within UK)

[info@small-cruise-ships.com](mailto:info@small-cruise-ships.com) | [small-cruise-ships.com](http://small-cruise-ships.com)

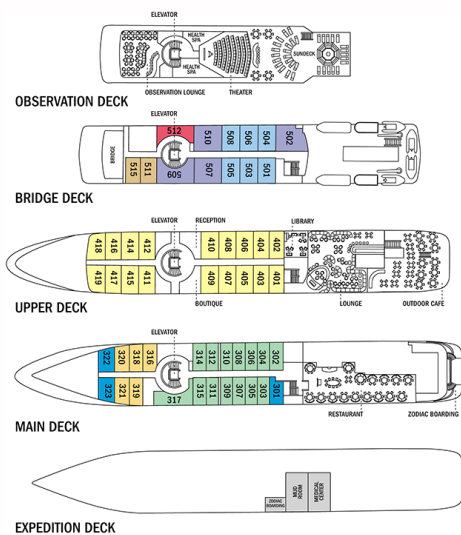
# The Small Cruise Ship Collection

www.small-cruise-ships.com

small-cruise-ships.com

info@small-cruise-ships.com

## INSIDE YOUR SHIP



- Category 1 - B STATEROOM
- Category 2 - A STATEROOM
- Category 3 - JUNIOR SUITE
- Category 4 - DELUXE SUITE
- Category 5 - BALCONY SUITE
- Category 6 - OWNER'S SUITE
- Category 1 - B STATEROOM Solo
- Category 3 - JUNIOR SUITE Solo

Category 01



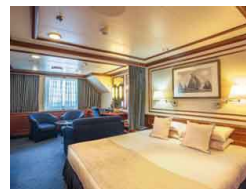
Category 02



Category 03



Category 04



Category 05

Category 06



# The Small Cruise Ship Collection

www.small-cruise-ships.com



small-cruise-ships.com

info@small-cruise-ships.com

## PRICING

### 19-Nov-2026 to 27-Nov-2026

Category 06	£16842 GBP pp
Category 05	£14987 GBP pp
Category 04	£12708 GBP pp
Category 03	£12073 GBP pp
Category 02	£11821 GBP pp
Category 01	£10918 GBP pp

### 25-Nov-2026 to 03-Dec-2026

Category 06	£18628 GBP pp
Category 05	£16544 GBP pp
Category 04	£13987 GBP pp
Category 02	£12991 GBP pp
Category 01	£11977 GBP pp
Category 03	£13273 GBP pp

### 27-Dec-2026 to 04-Jan-2027

Category 06	£37771 GBP pp
Category 05	£34546 GBP pp
Category 04	£32921 GBP pp
Category 03	£29710 GBP pp
Category 02	£22443 GBP pp
Category 01	£20024 GBP pp

### 02-Jan-2027 to 10-Jan-2027

Category 06	£26650 GBP pp
Category 05	£23563 GBP pp
Category 04	£19779 GBP pp
Category 03	£18709 GBP pp
Category 02	£18292 GBP pp
Category 01	£16730 GBP pp

### 08-Jan-2027 to 16-Jan-2027

Category 06	£26653 GBP pp
Category 05	£23564 GBP pp
Category 04	£19778 GBP pp
Category 03	£18708 GBP pp
Category 02	£18290 GBP pp
Category 01	£16730 GBP pp

### 19-Jan-2027 to 27-Jan-2027

Category 06	£28506 GBP pp
Category 05	£25182 GBP pp
Category 04	£21109 GBP pp
Category 03	£19959 GBP pp
Category 02	£19508 GBP pp
Category 01	£17830 GBP pp



# The Small Cruise Ship Collection

www.small-cruise-ships.com



small-cruise-ships.com

info@small-cruise-ships.com

## PRICING

### 25-Jan-2027 to 02-Feb-2027

Category 06	£23768 GBP pp
Category 05	£21046 GBP pp
Category 03	£16766 GBP pp
Category 02	£16397 GBP pp
Category 04	£17708 GBP pp
Category 01	£15021 GBP pp

### 31-Jan-2027 to 08-Feb-2027

Category 06	£26017 GBP pp
Category 05	£22963 GBP pp
Category 04	£19215 GBP pp
Category 03	£18156 GBP pp
Category 02	£17741 GBP pp
Category 01	£16730 GBP pp

### 06-Feb-2027 to 14-Feb-2027

Category 06	£23208 GBP pp
Category 04	£17212 GBP pp
Category 05	£20514 GBP pp
Category 03	£16277 GBP pp
Category 02	£15913 GBP pp
Category 01	£15021 GBP pp

### 28-Nov-2027 to 06-Dec-2027

Category 06	£15761 GBP pp
Category 04	£12122 GBP pp
Category 03	£11560 GBP pp
Category 05	£14131 GBP pp
Category 02	£11334 GBP pp
Category 01	£10540 GBP pp

### 04-Dec-2027 to 12-Dec-2027

Category 06	£16016 GBP pp
Category 05	£14352 GBP pp
Category 04	£12303 GBP pp
Category 03	£11729 GBP pp
Category 02	£11500 GBP pp
Category 01	£10690 GBP pp

### 21-Dec-2027 to 29-Dec-2027

Category 06	£25113 GBP pp
Category 05	£22280 GBP pp
Category 04	£18800 GBP pp
Category 03	£17828 GBP pp
Category 02	£17438 GBP pp
Category 01	£16059 GBP pp

# The Small Cruise Ship Collection

www.small-cruise-ships.com

small-cruise-ships.com

info@small-cruise-ships.com

## PRICING

### 27-Dec-2027 to 04-Jan-2028

Category 05	£17447 GBP pp
Category 04	£14839 GBP pp
Category 06	£19566 GBP pp
Category 03	£14113 GBP pp
Category 02	£13826 GBP pp
Category 01	£12793 GBP pp

### 02-Jan-2028 to 10-Jan-2028

Category 05	£21045 GBP pp
Category 06	£23694 GBP pp
Category 04	£17786 GBP pp
Category 03	£16877 GBP pp
Category 02	£16519 GBP pp
Category 01	£15229 GBP pp

### 25-Jan-2028 to 02-Feb-2028

Category 06	£23335 GBP pp
Category 05	£20725 GBP pp
Category 04	£17526 GBP pp
Category 03	£16633 GBP pp
Category 02	£16282 GBP pp
Category 01	£15015 GBP pp

### 31-Jan-2028 to 08-Feb-2028

Category 06	£21244 GBP pp
Category 05	£18908 GBP pp
Category 04	£16038 GBP pp
Category 03	£15236 GBP pp
Category 02	£14916 GBP pp
Category 01	£13778 GBP pp

### 23-Feb-2028 to 02-Mar-2028

Category 06	£18938 GBP pp
Category 05	£16900 GBP pp
Category 04	£14389 GBP pp
Category 03	£13687 GBP pp
Category 02	£13404 GBP pp
Category 01	£12412 GBP pp

### 29-Feb-2028 to 08-Mar-2028

Category 06	£18938 GBP pp
Category 05	£16900 GBP pp
Category 02	£13404 GBP pp
Category 01	£12412 GBP pp
Category 04	£14389 GBP pp
Category 03	£13687 GBP pp