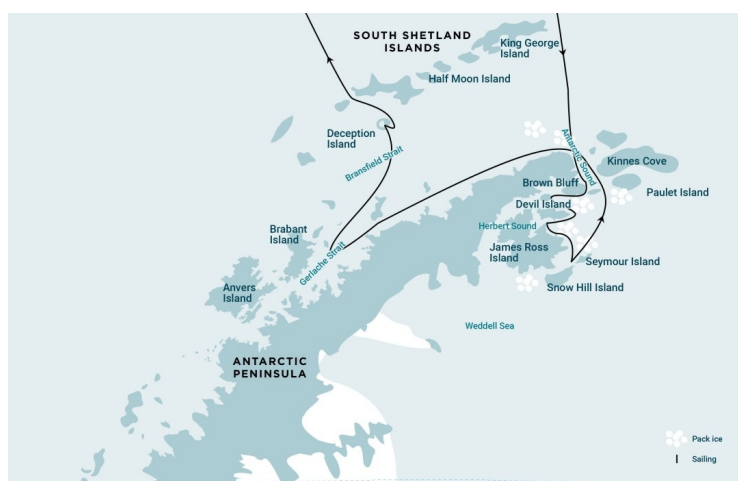




ANTARCTIC PENINSULA - WEDDELL SEA + ACTIVITY: LONG HIKES

Embark on a 10-night expedition to the Antarctic Peninsula and the remote Weddell Sea, a region of towering icebergs, vast ice shelves, and incredible wildlife. Navigate through dramatic polar landscapes where seals, penguins, and whales thrive in one of the most untouched corners of the planet. Led by expert guides, explore icy channels by Zodiac, step onto the frozen continent for unforgettable hikes, and experience the raw beauty of Antarctica up close. Witness the mesmerizing world of the Weddell Sea, where history, ice, and wildlife create an unforgettable polar adventure. Long hikes: - Long walks in Antarctica are designed for small groups of up to 24 passengers, accompanied by at least two expedition staff with experience in this terrain. These walks offer an immersive experience in the pristine polar landscape, requiring participants to be prepared for up to six hours of hiking on semi-rough, rocky and snowy terrain with notable elevation changes. While the pace will be steady and manageable, the conditions can be demanding and change quickly. A good level of fitness and willingness to walk for extended periods are essential. The total duration will vary depending on site conditions and explore the untouched expanses of the Antarctic wilderness. For those who prefer not to join the long hikes, alternative activities or shore landings will be available during this time. ### Single traveller Single travellers can choose between "single occupancy" at a supplement of 1,7 x the Twin or Superior cabin rate , or "sharing basis" in Twin, Triple or Quadruple category at no additional cost.



ITINERARY

Day 1: End of the world, start of a journey

Your voyage begins where the world drops off. Ushuaia, Argentina, reputed to be the southernmost city on the planet, is located on the far southern tip of South America. Starting in the afternoon, you embark from this small resort town on Tierra del Fuego, nicknamed "The End of the World," and sail the mountain-fringed Beagle Channel for the remainder of the evening.

Day 2 - 3: Path of the polar explorers



Over the next two days on the Drake Passage, you enjoy some of the same experiences encountered by the great polar explorers who first charted these regions: cool salt breezes, rolling seas, maybe even a fin whale spouting up sea spray. After passing the Antarctic Convergence - Antarctica's natural boundary, formed when north-flowing cold waters collide with warmer sub-Antarctic seas - you are in the circum-Antarctic upwelling zone.

Not only does the marine life change, the avian life changes too. Wandering albatrosses, grey-headed albatrosses, black-browed albatrosses, light-mantled sooty albatrosses, cape pigeons, southern fulmars, Wilson's storm petrels, blue petrels, and Antarctic petrels are a few of the birds you might see.

Day 4 -5: Exploring the Weddell Sea

Today you enter the wondrous Weddell Sea, a relatively unvisited area in which we hope to carry out activities in Erebus and Terror Gulf. We may also visit such places such as Beak Island and Devil Island, which boast some stunning scenery as well as the pack ice for which the Weddell Sea is famous.

As we continue to explore the area of Erebus and Terror Gulf, we look for new opportunities for landings. You may also visit Vega Island, experiencing the wilderness of Antarctica in its most remote places.

Day 6 - 7: Orleans Strait and Gerlache Strait

Now we sail down the western side of the Antarctic Peninsula, entering the Orleans Strait and the Gerlache Strait. Here we hope to see humpback and orca whales as we sail toward Mikkelsen Harbor for our afternoon activities.

Sites you may visit include:

Danco Island - Activities here may focus on the gentoo penguins nesting on the island, in addition to the Weddell and crabeater seals that can be found nearby.

Neko Harbour - An epic landscape of mammoth glaciers and endless wind-carved snow, Neko Harbour offers opportunities for a Zodiac cruise and landing that afford the closest views of the surrounding alpine peaks.

Paradise Bay - You may be able to take a Zodiac cruise in these sprawling, ice-flecked waters, where there's a good chance you'll encounter humpback and minke whales.

Day 8: Scenes of South Shetland Islands

The volcanic islands of the South Shetlands are windswept and often cloaked in mist, but they do offer subtle pleasures: There's a wide variety of flora (mosses, lichens, flowering grasses) and no small amount of fauna (gentoo penguins, chinstrap penguins, southern giant petrels).

During our visit, we may visit Deception Island, where the ship



can plunge through Neptune's Bellows and into the flooded caldera. Here you find an abandoned whaling station, and thousands of cape petrels - along with kelp gulls, brown and south polar skuas, and Antarctic terns. A good hike is a possibility in this fascinating and desolate volcanic landscape.

As an alternative, you may be able to engage in activities near Half Moon Island. Here chinstrap penguins and Weddell seals often haul out onto the beach near Camara Base, an Argentine scientific research station. Conditions on the Drake Passage determine the exact time of departure.

Day 9 - 10: Familiar seas, familiar friends

Your return voyage is far from lonely. While crossing the Drake, you're again greeted by the vast array of seabirds remembered from the passage south. But they seem a little more familiar to you now, and you to them.

Day 11: There and back again

Every adventure, no matter how grand, must eventually come to an end. It's now time to disembark in Ushuaia, but with memories that will accompany you wherever your next adventure lies.

Please note:

Itineraries are subject to change.



The Small Cruise Ship Collection

www.small-cruise-ships.com

small-cruise-ships.com

info@small-cruise-ships.com

YOUR SHIP: HONDIOUS

YOUR SHIP:

Hondius

VESSEL TYPE:

LENGTH:

PASSENGER CAPACITY:

BUILT/REFURBISHED:

Hondius is the first-registered Polar Class 6 vessel in the world, meeting the latest and highest Lloyd's Register demands for ice-strengthened cruise vessels. Hondius also exceeds the requirements of the Polar Code as adopted by the International Maritime Organization (IMO), allowing you to enjoy the polar regions as much as possible while impacting them as little as possible. Upon completion, Hondius will be the most flexible, advanced, innovative ice-strengthened vessel in the polar regions. It is optimized for exploratory voyages that provide you the utmost first-hand contact with the Arctic and Antarctica. Hotel comfort, expedition class Hondius offers high-quality accommodation for 176 passengers in a range of suites and cabins. The spacious 'Hondius' suite (35 square metres, 377 square feet), six grand suites with balconies (27 square metres, 291 square feet), eight junior suites (19 to 20 square metres, 205 to 215 square feet), eight superior cabins (20 to 21 square metres, 215 to 226 square feet), 11 twin deluxe cabins, (19 to 21 square metres, 205 to 226 square feet), 14 twin window cabins (12 to 14 square metres, 129 to 151 square feet) as well as 28 twin porthole cabins, two triple porthole cabins, and four quadruple porthole cabins that vary in size from 12 to 18

square metres, or 129 to 194 square feet all offer a high level of accommodation. The passenger capacity certificate for Hondius is 196 persons. One deck consists of a large observation lounge and separate lecture room, which are reserved for a wide variety of interactive workshops, exhibitions, and performances particular to Hondius. Though elegantly designed in stylish mid-century modern decor, this vessel holds true to Oceanwide's distinctive cozy and informal atmosphere. Swift & safe ship-to-shore operations It is the philosophy of Hondius' managers to keep sea time as short as possible so that they can focus instead on fast, effective access to shore and near-shore activities. To give you the maximum contact with the nature and wildlife you traveled so far to see, they employ a tough fleet of rigid-hull inflatable Zodiac boats that guarantee swift and safe landing operations for all passengers at the same time. Hondius has two separate gangways and a sheltered indoor Zodiac embarkation platform that can also be used for special outdoor activities, such as kayaking. The fast, flexible, friendly heart of the polar regions The top priority is taking advantage of every wildlife and terrain opportunity as it occurs. To keep the itineraries flexible itineraries and the response time rapid, Hondius is equipped with advanced stabilizers and two main engines capable of powering the vessel up to 15 knots. But Hondius sacrifices no warmth to achieve its keen polar edge: You will have 72 crew and staff members (including expedition and hotel staff) at your service while on board, ensuring that what little time you do spend on the ship you will spend comfortably

The Small Cruise Ship Collection
www.small-cruise-ships.com

01432 507 280 (within UK)

info@small-cruise-ships.com | small-cruise-ships.com



The Small Cruise Ship Collection

www.small-cruise-ships.com



small-cruise-ships.com

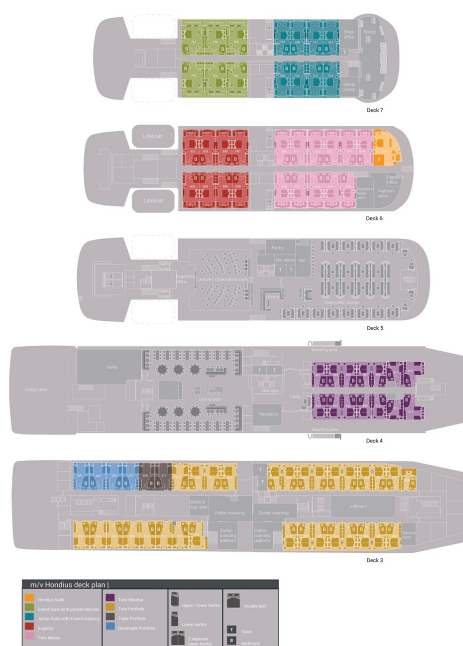
info@small-cruise-ships.com



entertained.

info@small-cruise-ships.com

INSIDE YOUR SHIP



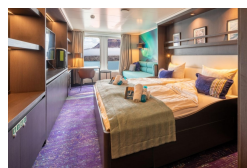
Grand Suite with Private Balcony Junior Suite



Quadruple Porthole



Superior



Triple Porthole

Twin Porthole

Twin Deluxe

Twin Window



The Small Cruise Ship Collection

www.small-cruise-ships.com



small-cruise-ships.com

info@small-cruise-ships.com

PRICING

03-Feb-2027 to 13-Feb-2027

Superior	£11011 GBP pp
Twin Deluxe	£10434 GBP pp
Twin Window	£9471 GBP pp
Twin Porthole	£8278 GBP pp
Triple Porthole	£8278 GBP pp
Quadruple Porthole	£7392 GBP pp
Grand Suite with Private Balcony	£13398 GBP pp
Junior Suite	£11704 GBP pp



The Small Cruise Ship Collection

www.small-cruise-ships.com

01432 507 280 (within UK)

info@small-cruise-ships.com | small-cruise-ships.com