



ANTARCTIC PENINSULA IN DEPTH - FROM USHUAIA TO USHUAIA EXPEDITION CRUISE

Embrace the best of Antarctica and experience the unique flora and fauna of The South Shetland Islands on this life-changing voyage. Test your mettle as you cross the notorious Drake Passage to reach the world's most beautiful ice-filled waters, where magnificent icebergs creak, and breaching minke and humpback whales swim gracefully. Breathe in icy air as you cross the southern seas, and capture captivating memories that will last a lifetime.



ITINERARY

DAY 0 Pre Cruise

DAY 1 USHUAIA

Nestled in the foothills of the snow-capped Martial Range, Ushuaia's colourful streets and mismatched buildings cascade from the imposing mountains before coming to an abrupt halt at the shores of the Beagle Channel. As one of the world's southernmost cities, Ushuaia carries its 'end of the world' reputation well. The moody weather and dramatic surroundings certainly help. Board your boutique ship before departing for your journey through one of the most captivating wilderness regions of the world.



DAY 2-4 DAY AT SEA

Spend your day at sea enjoying the facilities available onboard. Head to the sauna, get in a workout in the state-of-the-art gym or relax in the hot tub while taking in incredible views along the way. If you prefer to learn a little more about your surroundings, listen to an informative talk or have a chat with one of our knowledgeable experts.

DAY 5-10 ANTARCTIC PENINSULA

Among captivating glaciers, majestic icebergs and snowy islands, the Antarctic Peninsula is where most visitors to the White Continent live their Antarctica dream. It's the most accessible part, with scientific bases and incredible scenery, like the photogenic Lemaire Channel. Shore excursions might include Petermann Island, where among Adelie penguins, blue-eyed shags and skuas, huge, lumbering elephant seals haul out.

DAY 11-12 DAY AT SEA

Sea days are rarely dull. Take the time to sit back and let the world go by. The ship's observation decks provide stunning

views of the passing ocean. A day at sea gives you the opportunity to mingle with other passengers and share your experiences of this incredible trip or head to our library which is stocked full of reference books. Get an expert's view in one of our on-board lectures or perhaps perfect your photography skills with invaluable advice from our onboard professional photographers.

DAY 13 USHUAIA

Nestled in the foothills of the snow-capped Martial Range, Ushuaia's colourful streets and mismatched buildings cascade from the imposing mountains before coming to an abrupt halt at the shores of the Beagle Channel. As one of the world's southernmost cities, Ushuaia carries its 'end of the world' reputation well. The moody weather and dramatic surroundings certainly help. Board your boutique ship before departing for your journey through one of the most captivating wilderness regions of the world.

Please note:

Itineraries are subject to change.



The Small Cruise Ship Collection

www.small-cruise-ships.com

small-cruise-ships.com

info@small-cruise-ships.com

YOUR SHIP: DIANA

YOUR SHIP: Diana

VESSEL TYPE:

LENGTH:

PASSENGER CAPACITY:

BUILT/REFURBISHED:

Launched in 2023, SH Diana provides elegant and spacious 5-star accommodation for 192 guests in 96 spacious staterooms and suites, the vast majority with large balconies. Operated by an onboard team of 140 she provides a high level of personal service, exploring the Mediterranean and its famous sites of antiquity. Now sit back, relax and take a moment to get to know this amazing new ship, purpose-designed for our unique cultural expedition cruises. Named after the Ancient Roman goddess of light, the moon, hunting and the wilderness, SH Diana has been specially designed for worldwide cruising to explore the most inspiring and inaccessible places on earth. Building on the outstanding amenities of her sister ships, she adds a dedicated Multifunctional Room next to the Observation Lounge, a Private Dining Room for special occasions, and two tenders which bring guests a comfortable alternative to Zodiacs for expedition landings. A Polar Class 6 ice-strengthened hull combines with extra-large stabilisers to make your journey as comfortable as possible. SH Diana has been designed for immersive experiences, with extensive outside deck areas, multiple observation points and bright, open and relaxing public spaces with unobstructed views. The pleasure and safety of our

guests is paramount at all times, cared for by our attentive crew and seasoned expedition leaders. Cutting edge hygiene technology protects the health of all on board to the highest standards and includes air conditioning with UV sanitisation systems. SH Diana's 96 staterooms, including 11 suites, are each a superbly comfortable home from home and all feature panoramic sea views, a flame-effect fireplace, original works of art, plush couches, premium pocket sprung mattresses, en-suite bathrooms with glass-enclosed rain showers, and Egyptian cotton towels, bathrobes and sheets. A pillow menu offers customised head and neck comfort during rest, while a large flat screen TV, espresso machine with Illy premium coffee, tea making facilities with the finest Kusmi teas, and a minibar with refreshments enhance relaxation at any time. In-room dining is of course available at all hours. Wheelchair access Guests who use wheelchairs must bring their own, as we have only a small number of wheelchairs stored onboard for emergencies. To ensure ease of movement on the ship, wheelchairs and mobility aids must be no wider than 65cm. All mobility or medical equipment brought on board must be capable of being carried safely and must be declared before sailing. To ensure that all guests can safely evacuate during an emergency, guests requiring a wheelchair can only be accommodated in our ADA-accessible cabins. We offer an Oceanview and a Balcony stateroom on Diana. These staterooms are specifically designed to be completely ADA compliant and have a fully operable wheelchair-access wet unit. Diana has two lifts, serving every passenger deck apart from the Stargazing top deck, which is, therefore, more difficult to access, as are the Aft Marina and

The Small Cruise Ship Collection
www.small-cruise-ships.com

01432 507 280 (within UK)

info@small-cruise-ships.com | small-cruise-ships.com



Swan's Nest forward observation platform. Also, we don't have special equipment to access the swimming pool, jacuzzi, or sauna. Otherwise, the ship is entirely at your disposal. Many of the expeditions ashore in remote places are by Zodiac. Boarding these boats and returning aboard can present challenges for wheelchair users, as can navigating uneven terrain. These challenges are by no means always insurmountable, though, and our highly experienced crew is trained to provide reliable advice and assistance. They will make every effort to ensure wheelchair-using guests enjoy a memorable experience at each destination. Our general guidance, however, is to recommend wheelchair users travel with a companion for their ease and enjoyment. If you prefer to remain aboard, our panoramic interiors and ample open decks ensure an immersive, intimate experience of your inspiring



surroundings.



small-cruise-ships.com

info@small-cruise-ships.com

INSIDE YOUR SHIP

Stateroom Category:

Oceanview D4

14 (18m²)

●

Balcony D5

12 (18m²)

●

Balcony M5

25 (18m²)

●

Balcony D6

29 (18m²)

●

Junior Suite

4 (24m²)

●

Suite

4 (30m²)

●

Premium Suite

2 (30m²)

●

Ship Specifications:

Guest Capacity

209

Crew

101

No. of Decks

9

Staterooms

98

Length

400.7m (1243ft)

Breadth

39.1m (124ft)

Gross Tonnage

12,205

Service Speed

12.5 knots

1st Guest Capacity

▲

Connecting

—

Staterooms

▲ 419, 635

Wheelchair Accessible

—

Staterooms

—

Propulsion

—

Registered

Hybrid Diesel

Lifboats

Electric, Polar Class PC-6

Foodbeats

Parasols

Tenders

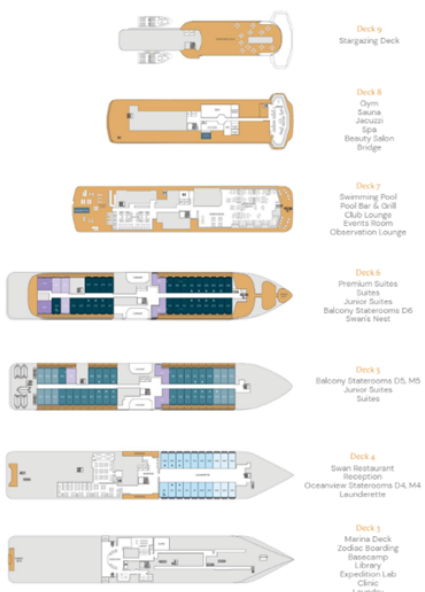
2 (fully closed)

—

14 MMS

—

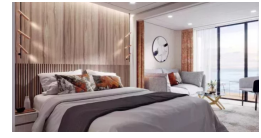
2



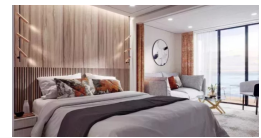
Balcony D5



Balcony D6



Balcony M5



Junior Suite



Oceanview D4



Oceanview M4



Premium Suite

Suite



The Small Cruise Ship Collection

www.small-cruise-ships.com



small-cruise-ships.com

info@small-cruise-ships.com

PRICING

04-Dec-2025 to 16-Dec-2025

Balcony D5	£11516 GBP pp
Junior Suite	£17279 GBP pp
Suite	£17942 GBP pp
Premium Suite	£19676 GBP pp
Oceanview M4	£9680 GBP pp
Balcony M5	£12128 GBP pp
Balcony D6	£12689 GBP pp
Oceanview D4	£9221 GBP pp

11-Mar-2027 to 25-Mar-2027

Suite	£17179 GBP pp
Balcony D5	£11669 GBP pp
Premium Suite	£19625 GBP pp
Balcony M5	£12129 GBP pp
Oceanview M4	£10195 GBP pp
Oceanview D4	£9685 GBP pp

03-Mar-2026 to 15-Mar-2026

Balcony D5	£14984 GBP pp
Premium Suite	£25490 GBP pp
Suite	£23297 GBP pp
Oceanview M4	£12638 GBP pp
Balcony M5	£15800 GBP pp
Oceanview D4	£11975 GBP pp

23-Feb-2027 to 09-Mar-2027

Junior Suite	£16159 GBP pp
Balcony D6	£13965 GBP pp
Balcony M5	£13305 GBP pp
Balcony D5	£12795 GBP pp
Oceanview M4	£11159 GBP pp
Premium Suite	£21465 GBP pp
Suite	£18809 GBP pp
Oceanview D4	£10649 GBP pp



The Small Cruise Ship Collection

www.small-cruise-ships.com

01432 507 280 (within UK)

info@small-cruise-ships.com | small-cruise-ships.com