

## The Small Cruise Ship Collection

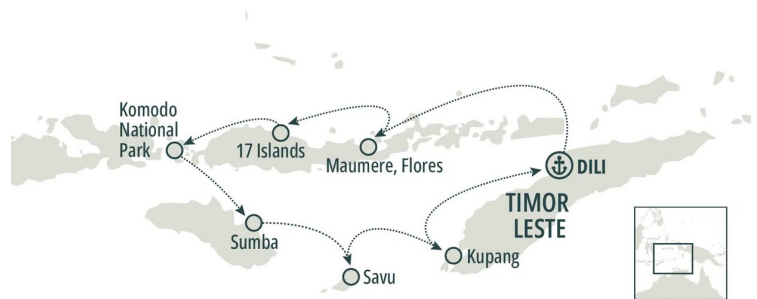
www.small-cruise-ships.com

small-cruise-ships.com

info@small-cruise-ships.com

## ANCIENT RITUALS & LIVING DRAGONS - A 9-NIGHT CRUISE TO EAST TIMOR

Welcome to your trans-Timor Sea expedition--where ancient megalithic ceremonies meet spectacular marine parks, and every island reveals traditions shaped by isolation and ancestral wisdom. Over the next 9 nights, you'll witness the spectacular Pasola festival where skilled horsemen gallop at full speed while flinging wooden spears, explore pristine limestone formations rising from crystalline waters, and walk among Komodo dragons in their natural habitat. This isn't cultural tourism--you'll participate in traditional ceremonies at megalithic sites unchanged for millennia, join ikat weaving demonstrations using techniques passed through generations, and swim among coral gardens protecting extraordinary marine biodiversity. Each morning brings new adventures as we cross from Southeast Asia's youngest nation to Australia's tropical frontier. You'll discover islands where most inhabitants trace their ancestral lineage back several hundred years, explore traditional villages featuring impressive thatched-roof houses marked by buffalo skull ceremonial tombs, and experience how ancient animistic beliefs continue influencing daily life despite outside religious influences. From snorkelling vibrant coral reefs to witnessing living cultural traditions, every encounter connects you with communities whose genuine warmth and ancestral connections have remained largely unchanged for centuries. Our small expedition community of just 30 guests ensures meaningful cultural exchanges and intimate wildlife encounters. This is expedition travel bridging ancient cultures with modern nations: respectful, transformative, and utterly fascinating. Your trans-Timor Sea adventure begins in young Timor-Leste and concludes in tropical Australia.



### ITINERARY

Day 1 Dili, Timor Leste - Portuguese colonial heritage

Board Paspaley Pearl in Southeast Asia's youngest nation, where Portuguese colonial heritage blends with independence resilience. Visit the iconic Cristo Rei statue overlooking the Timor Sea while exploring museums documenting the remarkable 20-year struggle for independence and traditional Tais markets showcasing ancestral weaving methods.

Day 2 At Sea - Cultural experiences and traditional societies

Connect with expedition community during our crossing toward Indonesia's eastern islands as cultural experts prepare you for encounters with intact traditional societies. Learn about megalithic ceremonies, textile creation, and animistic beliefs while understanding how geographic isolation preserved cultural practices unchanged for centuries.

Day 3 Maumere, Flores - Village tours

The Small Cruise Ship Collection

www.small-cruise-ships.com

01432 507 280 (within UK)

info@small-cruise-ships.com | small-cruise-ships.com



## The Small Cruise Ship Collection

[www.small-cruise-ships.com](http://www.small-cruise-ships.com)

[small-cruise-ships.com](http://small-cruise-ships.com)

[info@small-cruise-ships.com](mailto:info@small-cruise-ships.com)

Meet the Sikka people whose culture blends indigenous traditions with Portuguese-influenced Catholicism. Join village tours witnessing stunning ikat weaving demonstrations creating bold geometric patterns telling ancestral stories, observing life centered around traditional "Sa'o" clan houses with characteristic high-peaked roofs preserving cultural continuity.

#### Day 4 17 Islands Marine Park - Secluded beaches and caves

Explore 24 pristine islands featuring stunning limestone formations scattered across crystalline waters. Board expedition vessels to discover secluded beaches with powdery white sand, explore dramatic karst caves, and snorkel vibrant coral gardens while most islands remain uninhabited sanctuaries for nesting seabirds.

#### Days 5 - 6 Komodo National Park

Spend two full days exploring environments protecting the world's largest lizards while discovering dramatic landscapes and snorkelling coral reefs teeming with over 1,000 fish species. Visit Pink Beach—one of only seven such coloured beaches worldwide—experiencing remarkable convergences of terrestrial and marine biodiversity.

#### Day 7 Sumba - Festival and village exploration

Witness the spectacular Pasola festival where skilled horsemen gallop at full speed while flinging wooden spears in ancient rituals. Explore traditional villages featuring impressive thatched-roof houses and ceremonial tombs marked with buffalo skulls, experiencing authentic animistic culture resisting outside religious influences for generations.

#### Day 8 Savu - isolated island ceremonies

Discover an isolated island where most inhabitants know ancestors' names spanning several hundred years. Visit ancient megalithic ceremonial complex at Namata village while witnessing traditional textiles showcasing sophisticated patterns embodying complex cultural symbolism passed through countless generations of master artisans.

#### Day 9 Kupang, West Timor - Port city exploration

Explore this bustling port city blending Portuguese and Dutch colonial heritage with modern development. Tour vibrant markets showcasing unique eastern Indonesian cuisine while walking streets where historical buildings create fascinating architectural contrasts in this important regional transportation hub.

#### Day 10 Dili, Timor Leste - Portuguese colonial heritage

Conclude your expedition in South-east Asia's youngest nation, where Portuguese colonial heritage blends with independence resilience. Visit the iconic Cristo Rei statue overlooking the Timor Sea while exploring museums documenting the remarkable 20-year struggle for independence, carrying memories of extraordinary cultural exchanges.

#### Please note:

Itineraries are subject to change.

The Small Cruise Ship Collection

[www.small-cruise-ships.com](http://www.small-cruise-ships.com)

01432 507 280 (within UK)

[info@small-cruise-ships.com](mailto:info@small-cruise-ships.com) | [small-cruise-ships.com](http://small-cruise-ships.com)



## The Small Cruise Ship Collection

[www.small-cruise-ships.com](http://www.small-cruise-ships.com)

[small-cruise-ships.com](http://small-cruise-ships.com)

[info@small-cruise-ships.com](mailto:info@small-cruise-ships.com)

## YOUR SHIP: PASPALEY PEARL

**YOUR SHIP:** Paspaley Pearl

**VESSEL TYPE:**

**LENGTH:**

**PASSENGER CAPACITY:**

**BUILT/REFURBISHED:**

PASPALEY PEARL marks a milestone in the development of boutique expedition travel, offering a benchmark-setting standard of excellence in the Asia Pacific region. As a modern boutique expedition vessel in the Kimberley featuring private balconies, we have the ability of reaching exotic destinations previously inaccessible by larger vessels. You're invited to ignite your sense of discovery, all whilst travelling in comfort and safety that has been designed to create the smallest possible footprint, with a philosophy of empowering local people and creating ambassadors for the destinations visited. Designed to feel like your home away from home Marrying PASPALEY's heritage of over 80 years in the Kimberley and Northern Australia with PONANT's 35-year history of luxury expedition travel, PASPALEY PEARL emerges as the embodiment of comfort and adventure. Featuring 15 staterooms and suites and hosting a maximum of 30 guests per voyage, PASPALEY PEARL emerges as the newest and only boutique expedition motor yacht in the Kimberley with private balconies. The perfect place to relax while exploring \_Main Dining, Lounge and Bar\_ Nestled on the Ocean Deck is our main dining area, lounge, and bar. As our skilled chefs craft your locally-inspired dinner, take a moment for a

pre-dinner drink before being spoiled with the finest produce Australia has to offer. If you're interested in exploring some of PASPALEY's exquisite offerings, you'll be delighted by their showcase of the world's most beautiful pearls, available for purchase as a cherished memento of your time on board. \_Outdoor Dining, Lounge and Bar\_ When journeying through the tropics, immersing yourself in the outdoors becomes essential. Indulge in breakfast and lunch daily within a relaxed yet refined setting. With two expansive dining tables and abundant lounges, relish the idea of dining amidst the natural surroundings you explore. Craving a refreshing drink after a day of exploration? Our friendly staff at the Outdoor Bar have you covered. The Outdoor Lounge doubles as the perfect space for afternoon briefings with your expedition team, ensuring you receive all the information needed for the following day's adventure. \_Sun Deck Lounge and Jacuzzi\_ Bask in the sunshine on the Sun Deck, furnished with sun beds, lounges, and an 8-person jacuzzi. Whether you prefer reading a book under the shelter of the protective shade cloth or engaging in conversations with newfound friends, the Sun Deck promises a haven of pure relaxation. \_Sunset Lounge\_ Located ahead of the bridge, you can savour panoramic views rivaling those of the captain at the Sunset Lounge. Order a drink from one of the bars downstairs and relax as you witness some of the most breathtaking sunsets you've

The Small Cruise Ship Collection

[www.small-cruise-ships.com](http://www.small-cruise-ships.com)

01432 507 280 (within UK)

[info@small-cruise-ships.com](mailto:info@small-cruise-ships.com) | [small-cruise-ships.com](http://small-cruise-ships.com)



The Small Cruise  
Ship Collection

[www.small-cruise-ships.com](http://www.small-cruise-ships.com)

[small-cruise-ships.com](http://small-cruise-ships.com)

[info@small-cruise-ships.com](mailto:info@small-cruise-ships.com)



ever seen.



The Small Cruise  
Ship Collection

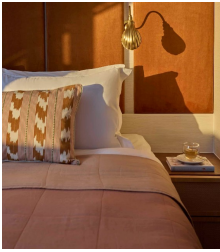
[www.small-cruise-ships.com](http://www.small-cruise-ships.com)

[small-cruise-ships.com](http://small-cruise-ships.com)

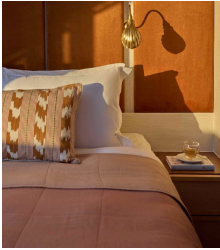
[info@small-cruise-ships.com](mailto:info@small-cruise-ships.com)

## INSIDE YOUR SHIP

Horizon Suite



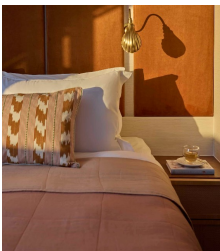
Ocean Double Stateroom



Ocean Stateroom

Ocean Twin Stateroom

Pearl Suite





The Small Cruise  
Ship Collection

[www.small-cruise-ships.com](http://www.small-cruise-ships.com)

[small-cruise-ships.com](http://small-cruise-ships.com)

[info@small-cruise-ships.com](mailto:info@small-cruise-ships.com)

## PRICING

12-Dec-2026 to 21-Dec-2026

Pearl Suite	£13499 GBP pp
Ocean Stateroom	£8999 GBP pp
Ocean Twin Stateroom	£8249 GBP pp
Ocean Double Stateroom	£7999 GBP pp
Horizon Suite	£11249 GBP pp