



The Small Cruise Ship Collection

www.small-cruise-ships.com

small-cruise-ships.com

info@small-cruise-ships.com

ANCIENT CIVILISATIONS, FROM ITALY TO GREECE IN LUXURY

As the cradle of ancient Greek, Roman and Phoenician civilisations, a link between peoples and a cultural crossroads, the Mediterranean embodies the fascinating encounter between East and West, where cultures have blended and intermingled for millennia. _Le Champlain_ invites you on a 11-day journey between the Eternal City and the City of the Gods to discover the riches of the Mediterranean, its ancient remains, legendary tales and magnificent coastline, in late autumn, far from the crowds, when the exceptional archaeological sites regain some of their millennial calm. Throughout your journey, you will benefit from an excursion included per person per port of call, to choose from a selection offered by PONANT. During this cruise, visit the National Museum of Magna Graecia in Reggio Calabria; explore the archaeological site of Delphi from Itea; or discover the ruins of Mycenae and Epidaurus from Nafplio. The diversity of experiences on offer promises you intense and varied moments (to discover the full range of excursions, go to the itinerary tab). From Civitavecchia, you will head for the Amalfi Coast, the jewel of Southern Italy, where you will visit Salerno, a superb little town renowned for its _Duomo_. In the southernmost part of "the Boot", you sail off the coast of Calabria with a stopover in Reggio Calabria. You can stroll along the _lungomare_ against the imposing backdrop of Mount Etna. In Catania, discover the many baroque monuments that helped the city earn its status as a UNESCO World Heritage Site. In Puglia, Gallipoli, meaning "beautiful town" in Greek, reveals its Hellenic origins and offers up its singular atmosphere, where life is good. _Le Champlain_ will then cross the Ionian Sea to Parga, its first port of call in Greece. Fall under the spell of this charming fishing port,

dominated by a fortress built by the Normans in the 14th century. You will then sail to the Peloponnese, to discover Katakolon. From the port, you can get to Olympia, a UNESCO World Heritage site whose ruins bear witness to past grandeur. You arrive in the small port of Itea from where it is possible to visit the mythical site of Delphi or even the Hosios Loukas monastery, both of which are UNESCO World Heritage Sites. After your mythical and remarkable crossing of the Corinth Canal, you will arrive in Nafplio. It is an opportunity to discover the mythical sites of Epidaurus and Mycenae, respectively an ancient theatre and a pre-Hellenic city, both of which are UNESCO World Heritage Sites. Then you stop off at Hydra, a small island of old-worldly charm where motorised traffic is banned. Athens, the mythical city dominated by the Acropolis and its monuments, which form the most extraordinary architectural and artistic ensemble bequeathed to the world by Ancient Greece, marks the end of this

The Small Cruise
Ship Collection
www.small-cruise-ships.com

01432 507 280 (within UK)

info@small-cruise-ships.com | small-cruise-ships.com

The Small Cruise Ship Collection

www.small-cruise-ships.com

small-cruise-ships.com

info@small-cruise-ships.com



Generating a veritable explosion of intense emotions, the province of Salerno fascinates and enchants travellers. Its fascinating history will lead you to the extraordinary archaeological site of Pompeii, whose sprawling ruins provide a grandiose and moving vision of what a Roman city looked like in Imperial times. The city which was frozen in time under the ashes from the eruption of Mont Vesuvius offers you its peerless historical and cultural wealth, as well as the unique beauty of its location, which has earned it classification as a UNESCO World Heritage Site.

Day 3 - Reggio di Calabria

At the southern tip of the Italian boot, Reggio di Calabria guards the eastern shore of the Strait of Messina. From the lungomare, the sea front promenade, there are magnificent views over Sicily, a little over 3 km away, and Etna. Rebuilt after the 1908 earthquake, Reggio is set out in a grid pattern and has Art Nouveau and Belle Époque architecture that add to its charm. And the fragrance of bergamot, the citrus fruit that dominates the region's confectionery and perfumery. A visit to the National Archaeological Museum is a must. It is one of the most important in Italy and among its collections are the famous Riace Bronzes, the stunning Greek statues dating from the 5th century BC that were found off the coast in 1972.

Day 4 - Catania, Sicily

Sicily's second city Catania is dominated by the majestic silhouette of Mount Etna. Nourishing and devastating at the same time, this giant crowned with smoke rings brought about

exceptional odyssey.

ITINERARY

Day 1 - Civitavecchia (Roma)

Built on an Etruscan site, between the Tyrrhenian sea and the Monti della Tolfa, Civitavecchia respires the dolce vita. This very modern and easy going town combines art and history with panache. You can also visit superb historical sites like Fort Michelangelo or the Cathedral of Saint Francis of Assisi. Just 80 kilometres from Rome, the town is a beautiful first step to the Italian capital.

Day 2 - Salerno



The Small Cruise Ship Collection

www.small-cruise-ships.com

small-cruise-ships.com

info@small-cruise-ships.com

the destruction of the city at the end of the 17th century. Catania was then rebuilt in the late Baroque style, and the many monuments of this epoch have earned its status as a UNESCO World Heritage Site. The baroque churches of the harmonious Via dei Crociferi perfectly illustrate the riches of this architectural heritage. During your stop, be sure to visit Saint Agatha Cathedral with its apses made of lava stones, and its square decorated with a fountain of the Elephant, the animal which allegedly has the power to calm the fury of Mount Etna ...

Day 5 - Gallipoli

Gallipoli, which comes from the Greek *kalle polis*, meaning beautiful town, is very aptly named. Located on the heel of the boot, the town known as "the pearl of Puglia" has many attractions. The whiteness of its façades recalls its Greek origins while its architecture echoes its multiple influences. Its old town, perched on a limestone island, concentrates the cultural heritage of this city with a thousand faces, alternately a Roman colony, then Byzantine, the property of the Popes, Norman, under the rule of Taranto... By itself, it tells the story of the different civilisations of the Mediterranean Sea.

Day 6 - Parga

An ancient port in the Epirus region, picturesque Parga is located on the western coast of the Greek mainland. Ancient classical ruins and the Venetian citadel bear witness to the town's colourful history and the diverse influences that shaped it. Take the time to discover this ancient fishing village built like an amphitheatre, by strolling along the picturesque maze of

pedestrian streets lined with small, typical Greek houses decorated with flowers and many lively taverns.

Day 7 - Katakolon

This picturesque village stretches along the Ionian sea in the west of the Peloponnese. Its main harbour offers a vast panorama of the coastline's wooded hillsides. Dazzling white, the church of Saint-Nicolas houses a selection of sumptuous icons. You can also pay a visit the archaeological site of Olympus on the slopes of Mount Kronos.

Day 8 - Itea

Tucked away in the Gulf of Corinth, this little port is situated in continental Greece, north-west of Athens. Take an easy stroll along the old cobblestone quays, while gazing at the summits encircling the Bay of Itea. We wouldn't be surprised if you are tempted by a visit to the Delphi Sanctuary. The sanctuary is located on a plateau on the slope of Mount Parnassus, just ten kilometres from Itea. A listed UNESCO World Heritage site, this is a once-in-a-lifetime experience whose ancient ruins are surrounded by steep mountains.

Day 8 - Crossing the Corinth Canal

The Corinth Canal cuts through the Isthmus of Corinth, turning the Peloponnese into an island as it separates the region from the Greek mainland. Inaugurated in 1893, the canal is a little over six kilometres long and enables merchant vessels and



The Small Cruise Ship Collection

www.small-cruise-ships.com

small-cruise-ships.com

info@small-cruise-ships.com

passenger to avoid a long 400-km detour around the peninsula. The two sides of the canal reach a height of approximately fifty metres. From the exterior decks, don't miss this unique opportunity to watch the ship as it navigates along the narrow strip of water encased between tall, ochre cliffs. What an experience!

Day 9 - Nafplion

The engaging town of Nafplion is staggered up green hillsides of the Argolic Gulf, to the east of the Peloponnese. Do not be surprised by its extremely varied cultural heritage. Some of the must-see visits are the ancient agora on the plateau of Akronafplia, Italianate arcades in Syntagma square as well as the baroque fortress of Palamidi on a hillside of the same name. At the top of the hill, views of the gulf and the surrounding mountains are simply awesome. If you want to chill out by the water's edge, walk along the Arvanitia promenade to a beautiful creek in the shade of cedars and cypresses.

Day 10 - Hydra

This unusual gem belonging to the Saronic islands is located to the east of the Peloponnese. There are no cars here. Named after the island, the harbour town is layered up the slopes of a mountainous bay. You may be surprised to see beautiful stone mansions. These are traditional here, as are the multi-coloured caiques along the quays. Further along the shore, you will discover the Historical Archives Museum. Collections from Athens National History Museum are exhibited in the elegant villa Koundouriotis.

Day 11 - Athens

The Greek capital city is located on the edge of the Saronic gulf, in the east of the country. It bears a plural name in reference to the first villages that surround the Acropolis. You will be enchanted by the rocky plateau presided by its monuments listed as UNESCO World Heritage. In the city below, you can visit some of the liveliest districts in Athens: Plaka, with its maze of colourful streets, and where, in the evenings the drifting aroma of moussaka and garlic prawns will tickle your taste buds. The National Archaeological museum and the Cycladic Art Museum are also some of the city's key attractions and allow visitors to discover Athens' cultural past.

Please Note:

Itineraries are subject to change.

The Small Cruise
Ship Collection

www.small-cruise-ships.com

01432 507 280 (within UK)

info@small-cruise-ships.com | small-cruise-ships.com



The Small Cruise Ship Collection

www.small-cruise-ships.com

small-cruise-ships.com

info@small-cruise-ships.com

YOUR SHIP: LE CHAMPLAIN

YOUR SHIP: Le Champlain

VESSEL TYPE:

LENGTH:

PASSENGER CAPACITY:

BUILT/REFURBISHED:

Featuring innovative and environmentally-friendly equipment, elegantly designed cabins, spacious suites with large windows, and lounge areas that open onto the outside, this new limited-capacity yacht boasting just 92 cabins and suites will offer you a truly unique cruising experience. As the first ship in a new series, Le Champlain will embody the unique atmosphere that is the cruise line's hallmark: a subtle blend of refinement, intimacy and comfort. Aboard this ship that flies the French flag, you will experience the incomparable pleasure of an intimate cruise, with the possibility of exploring an ever-increasing range of destinations in an ethnic-chic ambiance with luxury service. Experience a luxurious setting where the accent is on authenticity and passion for travel. **RESTAURANTS** As it is an essential part of French culture, gastronomy will naturally have pride of place aboard this new ship. Through its two restaurants, Le Champlain will invite you on a journey to elegance and epicureanism. In a relaxed atmosphere, a first dining area located on Deck 3 and able to seat 70 will serve grilled meats daily, along with a variety of salads and desserts. To the back of Deck 4, you will find a 260 m² panoramic restaurant which can accommodate all of our passengers in a single sitting. Designed

differently to that on our other ships, this dining area, which opens onto the outside, will have a buffet of salads, desserts and cheeses at your disposal. Our discreet and attentive crew will provide table service for hot meals. **PUBLIC AREAS** Like Le Boreal and its sisterships, Le Champlain has many common areas that are designed and equipped to meet all of your needs while preserving the intimacy of each passenger. A 140 m² reception area includes: A reception/concierge desk, An excursions desk, The ship's administrative services, The sales office, manned by our Guest Relations Officer, Our 50 m² boutique which sells clothing, jewellery, beauty products, postcards and various accessories, Toilets accessible to passengers with reduced mobility. A new hydraulic platform with adjustable height provides: Easier boarding than on any other cruise ship, Easier Zodiac embarkation and disembarkation for expeditions, Easier access to the sea for swimming and practising various water sports such as kayaking or paddle-boarding. A pool deck offering: A pool with a panoramic view, equipped with a counter-current swimming system, A pleasant solarium, An outdoor bar and lounge with armchairs and sofas. A 200 m² main lounge which can accommodate all of our passengers to share convivial moments and to host activities organised during the day or evening. Lastly, a theatre that seats 188, equipped with: The latest sound and lighting technology, A LED wall as the stage backdrop, for the projection of high-resolution images and videos. Please click the following links to read more about Ponant and the other Ponant

The Small Cruise
Ship Collection
www.small-cruise-ships.com

01432 507 280 (within UK)

info@small-cruise-ships.com | small-cruise-ships.com



The Small Cruise
Ship Collection

www.small-cruise-ships.com



small-cruise-ships.com

info@small-cruise-ships.com



cruise ships.

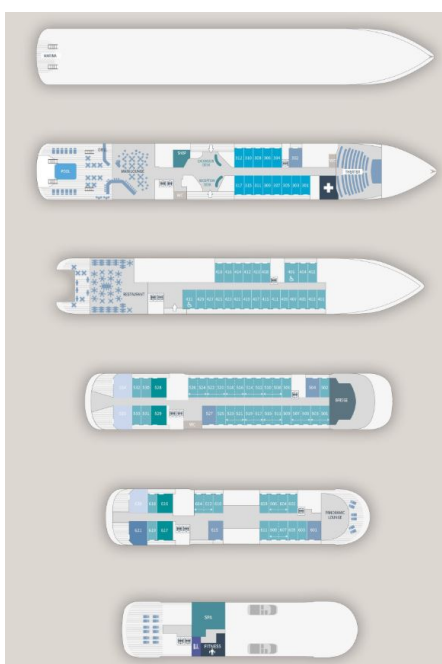
The Small Cruise Ship Collection

www.small-cruise-ships.com

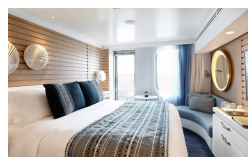
small-cruise-ships.com

info@small-cruise-ships.com

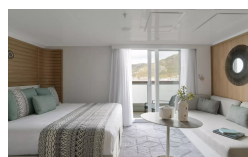
INSIDE YOUR SHIP



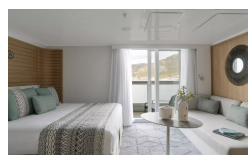
Deluxe Stateroom



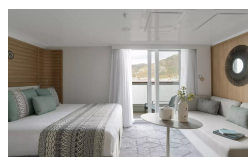
Deluxe Suite Deck 3



Deluxe Suite Deck 4



Deluxe Suite Deck 5



Deluxe Suite Deck 6

Grand Deluxe Suite Deck 5

Grand Deluxe Suite Deck 6

Prestige Deck 4

Prestige Deck 5

Prestige Deck 5 Suite

Prestige Deck 6

Prestige Deck 6 Suite

Privilege Suite Deck 5

Privilege Suite Deck 6



The Small Cruise Ship Collection

www.small-cruise-ships.com

small-cruise-ships.com

info@small-cruise-ships.com

PRICING

01-Oct-2026 to 11-Oct-2026

Grand Deluxe Suite Deck 5	£17105 GBP pp
Privilege Suite Deck 5	£14149 GBP pp
Deluxe Stateroom	£6259 GBP pp
Deluxe Suite Deck 3	£11849 GBP pp
Grand Deluxe Suite Deck 6	£17105 GBP pp
Prestige Deck 5 Suite	£13165 GBP pp
Prestige Deck 6	£7309 GBP pp
Prestige Deck 6 Suite	£13495 GBP pp
Prestige Deck 4	£6579 GBP pp
Deluxe Suite Deck 6	£11849 GBP pp
Prestige Deck 5	£6915 GBP pp
Privilege Suite Deck 6	£14149 GBP pp
Deluxe Suite Deck 5	£11849 GBP pp
Deluxe Suite Deck 4	£11849 GBP pp



The Small Cruise Ship Collection

www.small-cruise-ships.com

01432 507 280 (within UK)

info@small-cruise-ships.com | small-cruise-ships.com