



## ANAKONDA AMAZON 8 DAY WEDNESDAY CRUISE

This journey takes us into the endless heart of biodiversity, the Amazon Basin. Our First-Rate River Cruise Vessel makes it possible for you to explore the remote nature of this jungle in total comfort and leisure. The Anakonda Amazon Cruise is our state-of-the-art vessel specifically designed to navigate on the Napo River in the Ecuadorian Amazon. Our wide array of onboard services and amenities will ensure your full comfort and enjoyment as you explore this region of the world. The Anakonda Amazon Cruise, winner of the World Travel Award as South America's Leading Boutique Cruise, offers an exclusive experience characterized by comfort, exceptional culinary offerings and once-in-a-lifetime journeys involving Amazonian cultural immersion, unique and vibrant wildlife, and the unrivaled wonders of its many ecosystems. In this rich and diverse environment, we have the chance to observe enchanting animals such as the pink river dolphin, giant otters, and turtles, as well as hundreds of native birds and primates, while navigating along the region's freshwater rivers, both white-water and black-water. Our guests will enjoy Ecuador's pristine Amazon region in total comfort on board with our first-class facilities: 14 Standard Suites offering spacious accommodations, air conditioning, private bathrooms with hot water, French balconies and ceiling-to-floor windows. Our 4 Deluxe Suites come complete with all of the above, plus private balconies and private whirlpool bathtubs. We invite you aboard to experience our cozy Bar and Lounge, Conference Room and Reading Room featuring breathtaking views; our Al Fresco Shaded Lounge, Panoramic View Restaurant and Outdoors Hot Tub on the vessel's top deck. We also have a Boutique and

concierge for a journey that is both relaxing and exhilarating! We are committed to caring for natural resources and the conservation of local cultures by applying responsible and sustainable tourism practices and community involvement in all of our operations. We have also developed Capi's Amazon River Program (CARP), two non-profit sustainable rescue programs for endangered animals in the Ecuadorian Amazon rainforest: the charapas turtle and the pink river dolphin. Shorter 4- and 5-day cruises are available. Please contact us for more



information.

### ITINERARY

#### DAY 1 WEDNESDAY: QUITO – COCA – NAPO RIVER

Our adventure begins in Quito, the capital of Ecuador. After a 30-minute flight from Quito to the Amazonian city of Coca, we will transfer to the dock and board our motorized canoe for a 90-minute journey down the river, taking in the beauty of the Amazon, until we reach the Anakonda Amazon Cruise and receive our warm welcome aboard. On the Anakonda, we will be joined by expert local naturalist guides, who will provide us with



## The Small Cruise Ship Collection

[www.small-cruise-ships.com](http://www.small-cruise-ships.com)

[small-cruise-ships.com](http://small-cruise-ships.com)

[info@small-cruise-ships.com](mailto:info@small-cruise-ships.com)

a brief, informative introduction to the Ecuadorian Amazon; and afterwards guests will have the opportunity to explore our cruise ship and admire the rainforest landscape as we glide down the Napo River. After a delicious dinner, we will take a nighttime forest walk to hear the sounds of the rainforest and observe the nocturnal wildlife.

### DAY 2 THURSDAY: HOME OF THE LEGENDARY PINK DOLPHIN AND THE SECOYA COMMUNITY

In the morning we will explore the lower part of the Napo River, where we will spot different bird species such as eagles, oropendolas, and the celebrated woodpeckers. In the afternoon we will visit Yasuni National Park, one of the most biodiverse places on the planet and home to the legendary pink dolphin. This is the perfect opportunity to participate in our pink dolphin conservation program, which we are involved in together with the Martinica community in the Cocaya area, providing a safe haven where these dolphins can live and feed without the risk of being hunted. The Secoyas people, a minority ancestral culture, live near Yasuni, and will show us how to prepare traditional cassava bread during our visit.

### DAY 3 FRIDAY: KICHWA FAMILY AND LIFE ONBOARD

We will begin the day by visiting an authentic Kichwa family on the banks of the Napo River, where we will have the opportunity to learn directly from members of the local community about their lifestyle. We will then board the Anakonda and participate in a cooking class with our expert chef, who will show us how to prepare exquisite traditional Ecuadorian fare. Guests are also invited to try their hand at traditional handicrafting or to take in the magnificent Amazon environment from our open-air hot tub, enjoy cocktails at our Bar and Lounge, or delight in some nighttime stargazing from our Observation Deck. Our more active

guests will have the opportunity to explore nature in this area by kayak.

### DAY 4 SATURDAY: FOREST ADVENTURE AND CANOPY OBSERVATION TOWER

We start the day by visiting an observation tower built in a giant millenary kapok tree, where guests can marvel at the impressive 360° view from the top overlooking the treetops of the forest canopy and contemplate the sheer vastness of the Amazon. In the afternoon, we will explore the primary forest and spot the different plant and wildlife species endemic to this ecosystem. We can also find the strange and unique bird known as the hoatzin, or as it's known locally, the "stinkbird".

### DAY 5 SUNDAY: INDILLAMA AND NAPO RIVERS, THE NORTH SIDE OF YASUNI NATIONAL PARK

We will begin the day kayaking on the Indillama River, one of the Napo River tributaries that will take us to Yasuni National Park. Kayaks are comfortable, smooth, and silent, providing an ideal opportunity for spotting wildlife. We can also use canoes to travel in search of even more wildlife. After an adventure-filled day, guests can take advantage of our observation deck and experience a magical view under the stars. Our more energetic guests can choose to unwind with a night walk through the jungle in search of nocturnal creatures.

### DAY 6 MONDAY: PAÑACOCOA, THE MYTHICAL PIRANHA LAGOON

We will travel downstream to the Pañayacu River delta, where we will embark on a canoe trip to Pañacocha Lake ("Piranha Lagoon" in the native Kichwa language), an ecosystem flooded by blackwater river water. The surrounding protected rainforest is home to primates and birds and is the perfect habitat for piranhas, the Paiche or pirarucu (one of the world's largest freshwater fish), the white caiman, and hundreds of other



The Small Cruise Ship Collection

[www.small-cruise-ships.com](http://www.small-cruise-ships.com)

01432 507 280 (within UK)

[info@small-cruise-ships.com](mailto:info@small-cruise-ships.com) | [small-cruise-ships.com](http://small-cruise-ships.com)





aquatic animals. The surrounding protected rainforest is home to primates and various bird species, which we will be able to spot during a walk with our guides. We will then recharge our energy with an Amazon-style barbeque at a community camp, and after a short rest, we will take part in aquatic activities such as kayaking and/or swimming. Back on board the Anakonda, we will build on what we learned with an interesting talk about the region given by our guides.

#### DAY 7 TUESDAY: PARROT CLAY LICKS AND AMAZON COMMUNITIES

We will set out on our motorized canoes early in the morning to witness one of the most incredible sights on this side of the Western Amazon - the famous parrot clay licks. This unique place is rich in minerals and attracts hundreds of colorful parrots, parakeets, and Amazon birds who meet up here to lick the clay which provides a healthy boost to their digestion. In the afternoon we will visit the Kichwa women's community project, where we will learn about the indigenous lifestyle along the Napo river, their ancestral culture, and their community, and will have the opportunity to support them by purchasing handicrafts, local products, and souvenirs, as well as the opportunity to participate in the Charapas Turtle Conservation that we support together with the community.

#### DAY 8 WEDNESDAY: RETURN

This is where our adventure ends! But first, we will enjoy our return to Puerto Providencia where we will disembark the Anakonda Amazon Cruise and ride back to the city of Coca in the motorized canoe.

#### Please Note:

Itineraries are subject to change. Shorter 4- and 5-day cruises are available. Please contact us for more information.



The Small Cruise  
Ship Collection

[www.small-cruise-ships.com](http://www.small-cruise-ships.com)

[small-cruise-ships.com](http://small-cruise-ships.com)

[info@small-cruise-ships.com](mailto:info@small-cruise-ships.com)

## YOUR SHIP: ANAKONDA

|                            |                     |
|----------------------------|---------------------|
| <b>YOUR SHIP:</b>          | <b>Anakonda</b>     |
| <b>VESSEL TYPE:</b>        | <b>River Cruise</b> |
| <b>LENGTH:</b>             | <b>45m</b>          |
| <b>PASSENGER CAPACITY:</b> | <b>36</b>           |
| <b>BUILT/REFURBISHED:</b>  | <b>2013</b>         |

The Anakonda Amazon was built to make the experience of the Amazon the most comprehensive and unique adventure possible! Its eighteen suites feature ample sitting areas, large and comfortable beds. The vessel comes complete with an expansive observation deck, outdoor Jacuzzi and an al fresco lounge, ideal for cocktails, relaxation, reading or simply enjoying the spectacular view. The vessel also features 3 canoes for guest transportation to land excursions and activities and 10 kayaks, as well as hammocks, naturalist tour leaders and a travel concierge, who will go out of his way to personalize your experience, making the Anakonda Amazon River Cruise a savory, unforgettably exciting treat!



The Small Cruise  
Ship Collection

[www.small-cruise-ships.com](http://www.small-cruise-ships.com)

**01432 507 280** (within UK)

[info@small-cruise-ships.com](mailto:info@small-cruise-ships.com) | [small-cruise-ships.com](http://small-cruise-ships.com)





# The Small Cruise Ship Collection

[www.small-cruise-ships.com](http://www.small-cruise-ships.com)

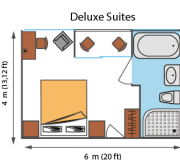
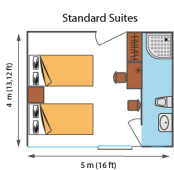
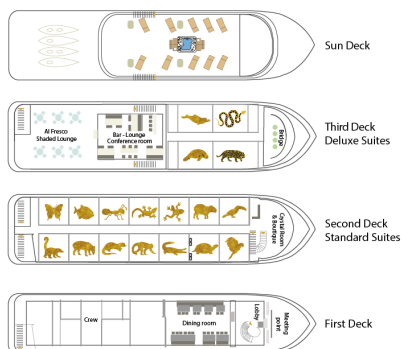
[small-cruise-ships.com](http://small-cruise-ships.com)

[info@small-cruise-ships.com](mailto:info@small-cruise-ships.com)

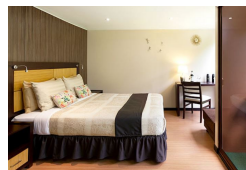
## INSIDE YOUR SHIP



ANAKONDA  
AMAZON CRUISE



Deluxe Suite



Standard Suite



The Small Cruise  
Ship Collection

[www.small-cruise-ships.com](http://www.small-cruise-ships.com)

01432 507 280 (within UK)

[info@small-cruise-ships.com](mailto:info@small-cruise-ships.com) | [small-cruise-ships.com](http://small-cruise-ships.com)



# The Small Cruise Ship Collection

[www.small-cruise-ships.com](http://www.small-cruise-ships.com)

[small-cruise-ships.com](http://small-cruise-ships.com)

[info@small-cruise-ships.com](mailto:info@small-cruise-ships.com)

## PRICING

### 25-Feb-2026 to 04-Mar-2026

|                |              |
|----------------|--------------|
| Standard Suite | £4612 GBP pp |
| Deluxe Suite   | £5763 GBP pp |

### 04-Mar-2026 to 11-Mar-2026

|                |              |
|----------------|--------------|
| Standard Suite | £4612 GBP pp |
| Deluxe Suite   | £5763 GBP pp |

### 11-Mar-2026 to 18-Mar-2026

|                |              |
|----------------|--------------|
| Standard Suite | £4612 GBP pp |
| Deluxe Suite   | £5763 GBP pp |

### 18-Mar-2026 to 25-Mar-2026

|                |              |
|----------------|--------------|
| Standard Suite | £4612 GBP pp |
| Deluxe Suite   | £5763 GBP pp |

### 25-Mar-2026 to 01-Apr-2026

|                |              |
|----------------|--------------|
| Deluxe Suite   | £5763 GBP pp |
| Standard Suite | £4612 GBP pp |

### 01-Apr-2026 to 08-Apr-2026

|                |              |
|----------------|--------------|
| Standard Suite | £4612 GBP pp |
| Deluxe Suite   | £5763 GBP pp |

### 08-Apr-2026 to 15-Apr-2026

|                |              |
|----------------|--------------|
| Standard Suite | £4612 GBP pp |
| Deluxe Suite   | £5763 GBP pp |

### 15-Apr-2026 to 22-Apr-2026

|                |              |
|----------------|--------------|
| Standard Suite | £4612 GBP pp |
| Deluxe Suite   | £5763 GBP pp |

### 22-Apr-2026 to 29-Apr-2026

|                |              |
|----------------|--------------|
| Deluxe Suite   | £5763 GBP pp |
| Standard Suite | £4612 GBP pp |

### 29-Apr-2026 to 06-May-2026

|                |              |
|----------------|--------------|
| Standard Suite | £4612 GBP pp |
| Deluxe Suite   | £5763 GBP pp |

### 06-May-2026 to 13-May-2026

|                |              |
|----------------|--------------|
| Standard Suite | £4612 GBP pp |
| Deluxe Suite   | £5763 GBP pp |

### 13-May-2026 to 20-May-2026

|                |              |
|----------------|--------------|
| Standard Suite | £4612 GBP pp |
| Deluxe Suite   | £5763 GBP pp |

### 20-May-2026 to 27-May-2026

|                |              |
|----------------|--------------|
| Standard Suite | £4612 GBP pp |
| Deluxe Suite   | £5763 GBP pp |

### 27-May-2026 to 03-Jun-2026

|                |              |
|----------------|--------------|
| Standard Suite | £4612 GBP pp |
| Deluxe Suite   | £5763 GBP pp |

### 03-Jun-2026 to 10-Jun-2026

|                |              |
|----------------|--------------|
| Standard Suite | £4612 GBP pp |
| Deluxe Suite   | £5763 GBP pp |



The Small Cruise Ship Collection

[www.small-cruise-ships.com](http://www.small-cruise-ships.com)

01432 507 280 (within UK)

[info@small-cruise-ships.com](mailto:info@small-cruise-ships.com) | [small-cruise-ships.com](http://small-cruise-ships.com)



## The Small Cruise Ship Collection

[www.small-cruise-ships.com](http://www.small-cruise-ships.com)



[small-cruise-ships.com](http://small-cruise-ships.com)

[info@small-cruise-ships.com](mailto:info@small-cruise-ships.com)

### 10-Jun-2026 to 17-Jun-2026

|                |              |
|----------------|--------------|
| Deluxe Suite   | £5763 GBP pp |
| Standard Suite | £4612 GBP pp |

### 17-Jun-2026 to 24-Jun-2026

|                |              |
|----------------|--------------|
| Deluxe Suite   | £5763 GBP pp |
| Standard Suite | £4612 GBP pp |

### 24-Jun-2026 to 01-Jul-2026

|                |              |
|----------------|--------------|
| Deluxe Suite   | £5763 GBP pp |
| Standard Suite | £4612 GBP pp |



The Small Cruise Ship Collection

[www.small-cruise-ships.com](http://www.small-cruise-ships.com)

**01432 507 280** (within UK)

[info@small-cruise-ships.com](mailto:info@small-cruise-ships.com) | [small-cruise-ships.com](http://small-cruise-ships.com)





# The Small Cruise Ship Collection

[www.small-cruise-ships.com](http://www.small-cruise-ships.com)

[small-cruise-ships.com](http://small-cruise-ships.com)

[info@small-cruise-ships.com](mailto:info@small-cruise-ships.com)

## PRICING

### 01-Jul-2026 to 08-Jul-2026

|                |              |
|----------------|--------------|
| Deluxe Suite   | £5763 GBP pp |
| Standard Suite | £4612 GBP pp |

### 08-Jul-2026 to 15-Jul-2026

|                |              |
|----------------|--------------|
| Deluxe Suite   | £5763 GBP pp |
| Standard Suite | £4612 GBP pp |

### 15-Jul-2026 to 22-Jul-2026

|                |              |
|----------------|--------------|
| Standard Suite | £4612 GBP pp |
| Deluxe Suite   | £5763 GBP pp |

### 22-Jul-2026 to 29-Jul-2026

|                |              |
|----------------|--------------|
| Deluxe Suite   | £5763 GBP pp |
| Standard Suite | £4612 GBP pp |

### 29-Jul-2026 to 05-Aug-2026

|                |              |
|----------------|--------------|
| Deluxe Suite   | £5763 GBP pp |
| Standard Suite | £4612 GBP pp |

### 05-Aug-2026 to 12-Aug-2026

|                |              |
|----------------|--------------|
| Standard Suite | £4612 GBP pp |
| Deluxe Suite   | £5763 GBP pp |

### 12-Aug-2026 to 19-Aug-2026

|                |              |
|----------------|--------------|
| Deluxe Suite   | £5763 GBP pp |
| Standard Suite | £4612 GBP pp |

### 19-Aug-2026 to 26-Aug-2026

|                |              |
|----------------|--------------|
| Deluxe Suite   | £5763 GBP pp |
| Standard Suite | £4612 GBP pp |

### 26-Aug-2026 to 02-Sep-2026

|                |              |
|----------------|--------------|
| Standard Suite | £4612 GBP pp |
| Deluxe Suite   | £5763 GBP pp |

### 02-Sep-2026 to 09-Sep-2026

|                |              |
|----------------|--------------|
| Standard Suite | £4612 GBP pp |
| Deluxe Suite   | £5763 GBP pp |

### 09-Sep-2026 to 16-Sep-2026

|                |              |
|----------------|--------------|
| Deluxe Suite   | £5763 GBP pp |
| Standard Suite | £4612 GBP pp |

### 16-Sep-2026 to 23-Sep-2026

|                |              |
|----------------|--------------|
| Standard Suite | £4612 GBP pp |
| Deluxe Suite   | £5763 GBP pp |

### 23-Sep-2026 to 30-Sep-2026

|                |              |
|----------------|--------------|
| Deluxe Suite   | £5763 GBP pp |
| Standard Suite | £4612 GBP pp |

### 30-Sep-2026 to 07-Oct-2026

|                |              |
|----------------|--------------|
| Deluxe Suite   | £5763 GBP pp |
| Standard Suite | £4612 GBP pp |

### 07-Oct-2026 to 14-Oct-2026

|                |              |
|----------------|--------------|
| Standard Suite | £4612 GBP pp |
| Deluxe Suite   | £5763 GBP pp |



The Small Cruise Ship Collection

[www.small-cruise-ships.com](http://www.small-cruise-ships.com)

01432 507 280 (within UK)

[info@small-cruise-ships.com](mailto:info@small-cruise-ships.com) | [small-cruise-ships.com](http://small-cruise-ships.com)





## The Small Cruise Ship Collection

[www.small-cruise-ships.com](http://www.small-cruise-ships.com)



[small-cruise-ships.com](http://small-cruise-ships.com)

[info@small-cruise-ships.com](mailto:info@small-cruise-ships.com)

### 14-Oct-2026 to 21-Oct-2026

|                |              |
|----------------|--------------|
| Deluxe Suite   | £5763 GBP pp |
| Standard Suite | £4612 GBP pp |

### 21-Oct-2026 to 28-Oct-2026

|                |              |
|----------------|--------------|
| Standard Suite | £4612 GBP pp |
| Deluxe Suite   | £5763 GBP pp |

### 28-Oct-2026 to 04-Nov-2026

|                |              |
|----------------|--------------|
| Standard Suite | £4612 GBP pp |
| Deluxe Suite   | £5763 GBP pp |



The Small Cruise Ship Collection

[www.small-cruise-ships.com](http://www.small-cruise-ships.com)

**01432 507 280** (within UK)

[info@small-cruise-ships.com](mailto:info@small-cruise-ships.com) | [small-cruise-ships.com](http://small-cruise-ships.com)



# The Small Cruise Ship Collection

[www.small-cruise-ships.com](http://www.small-cruise-ships.com)

[small-cruise-ships.com](http://small-cruise-ships.com)

[info@small-cruise-ships.com](mailto:info@small-cruise-ships.com)

## PRICING

### 04-Nov-2026 to 11-Nov-2026

|                |              |
|----------------|--------------|
| Standard Suite | £4612 GBP pp |
| Deluxe Suite   | £5763 GBP pp |

### 11-Nov-2026 to 18-Nov-2026

|                |              |
|----------------|--------------|
| Standard Suite | £4612 GBP pp |
| Deluxe Suite   | £5763 GBP pp |

### 18-Nov-2026 to 25-Nov-2026

|                |              |
|----------------|--------------|
| Standard Suite | £4612 GBP pp |
| Deluxe Suite   | £5763 GBP pp |

### 25-Nov-2026 to 02-Dec-2026

|                |              |
|----------------|--------------|
| Deluxe Suite   | £5763 GBP pp |
| Standard Suite | £4612 GBP pp |

### 02-Dec-2026 to 09-Dec-2026

|                |              |
|----------------|--------------|
| Deluxe Suite   | £5763 GBP pp |
| Standard Suite | £4612 GBP pp |

### 09-Dec-2026 to 16-Dec-2026

|                |              |
|----------------|--------------|
| Standard Suite | £4612 GBP pp |
| Deluxe Suite   | £5763 GBP pp |

### 16-Dec-2026 to 23-Dec-2026

|                |              |
|----------------|--------------|
| Deluxe Suite   | £5763 GBP pp |
| Standard Suite | £4612 GBP pp |

### 23-Dec-2026 to 30-Dec-2026

|                |              |
|----------------|--------------|
| Standard Suite | £4612 GBP pp |
| Deluxe Suite   | £5763 GBP pp |

### 30-Dec-2026 to 06-Jan-2027

|                |              |
|----------------|--------------|
| Standard Suite | £4612 GBP pp |
| Deluxe Suite   | £5763 GBP pp |



The Small Cruise Ship Collection

[www.small-cruise-ships.com](http://www.small-cruise-ships.com)

01432 507 280 (within UK)

[info@small-cruise-ships.com](mailto:info@small-cruise-ships.com) | [small-cruise-ships.com](http://small-cruise-ships.com)