

The Small Cruise Ship Collection

www.small-cruise-ships.com

small-cruise-ships.com

info@small-cruise-ships.com

ALASKA'S NATIONAL PARKS BY LAND AND SEA: DENALI TO GLACIER BAY TOUR

From the vast wilderness of the interior region to tidewater glaciers, this 15-night itinerary reveals Alaska in a way few travelers ever experience. Embark on a seven-night adventure through Alaska's interior, taking in the breathtaking landscapes of Denali National Park. Enjoy an included night in Juneau, then spend eight days aboard a small ship exploring Alaska's Inside Passage, with guided kayaking, skiff tours, whale watching, and TWO full days in Glacier Bay National Park.



ITINERARY

Day 1 Fairbanks

Welcome to Fairbanks, Alaska, the largest Interior city. Upon arrival, you will be met by an UnCruise Adventures representative and transferred to your hotel. Please arrive no later than 5:00 pm to attend the welcome reception, where you'll toast with a welcome beverage and get to know your fellow adventurers over cheese and crackers.

Overnight: Pike's Waterfront Lodge or similar

Meals: Light bite

Day 2 Fairbanks (continued)

After breakfast, visit some locals: reindeer! You'll connect with

The Small Cruise Ship Collection

www.small-cruise-ships.com

01432 507 280 (within UK)

info@small-cruise-ships.com | small-cruise-ships.com



The Small Cruise Ship Collection

www.small-cruise-ships.com

small-cruise-ships.com

info@small-cruise-ships.com

them through walks and learn about their importance in this amazing space. Continue with a visit to a local gold mining family to test your luck as you pan for gold and hear about Fairbanks' mining heritage. In the afternoon, explore the Morris Thompson Cultural & Visitor Center and hear from a local Alaskan about life in the Interior.

Overnight: Pike's Waterfront Lodge or similar

Meals: Breakfast, lunch, dinner

Day 3 Fairbanks to Denali

Enjoy breakfast at the hotel before boarding your coach south to Denali National Park. Stop at the Denali Discovery Center in Healy for a box lunch and a short hike with a local naturalist guide. Continue to the Denali National Park Visitor Center to explore exhibits, talk with a ranger, or walk along the nearby trails.

Overnight: Denali Bluffs Hotel or similar

Meals: Breakfast, lunch, dinner

Day 4 Denali

Breakfast before traveling into Denali National Park on a Tundra Wilderness Tour (5-5.5 hours). Your driver/guide shares stories about the park while you look for wildlife including bears, moose, and caribou. In the afternoon, take a guided hike with a local naturalist guide, approximately three hours on the trail.

Overnight: Denali Bluffs Hotel or similar

Meals: Breakfast, snack, lunch, dinner

Day 5 Denali to Talkeetna

Morning at leisure before transferring to the Denali Rail Depot for your scenic train ride south aboard deluxe dome rail. Enjoy lunch on the train while watching the landscapes roll by. Arrive in Talkeetna, the quirky town used as the base camp for Denali climbers. Dinner is on your own in the lodge or in town.

Overnight: Talkeetna Alaskan Lodge or similar

Meals: Breakfast and lunch

Day 6 Talkeetna

Take in the view as you finish breakfast at the lodge. Today, hike the Curry Ridge Trail for views of the surrounding landscape, flora, and fauna. Later, kayak on Byers Lake in the heart of Denali State Park. Enjoy an included dinner. Note: The curry ridge hike is 5-6 miles and about 4-4.5 hours. Appropriate footwear, layers, water, and snacks required.

Overnight: Talkeetna Alaskan Lodge or similar

Meals: Breakfast, box lunch, dinner

Day 7 Talkeetna to Anchorage

Enjoy breakfast before setting out on a guided hike in the Talkeetna Lakes area. Look for loons, kingfishers, moose, and

The Small Cruise Ship Collection

www.small-cruise-ships.com

01432 507 280 (within UK)

info@small-cruise-ships.com | small-cruise-ships.com



The Small Cruise Ship Collection

www.small-cruise-ships.com

small-cruise-ships.com

info@small-cruise-ships.com

bears. Lunch is included in Talkeetna before traveling south to Anchorage by motorcoach.

It's important to note that the Talkeetna Lakes hike has about a 200-foot elevation gain with some uneven terrain. Make sure you prepare with appropriate footwear, layers, water, and snacks.

Overnight: The Voyager Inn or similar

Meals: Breakfast, lunch, dinner

Day 8 Anchorage to Juneau

After breakfast, transfer to the Anchorage Airport for your flight to Juneau (not included). While in Juneau, we recommend checking out Mt. Roberts Tramway (visit our office for a free pass!), the Alaska State Museum, and the Sealaska Heritage Institute. Wrap up your day with a classic Alaskan dinner at Tracy's Crab Shack (not included), where you can enjoy king, snow, and Dungeness crab right off the boat.

Overnight: Ramada by Wyndham Juneau (included)

Meals included: Breakfast

Day 9 Juneau Cruise Embarkation

Spend the day exploring more of this quaint seaside town. Upon boarding the ship in the afternoon, your crew will greet you with champagne and smiles. Set sail for a week of scenic channels and remote wilderness.

Meals included: Dinner

Day 10 Icy Strait or Neka Bay

Kick start the morning with on-deck yoga stretches and a strong cup of coffee. Energized and snug in your kayak, glide around in remote bays off Icy Strait through giant bullwhip kelp that can grow to over 100 feet long. Join your fellow adventurers in a skiff to a rocky outcropping to watch sea lions play. Or, step into mud boots for a forest hike with your top-notch, naturalist guides who have plenty to share about everything Alaska; marine biology, plants, and even geology. On board, soak it all in as you soak in the hot tub.

Meals included: Breakfast, lunch, dinner

Day 11 & 12 Glacier Bay National Park

This national park covers 3.3 million acres (that's a tad smaller than the state of Connecticut). Let that sink in. Most visitors see the same sliver of the park as everyone else. Not you. Over the course of two days, you will explore the remote wilderness of Glacier Bay National Park and the surrounding areas. We will visit one of the park's iconic glaciers: Margerie or John Hopkins. Glacier Bay is a wildlife-heavy area: keep your eyes peeled for stellar sea lions, sea otters, and whales. We will also pass South Marble Island and Gloomy Knob, popular areas for spotting puffins and other sea birds. Small group excursions within the park may include skiff tours, kayaking, or hard-charger ridge hikes with epic views. The exact order of these excursions will vary, but you're guaranteed to explore parts of Glacier Bay National Park that 99% of visitors never see.

The Small Cruise Ship Collection

www.small-cruise-ships.com

01432 507 280 (within UK)

info@small-cruise-ships.com | small-cruise-ships.com



The Small Cruise Ship Collection

www.small-cruise-ships.com

small-cruise-ships.com

info@small-cruise-ships.com

Meals included: Breakfast, lunch, dinner

Day 13 Chichagof Island

Enjoy the top deck for a sunrise or morning stretch. Meander through glacier-carved fjords along the Chichagof coast. Then, anchor. It's a prime time to lower the kayaks and skiffs. Camera in hand, set off on land and sea explorations. Closer inspection by skiff, moss-dripping trees run right down to the water. Any bears in there? With one of the world's largest populations of bears, it's possible. Go searching for giant trees and tidal pools. Hiking in the Tongass, it won't take long to find them. Your eagle-eyes guides lead the pack--and pull up the rear.

Meals included: Breakfast, lunch, dinner

Day 14 Frederick Sound

Hang out and enjoy the show. You may find yourself in 'whale soup' surrounded by feeding humpbacks swimming these abundant glacial waters. Based on wind and weather, your expedition team has the lineup of adventures all mapped out. Cruise past Five Fingers Lighthouse, Alaska's oldest light station and The Brothers Islands, where sea lions nap on rocky nobs. Paddle into the depths of Port Houghton or Windham Bay or head ashore for a hike. Tonight, toast another big day in Alaska.

Meals included: Breakfast, lunch, dinner

Day 15 Tracy Arm & Sawyer Glaciers

Take an early peek out of your window. Fjord cliffs reach skyward. Floating ice. And deep, u-shaped valleys. There's no abracadabra here. Mother Nature's magic is real. Cruise past harbor seals and their pups lounging on chunks of ice. Tides permitting; your skiff driver knows the ropes and guides you along. It's a mashup of towering walls, temperamental currents, and the coastal mountains. So many waterfalls. Mountain goats show off fancy footwork on the cliffs, so keep your eyes peeled. Finish your week with a Captain's Dinner, then sip on a cocktail while watching the week's "photo journal" by your crew.

Meals included: Breakfast, lunch, dinner

Day 16 Juneau, Alaska Disembarkation

Linger over breakfast this morning cruising into Juneau. Wish your crew and friends goodbye. Then, it's off to the airport for your flight home.

Meals included: breakfast

Please note:

Itineraries are subject to change.

The Small Cruise Ship Collection

www.small-cruise-ships.com

01432 507 280 (within UK)

info@small-cruise-ships.com | small-cruise-ships.com



The Small Cruise
Ship Collection

www.small-cruise-ships.com

small-cruise-ships.com

info@small-cruise-ships.com

YOUR SHIP: WILDERNESS DISCOVERER

YOUR SHIP:

Wilderness Discoverer

VESSEL TYPE:

LENGTH:

PASSENGER CAPACITY:

BUILT/REFURBISHED:

The 76-guest Wilderness Discoverer gets rave reviews from her guests. Expedition is top-of-mind with this vessel; and adventure and discovery lay at its heart. The interior complements the outside and public and private spaces are loaded with amenities. Enjoy a main lounge that evokes the feel of a National Park Lodge or neighborhood pub and relax on deck or keep watch for wildlife. Three accessible decks are fully equipped for comfort and action. The sun deck has a sauna and fitness equipment; viewing is over-the-top from the bow and under-the-stars from two hot tubs on the observation deck; and the EZ Dock launch platform on the main deck makes getting in the water a cinch. Onboard are kayaks; stand-up paddle boards; inflatable skiffs; hiking poles; yoga mats; hydrophone for listening below-surface; and a bow-mounted underwater camera pipes the action to the lounge and to your cabin TV. The four cabin categories aboard the Wilderness Discoverer are: Navigator; Trailblazer; Pathfinder; and Explorer. Depending on your cabin, singles, doubles or triples can be accommodated. Common to all Wilderness Discoverer cabins are: Memory foam mattresses; Flat-screen TV/DVD; and iPod docking station. All staterooms come with a view window (no portholes).



The Small Cruise
Ship Collection

www.small-cruise-ships.com

01432 507 280 (within UK)

info@small-cruise-ships.com | small-cruise-ships.com

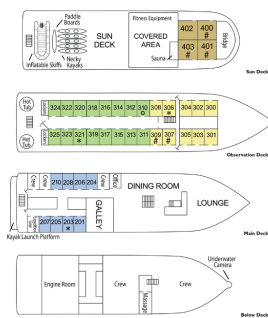
The Small Cruise Ship Collection

www.small-cruise-ships.com

small-cruise-ships.com

info@small-cruise-ships.com

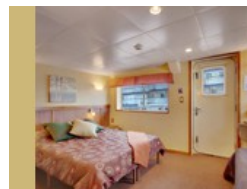
INSIDE YOUR SHIP



All Cabins are Above Deck with View Windows
 * Double or Triple Accommodation * Single or Double Accommodation * Fixed Bath

- Explorer Cabin (EXPL)**
10-403
Single stateroom or twin beds, large picture window/private bath with shower.
- Pathfinder Cabin (PATH)**
10-305
Double stateroom, double bed or double bed with bunk beds, view window/private bath with shower.
- Trailblazer Cabin (TRBL)**
10-303
Queen or twin beds, view window/private bath with shower.
- Navigator Cabin (NAV)**
10-301/302/304
Queen or twin beds, view window/private bath with shower.

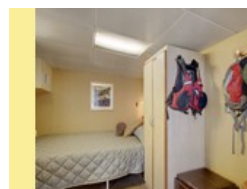
Admiral Cabin



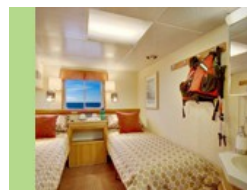
Navigator Cabin



Pathfinder Cabin



Trailblazer Cabin





The Small Cruise Ship Collection

www.small-cruise-ships.com

small-cruise-ships.com

info@small-cruise-ships.com

PRICING

30-May-2026 to 14-Jun-2026

Admiral Cabin	£13095 GBP pp
Pathfinder Cabin	£11785 GBP pp
Trailblazer Cabin	£11245 GBP pp
Navigator Cabin	£10549 GBP pp

13-Jun-2026 to 28-Jun-2026

Admiral Cabin	£13095 GBP pp
Pathfinder Cabin	£11785 GBP pp
Trailblazer Cabin	£11245 GBP pp
Navigator Cabin	£10549 GBP pp

04-Jul-2026 to 19-Jul-2026

Admiral Cabin	£13095 GBP pp
Pathfinder Cabin	£11785 GBP pp
Trailblazer Cabin	£11245 GBP pp
Navigator Cabin	£10549 GBP pp

11-Jul-2026 to 26-Jul-2026

Admiral Cabin	£13095 GBP pp
Pathfinder Cabin	£11785 GBP pp
Trailblazer Cabin	£11245 GBP pp
Navigator Cabin	£10549 GBP pp

18-Jul-2026 to 02-Aug-2026

Admiral Cabin	£13095 GBP pp
Pathfinder Cabin	£11785 GBP pp
Trailblazer Cabin	£11245 GBP pp
Navigator Cabin	£10549 GBP pp

08-Aug-2026 to 23-Aug-2026

Admiral Cabin	£13095 GBP pp
Pathfinder Cabin	£11785 GBP pp
Trailblazer Cabin	£11245 GBP pp
Navigator Cabin	£10549 GBP pp

15-Aug-2026 to 30-Aug-2026

Admiral Cabin	£13095 GBP pp
Pathfinder Cabin	£11785 GBP pp
Trailblazer Cabin	£11245 GBP pp
Navigator Cabin	£10549 GBP pp

29-Aug-2026 to 13-Sep-2026

Admiral Cabin	£11319 GBP pp
Trailblazer Cabin	£9859 GBP pp
Navigator Cabin	£9395 GBP pp
Pathfinder Cabin	£10245 GBP pp

05-Sep-2026 to 20-Sep-2026

Admiral Cabin	£10245 GBP pp
Pathfinder Cabin	£9475 GBP pp
Trailblazer Cabin	£9089 GBP pp
Navigator Cabin	£8705 GBP pp



The Small Cruise Ship Collection

www.small-cruise-ships.com



small-cruise-ships.com

info@small-cruise-ships.com

PRICING

29-May-2027 to 13-Jun-2027

Admiral Cabin	£12629 GBP pp
Pathfinder Cabin	£11245 GBP pp
Trailblazer Cabin	£10785 GBP pp
Navigator Cabin	£10245 GBP pp

05-Jun-2027 to 20-Jun-2027

Admiral Cabin	£13785 GBP pp
Trailblazer Cabin	£11629 GBP pp
Navigator Cabin	£11015 GBP pp
Pathfinder Cabin	£12169 GBP pp

03-Jul-2027 to 18-Jul-2027

Admiral Cabin	£13785 GBP pp
Pathfinder Cabin	£12169 GBP pp
Navigator Cabin	£11015 GBP pp
Trailblazer Cabin	£11629 GBP pp

10-Jul-2027 to 25-Jul-2027

Admiral Cabin	£13785 GBP pp
Pathfinder Cabin	£12169 GBP pp
Trailblazer Cabin	£11629 GBP pp
Navigator Cabin	£11015 GBP pp

12-Jul-2027 to 27-Jul-2027

Admiral Cabin	£13785 GBP pp
Pathfinder Cabin	£12169 GBP pp
Trailblazer Cabin	£11629 GBP pp
Navigator Cabin	£11015 GBP pp

17-Jul-2027 to 01-Aug-2027

Admiral Cabin	£13785 GBP pp
Pathfinder Cabin	£12169 GBP pp
Trailblazer Cabin	£11629 GBP pp
Navigator Cabin	£11015 GBP pp

07-Aug-2027 to 22-Aug-2027

Pathfinder Cabin	£12169 GBP pp
Trailblazer Cabin	£11629 GBP pp
Navigator Cabin	£11015 GBP pp
Admiral Cabin	£13785 GBP pp

14-Aug-2027 to 29-Aug-2027

Admiral Cabin	£13785 GBP pp
Pathfinder Cabin	£12169 GBP pp
Trailblazer Cabin	£11629 GBP pp
Navigator Cabin	£11015 GBP pp

21-Aug-2027 to 05-Sep-2027

Admiral Cabin	£12169 GBP pp
Pathfinder Cabin	£10859 GBP pp
Trailblazer Cabin	£10395 GBP pp
Navigator Cabin	£9935 GBP pp



01432 507 280 (within UK)

info@small-cruise-ships.com | small-cruise-ships.com



The Small Cruise Ship Collection

www.small-cruise-ships.com



small-cruise-ships.com

info@small-cruise-ships.com

PRICING

28-Aug-2027 to 12-Sep-2027

Admiral Cabin	£11089 GBP pp
Trailblazer Cabin	£9625 GBP pp
Navigator Cabin	£9245 GBP pp
Pathfinder Cabin	£10015 GBP pp



The Small Cruise Ship Collection

www.small-cruise-ships.com

01432 507 280 (within UK)

info@small-cruise-ships.com | small-cruise-ships.com