

The Small Cruise Ship Collection

www.small-cruise-ships.com

small-cruise-ships.com

info@small-cruise-ships.com

ALASKA'S INSIDE PASSAGE: FJORDS OF THE GREAT LAND EXPEDITION 2027

Alaska 's wild fjords Join us on an adventure from Vancouver to Whittier as we venture deep into Prince William Sound, showing you majestic scenery, traditional Alaskan culture and temperate rainforest wildlife. We'll sail the Inside Passage and the Alaskan Panhandle, noted for their deep fjords, icy glaciers and towering mountains. As we sail, we'll be on the lookout for whales and orcas, as well as shore animals including bears and moose. Rich cultures unveiled The southeast region of Alaska is known for its enchanting vistas and its mix of cultures. We'll be stopping off at communities where Lingit, Haida, and Chugach people live, as well as places where other cultures - among them Russian, Norwegian and Spanish - have left their indelible mark. With several days set aside for pure exploration, you'll have the opportunity to walk, sail and kayak in some of the most soul-stirringly beautiful places that wild Alaska can offer.



ITINERARY

Day 1 Your expedition begins

Set sail from Vancouver

Your adventure starts in Vancouver. A bustling and beautiful seaport city set against steep mountains.

Vancouver's various neighbourhoods buzz with world-class farm-to-table cuisine. Wander Gastown, Vancouver's Victorian quarter or walk around beautiful Stanley Park, which offers a view of the city and a glimpse of the stunning nature you'll see on the voyage. Why not arrive early and take advantage of

The Small Cruise Ship Collection

www.small-cruise-ships.com

01432 507 280 (within UK)

info@small-cruise-ships.com | small-cruise-ships.com



The Small Cruise Ship Collection

www.small-cruise-ships.com

small-cruise-ships.com

info@small-cruise-ships.com

everything Vancouver has to offer.

Your expedition ship MS Roald Amundsen awaits you at the pier. Settle in and take your time to get to know the ship before listening to the safety briefing.

Day 2 Cruising Queen Charlotte Sound

Look out for marine wildlife as we cruise the Inside Passage

The Inside Passage coastal route takes us through the great North American Pacific Fjordland, a protected stretch of water over 930 miles long.

We'll be sailing outside of the protected fjords into open waters, up Queen Charlotte Sound and Hecate Strait. This is a day at sea, and our passage is somewhat protected from the open ocean by the island of Haida Gwaii. As we sail, look out for wildlife including humpback whales, orcas, fin whales, minke whales and Pacific white-sided dolphins.

Day 3 Unspoiled Misty Fjords

Revel in a wilderness where wildlife thrives

Part of the Tongass National Forest, Misty Fjords is a pristine wilderness of evergreen trees, roaring waterfalls and snowcapped peaks. The revered naturalist John Muir described the area as one of the most beautiful places he'd ever seen.

Weather permitting, you'll join the Expedition Team to tour Misty

Fjords in our small expedition boats, or explore in a kayak.

Misty Fjords is rich in wildlife. As we explore, scan the shores and forests for black and brown bears, as well as moose. These waters are home to Pacific salmon, otters, Steller sea lions, harbour seals, orcas and Dall's porpoises. Skywards, you might spot herons and Bald Eagles.

Day 4 The totems of Klawock

Discover Klawock's Native heritage

Today we visit Klawock, beautifully situated on the western shore of Prince of Wales Island. The small town has a population of around 700 and is known for its array of totem poles.

A centre for  ngit culture, the original name of the island was 'Taan' meaning sea lion. At the Totem Park you'll see 21 exquisitely carved examples, some of them replicas of the originals that stood in the winter village of Tuxecan.

Day 5 Fjords of Southeast Alaska

Explore the scenic bays of Chatham Strait

Start your day looking out for whales in the pristine waters of Frederick Sound. Today is an exploration day, so the Captain and Expedition Team will use their expertise to choose the best destination.

The Small Cruise Ship Collection

www.small-cruise-ships.com

01432 507 280 (within UK)

info@small-cruise-ships.com | small-cruise-ships.com



The Small Cruise Ship Collection

www.small-cruise-ships.com

small-cruise-ships.com

info@small-cruise-ships.com

We might take to the water in our expedition boats and investigate the secluded coves and forested shorelines of the 150-mile-long Chatham Strait, or perhaps opportunities for kayaking will present themselves if the conditions are right. Wherever we explore, keep a lookout for wildlife as Bald Eagles, bears and humpback whales can be spotted in this region.

Day 6 Icy Strait expedition day

Embrace the thrill of wild Alaska

Today is another day of exploration as we sail into Icy Strait and take a closer look at some of the islands and islets. As ever - we will gauge the weather conditions and wildlife spotting opportunities to decide upon the best location.

Using our expedition boats, we may get close to some of the rocky shores here, with the possibility of a landing and nature walk. The coast in this region grows more rugged the closer we get to the open sea, with rocky pinnacles and sea caves galore. Keep an eye out for whales, as well as sea lions, orcas and Bald Eagles.

Day 7 Glaciers of Icy Bay

Spot wildlife in these glacier-fed waters

Today is an exploration day in Icy Bay. Three glaciers - Guyot, Yahtse, and Tyndall - each feed ice into the bay's waters to give it its name. If conditions allow, you'll explore in our small

expedition boats or by kayak, immersing you in the remarkable beauty of this icy landscape.

From Icy Bay, you can admire striking, jagged Mt. St Elias. Known for its steep vertical relief, it is the second tallest peak in the US and third tallest in the US and Canada at over 18,000 ft.

In the Gulf of Alaska, we'll scout for humpback whales, orcas, sea otters, and harbour seals which are often seen in these waters.

Day 8 Historic Valdez

Learn about the rich history of Valdez

Today you'll see a region that was in the news for all the wrong reasons when the Exxon Valdez oil spill occurred in 1989, but which today has made a remarkable recovery. After significant clean-up efforts, the coastline has largely recovered -- a testament to what can be done to heal damaged ecosystems.

On a visit to the Valdez Museum, you'll see exhibits of Native Alaskan art and culture as well as artifacts from the Gold Rush era, and learn about the history of Alaska's Bush Pilots. As we travel around this region, look out for wildlife such as beavers, moose and bears.

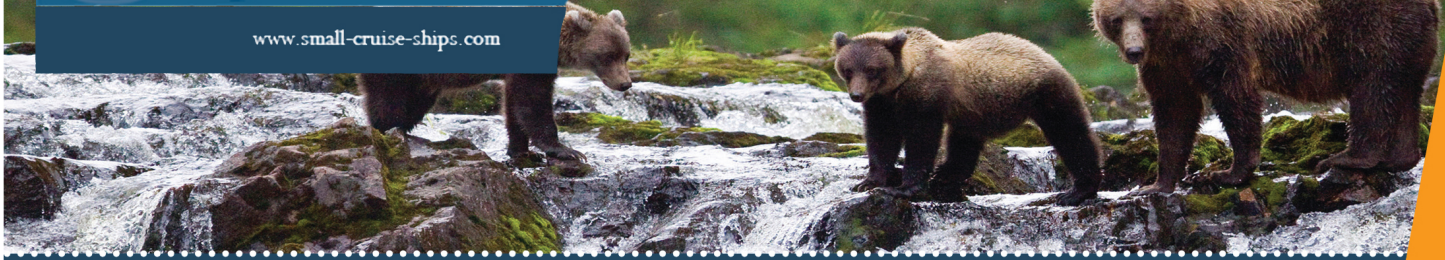
Day 9 Tidewater Glaciers of Prince William Sound

Get ready to experience nature's raw power



The Small Cruise
Ship Collection

www.small-cruise-ships.com



small-cruise-ships.com

info@small-cruise-ships.com

Itineraries are subject to change.

Today is a day all about glaciers. Prince William Sound is home to 150 of these amazing rivers of ice, including 17 incredible tidewater glaciers. Your Captain will choose the best location for the day based on the conditions.

We'll get as close to the glaciers as we safely can, taking our small expedition boats into the fjord or even exploring by kayak if conditions permit. From the water, you might catch sight of humpback whales, Bald Eagles, otters and harbor seals, all of which inhabit this icy wilderness.

Day 10 Whittier's Stunning Beauty

Disembark in Whittier

Your expedition cruise ends in Whittier, a small, picturesque fishing town of just a few hundred residents, nestled between towering mountains and the deep blue waters of Prince William Sound.

Surrounded by dramatic glaciers, cascading waterfalls, and lush temperate rainforests, it serves as a gateway to the sound - a haven for kayakers, photographers, and adventurers drawn to its pristine fjords and abundant wildlife.

From here you will be transferred to the airport in Anchorage.

To get the most out of your time here, we recommend joining our -post-voyage option.

Please note:



The Small Cruise
Ship Collection

www.small-cruise-ships.com

01432 507 280 (within UK)

info@small-cruise-ships.com | small-cruise-ships.com

The Small Cruise Ship Collection

www.small-cruise-ships.com

small-cruise-ships.com

info@small-cruise-ships.com

YOUR SHIP: ROALD AMUNDSEN

YOUR SHIP: **Roald Amundsen**

VESSEL TYPE:

LENGTH:

PASSENGER CAPACITY:

BUILT/REFURBISHED:

Launched in 2019, The state of the art vessel features new and environmentally sustainable hybrid technology that will reduce fuel consumption and show the world that hybrid propulsion on large ships is possible. MS Roald Amundsen is the first of two hybrid ships to be launched cutting emissions by sailing with electrical propulsion. Hybrid technology, combined with the advanced construction of the hull and effective use of electricity on board will reduce fuel consumption and CO2-emissions on the ships by 20 percent. The future of shipping will be silent and emission free. MS Roald Amundsen will lead the way towards an even more sustainable way of traveling. Sailing on electrical power is not only a great benefit for the environment, but it will also enhance the impact of experiencing nature for the guests. The ship will be specially constructed for voyages in polar waters and serve as a comfortable basecamp at sea - bringing adventurers from all over the world to the most spectacular destinations in the most sustainable way. These ships combine state-of-the-art technology together with a premium onboard experience. All cabins are outside, half have private balconies, and aft suites even boast private outdoor Jacuzzis, to soak up the stunning scenery in style. Facilities on board One of the

most eye-catching exterior design features of the ships will be the two-level indoor/outdoor Observation Deck wrapped around the top of the ships' raked bow. In a vast area behind it, you'll find the core of the onboard experience: Amundsen Science Center. Packed with state of the art technology and high tech gadgets such as touch screens and science equipment, the immersive edutainment area will be the place guests and staff/crew meet, mingle and create a deeper understanding for the areas they explore. The flexible venue will feature lecture spaces, a small library, and speciality areas for workshops in photography, biology, and more. The stunning scenery will be reflected in a rich and comfortable interior design. Scandinavian materials from nature, such as granite, oak, birch and wool will be used to create relaxed and stylish cabins and public areas. All cabins are outside, 50 % will have private balconies, aft suites will feature private outdoor Jacuzzis with



spectacular views.

The Small Cruise Ship Collection
www.small-cruise-ships.com

01432 507 280 (within UK)

info@small-cruise-ships.com | small-cruise-ships.com



The Small Cruise Ship Collection

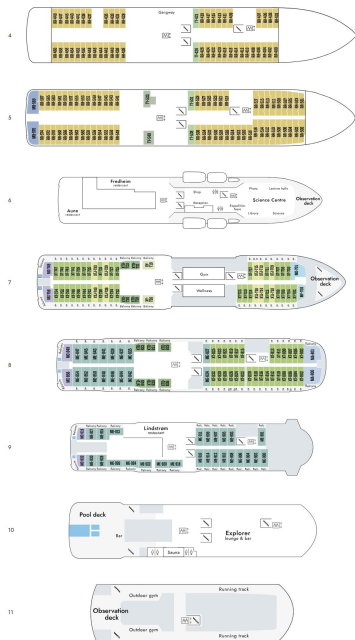
www.small-cruise-ships.com



small-cruise-ships.com

info@small-cruise-ships.com

INSIDE YOUR SHIP



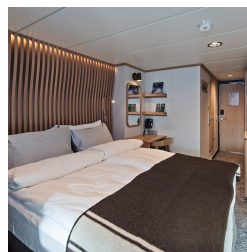
Arctic Superior. From



Expedition Suite. From



Polar Outside. From



The Small Cruise Ship Collection

www.small-cruise-ships.com

01432 507 280 (within UK)

info@small-cruise-ships.com | small-cruise-ships.com



The Small Cruise Ship Collection

www.small-cruise-ships.com



small-cruise-ships.com

info@small-cruise-ships.com

PRICING

22-May-2027 to 31-May-2027

Expedition Suite. From £6069 GBP pp

Arctic Superior. From £4209 GBP pp

Polar Outside. From £3795 GBP pp

12-Jun-2027 to 21-Jun-2027

Arctic Superior. From £4365 GBP pp

Expedition Suite. From £6289 GBP pp

Polar Outside. From £3935 GBP pp

03-Jul-2027 to 12-Jul-2027

Polar Outside. From £3935 GBP pp

Arctic Superior. From £4365 GBP pp

Expedition Suite. From £6289 GBP pp



The Small Cruise Ship Collection

www.small-cruise-ships.com

01432 507 280 (within UK)

info@small-cruise-ships.com | small-cruise-ships.com