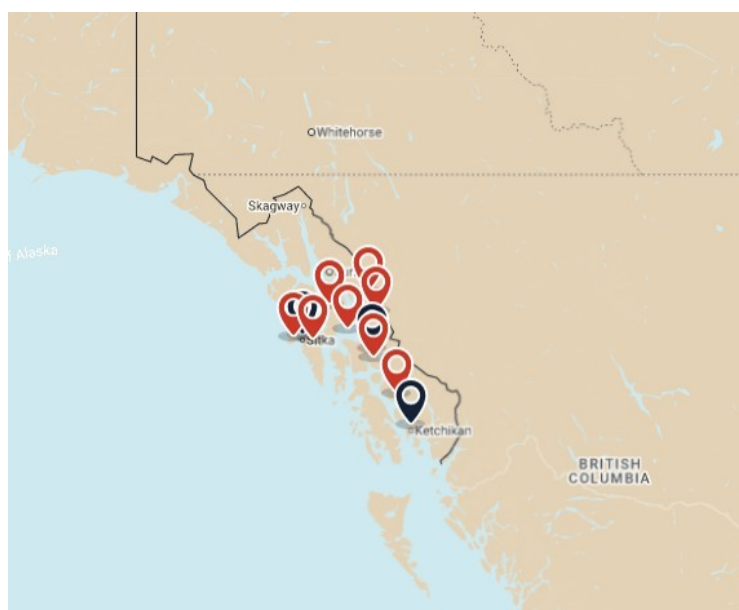




ALASKA CRUISE WITH CANADIAN GEOGRAPHIC

Pristine Wilderness Where the Bigger Ships Can't Reach
On our Alaska small ship cruises, we explore natural wonders aboard a classic, wooden tugboat designed for the ultimate in guest comfort. Expeditions provide an opportunity to personally connect with the natural and cultural history of Alaska's rugged Southeast, each day becoming more in tune with the rhythm of the coast. Travel with just a few guests, guided by the expert crew, naturalist, and guides of Maple Leaf Adventures.



ITINERARY

Days 1-3 Welcome Aboard!

On this special trip with the Royal Canadian Geographical Society, you will explore the same areas as our regular supervoyage itinerary, but with special extra experiences, benefits from the Geographical Society, and a VIP resource person.

Day 1: Board at Petersburg, cruising Frederick Sound, introduction to Alaskan natural world on shore walk. Wilderness anchorage.



The Small Cruise Ship Collection

www.small-cruise-ships.com



small-cruise-ships.com

info@small-cruise-ships.com

Please note:

Itineraries are subject to change.

Day 2: Rainforest walk along creek to waterfall, introduction to coastal rainforest. Whale watching, wildflower meadow walk. Optional evening kayak.

Day 3: Cruising spectacular fjord to tidewater glacier, icebergs, wildlife viewing. Option to zodiac, kayak and/or walk, exploring glacier, icebergs in this awesome ice world.

Days 4-6 Frederick Sound

Day 4: Humpback whales of Stephens Passage, Five Fingers Lighthouse, Windfall Harbour.

Day 5: Explore estuary and look for brown bears.

Day 6: Exclusive guided brown bear viewing and rainforest walk at estuary and forest site, Pack Creek.

Day 7: Frederick Sound marine mammals and islands. Trail walk and hot springs soak at hamlet of Baranof, then spectacular inlet anchorages.

Days 8-10 Sitka

Day 8: Hike through many ecotypes and on spectacular west coast beaches. Cruising the west coast, sea otters, seabirds.

Day 8: Tie up at historic town of Sitka and disembark for historic walking tour covering Tlingit, Russian and American history. Farewell dinner, hotel stay.

Day 10: Breakfast, museum visit, and free time to explore Sitka.



The Small Cruise Ship Collection

www.small-cruise-ships.com

01432 507 280 (within UK)

info@small-cruise-ships.com | small-cruise-ships.com



The Small Cruise Ship Collection

www.small-cruise-ships.com



small-cruise-ships.com

info@small-cruise-ships.com

YOUR SHIP: SWELL

YOUR SHIP:	Swell
VESSEL TYPE:	Converted Tug
LENGTH:	88 feet / 26.8 meters
PASSENGER CAPACITY:	12
BUILT/REFURBISHED:	

Swell is an 88-foot converted coastal tug refitted to deliver a warm, character-rich expedition experience. Her solid timber construction, classic lines and thoughtful interior upgrades create an atmosphere of authenticity paired with comfort. With just 12 guests across six private cabins, the ship offers an intimate environment supported by a small, expert crew. Spaces such as the wood-panelled salon, panoramic wheelhouse, covered aft deck lounges, and upper-deck viewing areas provide calm, inviting places to relax between shore excursions. Daily life revolves around well-crafted meals from the galley, quiet moments in the hot tub, wildlife watching from the bow and easy access to the coastline via Zodiacs and kayaks. Her compact size and rugged build allow her to reach locations inaccessible to larger vessels, giving guests close contact with coastal ecosystems, remote anchorages and wildlife-rich shorelines. Purpose-designed expedition tools—including two rigid-hull inflatables, four clear-bottom kayaks, fishing gear and a hydrophone—support a wide range of activities. Cabins vary from generous suites to efficient, well-designed smaller rooms, all with private ensuites and exterior doors for direct connection to the outdoors. The result is a boutique expedition platform that

blends maritime heritage with practical comfort, delivering a human-scale, highly immersive coastal cruising



experience.



The Small Cruise Ship Collection

www.small-cruise-ships.com

01432 507 280 (within UK)

info@small-cruise-ships.com | small-cruise-ships.com



The Small Cruise
Ship Collection

www.small-cruise-ships.com

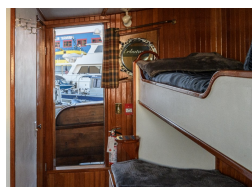


small-cruise-ships.com

info@small-cruise-ships.com

INSIDE YOUR SHIP

Cabin - Category 2, Option 1 Cabin - Category 2, Option 2



Cabin - Category 3

Cabins - Category 1



The Small Cruise
Ship Collection

www.small-cruise-ships.com

01432 507 280 (within UK)

info@small-cruise-ships.com | small-cruise-ships.com



The Small Cruise
Ship Collection

www.small-cruise-ships.com



small-cruise-ships.com

info@small-cruise-ships.com

PRICING

18-Jul-2026 to 27-Jul-2026

Cabin - Category 3	£9135 GBP pp
Cabin - Category 2, Option 1	£8305 GBP pp
Cabin - Category 2, Option 2	£8305 GBP pp
Cabins - Category 1	£7609 GBP pp

16-Jul-2027 to 25-Jul-2027

Cabin - Category 3	£9595 GBP pp
Cabin - Category 2, Option 1	£8719 GBP pp
Cabin - Category 2, Option 2	£8719 GBP pp
Cabins - Category 1	£7995 GBP pp

ADDITIONAL CHARGES:

Sustainability fee per person 150
USD pp



The Small Cruise
Ship Collection

www.small-cruise-ships.com

01432 507 280 (within UK)

info@small-cruise-ships.com | small-cruise-ships.com