



## The Small Cruise Ship Collection

[www.small-cruise-ships.com](http://www.small-cruise-ships.com)

[small-cruise-ships.com](http://small-cruise-ships.com)

[info@small-cruise-ships.com](mailto:info@small-cruise-ships.com)

## ALASKA AND BRITISH COLUMBIA – INSIDE PASSAGE, BEARS AND ALEUTIAN ISLANDS

Alaskan wildlife and Canadian fjords From Vancouver, we visit the pristine mountains and waterfalls of Misty Fjord and the glaciers of Icy Bay. In true expedition style, you'll go small boat cruising, watching seals relax on icebergs. Look out for black and brown bears as we tour Alaska's Kodiak Islands and Katmai National Park, and the spectacular seal and bird colonies of St Paul Island. Fascinating North American history As you cruise along the coast with the Expedition Team, learn about the region's native Aleut, Alutiiq and Tlingit peoples, historic Wrangell, Sitka's Russian influences, the WWII history of Dutch Harbor and the gold rush era in Nome.

### DAY 1 Vibrant Vancouver

Enjoy British Columbia's largest city Our expedition cruise starts with an overnight stay in the beautiful city of Vancouver at the foot of the Rocky Mountains. Vancouver's neighbourhoods buzz with restaurants offering delicious international cuisine. Don't miss Gastown, Vancouver's Victorian neighbourhood. Here you'll find Vancouver Lookout, offering 360° panoramic views over the city. If you have time, why not arrive early and join our optional Pre-Programme, taking a luxury train trip through the Rockies. What better way to begin your adventure.

### DAY 2 Vancouver city tour

Enjoy the incredible highlights of this fantastic city After a delicious breakfast at your hotel, you'll get your adventure under way with a fun tour taking in the highlights of this fantastic and vibrant city. Even if you've seen some already, they're always worth seeing again. We'll give you a taste of the sights and sounds that make Vancouver so unique and who knows? We may even inspire your next adventure. Our excursion ends at the pier, where you'll embark your hybrid-powered expedition ship, MS Roald Amundsen, meet your Expedition Team and settle in. It's time to begin your Alaskan adventure.

### DAY 3 Canada's Inside Passage

Up close to nature as we explore islands and channels The Inside Passage coastal route takes us through great North American Pacific Fjordland, a protected stretch of water over 930 miles long. Unlike other cruises which pass through at night, we'll visit during the day. This sublime scenery is something you'll want to make the most of. Our smaller

## ITINERARY

The Small Cruise Ship Collection

[www.small-cruise-ships.com](http://www.small-cruise-ships.com)

01432 507 280 (within UK)

[info@small-cruise-ships.com](mailto:info@small-cruise-ships.com) | [small-cruise-ships.com](http://small-cruise-ships.com)



## The Small Cruise Ship Collection

[www.small-cruise-ships.com](http://www.small-cruise-ships.com)

[small-cruise-ships.com](http://small-cruise-ships.com)

[info@small-cruise-ships.com](mailto:info@small-cruise-ships.com)

expedition ship allows us to explore the lesser-travelled channels, so we can get closer to the beautiful and fascinating scenery. Keep your cameras and binoculars at the ready, as you catch sight of dolphins, porpoises, orcas and humpback whales. As always, there's plenty to see and learn in the Science Center, with insightful lectures from your Expedition Team.

#### DAY 4 Beautiful Misty Fjords

Alaskan wilderness where wildlife thrives all around Part of the Tongass National Forest, Misty Fjords is a pristine wilderness of evergreens, waterfalls and snow-capped peaks. Influential mountaineer John Muir described it as one of the most beautiful places he'd ever seen. Weather permitting, you'll join the Expedition Team to tour Misty Fjords on small expedition boats or take kayaks out for an optional excursion. Look out for mountain goats, bears and moose. In the water, you'll find Pacific salmon, along with otters, sea lions, harbour seals, orcas and Dall porpoises. And look skywards for hummingbirds, herons and Bald Eagles.

#### DAY 5 Wrangell's Petroglyphs

Visit one of Alaska's oldest harbour towns Your cruise continues to Wrangell. Nearby is the incredible Petroglyph Beach, where you'll find around 50 ancient rock carvings. Bring paper to make some stone rubbings. Visit the local museum to learn about Wrangell's fascinating past. Now part of the US, it was once governed by Britain, Russia and Tlingit people. Cross to Shakes Island, where the Chief Shakes Tribal House and totem poles tell the story of the indigenous Tlingit. Surrounded by the alluring scenery around Stikine River and Mount Dewey, you'll enjoy the nature trails. Alternatively, join the included activity, taking small expedition boats through the breathtaking scenery and glaciers of the waters around Wrangell.

#### DAY 6 Sitka's blend of cultures

Stunning scenery and a unique mix of cultures Surrounded by Tongass National Forest, Sitka is only accessible by sea and air. Get out on deck for stunning views of the Sisters Mountains and Mount Edgecumbe Volcano. Discover Sitka's fascinating history with our Expedition Team. Inhabited by the Tlingit for 10,000 years, it was occupied by Russia in 1804, before being sold to America after the Crimean War. Today, Sitka blends all three cultures. Visit the Russian Orthodox cathedral and Russian Bishop's House. Sitka National Historic Park is a real highlight, where you'll see ornate Haida and Tlingit totem poles. Or enjoy a walking trail through the forest to the ocean.

#### DAY 7 The glaciers of Icy Bay

Wildlife watching in glacier-fed waters You'll experience an amazing expedition day in Icy Bay today. Three glaciers – Guyot, Yahtse and Tyndall – regularly calf into the bay. If conditions allow, the Expedition Team will take you ashore on the 34-mile-long, 8-mile-wide Guyot Glacier or you can explore in kayaks on an optional excursion. Wildlife abounds in the Gulf of Alaska, offering unrivalled photography opportunities. Humpback whales, orcas, Stellar sea lions, sea otters and harbour seals lazing on floating chunks of ice, can be seen in these waters. Our onboard photographer is ready with expert tips on how to get the best from your camera.

#### DAY 8 Across the Gulf of Alaska

A day of discovery, wellness and birdwatching at sea Our cruise continues across the Gulf of Alaska. It's the ideal time to enjoy onboard facilities like the infinity pool and hot tubs or sauna. Hit the gym, go for a run, or enjoy a massage in the spa. In the Science Center, the Expedition Team invite you to join lectures about the region's wildlife, geology, glaciology, history and

The Small Cruise Ship Collection  
[www.small-cruise-ships.com](http://www.small-cruise-ships.com)

01432 507 280 (within UK)

[info@small-cruise-ships.com](mailto:info@small-cruise-ships.com) | [small-cruise-ships.com](http://small-cruise-ships.com)



## The Small Cruise Ship Collection

[www.small-cruise-ships.com](http://www.small-cruise-ships.com)

[small-cruise-ships.com](http://small-cruise-ships.com)

[info@small-cruise-ships.com](mailto:info@small-cruise-ships.com)

culture, preparing for our next landings. Relax in the Explorer Lounge and share a drink with your fellow shipmates or just enjoy the view. See if you can spot all three species of North Atlantic albatross. Laysan and Black-footed Albatrosses are fairly common but Short-tailed Albatrosses are a rare sight.

### DAY 9 Kodiak's brown bears

Home of the Alutiiq people and Kodiak brown bear Spruce forests and grasslands earned Kodiak Island its nickname: 'the Emerald Isle'. It's the second largest island in the US, which means there's plenty to see. You'll discover the island's rich indigenous heritage at the Alutiiq Museum. Visit the 1808 Baranov Museum, the oldest standing building in the state. Your included excursion today takes you to Fort Abercrombie State Historical Park, with its strategic WWII 1939 naval fort and bunkers. The island's most famous inhabitants though are the Kodiak bears. Around 3,500 of these mighty creatures live in Kodiak National Wildlife Refuge, which covers two thirds of the island.

### DAY 10 Grizzly bears in Katmai

Grizzly bears and volcanoes in Katmai National Park The bear spotting continues today in the four million acre Katmai National Park, with over a dozen active volcanoes. Katmai is home to communities of brown bears, and more than 2,000 protected grizzly bears - the largest concentration in the world. Accompanied by an experienced bear guard, we'll be safely scouting for grizzlies from on deck or in small expedition boats. The bears might be foraging for berries, diving for clams, or catching fish in the stream. Depending on conditions, we'll either visit Geographic Harbor, Kinak Bay or Kukak Bay. Keep your eyes open for sea otters, seabirds and humpback whales too.

### DAY 11 Fishing town of Chignik

Local life in a small Alaskan fishing town Our expedition cruise continues to Chignik - where the Aleutian Mountains meet the Gulf of Alaska. You'll want to head out to the local salmon streams for some fantastic photo opportunities. An included visit to this small fishing village gives you the chance to learn more about everyday life, where red salmon fishing has supported the local economy for over a century. Stop in at the fish factory or have a chat with the friendly locals at the dock. This area is a treat for birdwatchers. More than 20 different species of waterfowl thrive in the area. Mighty Bald Eagles roam the skies here, so make sure to bring your binoculars.

### DAY 12 The ghost town of Unga

Explore Unga - an Alaskan ghost town Wild and deserted, Unga Village is a picturesque, abandoned Alaskan town on the southern end of Unga Island in the remote Aleutian Islands. It was settled by Aleuts in 1833 but was abandoned in 1969 as subsistence fishing proved insufficient to support living here. Today, the handful of wooden buildings that remain are the only evidence that people once lived here. Pink lousewort, a carpet of wildflowers, and fireweed surround the abandoned shacks as nature has gradually taken over. If weather permits, we'll explore that nature on our included landing.

### DAY 13 Discover Dutch Harbor

Diverse history and rich wildlife in a vibrant fishing hub With a volcano as its backdrop, America's largest fishing port Dutch Harbor is a fascinating place to visit. You'll be able to explore to the full with your included hop-on, hop-off shuttle ticket. Learn about the local indigenous Unungan people at the Museum of the Aleutians. Visit the Russian Orthodox Cathedral, or tour the WWII Museum commemorating the 1942 battle that took place

The Small Cruise Ship Collection

[www.small-cruise-ships.com](http://www.small-cruise-ships.com)

01432 507 280 (within UK)

[info@small-cruise-ships.com](mailto:info@small-cruise-ships.com) | [small-cruise-ships.com](http://small-cruise-ships.com)



## The Small Cruise Ship Collection

[www.small-cruise-ships.com](http://www.small-cruise-ships.com)

[small-cruise-ships.com](http://small-cruise-ships.com)

[info@small-cruise-ships.com](mailto:info@small-cruise-ships.com)

here. Scout for Bald Eagles and puffins in the skies. Foxes, lemmings and wild horses thrive on land and whales, sea lions and porpoises in the waters. Dutch Harbor is where reality television series 'The Deadliest Catch' was filmed, following crab fishers at work under extreme conditions.

#### DAY 14 Learning and leisure

Enjoy the moment as we cruise along the coast Part of being on an expedition is taking time out to connect with the sights and sounds of the world around you. A day at sea lets you do just that. Sit back and take in the panoramic views from our Explorer Lounge, or enjoy the scenery glides by from the infinity pool or the outdoor hot tubs. Keep scanning the seas and skies for puffins, auklets, and murrelets, especially closer to the coast. If you're lucky, you might glimpse the Red-legged Kittiwake, only found in this part of the world. You'll learn more about the region's geography, climate and birdlife from the Expedition Team in the Science Center and in their daily lecture programme.

#### DAY 15 Aleut life in St Paul

Culture and wildlife on the largest Pribilof Island The windswept island of St Paul is home to the largest Aleut community in the US, numbering around 400. You can visit the historical remains of barabaras here – traditional dwellings built half underground to protect against the sea winds. St Paul is also designated an Important Bird Area. Around 300 species of migrating birds use it as a resting point. Keep a lookout for Horned and Tufted Puffins, the Pribilof Sandpiper and the rare Red-legged Kittiwake. By the shore, you'll also find northern fur seals waddling and playing – half the world's population of these charming animals live on these islands.

#### DAY 16 Remote St Matthew

Deserted settlements and rare birds on this remote island Part of the Alaska Maritime National Wildlife Refuge, 200 miles from the nearest village, St Matthew Island is wild, remote and isolated. A few hardy souls have tried – and failed – to make a home here. You can see traces of abandoned buildings between black sand beaches and wildflower-dotted tundra. Today, the only inhabitants are birds, including thousands of puffins, murres and cormorants. If you're lucky on our included nature landing, you'll catch sight of the rare McKay's bunting, which breeds almost exclusively here. And listen out for the sound of the singing vole, named after its unusual warning cry.

#### DAY 17 Crossing the Bering Sea

International Date Line – where tomorrow meets today As we cruise the Bering Sea, you'll have Russia to the east and the United States to the west. We'll also cross the International Date Line, where 'tomorrow' is on your right, and 'today' is on your left. Natural wonders abound here so keep an eye out for humpback whales, and spot seabirds wheeling through the skies. This is your last full sea day so relax and enjoy your time on board. The Expedition Team will recap the highlights of your Alaskan adventure, and you can continue your journey of discovery in the Science Center.

#### DAY 18 No place like Nome

Fascinating history of gold prospectors and explorers Prospectors first came to Nome in 1898, and people still hunt for gold here today. You'll see evidence of the gold rush all around, including abandoned dredges, turn-of-the century steam engines and old railroad tracks, lending the town a unique atmosphere. You'll be in good company as you explore the town. Wyatt Earp, the famous sheriff opened a saloon here,

The Small Cruise Ship Collection

[www.small-cruise-ships.com](http://www.small-cruise-ships.com)

01432 507 280 (within UK)

[info@small-cruise-ships.com](mailto:info@small-cruise-ships.com) | [small-cruise-ships.com](http://small-cruise-ships.com)



The Small Cruise  
Ship Collection

[www.small-cruise-ships.com](http://www.small-cruise-ships.com)

[small-cruise-ships.com](http://small-cruise-ships.com)

[info@small-cruise-ships.com](mailto:info@small-cruise-ships.com)

and Nome was also the end point of three of Roald Amundsen's great polar expeditions, including an aircraft attempt to reach the North Pole in 1926. A fitting place to bid farewell to our own MS Roald Amundsen, before flying back to bustling Vancouver.

**DAY 19 Back to Vancouver**

Explore more of Vancouver or extend your adventure. Our expedition ends where it began, giving you another chance to discover this exciting city. Take in the café culture of Granville Island or head to Richmond's famous multicultural night market for treats from the tasty food stalls. There are plenty of galleries, museums, events, exhibitions and shows. If you'd simply like to take it easy, head for the sands of Kitsilano Beach. Extend your adventure with our Post-Programme to the nearby mountain resort of Whistler. We'll stop in Shannon Falls and visit the nearby Sea to Sky Gondola, which takes you on a panoramic ride almost 3,000 feet above sea level.

**Please Note:**

Itineraries are subject to change.

The Small Cruise  
Ship Collection

[www.small-cruise-ships.com](http://www.small-cruise-ships.com)

**01432 507 280** (within UK)

[info@small-cruise-ships.com](mailto:info@small-cruise-ships.com) | [small-cruise-ships.com](http://small-cruise-ships.com)



## The Small Cruise Ship Collection

[www.small-cruise-ships.com](http://www.small-cruise-ships.com)

[small-cruise-ships.com](http://small-cruise-ships.com)

[info@small-cruise-ships.com](mailto:info@small-cruise-ships.com)

### YOUR SHIP: FRIDTJOF NANSEN

**YOUR SHIP:** Fridtjof Nansen

**VESSEL TYPE:**

**LENGTH:**

**PASSENGER CAPACITY:**

**BUILT/REFURBISHED:**

Fridtjof Nansen is a small cruise ship specifically designed to be one of the most sustainable ships that can visit the Polar regions. Launched in 2020, The state of the art vessel features new and environmentally sustainable hybrid technology that will reduce fuel consumption and show the world that hybrid propulsion on large ships is possible. MS Fridtjof Nansen is the second of two hybrid ships to be launched cutting emissions by sailing with electrical propulsion. Hybrid technology, combined with the advanced construction of the hull and effective use of electricity on board will reduce fuel consumption and CO2-emissions on the ships by 20 percent. The future of shipping will be silent and emission free. MS Fridtjof Nansen will lead the way towards an even more sustainable way of traveling. Sailing on electrical power is not only a great benefit for the environment, but it will also enhance the impact of experiencing nature for the guests. The ship will be specially constructed for voyages in polar waters and serve as a comfortable basecamp at sea - bringing adventurers from all over the world to the most spectacular destinations in the most sustainable way. These ships combine state-of-the-art technology together with a premium onboard experience. All cabins are outside, half have

private balconies, and aft suites even boast private outdoor Jacuzzis, to soak up the stunning scenery in style. Facilities on board One of the most eye-catching exterior design features of the ships will be the two-level indoor/outdoor Observation Deck wrapped around the top of the ships' raked bow. In a vast area behind it, you'll find the core of the onboard experience: Amundsen Science Center. Packed with state of the art technology and high tech gadgets such as touch screens and science equipment, the immersive edutainment area will be the place guests and staff/crew meet, mingle and create a deeper understanding for the areas they explore. The flexible venue will feature lecture spaces, a small library, and speciality areas for workshops in photography, biology, and more. The stunning scenery will be reflected in a rich and comfortable interior design. Scandinavian materials from nature, such as granite, oak, birch and wool will be used to create relaxed and stylish cabins and public areas. All cabins are outside, 50 % will have private balconies, aft suites will feature private outdoor Jacuzzis with



The Small Cruise Ship Collection  
[www.small-cruise-ships.com](http://www.small-cruise-ships.com)

01432 507 280 (within UK)

[info@small-cruise-ships.com](mailto:info@small-cruise-ships.com) | [small-cruise-ships.com](http://small-cruise-ships.com)



# The Small Cruise Ship Collection

[www.small-cruise-ships.com](http://www.small-cruise-ships.com)



[small-cruise-ships.com](http://small-cruise-ships.com)

[info@small-cruise-ships.com](mailto:info@small-cruise-ships.com)

spectacular views.



The Small Cruise Ship Collection

[www.small-cruise-ships.com](http://www.small-cruise-ships.com)

**01432 507 280** (within UK)

[info@small-cruise-ships.com](mailto:info@small-cruise-ships.com) | [small-cruise-ships.com](http://small-cruise-ships.com)

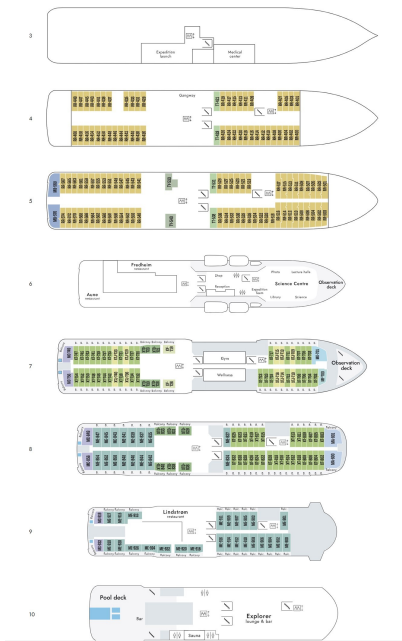
# The Small Cruise Ship Collection

www.small-cruise-ships.com

small-cruise-ships.com

info@small-cruise-ships.com

## INSIDE YOUR SHIP



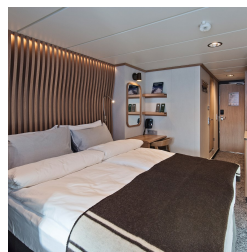
Arctic Superior. From



Expedition Suite. From



Polar Outside. From





# The Small Cruise Ship Collection

[www.small-cruise-ships.com](http://www.small-cruise-ships.com)



[small-cruise-ships.com](http://small-cruise-ships.com)

[info@small-cruise-ships.com](mailto:info@small-cruise-ships.com)

## PRICING

### 24-Jul-2026 to 12-Aug-2026

Expedition Suite. From £13153 GBP pp

Arctic Superior. From £9788 GBP pp

Polar Outside. From £9033 GBP pp

### 06-Sep-2026 to 24-Sep-2026

Expedition Suite. From £12054 GBP pp

Polar Outside. From £8174 GBP pp

Arctic Superior. From £8885 GBP pp

### 24-Jul-2027 to 10-Aug-2027

Arctic Superior. From £7145 GBP pp

Expedition Suite. From £10295 GBP pp

Polar Outside. From £6435 GBP pp

### 02-Sep-2027 to 19-Sep-2027

Polar Outside. From £5539 GBP pp

Arctic Superior. From £6145 GBP pp

Expedition Suite. From £8859 GBP pp