

The Small Cruise Ship Collection

www.small-cruise-ships.com

small-cruise-ships.com

info@small-cruise-ships.com

ALASKA 7 NIGHT CRUISE - FJORDS & GLACIERS

Skiff, kayak, and paddleboard through fjords and inlets as wildlife greets you from land and sea. See the Tongass and Glacier Bay National Park as Alaskans do, by hike and bushwhack. The channel began to fill up with more and more ice before the skipper decided that was as far as the ship could go, so we took to the Zodiacs to navigate a mile or two towards the glacier. We spotted the brilliant white coats of several mountain goats stark against the granite walls of the valley, and several curious seals broke the surface as we cruised by. This would all have been spectacular in any weather, but due to severe 'cloud failure' the whole scene of the vast glacier and mountain backdrop was set against a brilliant blue cloudless sky - Quite breath-taking. And all helped along by a cup of hot chocolate charged with some schnapps - No idea where the yardarm was but the sun was definitely up. What an hors d'oeuvre. The main course was to follow. - I know people who go on 2 weeks cruises in the hope of seeing what we saw in the next 4 hours. As we left the 30 mile long Endicott Arm we saw our first spout and the cry 'Humpback' went out. A lone whale feeding a little way off, but it got the pulse going a little. We saw a couple more in the distance as we cruised down the main channel, but towards dusk we spotted at first one, then two, and then dozens of spouts all around. I counted a minimum of 24 whales all around us, mostly in the distance, but not all. I couldn't drag myself away - so I was late for dinner (fresh halibut or seared duck).



ITINERARY

DAY 1 Juneau Embarkation

Arriving in Juneau and met with a warm welcome, that's a good start. You have time to take in a bit of the city once you check in at the hospitality area. But after boarding, grab a glass of bubbly as you push off the dock. Set sail for the Endicott Arm wilderness. (D)

DAY 2 Endicott Arm or Tracy Arm

The Small Cruise Ship Collection
www.small-cruise-ships.com

01432 507 280 (within UK)

info@small-cruise-ships.com | small-cruise-ships.com



The Small Cruise Ship Collection

www.small-cruise-ships.com



small-cruise-ships.com

info@small-cruise-ships.com

Take an early peek out your window. Fjord cliffs reach skyward. Floating ice. And deep u-shaped valleys. There's no abracadabra here. Mother Nature's magic is real. Cruise past harbor seals and their pups lounging on chunks of ice. At the end of Endicott, the blue face of Dawes Glacier is stories high. And in classic fjord form, Tracy Arm delivers with the cotton candy blue Twin Sawyers glacier of its furthest reaches. Tides permitting, your skiff driver knows the ropes and guides you along. It's a mashup of towering walls, temperamental currents, and the Coastal Mountains. So many waterfalls. Mountain goats show off fancy foot work on the cliffs. Look for them. (BLD)

DAY 3 Frederick Sound

Humpbacks beeline it here each season to feed on krill, zooplankton, and herring. Watch for whales feasting in these abundant glacial waters. Hang out and enjoy the show. Based on wind and weather, your expedition team has the lineup of adventures all mapped out. Cruise past Five Fingers Lighthouse, Alaska's oldest light station and The Brothers Islands, where sea lions nap on rocky nobs. Paddle into the deeps of Port Houghton or Windham Bay or head ashore for a hike. Somewhere nearby, carrot-billed black oystercatchers are saying hello. Tonight, toast another big day in Alaska. (BLD)

DAY 4 Thomas Bay - Wrangell Narrows

When you come this far, you might as well go all in. This is way back backcountry of Alaska's wilderness. Glacial landscapes

marked by moraines, muskegs, and mud. In this playground, it's all an option today. Kayak and skiff in water almost clear as glass. The mirror image of fjord walls plays on the surface. Hike through the outwash of Baird Glacier. Or keep it green on an interpretive walk through a grassy meadow into the forest. Later, wind into the Wrangell Narrows. Abundant bright red and green navigation lights guide the way. It's nicknamed "Christmas Tree Lane," of course. (BLD)

DAY 5 Blashkee Islands

The Blashkee Islands are your playground today. A full day of choose-your-own-adventure fun. Hiking, Kayaking, skiff tours, snorkeling, and full day yak-n-whack excursions. Get ready for a full day! (BLD)

DAY 6 Behm Canal

Wildlife abounds. Black bears, mink, eagles. In Behm Canal, it's all remote waterways and the isolated Tongass National Forest. On Cleveland Peninsula, your expedition team leads a low-elevation hike near clear, rushing streams. Good opportunities for enticing forested shots of Southeast. In the water orca, porpoises, seals, and otters go about their business. Go about yours on a guided paddle in tiny, deserted waterways that feed into Behm Canal. (BLD)

DAY 7 Misty Fjords National Monument

There are places on the planet that completely overcome you.



The Small Cruise Ship Collection

www.small-cruise-ships.com

01432 507 280 (within UK)

info@small-cruise-ships.com | small-cruise-ships.com



This is one of them. The sense of place you feel. Misty Fjords National Monument represents nearly every ecosystem found in Southeast Alaska. And that alone is a lot to consider. Glacial valleys filled with sea water. Sheer 3,000 foot cliffs. Sea birds, brown and black bears, mountain goats, Sitka black-tailed deer, all find safe haven here. Kayak in Walker Cove or Rudyerd Bay and you find it's just as easy to paddle and go, as it is to sit and float and take it all in. Or skiff to the base of a waterfall for a fjord-released shower. Your captain joins you tonight for a Farewell Dinner. Celebrate and reminisce about your Alaskan journey with a "photo journal" by your crew. (BLD)

DAY 8 Ketchikan Disembarkation

After breakfast this morning, bid adieu to your new pals before you disembark and transfer to the Ketchikan airport or begin your extended UnCruise hotel stay or land tour. (B)

Please Note:

Passport required (non USA citizens). Itineraries are guidelines; variations in itinerary and the order of days may occur to maximize your experience.



The Small Cruise
Ship Collection

www.small-cruise-ships.com



small-cruise-ships.com

info@small-cruise-ships.com

YOUR SHIP: WILDERNESS DISCOVERER

YOUR SHIP:

Wilderness Discoverer

VESSEL TYPE:

LENGTH:

PASSENGER CAPACITY:

BUILT/REFURBISHED:

The 76-guest Wilderness Discoverer gets rave reviews from her guests. Expedition is top-of-mind with this vessel; and adventure and discovery lay at its heart. The interior complements the outside and public and private spaces are loaded with amenities. Enjoy a main lounge that evokes the feel of a National Park Lodge or neighborhood pub and relax on deck or keep watch for wildlife. Three accessible decks are fully equipped for comfort and action. The sun deck has a sauna and fitness equipment; viewing is over-the-top from the bow and under-the-stars from two hot tubs on the observation deck; and the EZ Dock launch platform on the main deck makes getting in the water a cinch. Onboard are kayaks; stand-up paddle boards; inflatable skiffs; hiking poles; yoga mats; hydrophone for listening below-surface; and a bow-mounted underwater camera pipes the action to the lounge and to your cabin TV. The four cabin categories aboard the Wilderness Discoverer are: Navigator; Trailblazer; Pathfinder; and Explorer. Depending on your cabin, singles, doubles or triples can be accommodated. Common to all Wilderness Discoverer cabins are: Memory foam mattresses; Flat-screen TV/DVD; and iPod docking station. All staterooms come with a view window (no portholes).



The Small Cruise
Ship Collection

www.small-cruise-ships.com

01432 507 280 (within UK)

info@small-cruise-ships.com | small-cruise-ships.com

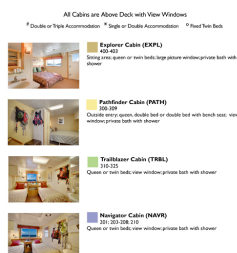
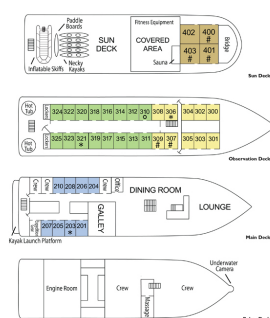
The Small Cruise Ship Collection

www.small-cruise-ships.com

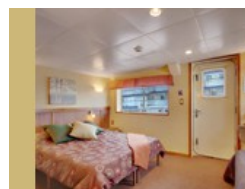
small-cruise-ships.com

info@small-cruise-ships.com

INSIDE YOUR SHIP



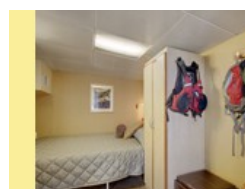
Admiral Cabin



Navigator Cabin



Pathfinder Cabin



Single





The Small Cruise Ship Collection

www.small-cruise-ships.com



small-cruise-ships.com

info@small-cruise-ships.com

PRICING

14-Sep-2025 to 21-Sep-2025

Pathfinder Cabin	£3542 GBP pp
Navigator Cabin	£2926 GBP pp
Admiral Cabin	£4235 GBP pp
Trailblazer Cabin	£3234 GBP pp
Single	£5159 GBP pp

12-Apr-2026 to 19-Apr-2026

Admiral Cabin	£4235 GBP pp
Trailblazer Cabin	£3234 GBP pp
Navigator Cabin	£2926 GBP pp
Single	£5159 GBP pp
Pathfinder Cabin	£3542 GBP pp

28-Jun-2026 to 05-Jul-2026

Trailblazer Cabin	£5313 GBP pp
Single	£8316 GBP pp
Pathfinder Cabin	£5775 GBP pp
Navigator Cabin	£4697 GBP pp
Admiral Cabin	£7007 GBP pp

05-Jul-2026 to 12-Jul-2026

Single	£8316 GBP pp
Admiral Cabin	£7007 GBP pp
Pathfinder Cabin	£5775 GBP pp
Trailblazer Cabin	£5313 GBP pp
Navigator Cabin	£4697 GBP pp

02-Aug-2026 to 09-Aug-2026

Admiral Cabin	£7007 GBP pp
Navigator Cabin	£4697 GBP pp
Single	£8316 GBP pp
Pathfinder Cabin	£5775 GBP pp
Trailblazer Cabin	£5313 GBP pp

09-Aug-2026 to 16-Aug-2026

Single	£8316 GBP pp
Pathfinder Cabin	£5775 GBP pp
Trailblazer Cabin	£5313 GBP pp
Admiral Cabin	£7007 GBP pp
Navigator Cabin	£4697 GBP pp

27-Sep-2026 to 04-Oct-2026

Single	£5159 GBP pp
Trailblazer Cabin	£3234 GBP pp
Navigator Cabin	£2926 GBP pp
Admiral Cabin	£4235 GBP pp
Pathfinder Cabin	£3542 GBP pp

ADDITIONAL CHARGES:

Port Taxes and Fees 375 USD pp



The Small Cruise Ship Collection

www.small-cruise-ships.com

01432 507 280 (within UK)

info@small-cruise-ships.com | small-cruise-ships.com