

## The Small Cruise Ship Collection

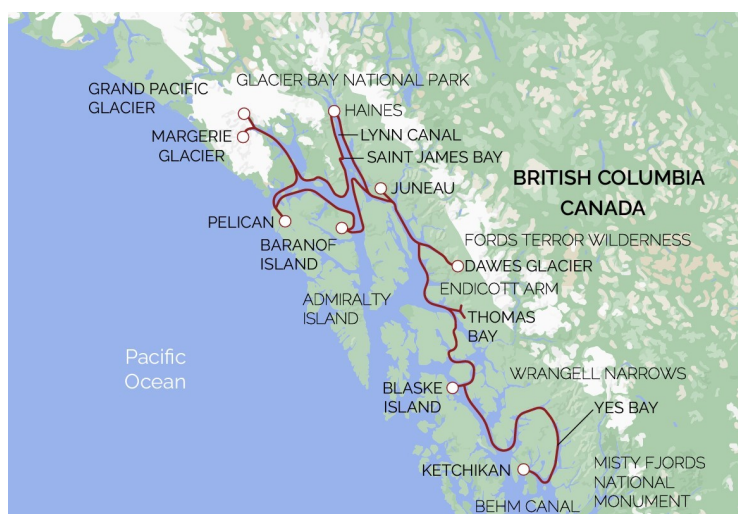
www.small-cruise-ships.com

small-cruise-ships.com

info@small-cruise-ships.com

### ALASKA ADVENTURE CRUISE - ALASKA FJORDS AND GLACIER BAY - 15 DAYS

Experience the Wonder of Wild Places The ultimate Alaska. Spend two days in Glacier Bay National Park, skiff to glaciers, hike in the Tongass National Forest, and learn about Native cultures.



#### ITINERARY

##### DAY 1 Juneau Embarkation

Arriving in Juneau, you will be transferred from the airport to our checkin area. Upon boarding, your crew greets you with champagne and smiles. Set sail for a week of scenic channels and secluded wilderness dining on fresh, inspired local cuis. (D)

##### DAY 2 Saint James Bay Park

Just what you need, morning stretches on deck with your guide. Warm those hard-at-play muscles. You know firsthand conditions in Southeast change one inlet to the next. Your captain is at the helm and picks just the right spot. The adventures are as big as the water is deep! So many hidden pockets in the Tongass National Forest. Give your paddle board skills a glide. Watch for big-eyed harbor seals from a kayak.



## The Small Cruise Ship Collection

[www.small-cruise-ships.com](http://www.small-cruise-ships.com)

[small-cruise-ships.com](http://small-cruise-ships.com)

[info@small-cruise-ships.com](mailto:info@small-cruise-ships.com)

Bushwhack into the forest of giants. Your guides know the area's history and keep it lively. (BLD)

### DAY 3 Haines

The center of adventure. Tucked beneath snowcapped peaks, Haines has it all. Hiking, biking, kayaking, and history. One thing's for sure—the trails are irresistible. Go easy, or feel the burn—whatever your speed, the views reward in spades. Your expedition team shares the city's captivating history. A trading outlet for Chilkat Tlingit, they called it "Dtehshuh"—the end of the trail. European explorers, the Klondike gold rush, a U.S. Army outpost—influences still apparent today. What holds your interest? Follow your curiosity on a self-led tour. (BLD)

### DAY 4 Icy Strait / George Island

Before you do anything, look out the window. From kelp-lined channels to hemlock and spruce forests, every inch of this far northwest corner is worth exploring. And if the tides are right, head out in the skiff with one of the guides for a closer exploration of the rugged shore. Seals and sea lions haul out on rocky outcroppings, resting before they disappear in the water to search for food. On the famed "George Island", hike with a close-up opportunity for sea otters and a World War II cannon that sits in the wilderness today. Whatever you do—wilderness trekking, skiffing, or paddling—our experienced crew is with you every step of the way. (BLD)

### DAY 5 Lisianski River / Pelican Town

The tiny fishing community (75 year round residents) of Pelican plays host to sport fishermen and kayakers in the summer. Join your guide for a 6 mile hike on the Lisianski trail, or a 4-mile trek through old-growth forest and an historic mining area on Bohemia Basin. Take a skiff or kayak along the coast in search

of brown bears, Sitka black-tail deer, whales, orca, sea lions, or rafts of sea otters. (BLD)

### DAY 6 Glacier Bay National Park

South Marble Island is abuzz with activity. View the sea lions at play. They add a distinct aroma to the air, too. Watch rare sea birds, black oystercatchers, and orange-beaked tufted puffins can't be missed. Tucking into silent Tidal Inlet—the stomping grounds for bears, wolves, mountain goats, eagles—the backdrop is spectacular. At the end of the western-most arm of the bay sits Margerie and Grand Pacific Glaciers. And possible views of glacial calving. (BLD)

### DAY 7 Chichagof Island & Neka Bay

Remote passages offer more opportunities for you to search for the mighty humpback whale. Keep your binoculars at hand and watch for the misty spout of these gentle giants as they feed in the waters around you. Anchor in a remote Chichagof Island inlet. Backpacks loaded and adventure toys lowered (skiffs, paddle boards, kayaks), it's time to go play. Stick to the water in a kayak excursion, and don't forget to look above and below the surface. A nosy seal could be watching your every stroke while you spy tiny creatures clinging to rock, or beachcomb the rocky shores. (BLD)

### DAY 8 Juneau

You might choose to purchase a tramway ticket that provides a ride up the Mt. Roberts Tram, where views unfold as you ascend 1,800 feet through the forest. At the top, explore the trails and Nature Center; back at the bottom, explore Alaska's heritage at the Alaska State Museum. Both options also include a lunch voucher for a local restaurant. Complimentary laundry service is provided today. (BLD)

The Small Cruise Ship Collection  
[www.small-cruise-ships.com](http://www.small-cruise-ships.com)

01432 507 280 (within UK)

[info@small-cruise-ships.com](mailto:info@small-cruise-ships.com) | [small-cruise-ships.com](http://small-cruise-ships.com)





## The Small Cruise Ship Collection

[www.small-cruise-ships.com](http://www.small-cruise-ships.com)

[small-cruise-ships.com](http://small-cruise-ships.com)

[info@small-cruise-ships.com](mailto:info@small-cruise-ships.com)

### DAY 9 Tracy Arm / Fords Terror Wilderness

Jutting off Stephens Passage with two deep, glacially carved fjords, this designated wilderness area contains over 600,000 acres. Cruise past chunks and chunks of floating ice. It's a harbor seal's delight lazing away the day atop a floating bergie. If conditions are right, skiffs are the ticket to getting in close. (BLD)

### DAY 10 Frederick Sound

Humpback whales are frequent visitors of this Southeast passage. A misty spout is a sure sign they're in the neighborhood. Your captain navigates Stephens Passage to Port Houghton. And you're in for a boot-sucking, paddle-smacking day of adventure with your guide team. The routes are all picked out. Make your choice and make your move. Slip off the kayak launch and take it slow spotting sea stars and shore birds. Hard chargers take a long wild paddle to the salt chuck at the back of the inlet. Or, hike into the Tongass. (BLD)

### DAY 11 Thomas Bay / Wrangell Narrows

When you come this far, you might as well go all in. This is way back backcountry of Alaska's wilderness. Glacial landscapes marked by moraines, muskegs, and mud. In this playground, it's all an option today. Kayak and skiff in water almost clear as glass. The mirror image of fjord walls plays on the surface. Hike through the outwash of Baird Glacier. Or keep it green on an interpretive walk through a grassy meadow into the forest. Later, wind into the Wrangell Narrows. Abundant bright red and green navigation lights guide the way. It's nicknamed "Christmas Tree Lane," of course. (BLD)

### DAY 12 Blashkee Islands

The Blashkee Islands are your playground today. A full day of choose-your-own-adventure fun. Hiking, Kayaking, skiff tours, snorkeling, and full day yak-n-whack excursions. Get ready for a full day! (BLD)

### DAY 13 Behm Canal

Wildlife abounds. Black bears, mink, eagles. In Behm Canal, it's all remote waterways and the isolated Tongass National Forest coves, streams, and bays. On Cleveland Peninsula, your expedition team leads a low-elevation hike near clear, rushing streams. Good opportunities for enticing forested shots of Southeast. In the water orca, porpoises, seals, and otters go about their business. Go about yours on a guided paddle in tiny, deserted waterways that feed into Behm Canal. (BLD)

### DAY 14 Misty Fjords

There are places on the planet that completely overcome you. This is one of them. The beauty. The peace. The sense of place you feel. Misty Fjords National Monument represents nearly every ecosystem found in Southeast Alaska. And that alone is a lot to consider. Glacial valleys filled with sea water. Sheer 3,000-foot cliffs. Sea birds, brown and black bears, mountain goats, Sitka black-tailed deer, all find safe haven here. Kayak in Walker Cove or Rudyerd Bay and you find it's just as easy to paddle and go, as it is to sit and float and take it all in. Or skiff to the base of a waterfall for fjord-released shower. Its affectionate nickname, "The Yosemite of the North," is deserved. And it's an amazing wrap to your week. Your captain joins you tonight for a Farewell Dinner. Celebrate and reminisce about your Alaskan journey with a "photo journal" by your crew. (BLD)

### DAY 15 Ketchikan, Alaska - Disembarkation

The Small Cruise Ship Collection  
[www.small-cruise-ships.com](http://www.small-cruise-ships.com)

01432 507 280 (within UK)

[info@small-cruise-ships.com](mailto:info@small-cruise-ships.com) | [small-cruise-ships.com](http://small-cruise-ships.com)



## The Small Cruise Ship Collection

[www.small-cruise-ships.com](http://www.small-cruise-ships.com)



[small-cruise-ships.com](http://small-cruise-ships.com)

[info@small-cruise-ships.com](mailto:info@small-cruise-ships.com)

After breakfast this morning, bid adieu to your new pals before you disembark and transfer to the Ketchikan airport or begin your extended UnCruise hotel stay or land tour. (B)

**Please Note:**

Passport required (non USA citizens). Itineraries are guidelines; variations in itinerary and the order of days may occur to maximize your experience.



The Small Cruise  
Ship Collection

[www.small-cruise-ships.com](http://www.small-cruise-ships.com)

**01432 507 280** (within UK)

[info@small-cruise-ships.com](mailto:info@small-cruise-ships.com) | [small-cruise-ships.com](http://small-cruise-ships.com)





The Small Cruise  
Ship Collection

[www.small-cruise-ships.com](http://www.small-cruise-ships.com)



[small-cruise-ships.com](http://small-cruise-ships.com)

[info@small-cruise-ships.com](mailto:info@small-cruise-ships.com)

## YOUR SHIP: WILDERNESS DISCOVERER

**YOUR SHIP:**

**Wilderness Discoverer**

**VESSEL TYPE:**

**LENGTH:**

**PASSENGER CAPACITY:**

**BUILT/REFURBISHED:**

The 76-guest Wilderness Discoverer gets rave reviews from her guests. Expedition is top-of-mind with this vessel; and adventure and discovery lay at its heart. The interior complements the outside and public and private spaces are loaded with amenities. Enjoy a main lounge that evokes the feel of a National Park Lodge or neighborhood pub and relax on deck or keep watch for wildlife. Three accessible decks are fully equipped for comfort and action. The sun deck has a sauna and fitness equipment; viewing is over-the-top from the bow and under-the-stars from two hot tubs on the observation deck; and the EZ Dock launch platform on the main deck makes getting in the water a cinch. Onboard are kayaks; stand-up paddle boards; inflatable skiffs; hiking poles; yoga mats; hydrophone for listening below-surface; and a bow-mounted underwater camera pipes the action to the lounge and to your cabin TV. The four cabin categories aboard the Wilderness Discoverer are: Navigator; Trailblazer; Pathfinder; and Explorer. Depending on your cabin, singles, doubles or triples can be accommodated. Common to all Wilderness Discoverer cabins are: Memory foam mattresses; Flat-screen TV/DVD; and iPod docking station. All staterooms come with a view window (no portholes).



The Small Cruise  
Ship Collection

[www.small-cruise-ships.com](http://www.small-cruise-ships.com)

**01432 507 280** (within UK)

[info@small-cruise-ships.com](mailto:info@small-cruise-ships.com) | [small-cruise-ships.com](http://small-cruise-ships.com)

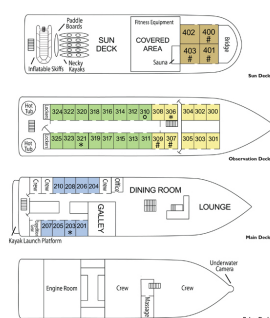
# The Small Cruise Ship Collection

www.small-cruise-ships.com

small-cruise-ships.com

info@small-cruise-ships.com

## INSIDE YOUR SHIP



All Cabins are Above Deck with View Windows

\* Double or Triple Accommodation \* Single or Double Accommodation \* Fixed Bath



### Explorer Cabin (EXPL)

10-121  
Single, queen, queen or twin beds, large picture window, private bath with shower



### Pathfinder Cabin (PATH)

10-122  
Double, queen, queen or twin beds, large picture window, private bath with shower



### Trailblazer Cabin (TRBL)

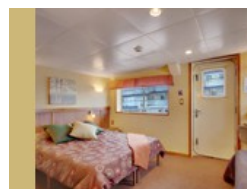
10-123  
Queen or twin beds, view window, private bath with shower



### Navigator Cabin (NAV)

10-124  
Queen or twin beds, view window, private bath with shower

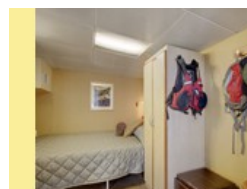
### Admiral Cabin



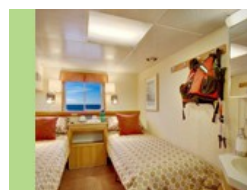
### Navigator Cabin



### Pathfinder Cabin



### Trailblazer Cabin



The Small Cruise Ship Collection

www.small-cruise-ships.com

01432 507 280 (within UK)

info@small-cruise-ships.com | small-cruise-ships.com





## The Small Cruise Ship Collection

[www.small-cruise-ships.com](http://www.small-cruise-ships.com)



[small-cruise-ships.com](http://small-cruise-ships.com)

[info@small-cruise-ships.com](mailto:info@small-cruise-ships.com)

## PRICING

07-Sep-2025 to 21-Sep-2025

Trailblazer Cabin	£6237 GBP pp
Admiral Cabin	£8162 GBP pp
Navigator Cabin	£5544 GBP pp
Pathfinder Cabin	£6699 GBP pp

### ADDITIONAL CHARGES:

Port Taxes & Fees 375 USD pp



The Small Cruise Ship Collection

[www.small-cruise-ships.com](http://www.small-cruise-ships.com)

01432 507 280 (within UK)

[info@small-cruise-ships.com](mailto:info@small-cruise-ships.com) | [small-cruise-ships.com](http://small-cruise-ships.com)