



The Small Cruise Ship Collection

www.small-cruise-ships.com

small-cruise-ships.com

info@small-cruise-ships.com

ACROSS THE GREAT AUSTRALIAN BIGHT SMALL SHIP CRUISE

This is Australia's southern coast, from rugged cliffs to charming seaside towns. Discover history, nature, and local flavours along Australia's most remote coastal stretch.



ITINERARY

Day 1: Depart Hobart | Nipuluna

Arrive in Hobart to board *_Coral Adventurer_* at 4pm. Settle into your stateroom, meet the crew and fellow guests, and enjoy Captain's Welcome Drinks as the ship departs at 5pm to begin your epic adventure across the Great Australian Bight.

Sea Day

Enjoy a relaxing day at sea as we follow the Tasmanian coast on our way to the township of Burnie. Attend onboard presentations from our team of Guest Lecturers. Use this time to unwind, get acquainted with fellow travellers and enjoy *_Coral Adventurer's_* facilities.

Burnie | Pataway, Tasmania

Welcome to the township of Pataway/Burnie; gateway to 60-million-year-old temperate rainforests and the much-loved platypus. Today, we hope to spot these elusive creatures in their

The Small Cruise Ship Collection

www.small-cruise-ships.com

01432 507 280 (within UK)

info@small-cruise-ships.com | small-cruise-ships.com



The Small Cruise Ship Collection

www.small-cruise-ships.com

small-cruise-ships.com

info@small-cruise-ships.com

natural habitat and take in the stunning Guide Falls. In the afternoon, savour in a unique 'farm to table' experience, featuring sustainably-farmed ingredients.

[King Island, Tasmania](#)

As we sail through the Bass Strait, we make our way to King Island, home to just 2,000 residents. This isolated region is famous for its cheese and dairy products. Guests will have the opportunity to enjoy a cheese tasting at Kind Island Dairy and wander through a calcified forest dating back over 7,000 years.

Please note: Landing on King Island is highly subject to weather and swell; it has been challenging mariners since the 1800s and continues to do so today. An alternative location will be selected if conditions are not favourable.

[Budj Bim | Port Fairy, Victoria](#)

Join your Gunditjmara guides on today's exclusive Signature Experience to discover the UNESCO-listed Budj Bim National Park. Learn how the indigenous engineering works have been used to sustainably farm kooyang (eel) over the last 6,600 years on a guided tour through the landscape. Later, taste kooyang creations as you listen to by Gunditjmara stories shared by local elders. Alternatively, enjoy free time to wander Port Fairy's the scenic riverside and historic Lifeboat Station.

Please note: the Budj Bim signature experience is an all-day event. Guests participating will not have time to explore Port Fairy if this option is selected. Guests will be asked to confirm their participation at time of booking.

[Robe, South Australia](#)

Today we arrive into Robe, the traditional lands of the Bunganditj peoples. Visit the Obelisk, a tall, four-sided monument, built in 1972 on the western edge of the township to replace the historic Cape Jaffa Lighthouse. Guests can also take the opportunity to visit Customs House for a self-guided tour.

[Kangaroo Island, South Australia](#)

Visit the spectacular Seal Bay, home to 5% of the nation's population of endangered Australian sea lions. Enjoy an exclusive tour with Sea Lion specialists to learn more about their biology, behaviors and conservation challenges. Later, explore American River's maritime heritage on guided walk with Expedition team. In your free time, you might like to visit some of the local cafes and producers selling tasty goods.

[Cape Donington, South Australia](#)

Cape Donnington takes its name from Matthew Flinders' home in Lincolnshire, UK - though there is very little similarity between the two beyond that. Discover tales of exploration on guided walks of coastal trails with your Expedition Team and Guest Lecturers. There are several walks and hikes possible according to guest ability - each with their own stunning scenery and native flora and fauna.

[Coffin Bay, South Australia](#)

Discover South Australia's famed oysters on a farm and tasting tour. Swim, snorkel, or kayak tranquil bays teeming with dolphins and seabirds. Stroll on the sandy beaches and dunes in Coffin Bay National Park then unwind with local wines onboard.

[Flinders Island, South Australia](#)

The Small Cruise Ship Collection

www.small-cruise-ships.com

01432 507 280 (within UK)

info@small-cruise-ships.com | small-cruise-ships.com



The Small Cruise Ship Collection

www.small-cruise-ships.com

small-cruise-ships.com

info@small-cruise-ships.com

Meet the Woolford family; third-generation abalone farmers and current caretakers of the island. Taste freshly harvested abalone, and learn about rewilding projects restoring island biodiversity. If time permits, enjoy a bracing swim in the waters of the Sothern Ocean or Xplorer-cruise this pristine island coast.

[Bunda Cliffs, Great Australian Bight](#)

Weather permitting, enjoy a breathtaking scenic cruise along the world's longest uninterrupted cliffs, where ancient limestone meets the vast Southern Ocean and seabirds soar above.

[Sea Day](#)

Spend the day relaxing on board as we sail towards Lucky Bay. Take the opportunity to reflect on the journey so far, and enjoy to hospitality on board.

[Lucky Bay, Western Australia](#)

Walk the famous white-sand beaches, caused by high silica content. We often spot kangaroos on the beach here, a true postcard moment. Join a guided hike on the trail to Thistle Cove with the Expedition team, or swim and kayak the blue waters, or Xplorer-cruise sheltered bays to spot local birds and wildlife.

[Woody Island, Western Australia](#)

Snorkel the clear temperate waters of the Woody Island Snorkel Trail. Join guided walks to the island summit or Skinny Dip Bay, spotting a diverse array of birdlife and an abundance of lizards and skinks along the way.

[Albany | Kinjarling, Western Australia](#)

Explore the National ANZAC Centre and discover its role as the launch point for the first convoy of allied forces to Europe. 2026 also marks the bicentennial of Albany; enjoy your free time to

explore various exhibitions and events around the township. If conditions permit, we may also cruise Breaksea Island for bird and seal sightings.

[Augusta | Talinup, Western Australia](#)

Tour Jewel Cave's ancient formations, view the Leeuwin Lighthouse where two oceans meet, and sample wines aged in Australia's only underwater winery paired with local seafood.

[Busselton | Undalup, Western Australia](#)

Stroll Busselton's 1.8 km timber jetty or visit the Underwater Observatory. Join a guided Old Gaol tour revealing stories of colonial justice, or explore heritage buildings, cafes and boutiques.

[Rottneest Island | Wadjemup, Western Australia](#)

Swim, snorkel or kayak calm lagoons, meet friendly quokkas, and walk the Wadjemup Bidi trail network. Enjoy Captain's Farewell Drinks overlooking the island's turquoise bays.

[Day 19 Arrive: Fremantle](#)

Disembark at Berth C Fremantle at 8:00am. Farewell your crew after a memorable voyage across the Great Australian Bight.

[Please note:](#)

Itineraries are subject to change.

The Small Cruise Ship Collection

www.small-cruise-ships.com

01432 507 280 (within UK)

info@small-cruise-ships.com | small-cruise-ships.com



The Small Cruise Ship Collection

www.small-cruise-ships.com

small-cruise-ships.com

info@small-cruise-ships.com

YOUR SHIP: CORAL ADVENTURER

YOUR SHIP: Coral Adventurer

VESSEL TYPE:

LENGTH:

PASSENGER CAPACITY:

BUILT/REFURBISHED:

Launched in 2018 with her maiden voyage in 2019, Coral Adventurer has been designed and built to take you closer to unspoilt vistas in comfort, style and safety. A culmination of two years of design and three decades of passion for expedition cruising. BIGGER IS NOT BETTER At a time when cruise ships get larger and glitzier, we remain stubbornly compact and intimate. Our ships are designed to take you to unspoilt destinations not accessible to large ships. We want you to have the luxury of space, dine with whom you please, or find your quiet corner on deck. So Coral Adventurer has just 60 spacious cabins. This preserves the intimate atmosphere we are known for without sacrificing the stability and comfort of a true ocean going vessel. BUILT FOR DISCOVERY The Coral Adventurer features the trademark dual 'Xplorer' tenders cradled on a hydraulic platform slung off the back of the ship, enabling our guests to go ashore in comfort and ease. The shallow draft of the ship enables us to go closer to shore than larger ships. Together with a renowned expedition team, this new ship will offer the most advanced expedition capabilities of any small ship afloat. BUILT FOR COMFORT With active stabilisers dampening sea motion, mostly balcony cabins, and interiors designed with the colours and

textures of tropical Queensland, the Coral Adventurer is a comfortable ship. She features promenade decks, generous communal areas that accommodate all guests, a passenger elevator, and an open kitchen where you can observe our chefs whip up small batch cuisine from locally sourced ingredients. BUILT FOR PERSONAL SERVICE The Coral Adventurer will continue a proud tradition of Australian flagged vessels with friendly and professional Australian crew. The onboard atmosphere remains refreshingly informal and intimate. Take your seat at our bridge lounge, chat with the captain at your leisure or accompany our chefs on a market tour. Food and wine features Single seating dining area with communal 'wine table' finished with Australian stone; serving buffet breakfast and lunch, and multi-course table d'hote dinners Showcase galley visible to guests for fresh small-batch cuisine featuring Australian produce Multiple indoor and outdoor bars, including the Explorer bar on the sundeck for sunset drinks with 180 degree views Curated wine cellar featuring modestly priced boutique wines for daily drinking and exceptional vintage Australian reds. Guest comfort All outside guest cabins with en-suite bathrooms; majority have private balcony Active stabilisers to dampen sea motion Gym equipped with elliptical trainers and treadmills Passenger elevator Wi-Fi available in all

The Small Cruise Ship Collection
www.small-cruise-ships.com

01432 507 280 (within UK)

info@small-cruise-ships.com | small-cruise-ships.com



guest areas

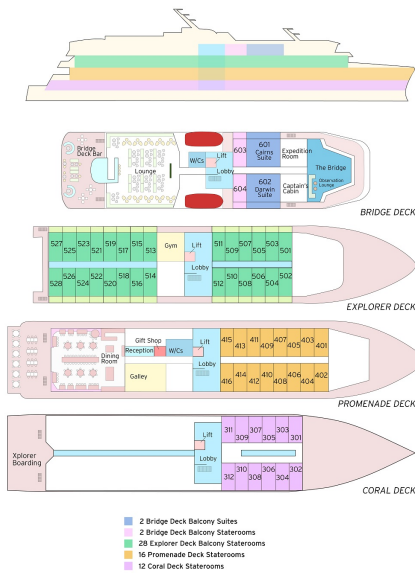
The Small Cruise Ship Collection

www.small-cruise-ships.com

small-cruise-ships.com

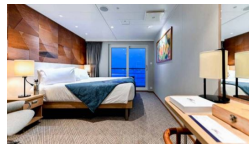
info@small-cruise-ships.com

INSIDE YOUR SHIP



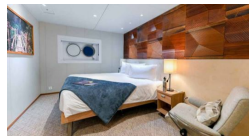
BRIDGE DECK BALCONY STATEROOM

BRIDGE DECK BALCONY SUITE

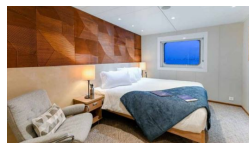


CORAL DECK STATEROOM

EXPLORER DECK BALCONY STATEROOM



PROMENADE DECK STATEROOM





The Small Cruise Ship Collection

www.small-cruise-ships.com

small-cruise-ships.com

info@small-cruise-ships.com

PRICING

18-Feb-2027 to 08-Mar-2027

EXPLORER DECK BALCONY STATEROOM	£10645 GBP pp
BRIDGE DECK BALCONY SUITE	£14965 GBP pp
CORAL DECK STATEROOM	£6655 GBP pp
BRIDGE DECK BALCONY STATEROOM	£11635 GBP pp
PROMENADE DECK STATEROOM	£7985 GBP pp