

The Small Cruise Ship Collection

www.small-cruise-ships.com

small-cruise-ships.com

info@small-cruise-ships.com

ABROLHOS ISLANDS & THE CORAL COAST ABOARD CORAL ADVENTURER

This expedition explores Western Australia's wild and largely untouched coast, with its contrasting coastal palette of rich red sands and turquoise sea. With a fascinating maritime and Indigenous history – from the Malgana people of Shark Bay to the exploratory journeys of William Dampier, Dirk Hartog, Baudin and Freycinet – this region is layered with stories. The natural coastal reserves harbour an abundance of bird life and fascinating marine species. Our guides will help guests explore the renowned Houtman Abrolhos Islands, Shark Bay World Heritage Area, Ningaloo Reef, Cape Range National Park, Montebello Islands, Muiron Islands and Dampier Archipelago. Onboard this voyage will be expert Guest Lecturer Howard Gray. Howard's passion and knowledge about the Houtman Abrolhos Islands and the amazing story of the discoverer Frederik de Houtman has brought to light much of the fascinating history of this region and been received enthusiastically by the community, including the local Wilunyu/Amangu people. His publication won the Royal West Australian Historical Society Williams/Lee Steere Prize for 'the best book on the history of Western Australia for 2019'.



ITINERARY

DEPART FREMANTLE

Board at 8.00am at Victoria Quay at Fremantle Inner Harbour. There is time to settle into your stateroom before our 9:00am departure. Take the time to become acquainted with all the facilities onboard as we cruise northwards towards the Abrolhos. As dusk falls meet your fellow travellers, the Captain and crew for the Captain's Welcome Drinks.

THE ABROLHOS ISLANDS

The Small Cruise Ship Collection
www.small-cruise-ships.com

01432 507 280 (within UK)

info@small-cruise-ships.com | small-cruise-ships.com



The Small Cruise Ship Collection

www.small-cruise-ships.com

small-cruise-ships.com

info@small-cruise-ships.com

The Abrolhos Islands consist of 122 islands, clustered into three main groups, the Wallabi, Easter and Pelsaert Groups. Lying in the steam of the southward flowing Leeuwin current, the marine environment here is a meeting place for tropical and temperate sea life. Common marine mammals include Australian sea lions and bottlenose dolphins, and over 90 species of seabird have been identified. The treacherous reefs around these islands have claimed many wrecks over the centuries, the most famous being the Batavia in 1629 – whose Dutch crew swam ashore only to experience a brutal mutiny. The Abrolhos islands offer a near-pristine natural environment with a diverse range of marine and terrestrial fauna and flora. This area also offers a rich history including shipwrecks and remnants of early colonial industries such as guano mining and commercial fishing. A broad range of available activities includes visiting historical sites, fishing, wildlife viewing and world-class diving and snorkelling sites. The Australian sea lions love to swim and play with snorkelers and divers here. We visit Liddon Pearls on Post Office Island in the Pelsaert (Southern) group of the Abrolhos. Here we learn what is involved with growing the pearls, learning the different shells and pearl categories, and how the different types of pearls are set. We will also have insights into the renowned cray fishing industry of the island, from the family who has been in the Abrolhos for 4 generations. Later is the opportunity to snorkel the blue holes from the jetty, or even the reef where our local guides will take us to the best spots for coral, fish, dolphins, squid, seals and other marine wildlife.

SHARK BAY WORLD HERITAGE AREA

Spend two days exploring the Shark Bay World Heritage Area, the first location in Western Australia to receive UNESCO World Heritage status in 1991. This is a region of colourful landscapes,

rare flora and fauna, and home to a staggering 35% of all of Australia's bird species. Explore Francois Peron National Park, named after the naturalist on explorer Nicholas Baudin's expeditions. We visit Dampier's Landing, where William Dampier came ashore in August 1699, describing the vegetation and making the first scientific collection of Australian plants. He also named Shark Bay, and 300 years later, a plaque was erected at this site in his honour. In the afternoon we will snorkel at Louisa Bay coral communities about 200m from shore. Cabbage corals dominate this area, but there are also staghorns and massive pocillopora and pink pocillopora species. Spot reef fish including coral trout, blue-lined emperor, scribbled angelfish and the fully protected potato cod. Off Sandy Point beach there is a Marine sanctuary zone, which protects a diversity of staghorn, brain and plate corals.

EXMOUTH & CAPE RANGE NATIONAL PARK (NINGALOO REEF)

One of the longest and most pristine fringing reefs in the world, Ningaloo Reef has an unusually narrow continental shelf. The deep oceanic waters, reef and coastline communities are close in proximity, resulting in a huge array of significant and healthy marine life coexisting in one area. Over 200 coral; 500 fish; 650 molluscs; 600 crustaceans; 1000 marine algae; 155 sponge and 25 echinoderm species are found on this shelf, slope and in deep-sea habitats, many of which are new discoveries and endemic to the area. The Ningaloo Coast is also one of the most important turtle nesting rookeries in the Indian Ocean. The Ningaloo Coast also has a significant maritime history from explorers, traders, pearl luggers, whaling and fishing. Spend the day at Cape Range National Park with options to snorkel at Turquoise Bay, visit Yardie Creek via a 1.2km Nature Walk, head up to the Vlamingh Head lighthouse or visit the Milyerling

The Small Cruise Ship Collection
www.small-cruise-ships.com

01432 507 280 (within UK)

info@small-cruise-ships.com | small-cruise-ships.com



The Small Cruise Ship Collection

www.small-cruise-ships.com

small-cruise-ships.com

info@small-cruise-ships.com

Discovery Centre. There will also be some free time to explore Exmouth.

MUIRON ISLANDS (NINGALOO REEF)

The Muiron Islands are located approximately 10 nautical miles off the North West Cape. The Islands are well known for their incredible reef, colourful soft corals, an abundance of turtles, schools of fish and even sightings of manta rays! A variety of dive sites are on offer at this destination, including swim-throughs and ledges where nudibranchs, eels and angelfish hide. With fantastic bommies and protected reef, snorkellers will appreciate the variety of soft corals and gorgonians as well the incredible fish life. Birdlife is abundant onshore – see if you can spot wedge-tail shearwaters, roseate terns, osprey, and black-shouldered kites (just to name a few). The World Heritage listed Ningaloo Reef is the turquoise jewel in the crown of the Western Australian coastline. Spanning over 5,000 square kilometres, this is one of the largest fringing reefs in the world. It's inner and outer reefs create a diverse range of habitats for vibrant corals and more than 500 species of fish. This is also where mega marine life come to feed during their migrations, including humpback whales, giant manta rays, and the majestic whale shark. It is also a coastline with a fascinating heritage, where lonely whalers battled it out against the elements. After in-water activities, stretch your legs on a stroll down the beach on these untouched islands.

MONTEBELLO ISLANDS

The Montebello Islands or 'Montes' are an archipelago of more than 250 limestone islands and islets off the coast of the Pilbara. Much delight for the birdwatchers among us, the islands are considered an Important Bird Area, as they support over 1% of the world populations of fairy and roseate terns, as well as

Sooty Oystercatchers. The Montes have an 'explosive' past. Alpha and Trimouille Islands were the site of three British atomic weapons tests in the 1950s. Relics of the military operation can still be found on the islands today. We will visit the plinth, which marks Ground Zero at Trimouille Island, where now you will find a haven for wildlife, including the rufous hare wallaby. A fascinating maritime history surrounds the Montebello Island. Survivors of the Dutch vessel Trial swam here after their ship was wrecked in 1622, therefore being the first Europeans to land on the islands. We will spend a full day exploring this island group, including wildlife spotting opportunities and beautiful beaches to enjoy a swim. See the rare rufous hare wallaby and lagoon rays while exploring amazing vistas.

DAMPIER ARCHIPELAGO

Consisting of 42 islands and islets, 25 of which are nature reserves, the iron red islands of the Dampier Archipelago stand in bright contrast to the turquoise waters which surround them. The archipelago not only offers exceptional natural beauty but significant sites for Aboriginal and European Heritage, many of which are in National Heritage Listed Areas. Named for English Explorer William Dampier who first visited the islands aboard the Cygnet in 1699, the islands' earliest inhabitants were the Yaburara people, as is evident by thousands of rock engravings, shell middens and stone arrangements scattered across the area. Search for ancient aboriginal petroglyphs on remote island beaches, swim in the vibrant blue water or paddle out for a leisurely kayak. We will also take some time to enjoy bird and wildlife spotting – bottlenose dolphins are regularly seen in this area, alongside the archipelago supporting the largest hawksbill turtle rookery in the Indo-Pacific region. Birdwatchers will have the opportunity to see several species of migratory waders as

The Small Cruise Ship Collection
www.small-cruise-ships.com

01432 507 280 (within UK)

info@small-cruise-ships.com | small-cruise-ships.com



The Small Cruise Ship Collection

www.small-cruise-ships.com

small-cruise-ships.com

info@small-cruise-ships.com

well as sea eagles and ospreys. With some luck we may even see the elusive Rothschild's rock wallaby.

ARRIVE BROOME

Arrive in Broome for an 8:00am disembarkation.

Please Note:

Itineraries are subject to change.



The Small Cruise Ship Collection

www.small-cruise-ships.com

small-cruise-ships.com

info@small-cruise-ships.com

YOUR SHIP: CORAL ADVENTURER

YOUR SHIP: Coral Adventurer

VESSEL TYPE:

LENGTH:

PASSENGER CAPACITY:

BUILT/REFURBISHED:

Launched in 2018 with her maiden voyage in 2019, Coral Adventurer has been designed and built to take you closer to unspoilt vistas in comfort, style and safety. A culmination of two years of design and three decades of passion for expedition cruising. BIGGER IS NOT BETTER At a time when cruise ships get larger and glitzier, we remain stubbornly compact and intimate. Our ships are designed to take you to unspoilt destinations not accessible to large ships. We want you to have the luxury of space, dine with whom you please, or find your quiet corner on deck. So Coral Adventurer has just 60 spacious cabins. This preserves the intimate atmosphere we are known for without sacrificing the stability and comfort of a true ocean going vessel. BUILT FOR DISCOVERY The Coral Adventurer features the trademark dual 'Xplorer' tenders cradled on a hydraulic platform slung off the back of the ship, enabling our guests to go ashore in comfort and ease. The shallow draft of the ship enables us to go closer to shore than larger ships. Together with a renowned expedition team, this new ship will offer the most advanced expedition capabilities of any small ship afloat. BUILT FOR COMFORT With active stabilisers dampening sea motion, mostly balcony cabins, and interiors designed with the colours and

textures of tropical Queensland, the Coral Adventurer is a comfortable ship. She features promenade decks, generous communal areas that accommodate all guests, a passenger elevator, and an open kitchen where you can observe our chefs whip up small batch cuisine from locally sourced ingredients. BUILT FOR PERSONAL SERVICE The Coral Adventurer will continue a proud tradition of Australian flagged vessels with friendly and professional Australian crew. The onboard atmosphere remains refreshingly informal and intimate. Take your seat at our bridge lounge, chat with the captain at your leisure or accompany our chefs on a market tour. Food and wine features Single seating dining area with communal 'wine table' finished with Australian stone; serving buffet breakfast and lunch, and multi-course table d'hote dinners Showcase galley visible to guests for fresh small-batch cuisine featuring Australian produce Multiple indoor and outdoor bars, including the Explorer bar on the sundeck for sunset drinks with 180 degree views Curated wine cellar featuring modestly priced boutique wines for daily drinking and exceptional vintage Australian reds. Guest comfort All outside guest cabins with en-suite bathrooms; majority have private balcony Active stabilisers to dampen sea motion Gym equipped with elliptical trainers and treadmills Passenger elevator Wi-Fi available in all



guest areas

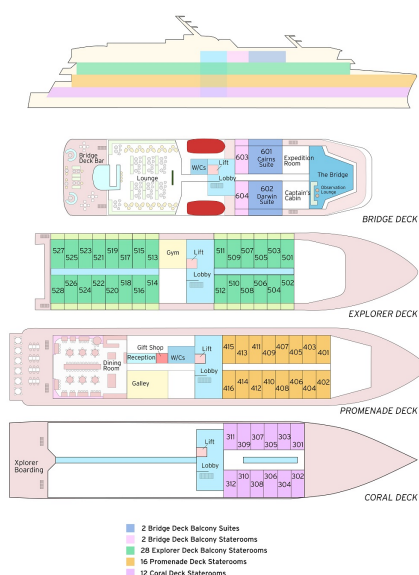
The Small Cruise Ship Collection

www.small-cruise-ships.com

small-cruise-ships.com

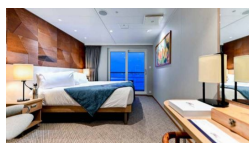
info@small-cruise-ships.com

INSIDE YOUR SHIP



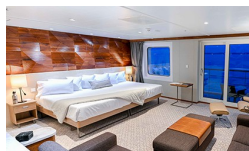
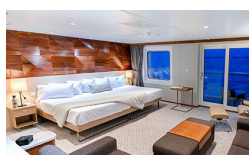
BRIDGE DECK BALCONY STATEROOM

BRIDGE DECK BALCONY SUITE



Bridge Deck Balcony Suite

Bridge Deck Balcony Suite■



CORAL DECK STATEROOM

Coral Deck■Stateroom

Coral Deck Stateroom

EXPLORER DECK BALCONY STATE

Explorer Deck Balcony Stateroom

PROMENADE DECK STATEROOM

The Small Cruise Ship Collection

www.small-cruise-ships.com

small-cruise-ships.com

info@small-cruise-ships.com

PRICING

07-Oct-2025 to 19-Oct-2025

Bridge Deck Balcony Suite	£11725 GBP pp
Promenade Deck Stateroom	£6548 GBP pp
Coral Deck Stateroom	£5457 GBP pp
Explorer Deck Balcony Stateroom	£8736 GBP pp

01-Oct-2026 to 13-Oct-2026

Promenade Deck Stateroom	£8309 GBP pp
Bridge Deck Balcony Suite	£14275 GBP pp
Explorer Deck Balcony Stateroom	£11215 GBP pp
Coral Deck Stateroom	£6885 GBP pp

29-Mar-2026 to 10-Apr-2026

Coral Deck Stateroom	£6579 GBP pp
Promenade Deck Stateroom	£7895 GBP pp
Bridge Deck Balcony Suite	£14169 GBP pp
Explorer Deck Balcony Stateroom	£10529 GBP pp

05-Nov-2026 to 17-Nov-2026

Bridge Deck Balcony Suite	£14275 GBP pp
Explorer Deck Balcony Stateroom	£11215 GBP pp
Coral Deck Stateroom	£6885 GBP pp
Promenade Deck Stateroom	£8309 GBP pp

11-Apr-2026 to 23-Apr-2026

Explorer Deck Balcony Stateroom	£10529 GBP pp
Promenade Deck Stateroom	£7895 GBP pp
Bridge Deck Balcony Suite	£14169 GBP pp
Coral Deck Stateroom	£6579 GBP pp

12-Feb-2027 to 24-Feb-2027

Explorer Deck Balcony Stateroom	£11215 GBP pp
Coral Deck Stateroom	£6885 GBP pp
Promenade Deck Stateroom	£8309 GBP pp
Bridge Deck Balcony Suite	£14275 GBP pp

16-Sep-2026 to 28-Sep-2026

EXPLORER DECK BALCONY STATEROOM	£11215 GBP pp
BRIDGE DECK BALCONY STATEROOM	£11829 GBP pp
BRIDGE DECK BALCONY SUITE	£14785 GBP pp
CORAL DECK STATEROOM	£6885 GBP pp
PROMENADE DECK STATEROOM	£8309 GBP pp

27-Feb-2027 to 11-Mar-2027

Explorer Deck Balcony Stateroom	£11215 GBP pp
Promenade Deck Stateroom	£8309 GBP pp
Bridge Deck Balcony Suite	£14275 GBP pp
Coral Deck Stateroom	£6885 GBP pp