



A WORLD AFFAIRS VOYAGE FROM COPENHAGEN TO LONDON

This cruise is part of a collection of PONANT themed voyages that are specially-tailored for English-speaking travelers who want to engage with the world. In addition to the usual elements of the PONANT experience, the listed price for these voyages includes transfers to and from the ship, talks and discussions aboard ship by world class experts, and a shore excursion or activity in each port of call that encourages guests to embrace the sights, sounds, tastes, and smells of the local environment and culture. The northwest corner of Europe--the part of the continent where the Baltic and North Seas meet--is rich in history, both medieval and modern, and an ideal destination for reflection on what earlier experiences of war and peace can teach us about dealing with current issues of international security. Joining you on this voyage from Copenhagen to London, are two distinguished experts on these issues, including former NATO Supreme Allied Commander, Admiral James Stavridis. They will share insights into such topics as concerns about the unity of the NATO alliance and the hopeful signs of continued commitment to cooperation in pursuit of the goals of freedom and democracy. From Copenhagen, _Le Champlain_ sails south to the northern coast of Germany, where you spend the first two days of your voyage in the Baltic seaports of Warnemünde and Wismar. This is the heart of the area once dominated by the Hanseatic League, and you may tour a number of towns--Lübeck, Rostock, and Wismar itself--whose well-preserved Old Towns (two of which are UNESCO World Heritage sites) speak to the wealth produced by the League's monopoly of trade. The third day of cruising is spent navigating the 61-mile-long Kiel Canal, which cuts across the Jutland

Peninsula and connects the Baltic Sea to the North Sea. Two hundred and fifty nautical miles are saved by using the canal instead of sailing around the peninsula. Harlingen is your first port of call in the country of The Netherlands, 25% of which has been reclaimed from the sea via terps, dikes, windmills, and lake-draining. One of the most ambitious of these reclamation projects is the Woudagemaal steam-powered pumping station--built in the 1920s, now a UNESCO World Heritage site, and still in operation. Here you will learn about an early version of water management technology that will become increasingly important as sea levels around the world rise. As the official capital of The Netherlands, Amsterdam is home to a Royal Palace that hosts state visits and official receptions. A guided visit to the Palace will focus on its role in international politics and cultural exchange, but you will also be drawn to the elegance of its architecture and to artworks that recall the splendor of the Dutch Golden Age. A second possibility for your time in Amsterdam is a tour of the Dutch Resistance Museum, chronicling the hard work and heroism of the Dutch struggle against totalitarian rule during World War II. Alternatively, choose to enjoy a cruise through Amsterdam's famous canals, or visit the world renowned Van Gogh Museum or Rijksmuseum. The Hague, which is home to the Dutch Parliament and the residence of the royal family, is also home to the International Court of Justice, housed within the Peace Palace, which you may explore on a guided tour. Or you may travel to nearby Rotterdam Harbor to see a floating dairy farm, that is both a demonstration of the practicability of sustainable farming in an intensely urban environment and a vision of the future. A third

The Small Cruise Ship Collection

www.small-cruise-ships.com

small-cruise-ships.com

info@small-cruise-ships.com

option for the day is to visit the 18th-century windmills at Kinderdijk, a UNESCO World Heritage site and another example of Dutch mastery of the art and science of water management. Antwerp is your gateway to Brussels and to a choice of tours of two institutions crucial to and depicting the history of the security of Europe and of the broader Atlantic world. A visit to the European Parliament, the legislative branch of the European Union, will introduce you to its work seeking to advance the common interests of its 27 member countries. Or you may prefer a guided tour through the Royal Museum of the Armed Forces and Military History, a collection spanning more than 10 centuries of military and technological history. Alternatively, stay in Antwerp and explore the city's historic Diamond District. From the Belgian port of Ostend, enjoy a walking tour of the exquisitely preserved medieval town of Bruges. Two other possible excursions focus on sustainability--one on the promise of wind power at the North Sea Offshore experience; the other a visit to Agrotopia, a state-of-the-art urban farm in the town of Roeselare. Alternatively, you may travel to nearby Ravensyde, home to the remnants of the Atlantic Wall, a massive network of bunkers and tunnels built by the Germans and used in both World Wars. Dunkirk offers a choice of museums with displays on various aspects of the city's World War II history. The Dunkirk Museum focuses on Operation Dynamo, the evacuation of Allied Troops in 1940, while the Blockhaus d' Éperlecques and La Coupole tell the story of German military installations during the Occupation. On the final day of the voyage, Le Champlain sails from Dunkirk at midday, across the English Channel and up the Thames River, reaching London Bridge late in the evening, where the ship remains docked overnight before disembarkation in London



the next day.

ITINERARY

Day 1 - Copenhagen

Connected to the far eastern side of Sealand island, a few kilometres away from the Swedish coasts, Copenhagen offers you the high colour of Scandinavian capitals. You can discover the city's riches that weaves through the canal networks through the historical districts of Christiansborg and Nyhavn. Many palaces provide an aperçu of Danish history. For eating, you can try out the smørrebrød, traditional danish sandwiches made with ham, cheese or smoked fish.

Day 2 - At sea

During your journey at sea, make the most of the many services and activities on board. Treat yourself to a moment of relaxation in the spa or stay in shape in the fitness centre. Depending on

The Small Cruise Ship Collection
www.small-cruise-ships.com

01432 507 280 (within UK)

info@small-cruise-ships.com | small-cruise-ships.com



The Small Cruise Ship Collection

www.small-cruise-ships.com

small-cruise-ships.com

info@small-cruise-ships.com

the season, let yourself be tempted by the swimming pool or a spot of sunbathing. This journey without a port of call will also be an opportunity to enjoy the conferences or shows proposed on board, depending on the activities offered, or to do some shopping in the boutique or to meet the PONANT photographers in their dedicated space. As for lovers of the open sea, they will be able to visit the ship's upper deck to admire the spectacle of the waves and perhaps be lucky enough to observe marine species. A truly enchanted interlude, combining comfort, rest and entertainment.

Day 2 - Warnemünde

Located at the estuary of the Warnow river, Warnemünde is a highly popular German seaside resort on the Baltic Sea. This 12th-century fishing village became a port of crucial importance to the economy of the Hanseatic City of Rostock in the 14th century. Today, the old fishermen's houses have become shops and cafes, and beautiful mansions line the promenade. You will also be able to discover Rostock, where the city-centre architecture and the ramparts, built of bricks from Brandenburg, are a reminder of the city's position in the Hanseatic League. Succumb to the charms of the merchant houses around New Market Square or of Saint Mary's Church and its astronomical clock.

Day 3 - Wismar

Day 4 - Crossing the Kiel Canal

Spanning around one hundred kilometres, the Kiel Canal links the North Sea to the Baltic Sea, crossing the Jutland peninsula. It is the world's busiest artificial waterway.

Day 5 - Harlingen

Lying at the mouth of the Harinxma canal in the Frise province of the Netherlands, Harlingen has always had a very close relationship with the sea. Once a whale fishing centre and today a port specialised in shrimp fishing, its dynamism has transformed it into a modern city which also offers travellers museums and sites of interest. The local museum, the Hannemahuis, is housed in an 18th Century dwelling and presents a collection of regional furniture and objects retracing the history of the city. The lighthouse and the city hall with their typically Dutch architecture also deserve a visit.

Day 6 - Amsterdam

Amsterdam is above all a city of water. Omnipresent, it guides the traveller's steps, from street to street, from canal to canal, its bridges seeming to bend their arches to form allegiances with him. Let yourself fall in love with the grace and romanticism that emanate from this charming scene. Known around the world for its museums and the finest collection of the Dutch and Flemish masters of the golden age, this city is home to many other treasures. Take a stroll through the old district or pay a visit to a diamond house - do not miss this "treasure chest" of the Netherlands.

Day 7 - Scheveningen, The Hague

Scheveningen, a former small fishing village, is the seaside resort of La Hague, which is the seat of the government of the Netherlands and official residence of its king, and also called the "legal capital of the world". Only a 20-minute tram ride from the city centre, Scheveningen has a holiday feel, with its long fine sandy beach, its kitesurf boards and its windsurf boards. On the promenade that runs along the sea, you will admire the Grand Hotel Amrath Kurhaus, a jewel from the baroque era, as well as the De Pier, a 382-metre (1,250-foot) long pier -- one of



The Small Cruise Ship Collection

www.small-cruise-ships.com



small-cruise-ships.com

info@small-cruise-ships.com

the longest in the world -- as well as many trendy restaurants.

Day 8 - Antwerp

Located in the Flemish region of Belgium, Antwerp is worth a visit for its remarkable architectural heritage. In this moderately-sized, cosmopolitan city, you will be able to stroll around the ancient city centre, dominated by the most important monument in Antwerp, the Notre-Dame Cathedral, a UNESCO World Heritage site. The museums of the city retrace the history of Antwerp, including the home of Rubens, containing the works of the painter, and the Plantin-Moretus museum, a print works and publishing house that are UNESCO listed. From Grote Markt, the central square in the city, you will be captivated by the attractive sight formed by the unusual medieval architecture of the guild houses.

Day 9 - Ostend

Located on the Flemish coastline, half way between France and the Netherlands, the elegant city of Ostend is a favourite summer destination for Belgians. You can enjoy the "queen of beaches", a stretch of fine white sand punctuated by breakwaters, covered by the North Sea at high tide. The seafront boasts sumptuous facades from the Belle Epoque, such as Villa Maritza, which stands witness to this seaside town's rich past. Art amateurs will enjoy the excellent Kunstmuseum aan Zee, where a retrospective of Belgian art dating from 1830 is on display.

Day 10 - Dunkerque

Day 11 - London

The main residence of the British monarch, financial hub and seat of British government, London is the economic and cultural

heart of the country. A city of contrasts, attached to its traditions while buzzing with modernity, the capital of the United Kingdom has countless historic districts and notable sites to explore. From Hyde Park to the City through Westminster and Trafalgar Square, get ready to take on London's frenetic tempo. In between a visit to the National Gallery, a stroll through Covent Garden and a trip to Tower Bridge, you can take a quiet breather in one of London's many beautiful parks and gardens.

Please Note:

Itineraries are subject to change.



The Small Cruise Ship Collection

www.small-cruise-ships.com

01432 507 280 (within UK)

info@small-cruise-ships.com | small-cruise-ships.com



The Small Cruise Ship Collection

www.small-cruise-ships.com



small-cruise-ships.com

info@small-cruise-ships.com

YOUR SHIP: LE CHAMPLAIN

YOUR SHIP: Le Champlain

VESSEL TYPE:

LENGTH:

PASSENGER CAPACITY:

BUILT/REFURBISHED:

Featuring innovative and environmentally-friendly equipment, elegantly designed cabins, spacious suites with large windows, and lounge areas that open onto the outside, this new limited-capacity yacht boasting just 92 cabins and suites will offer you a truly unique cruising experience. As the first ship in a new series, Le Champlain will embody the unique atmosphere that is the cruise line's hallmark: a subtle blend of refinement, intimacy and comfort. Aboard this ship that flies the French flag, you will experience the incomparable pleasure of an intimate cruise, with the possibility of exploring an ever-increasing range of destinations in an ethnic-chic ambiance with luxury service. Experience a luxurious setting where the accent is on authenticity and passion for travel. **RESTAURANTS** As it is an essential part of French culture, gastronomy will naturally have pride of place aboard this new ship. Through its two restaurants, Le Champlain will invite you on a journey to elegance and epicureanism. In a relaxed atmosphere, a first dining area located on Deck 3 and able to seat 70 will serve grilled meats daily, along with a variety of salads and desserts. To the back of Deck 4, you will find a 260 m² panoramic restaurant which can accommodate all of our passengers in a single sitting. Designed

differently to that on our other ships, this dining area, which opens onto the outside, will have a buffet of salads, desserts and cheeses at your disposal. Our discreet and attentive crew will provide table service for hot meals. **PUBLIC AREAS** Like Le Boreal and its sisterships, Le Champlain has many common areas that are designed and equipped to meet all of your needs while preserving the intimacy of each passenger. A 140 m² reception area includes: A reception/concierge desk, An excursions desk, The ship's administrative services, The sales office, manned by our Guest Relations Officer, Our 50 m² boutique which sells clothing, jewellery, beauty products, postcards and various accessories, Toilets accessible to passengers with reduced mobility. A new hydraulic platform with adjustable height provides: Easier boarding than on any other cruise ship, Easier Zodiac embarkation and disembarkation for expeditions, Easier access to the sea for swimming and practising various water sports such as kayaking or paddle-boarding. A pool deck offering: A pool with a panoramic view, equipped with a counter-current swimming system, A pleasant solarium, An outdoor bar and lounge with armchairs and sofas. A 200 m² main lounge which can accommodate all of our passengers to share convivial moments and to host activities organised during the day or evening. Lastly, a theatre that seats 188, equipped with: The latest sound and lighting technology, A LED wall as the stage backdrop, for the projection of high-resolution images and videos. Please click the following links to read more about Ponant and the other Ponant



The Small Cruise Ship Collection

www.small-cruise-ships.com

01432 507 280 (within UK)

info@small-cruise-ships.com | small-cruise-ships.com



The Small Cruise Ship Collection

www.small-cruise-ships.com



small-cruise-ships.com

info@small-cruise-ships.com



cruise ships.



The Small Cruise Ship Collection

www.small-cruise-ships.com

01432 507 280 (within UK)

info@small-cruise-ships.com | small-cruise-ships.com



The Small Cruise Ship Collection

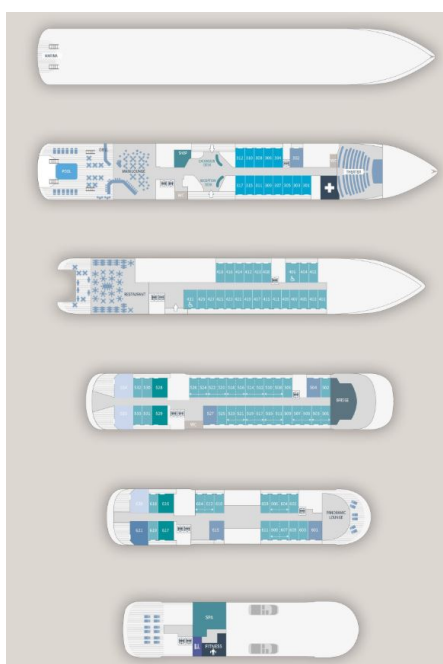
www.small-cruise-ships.com



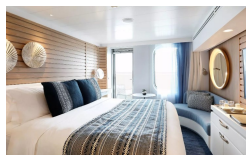
small-cruise-ships.com

info@small-cruise-ships.com

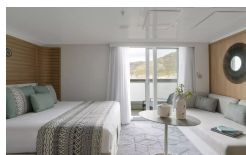
INSIDE YOUR SHIP



Deluxe Stateroom

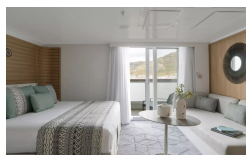


Deluxe Suite Deck 3



Deluxe Suite Deck 4

Deluxe Suite Deck 5



Deluxe Suite Deck 6

Grand Deluxe Suite Deck 6

Prestige Deck 5

Prestige Deck 6

Privilege Suite Deck 5

Grand Deluxe Suite Deck 5

Prestige Deck 4

Prestige Deck 5 Suite

Prestige Deck 6 Suite

Privilege Suite Deck 6



The Small Cruise Ship Collection

www.small-cruise-ships.com

01432 507 280 (within UK)

info@small-cruise-ships.com | small-cruise-ships.com



The Small Cruise Ship Collection

www.small-cruise-ships.com



small-cruise-ships.com

info@small-cruise-ships.com

PRICING

26-Aug-2026 to 05-Sep-2026

Deluxe Suite Deck 6	£10789 GBP pp
Deluxe Suite Deck 4	£10789 GBP pp
Deluxe Suite Deck 3	£10789 GBP pp
Prestige Deck 5 Suite	£14469 GBP pp
Grand Deluxe Suite Deck 5	£17475 GBP pp
Prestige Deck 6	£7845 GBP pp
Deluxe Stateroom	£6439 GBP pp
Privilege Suite Deck 6	£15939 GBP pp
Privilege Suite Deck 5	£15939 GBP pp
Prestige Deck 4	£7109 GBP pp
Prestige Deck 6 Suite	£15205 GBP pp
Prestige Deck 5	£7445 GBP pp
Grand Deluxe Suite Deck 6	£17475 GBP pp
Deluxe Suite Deck 5	£10789 GBP pp



The Small Cruise Ship Collection

www.small-cruise-ships.com

01432 507 280 (within UK)

info@small-cruise-ships.com | small-cruise-ships.com