



SEYCHELLES CRUISE

On the Seychelles Enchantment luxury cruise, guests embark on a breathtaking round trip beginning and ending in Victoria, Mahe Island. This 11-day journey unveils the splendors of the Seychelles archipelago, visiting iconic islands such as Praslin, La Digue, Curieuse, and Bird Island, each offering a unique tapestry of natural beauty and cultural heritage. Travelers will explore enchanting locations like Praslin's famed Anse Lazio beach and the UNESCO-listed Vallee de Mai, home to the rare coco de mer palm. On La Digue, Anse Source d'Argent boasts picturesque settings, while the rugged landscapes of Curieuse Island are adorned with red-earth mountains. Bird Island offers a conservational sanctuary for diverse avian species and the world's largest land tortoise, Esmeralda. Throughout the "Seychelles Enchantment" cruise, guests can engage in a range of optional activities. Kayaking with the expedition team offers possible sightings of marine life such as dolphins and sea turtles. Hiking trails on Grande Soeur lead to panoramic island views, enhancing the adventurous experience. Whether marveling at bustling markets in Victoria or meditating on secluded beaches, this cruise promises unforgettable escapades.



ITINERARY

DAY 1 Mahe

Victoria, the capital of Seychelles, is a vibrant city on Mahe Island's northeastern side, blending diverse cultures and traditions. Attractions include the bustling stalls of Victoria Market, the Hindu shrine of Arul Mihu Navasakthi Vinayagar Temple and the colourful "Jivan Imports" store. The Victoria Botanical Garden features Aldabra giant tortoises and 200 plant



The Small Cruise Ship Collection

www.small-cruise-ships.com

small-cruise-ships.com

info@small-cruise-ships.com

species, including unique trees like the coco-de-mer.

DAY 2 Curieuse

Curieuse Marine National Park's captivating landscape is made up of red earth mountains and granite hills. The Coco de Mer palm, which produces the world's largest nuts, grows only here and Praslin. Baie Laraie is home to all seven mangrove species in Seychelles, while the area is also the site of a tortoise sanctuary. Once a leper colony, Curieuse hosts giant Aldabra tortoises and sea turtles.

DAY 2 Aride

Aride Island, one of Seychelles' finest nature reserves, offers a glimpse into the islands' unspoilt past. The uninhabited granitic island hosts vital seabird colonies, with 10 breeding species, including the world's largest populations of two frigatebird species and the roseate tern subspecies *arideensis*. Reptile density is among the highest globally. Rare native plants like Wright's Gardenia grow in their natural state only on Aride.

DAY 3 Praslin

Praslin has some of the Seychelles' finest beaches, like Anse Lazio and Anse Georgette, with granite boulders dotting the soft sands. Busy Anse Volbert-Cote D'Or offers views of Chauve Souris islet. Inland, Praslin National Park's rugged jungle hosts rare flora and fauna. The Vallee de Mai, a UNESCO site, features a coco de mer forest, one of only two populations of these

enormous trees, bearing the world's largest fruit and heaviest seeds.

DAY 4 Bird Island

Bird Island, the northernmost in the Seychelles archipelago, is a coral cay surrounded by over 5 km of pristine beaches and turquoise waters. The island is famous for its birdlife, including sooty terns, fairy terns and common noddies. A haven for nature lovers, it focuses on wildlife conservation such as protecting the critically endangered hawksbill and green turtles. It's also home to Esmeralda, the world's largest land tortoise.

DAY 5 Grand Soeur

Grande Soeur, the slightly larger of the Sister Islands, is a peaceful spot known for its granite rocks emerging above palm-fringed beaches, creating stunning landmarks like Table Rock. Grande Soeur East, the most picturesque beach on the island, claims the crown as Seychelles' finest. The island is also one of the archipelago's best snorkelling spots with sea turtles, tropical fish and small reef sharks. Hiking trails lead to panoramic views.

DAY 6 La Digue

La Digue is renowned for idyllic beaches dotted with granite boulders like Anse Source d'Argent on the west coast. Secluded beaches like Anse Bonnet Carre and Anse Cocos on the east are accessible only on foot, featuring calm, shallow waters. Hikers



enjoy the ascent to Nid d'Aigle, the 333-m high island peak, with a restaurant halfway up. The Veuve Nature Reserve protects the rare Seychelles Black Paradise Flycatcher's breeding habitat.

Botanical Garden features Aldabra giant tortoises and 200 plant species, including unique trees like the coco-de-mer.

NB itineraries are subject to change

Day 7 Cousin Island

Cousin Island, a land and sea special reserve, is a conservation success story. In 1959, just 26 Seychelles warblers remained, clinging to life in a mangrove swamp. An intensive program cut back coconuts, allowing the warbler's native forest to recover. Cousin's restoration also benefited the endangered Seychelles magpie robin. The island is now a thriving indigenous forest and wetland, attracting birds, giant tortoises, lizards and more.

The tiny Moyenne Island in the inner Seychelles covers just 9 hectares. The 2km shoreline features white sand beaches and granite boulders characteristic of the Seychelles. Despite its size, Moyenne hosts high biodiversity. Moyenne Island National Park, the world's smallest, was established in 2009 by Brendon Grimshaw to preserve the ecosystem. Densely covered in trees and plants, it represents 40 native species, many unique to Moyenne.

Day 8 Victoria

Victoria, the capital of Seychelles, is a vibrant city on Mahe Island's northeastern side, blending diverse cultures and traditions. Attractions include the bustling stalls of Victoria Market, the Hindu shrine of Arul Mihi Navasakthi Vinayagar Temple and the colourful "Jivan Imports" store. The Victoria



The Small Cruise Ship Collection

www.small-cruise-ships.com

small-cruise-ships.com

info@small-cruise-ships.com

YOUR SHIP: DIANA

YOUR SHIP: Diana

VESSEL TYPE:

LENGTH:

PASSENGER CAPACITY:

BUILT/REFURBISHED:

Launched in 2023, SH Diana provides elegant and spacious 5-star accommodation for 192 guests in 96 spacious staterooms and suites, the vast majority with large balconies. Operated by an onboard team of 140 she provides a high level of personal service, exploring the Mediterranean and its famous sites of antiquity. Now sit back, relax and take a moment to get to know this amazing new ship, purpose-designed for our unique cultural expedition cruises. Named after the Ancient Roman goddess of light, the moon, hunting and the wilderness, SH Diana has been specially designed for worldwide cruising to explore the most inspiring and inaccessible places on earth. Building on the outstanding amenities of her sister ships, she adds a dedicated Multifunctional Room next to the Observation Lounge, a Private Dining Room for special occasions, and two tenders which bring guests a comfortable alternative to Zodiacs for expedition landings. A Polar Class 6 ice-strengthened hull combines with extra-large stabilisers to make your journey as comfortable as possible. SH Diana has been designed for immersive experiences, with extensive outside deck areas, multiple observation points and bright, open and relaxing public spaces with unobstructed views. The pleasure and safety of our

guests is paramount at all times, cared for by our attentive crew and seasoned expedition leaders. Cutting edge hygiene technology protects the health of all on board to the highest standards and includes air conditioning with UV sanitisation systems. SH Diana's 96 staterooms, including 11 suites, are each a superbly comfortable home from home and all feature panoramic sea views, a flame-effect fireplace, original works of art, plush couches, premium pocket sprung mattresses, en-suite bathrooms with glass-enclosed rain showers, and Egyptian cotton towels, bathrobes and sheets. A pillow menu offers customised head and neck comfort during rest, while a large flat screen TV, espresso machine with Illy premium coffee, tea making facilities with the finest Kusmi teas, and a minibar with refreshments enhance relaxation at any time. In-room dining is of course available at all hours. Wheelchair access Guests who use wheelchairs must bring their own, as we have only a small number of wheelchairs stored onboard for emergencies. To ensure ease of movement on the ship, wheelchairs and mobility aids must be no wider than 65cm. All mobility or medical equipment brought on board must be capable of being carried safely and must be declared before sailing. To ensure that all guests can safely evacuate during an emergency, guests requiring a wheelchair can only be accommodated in our ADA-accessible cabins. We offer an Oceanview and a Balcony stateroom on Diana. These staterooms are specifically designed to be completely ADA compliant and have a fully operable wheelchair-access wet unit. Diana has two lifts, serving every passenger deck apart from the Stargazing top deck, which is, therefore, more difficult to access, as are the Aft Marina and

The Small Cruise Ship Collection
www.small-cruise-ships.com

01432 507 280 (within UK)

info@small-cruise-ships.com | small-cruise-ships.com



The Small Cruise Ship Collection

www.small-cruise-ships.com

small-cruise-ships.com

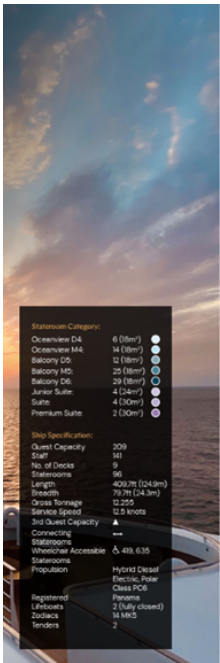
info@small-cruise-ships.com

Swan's Nest forward observation platform. Also, we don't have special equipment to access the swimming pool, jacuzzi, or sauna. Otherwise, the ship is entirely at your disposal. Many of the expeditions ashore in remote places are by Zodiac. Boarding these boats and returning aboard can present challenges for wheelchair users, as can navigating uneven terrain. These challenges are by no means always insurmountable, though, and our highly experienced crew is trained to provide reliable advice and assistance. They will make every effort to ensure wheelchair-using guests enjoy a memorable experience at each destination. Our general guidance, however, is to recommend wheelchair users travel with a companion for their ease and enjoyment. If you prefer to remain aboard, our panoramic interiors and ample open decks ensure an immersive, intimate experience of your inspiring



surroundings.

INSIDE YOUR SHIP

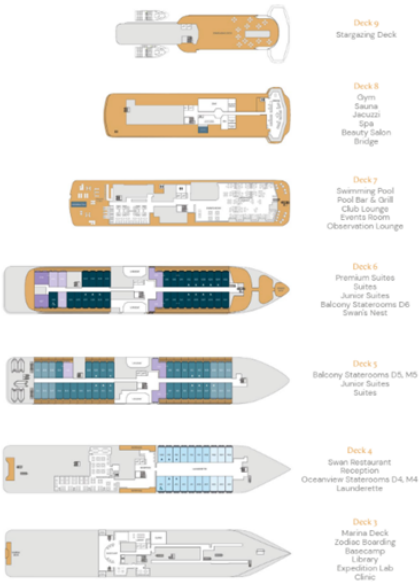


Stateroom Category:

- Oceanview D4: 6 (8m²)
- Oceanview M4: 14 (8m²)
- Balcony D5: 12 (8m²)
- Balcony M5: 25 (8m²)
- Balcony D6: 24 (8m²)
- Junior Suite: 4 (24m²)
- Suite: 4 (30m²)
- Premium Suite: 2 (30m²)

Ship Specification:

- Guest Capacity: 209
- Crew: 101
- No. of Decks: 9
- Staterooms: 98
- Length: 400.7m (1243ft)
- Beam: 79.7m (243ft)
- Gross Tonnage: 12,205
- Service Speed: 12.5 knots
- 1st Guest Capacity: A
- Connecting Staterooms: A
- Staterooms: 4, 419, 635
- Wheelchair Accessible: A
- Staterooms: 4, 419, 635
- Propulsion: Hybrid Diesel
- Electric: Polar Class PC-6
- Permanents: 2 (fully closed)
- 14 MMS
- 2



Balcony D5



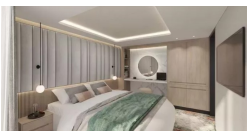
Balcony D6



Balcony M5



Junior Suite



Oceanview D4



Oceanview M4



Premium Suite

Suite



The Small Cruise
Ship Collection

www.small-cruise-ships.com

small-cruise-ships.com

info@small-cruise-ships.com

PRICING

12-Oct-2025 to 19-Oct-2025

Premium Suite	£9935 GBP pp
Suite	£10200 GBP pp
Junior Suite	£8750 GBP pp
Balcony D6	£6773 GBP pp
Balcony M5	£6467 GBP pp
Oceanview D4	£4733 GBP pp
Balcony D5	£6161 GBP pp
Oceanview M4	£4937 GBP pp



The Small Cruise
Ship Collection

www.small-cruise-ships.com

01432 507 280 (within UK)

info@small-cruise-ships.com | small-cruise-ships.com