



The Small Cruise
Ship Collection

www.small-cruise-ships.com

small-cruise-ships.com

info@small-cruise-ships.com

A SOLAR ECLIPSE AT SEA: VOYAGE ALONG THE IBERIAN PENINSULA — WITH SMITHSONIAN JOURNEYS

In alliance with Smithsonian Journeys. This cruise is part of a collection of PONANT voyages that are specially-tailored for English-speaking travelers who want to engage with the world. In addition to the usual elements of the PONANT experience, the listed price for these voyages includes transfers to and from the ship, talks and discussions aboard ship by world class experts, and a shore excursion or activity in each port of call that encourages guests to embrace the sights, sounds, tastes, and smells of the local environment and culture. Sail aboard *Le Boreal* on an exceptional 8-day voyage exploring the treasures of Portugal's Algarve and Spain's Andalusia and enjoying the beauty of the Costa del Sol, interrupting your journey on the third day to witness a total solar eclipse lasting about two and a half hours with a totality of nearly 4 minutes, and then continuing to discover Moorish architecture, splendid wines, and beautiful beaches. Sailing from Lisbon, call first in Lagos, near the southwestern tip of Portugal, your gateway to the natural beauty and history of the Algarve. Here you may explore the coast on a kayaking tour and visit the grottoes of Benagil. Or travel to Silves, a typical Algarve village of cobblestoned streets, to enjoy a tasting of Algarve wines. In Marbella on Spain's Costa del Sol join an excursion into the countryside and a tasting of Andalusian olive oils and wines, and then return to the ship, which remains in port until late in the evening, providing time for you explore the waterfront of this famous resort town on your own. Mid-morning the next day, August 2, *Le Boreal* will be in position to experience the Total Solar Eclipse that begins about 9:30 a.m. and reaches totality approximately 90 minute later. As the eclipse comes to an end,

The Small Cruise
Ship Collection

www.small-cruise-ships.com

01432 507 280 (within UK)

info@small-cruise-ships.com | small-cruise-ships.com

The Small Cruise Ship Collection

www.small-cruise-ships.com

small-cruise-ships.com

info@small-cruise-ships.com

disembark in Málaga for an evening highlighted by traditional tapas or a wine tasting in the city's historic quarter. A morning at sea, passing through the Straits of Gibraltar, brings you to Cadiz, one of Spain's oldest cities. Here you may join a walking tour of the city, including lunch and a flamenco show ; or travel to nearby Jerez for tapas and a sampling of the town's eponymous sherry wines; or you may just kick back for a day of relaxation at Cadiz's famed Barrosa Beach. A day at sea brings you back to Portugal and to the Atlantic port of Figueira da Foz , your final stop of the voyage. Options for activities ashore include a tour and tasting of the distinctive wines of Bairrada ; a tour of Coimbra , Portugal's former capital and home to a historic university; and an excursion to the salt pans and oyster farms along



the coast.

ITINERARY

Day 1 - Lisbon

Portugal's capital city located on the banks of the Tagus, only a few kilometres from the Atlantic coast, is a city of exceptionally rich cultural diversity. At the mouth of the river harbour, impose two UNESCO World Heritage monuments, Jeronimos monastery and Belem tower. The Alfama hillside is also worth visiting: known for its fado bars and its Moorish streets, this district is the oldest one of the city and one of the most typical. Not far from there, Chiado's elegant streets are home to big fashion labels and are an invitation to a bit of luxury shopping.

Day 2 - Portimão

At the entrance of the River Arade, Portimao is a former sardine port that has become a famous seaside city. From this pleasant town, you can explore Silves, the former capital of the Algarve. The town is dominated by a Moorish castle, one of the best preserved in Portugal. You can also admire the incredible cathedral with its baroque façade, built on the site of an old mosque. Then you will go to Monchique, a small mountain town surrounded by a forest lush eucalyptus and cork oaks. In the maze of narrow cobbled streets and whitewashed houses, you will discover here a wilder and more authentic Algarve.

Day 3 - Marbella

In the province of Malaga, Marbella is a renowned seaside resort on the Costa del Sol. The remains of early Christian and Roman sites around this former mining town, located at the foot of the Sierra Blanca mountains, bear witness to a rich history. With its white houses on flowery little streets, the old town is perfect for a pleasant stroll. The Plaza de los Naranjos, former focal point of the city, is near the 10th-century Arabic castle and

The Small Cruise Ship Collection
www.small-cruise-ships.com

01432 507 280 (within UK)

info@small-cruise-ships.com | small-cruise-ships.com



The Small Cruise Ship Collection

www.small-cruise-ships.com

small-cruise-ships.com

info@small-cruise-ships.com

the Church of Santa Maria de la Encarnacion. Not far from here, you'll be able to discover the magnificent viewpoints offered by Ronda, a picturesque town perched 700 metres (2,296 feet) high. Its Puente Nuevo bridge majestically crosses the gorges of the Guadalevin River that cuts the town in two.

Day 4 - Total Eclipse Observation

At sea, facing completely unobstructed skies, the Captain will take you, weather conditions permitting, in search of the best place to observe the total eclipse. On board, admire the horizon plunge suddenly into darkness and enjoy this unique spectacle, during which the Moon will obscure the Sun.

Day 4 - Malaga

A historical and festive town, Malaga is located in Andalusia, on the Costa del Sol. Between the marina and the beaches, the seaside promenade of La Farola offers an ideal setting for strolling and relaxing. Set slightly further back, the Malagueta bullring is one of the emblematic sites of the city. From the hill overlooking the old town, one can see Gibralfaro castle and the Alcazaba, two fortified ensembles rising out from the cypresses and maritime pines. To visit Pablo Picasso's birthplace, you will go first to the courtly plaza de la Merced. A few streets back from here, you can explore the museum dedicated to the artist, in the Buenavista palace.

Day 5 - Cadiz

Andalusia's Cadiz is located on the Costa de la Luz, in the south-west of Spain. From the beaches of Cortadura, to the flamenco bars of Santa Maria, through the colourful streets of la Viña, you will be amazed by this city, which is both steeped in history and extremely festive. In the medieval El Populo district, you will stroll along covered passages in the narrow gaps

between houses. You will also be able to mosey around the lush Mina square. The star of the show is the magnificent cathedral and its dome crowned with yellow porcelain, presiding above the Ocean.

Day 6 - At sea

During your journey at sea, make the most of the many services and activities on board. Treat yourself to a moment of relaxation in the spa or stay in shape in the fitness centre. Depending on the season, let yourself be tempted by the swimming pool or a spot of sunbathing. This journey without a port of call will also be an opportunity to enjoy the conferences or shows proposed on board, depending on the activities offered, or to do some shopping in the boutique or to meet the PONANT photographers in their dedicated space. As for lovers of the open sea, they will be able to visit the ship's upper deck to admire the spectacle of the waves and perhaps be lucky enough to observe marine species. A truly enchanted interlude, combining comfort, rest and entertainment.

Day 7 - Figueira da Foz

Situated at the mouth of the Mondego River, 40 kilometres (25 miles) from Coimbra, Figueira da Foz is known for its beautiful, vast beaches of white sand. A major fishing and trading port in the region, the city has been a popular destination with the Portuguese since the 19th century, a golden age during which the aristocracy made it their seaside resort of choice. Beautiful villas and casinos have sprung up along the immaculate beaches, giving the town an eternal holiday atmosphere. Its proximity to Coimbra makes it an ideal stopover for many travellers wishing to discover one of the jewels of Portugal and its rich history.

The Small Cruise Ship Collection

www.small-cruise-ships.com

01432 507 280 (within UK)

info@small-cruise-ships.com | small-cruise-ships.com



The Small Cruise
Ship Collection

www.small-cruise-ships.com

small-cruise-ships.com

info@small-cruise-ships.com

Day 8 - Lisbon

Portugal's capital city located on the banks of the Tagus, only a few kilometres from the Atlantic coast, is a city of exceptionally rich cultural diversity. At the mouth of the river harbour, impose two UNESCO World Heritage monuments, Jeronimos monastery and Belem tower. The Alfama hillside is also worth visiting: known for its fado bars and its Moorish streets, this district is the oldest one of the city and one of the most typical. Not far from there, Chiado's elegant streets are home to big fashion labels and are an invitation to a bit of luxury shopping.

Please note:

Itineraries are subject to change.



The Small Cruise Ship Collection

www.small-cruise-ships.com

small-cruise-ships.com

info@small-cruise-ships.com

YOUR SHIP: LE BOREAL

YOUR SHIP:	Le Boreal
VESSEL TYPE:	142 metres. Passenger Capacity: 264 (in twin cabins, just 200 in Antarctica). Built: 2011
LENGTH:	
PASSENGER CAPACITY:	
BUILT/REFURBISHED:	

Luxury Expedition / Cruise Ship A superb mega-yacht with 132 cabins, she is the fruit of the expertise of the Italian Fincantieri shipyard and French sophistication, as interpreted by designer Jean-Philippe Nuel. Le Boreal creates a unique atmosphere, a subtle blend of luxury, intimacy and well-being. The best materials, discreet elegance and a tasteful decor combined with exterior and interior lines to reflect a nautical mood. On board, soothing neutral tones are enlivened by splashes of red, our signature theme linking tradition and innovation to create personal touches in the spirit of a "private yacht". Cuisine Loyal to the great French tradition, the haute cuisine on board is worthy of the finest restaurants, where discreet, attentive service is the hallmark. Choose from two restaurants for breakfast, lunch and dinner. The Gastronomic Restaurant is situated on Le Liberte Deck and serves you French and international cuisine accompanied by fine wine. In the Grill Restaurant, you have the opportunity to eat outside and enjoy buffet lunch and themed dinner. Life On Board Whether you want to join other guests in the theatre or games area (Wii™ consoles, etc), or relax on your

own in a quiet corner of the library, Le Boreal has been designed to meet the needs of every guest. Everything has been done to preserve the independence of each guest to suit their personal tastes: lounges for lectures and shows, a spa in partnership with Carita™, but also more intimate spaces such as the library and internet corner. Comfortable cabins, nearly all with private balcony, are available for families either as triples or as communicating cabins. There is also a games area with Wii™ consoles, children's menus, and a baby-sitting service. Just as if you were on a private yacht, your time is your own to do as you please. Fitted with the latest equipment (Kinesis Wall, running machine) and in partnership with the famous Carita™ brand, the Beauty Centre on Le Boreal welcomes you for some relaxation and pampering (beauty treatments, hairdresser, hammam, balneotherapy). Wheelchairs 3 specially adapted wheelchair cabins (Deck 3 = Superior cabin no. 307, no balcony, Deck 4 = Prestige Cabin no. 407 - with balcony and Deck 5 = Prestige Cabin no 509, with balcony) and lifts to all decks/areas. Please click the following links to read more about Ponant and the other Ponant

The Small Cruise Ship Collection

www.small-cruise-ships.com

01432 507 280 (within UK)

info@small-cruise-ships.com | small-cruise-ships.com



The Small Cruise Ship Collection

www.small-cruise-ships.com



small-cruise-ships.com

info@small-cruise-ships.com



cruise ships.



The Small Cruise Ship Collection

www.small-cruise-ships.com

01432 507 280 (within UK)

info@small-cruise-ships.com | small-cruise-ships.com

The Small Cruise Ship Collection

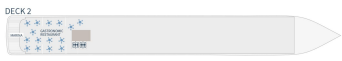
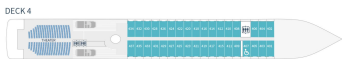
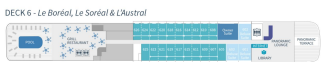
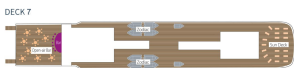
www.small-cruise-ships.com

small-cruise-ships.com

info@small-cruise-ships.com

INSIDE YOUR SHIP

Deck plans - Le Boréal, L'Austral, Le Soléal & Le Lyrial



DECK 7
Open-air bar - Sun deck

DECK 6:
24 Deluxe, L'Austral, Le Soléal, Owner's Suite - 3 Deluxe Suites with private balcony - 33 Prestige staterooms with private balcony (with 18 Prestige staterooms convertible into 9 Prestige suites)
Le Lyrial: Owner's Suite - 1 Grand Privilege Suite - 3 Deluxe Suites with private balcony - 3 Grand Deluxe Suite - 8 Privilege Suites - 1 Prestige stateroom - Pool - Grill Restaurant - Internet space - Library - Panoramic Lounge - Panoramic terrace

DECK 5:
37 Prestige staterooms with private balcony with 22 Prestige staterooms convertible into 12 Prestige suites - Fitness - PONANT yacht spa (Bathhouse, Hammam, Massage, manicure) - Relaxation room - Image & photo desk - Bridge

DECK 4:
36 Prestige Staterooms with private balcony - Theater

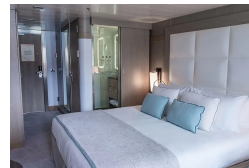
DECK 3:
38 Deluxe Staterooms with private balcony - 8 Superior Staterooms - Main lounge - Shop - Reception Desk - Excursion Desk - Medical center

DECK 2:
Gastronomy Restaurant - Marina

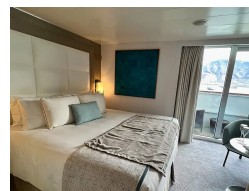
- Owner's Suite Deck 6
- Privilege Suites Deck 6 - Le Lyrial
- Grand Privilege Suite Deck 6 - Le Lyrial
- Prestige Suites Ports 6 - 8 (except Le Lyrial)
- Grand Deluxe Suites Deck 6 - Le Lyrial
- Deluxe Suites Deck 6
- Prestige Staterooms Deck 4 - 5 - 6
- Deluxe Staterooms Deck 3
- Superior Staterooms Deck 3



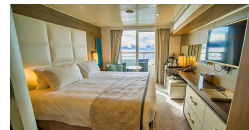
Deluxe Stateroom



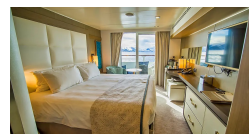
Deluxe Suite



Prestige Deck 4



Prestige Deck 5



Prestige Deck 5 Suite

Prestige Deck 6

Prestige Deck 6 Suite

Superior Stateroom



The Small Cruise Ship Collection

www.small-cruise-ships.com

small-cruise-ships.com

info@small-cruise-ships.com

PRICING

30-Jul-2027 to 06-Aug-2027

Prestige Deck 5	£8195 GBP pp
Prestige Deck 6 Suite	£17035 GBP pp
Superior Stateroom	£6515 GBP pp
Prestige Deck 5 Suite	£16195 GBP pp
Prestige Deck 6	£8645 GBP pp
Deluxe Stateroom	£7045 GBP pp
Prestige Deck 4	£7805 GBP pp
Deluxe Suite	£12005 GBP pp