

## The Small Cruise Ship Collection

www.small-cruise-ships.com

small-cruise-ships.com

info@small-cruise-ships.com

## A SAILING WEEK FULL OF WINE CULTURE, SICILIAN LIFESTYLE AND ITALIAN ROMANCE

This voyage traces the southern Italian coast through Sicily to Malta, combining volcanic terrain, historic port cities, and deeply rooted Mediterranean culture. From Naples, the route unfolds through Trapani and Palermo, where layers of Arab, Norman, and Baroque architecture define the urban landscape, then continues to Lipari's stark volcanic forms and Taormina's dramatic cliffs and ancient theatres. In Syracuse, the classical heritage of Ortigia contrasts with later Baroque grandeur, before the journey concludes in Valletta, a fortified city shaped by centuries of maritime power and strategic significance.



### ITINERARY

Day 1 Naples, Italy

Naples rises from the sea around a huge bay and extends up into the hills like an amphitheatre. From the Castello Sant' Elmo on the Vomero you can enjoy a fantastic view over the sea of houses, the port and the Gulf. The pretty center of this chaotic Campanian city is the old town, designated a UNESCO World Heritage Site, with its huge fortresses, dignified churches and monasteries, splendid squares and palaces, and maze of

The Small Cruise Ship Collection

www.small-cruise-ships.com

01432 507 280 (within UK)

info@small-cruise-ships.com | small-cruise-ships.com



## The Small Cruise Ship Collection

[www.small-cruise-ships.com](http://www.small-cruise-ships.com)

[small-cruise-ships.com](http://small-cruise-ships.com)

[info@small-cruise-ships.com](mailto:info@small-cruise-ships.com)

winding streets.

### Day 2 Day under full sails

Climbing the rigging, untying ropes, setting sails - today is all about sailing. Time to lean back and relax in the deck chair and watch the passionate crew hoisting the sails by hand.

### Day 3 Trapani, Sicily

The old town and port of Trapani lies on a picturesque crescent-shaped headland at the foot of Monte Erice. You will discover many little treasures browsing through the beautiful town center. For the last 1,000 years, fine black and red coral jewellery has been made here. The mountain town of Erice is a real architectural gem. Not far from Tapani, this idyllic little town is tucked away in a picturesque hilltop setting overlooking the countryside and the sea. Protected defiantly by a wall, the town retains its splendid medieval atmosphere.

### Day 4 Palermo, Sicily

The character of Palermo, Sicily's vibrant capital, was mainly forged by the Arabs, Swabian dynasty and Normans. Noble palaces line the magnificent streets, cheerful-looking Art Nouveau houses stand next to Baroque buildings and a little further on you are faced with pure Gothic facades. The medieval quarter towers above the huge Palazzo Reale with its "Capella Palatina", a masterpiece in the Arab-Byzantine-Norman style. The small mountain town of Monreale gives you a breathtaking view over the town and the bay, as well as the 12th century cathedral whose interior combines Romanesque, Byzantine and Arab art with rich gold mosaics.

### Day 5 Lipari, Aeolian Islands

Lipari is a tranquil little spot and the largest of the Aeolian Islands, with a cultural heritage stretching back over 6,000 years. Right from first glance you can see its volcanic heritage, with some of the rock formations resembling sculptures, and the entire group of islands is a UNESCO World Heritage Site. The Aeolian Museum is set on the castle hill and holds an impressive collection of prehistoric and ancient artefacts from this volcanic group of islands. You will find the southern Italian way of life in this little port infectious.

### Day 6 Taormina (Naxos), Sicily

Taormina is perched on a rock with a majestic view over the sea. In the 19th century, this small town had already developed into a dream destination for well-heeled travellers and artists. The town's fascination lies in its elegance, the many ancient buildings, the stunningly beautiful coastline, the mild climate, and the view over the silhouette of Etna. Europe's largest volcano is over 9,843 feet high, has four summit craters and around 400 subsidiary craters, and is covered with snow almost all year round. In ancient times it was considered the seat of the gods, but nowadays large sections of it are a nature reserve.

### Day 7 Syracuse, Sicily

The municipal area of Syracuse boasts relics from cultural history going back more than three millennia. In ancient times, the city was the most powerful in the known world and was famed for its splendour. The island of Ortigia, now a UNESCO World Heritage Site, was where Syracuse began its rise as an ancient city. The huge cathedral is at the heart of the old town,

The Small Cruise  
Ship Collection

[www.small-cruise-ships.com](http://www.small-cruise-ships.com)

**01432 507 280** (within UK)

[info@small-cruise-ships.com](mailto:info@small-cruise-ships.com) | [small-cruise-ships.com](http://small-cruise-ships.com)





magnificent palaces line the Piazza and wide promenades invite you to take a stroll. The archaeological park brings Greek and Roman history back to life. Yet Syracuse exudes southern Italian charm, with washing drying outside the windows.

#### Day 8 Valletta, Malta

This strategically important location has always attracted foreign conquerors. More than 7,000 years ago, a civilisation existed here, leaving behind enormous temple complexes. Just like proud Valletta, these are now UNESCO World Heritage Sites. Jean Parisot de la Valette, Grand Master of the Order of St John, founded a modern fortified city on a rock in 1566, between the two splendid natural ports of Marsamxett and Grand harbor. Long rows of facades made from golden-yellow blocks of chalk stretch along the straight streets. Splendid Renaissance and Baroque buildings are evidence of riches and power, such as the Palace of the Grand Master and the impressive St John's Co-Cathedral.

#### Please note:

Itineraries are subject to change.

# The Small Cruise Ship Collection

[www.small-cruise-ships.com](http://www.small-cruise-ships.com)

[small-cruise-ships.com](http://small-cruise-ships.com)

[info@small-cruise-ships.com](mailto:info@small-cruise-ships.com)

## YOUR SHIP: SEA CLOUD II

<b>YOUR SHIP:</b>	<b>Sea Cloud II</b>
<b>VESSEL TYPE:</b>	<b>Tall Ship (Sailing)</b>
<b>LENGTH:</b>	<b>105 metres</b>
<b>PASSENGER CAPACITY:</b>	<b>96</b>
<b>BUILT/REFURBISHED:</b>	<b>2001</b>

Launched in 2001, Sea Cloud II is a stunning vessel, built along traditional lines, but offering deluxe accommodation. She combines timeless elegance of sailing ships of the past with the highest safety standards and the luxurious comfort of modern cruise ships. Just like her legendary sister ship Sea Cloud, the 29,600 square feet of sails is set by hand which is a truly magical sight. Built to accommodate 96 passengers in five star luxury, she offers a range of beautifully appointed suites and cabins which are furnished with great style. All accommodations have outside views and the bathrooms, in light marble, are unusually spacious and extremely comfortable. The finest, carefully chosen fabrics, combined with leather, rattan and other materials, brass and gold, precious woods and marble together create an impressive ensemble. No expense has been spared to create a sympathetic ambience in both the accommodations and public areas and this is reflected throughout the vessel. Public areas include an elegant lounge, library, fitness centre, boutique, lido bar and hospital. The single sitting dining room is airy and modern and the quality of the cuisine and service will be to the highest of standards, as one would expect on a Sea Cloud cruise. Relax on the Lido deck and experience the natural

grandeur of travelling under sail, rekindling memories of a



bygone age.

The Small Cruise  
Ship Collection  
[www.small-cruise-ships.com](http://www.small-cruise-ships.com)

**01432 507 280** (within UK)

[info@small-cruise-ships.com](mailto:info@small-cruise-ships.com) | [small-cruise-ships.com](http://small-cruise-ships.com)



# The Small Cruise Ship Collection

www.small-cruise-ships.com

small-cruise-ships.com

info@small-cruise-ships.com

## INSIDE YOUR SHIP



Please note that category F cabins have one lower and one upper berth bed

Key  
 Cat A Cat B Cat C  
 Cat D Cat E Cat F

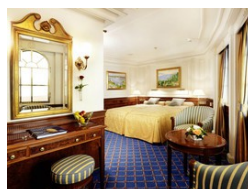
Category A. From



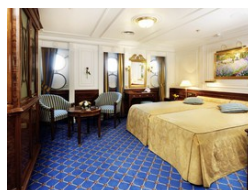
Category B. From



Category C. From



Category D. From



Category E. From

Category F Upper/Lower Beds. From

The Small Cruise Ship Collection  
 www.small-cruise-ships.com

01432 507 280 (within UK)

info@small-cruise-ships.com | small-cruise-ships.com



# The Small Cruise Ship Collection

[www.small-cruise-ships.com](http://www.small-cruise-ships.com)

[small-cruise-ships.com](http://small-cruise-ships.com)

[info@small-cruise-ships.com](mailto:info@small-cruise-ships.com)

## PRICING

29-Sep-2027 to 06-Oct-2027

Category F Upper/Lower Beds. From	£3839 GBP pp
Category E. From	£4435 GBP pp
Category D. From	£5175 GBP pp
Category C. From	£5319 GBP pp
Category B. From	£5909 GBP pp
Category A. From	£6799 GBP pp



The Small Cruise  
Ship Collection

[www.small-cruise-ships.com](http://www.small-cruise-ships.com)

01432 507 280 (within UK)

[info@small-cruise-ships.com](mailto:info@small-cruise-ships.com) | [small-cruise-ships.com](http://small-cruise-ships.com)