

The Small Cruise Ship Collection

www.small-cruise-ships.com

small-cruise-ships.com

info@small-cruise-ships.com

6-NIGHT MERGUI ISLAND EXPEDITION

Virtually unknown to the outside world, the Mergui Archipelago is located in Myanmar's (Burma's) remote south: a group of 800 deserted islands that lie at the heart of our sailing area. Think white beaches lined with palm trees and dense jungle. Think swimming in azure water amongst colourful reef fish, spotting corals, and collecting seashells. Now, picture eagles circling above, gibbons and monitor lizards eyeing you from the thickets, while a sundowner is being mixed for you on board the yacht. And best of all: you have this entire experience to yourself. You can sail for days on end and meet not a soul but the odd fisherman in a dugout canoe. Just across from the Thai border, the archipelago opened to foreigners as recently as the late 1990s. With only a few of the 800 islands sparsely populated and a couple dozen visitors to the entire area each month, the Mergui Archipelago remains one of the planets most unspoilt destinations.



ITINERARY

Day 1 - Kawthoung, Embarkation

Boarding time is at 3 pm. While you enjoy a welcome drink on board, the crew takes care of immigration formalities for you,

The Small Cruise Ship Collection
www.small-cruise-ships.com

01432 507 280 (within UK)

info@small-cruise-ships.com | small-cruise-ships.com



The Small Cruise Ship Collection

www.small-cruise-ships.com

small-cruise-ships.com

info@small-cruise-ships.com

before Drenec heads towards South Bay on Za Det Gyi Island. For dinner, the chef surprises with fresh catch served under the clear evening sky.

Day 2 - Myin Khwa Island & Macleod Island

In the morning we head to the beach for some snorkelling and swimming. We have lunch under passage while Drenec takes us to Myin Khwa Island where we explore the beautiful limestone caves, which lead into a hidden lagoon, only accessible by dinghy boat and kayak. In the evening we drop anchor at Macleod Island. On its peaceful beach, we light a bonfire and sip sundowners while counting the stars.

Day 3 - Boulder Rock, Lan Kyun & Kyant Gyo Island

Right after breakfast, Drenec heads to Boulder Rock. With its gorgeous white beaches and long reefs, this is the perfect spot to explore life under water. After lunch on the beach, Drenec sails to Jar Lan Kyun (Great Swinton), where we visit the Moken sea gypsies and the island temple. We spend the afternoon in their village and learn about Moken culture before Drenec heads to Kyant Gyo Island for a quiet night.

Day 4 - Kawthaung, Sa Lon Kyun & Barwell Island

In the early morning hours we explore the mangrove forest and watch eagles and hornbills circling above before Drenec heads back to Kawthaung to pick up the new guests. She drops us off at Sa Lon Kyun where we spend some time visiting the local monastery and chatting with the monks who are excited to have some rare visitors. After the break, Drenec takes course for Barwell Island. Drenecs gourmet chef serves dinner under the stars.

Day 5 - Nyaung Wee & Tar Yar Island

After an early morning swim by the beach, Drenec heads towards the Mid Group: some of Myanmar's most scenic islands. There is a picnic on the beach before we visit the Moken sea gypsy village on Nyaung Wee, where we spend the afternoon. We visit the temple and the school before heading north to Tar Yar Island. At night, the gibbons' song from the beach lulls us to sleep.

Day 6 - Lampi National Park & Kyun Phi Lar

After breakfast aboard, we explore the wildlife and the mangrove forests of Lampi National Park. We head towards Kyun Phi Lar (Lord Laugborough) and search for fossils on the shore. Back on Drenec, we make for Za Det Kale Kyun, where we celebrate the last evening with a bonfire on the beach. The setting sun turns the ocean into a sea of gold.

Day 7 - Kawthaung, Disembarkation

We jump into the crystal water for a swim before enjoying a long brunch on deck while Drenec makes her way back to Kawthaung. Arrival is at noon. Our crew and ground team will be there for you to assure all transfers and connections work smoothly.

The Small Cruise
Ship Collection

www.small-cruise-ships.com

01432 507 280 (within UK)

info@small-cruise-ships.com | small-cruise-ships.com

The Small Cruise Ship Collection

www.small-cruise-ships.com

small-cruise-ships.com

info@small-cruise-ships.com

YOUR SHIP: DRENEC

YOUR SHIP:	Drenec
VESSEL TYPE:	Expedition Yacht
LENGTH:	106 m
PASSENGER CAPACITY:	11
BUILT/REFURBISHED:	2012

Drenec was built in the Netherlands as a working boat designed to spend long weeks on the open seas. In 1986, she underwent a major overhaul and was reborn as a high-class expedition vessel. Drenec spent the following years on expeditions to the Arctic, the Indian Ocean, Central American waters and the Mediterranean. In 2012, she was completely refitted and upgraded in Malta. Drenec joined the fleet in 2015 to explore the wonders of Myanmar's hidden islands. Drenec has all the luxury comfort you can expect from a yacht of her size. Drenec has five spacious guest cabins, four with double beds and one with a twin bed. All cabins have ensuite bathrooms equipped with heated towel holders and the large owner's suite additionally features a bathtub. With designated workspaces and sofas, the cabins feel like comfortable hotel rooms, designed with great love for detail. All cabins are fully air-conditioned and have flatscreen TV sets. Guests have access to the large digital movie library through the yacht's on-board media system.



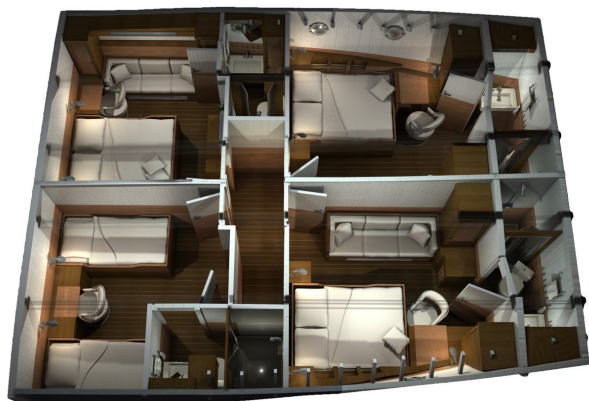
The Small Cruise Ship Collection

www.small-cruise-ships.com

small-cruise-ships.com

info@small-cruise-ships.com

INSIDE YOUR SHIP





The Small Cruise Ship Collection

www.small-cruise-ships.com

small-cruise-ships.com

info@small-cruise-ships.com

PRICING

ADDITIONAL CHARGES:

Government Fee From 290 USD pp



The Small Cruise
Ship Collection
www.small-cruise-ships.com

01432 507 280 (within UK)

info@small-cruise-ships.com | small-cruise-ships.com