

## The Small Cruise Ship Collection

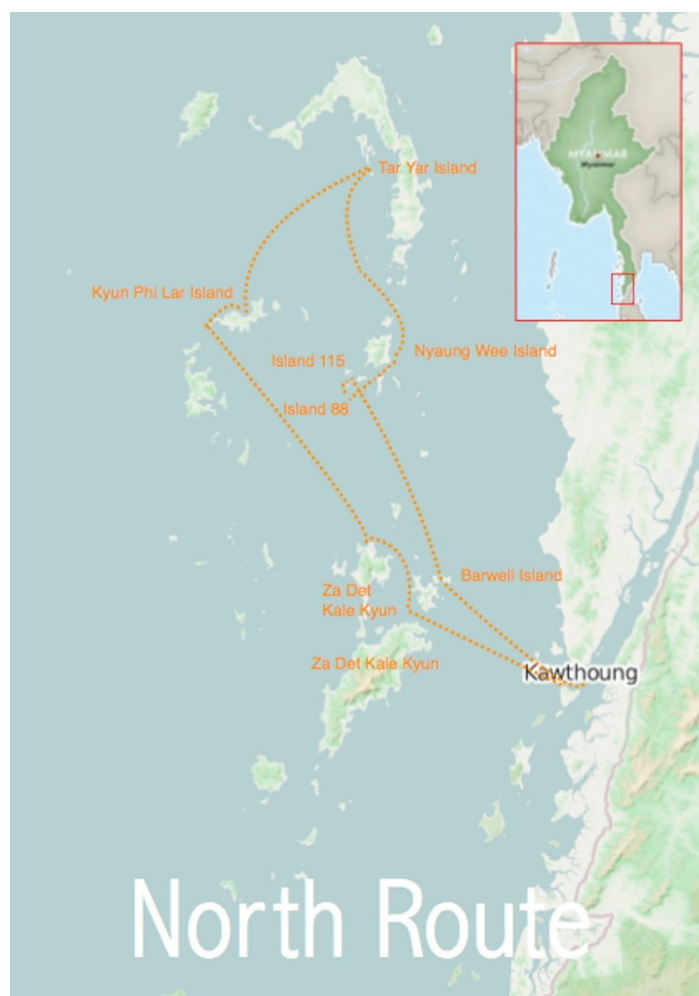
[www.small-cruise-ships.com](http://www.small-cruise-ships.com)

[small-cruise-ships.com](http://small-cruise-ships.com)

[info@small-cruise-ships.com](mailto:info@small-cruise-ships.com)

### 3-NIGHT MERGUI ISLAND EXPEDITION - NORTH ROUTE

Virtually unknown to the outside world, the Mergui Archipelago is located in Myanmar's (Burma's) remote south: a group of 800 deserted islands that lie at the heart of our sailing area. Think white beaches lined with palm trees and dense jungle. Think swimming in azure water amongst colourful reef fish, spotting corals, and collecting seashells. Now, picture eagles circling above, gibbons and monitor lizards eyeing you from the thickets, while a sundowner is being mixed for you on board the yacht. And best of all: you have this entire experience to yourself. You can sail for days on end and meet not a soul but the odd fisherman in a dugout canoe. Just across from the Thai border, the archipelago opened to foreigners as recently as the late 1990s. With only a few of the 800 islands sparsely populated and a couple dozen visitors to the entire area each month, the Mergui Archipelago remains one of the planets most unspoilt destinations.



#### ITINERARY

Day 1 - Kawthoung, Embarkation

Boarding time is at 3 pm. The crew welcomes you aboard with a glass of champagne and takes care of official formalities. While

The Small Cruise  
Ship Collection  
[www.small-cruise-ships.com](http://www.small-cruise-ships.com)

01432 507 280 (within UK)

[info@small-cruise-ships.com](mailto:info@small-cruise-ships.com) | [small-cruise-ships.com](http://small-cruise-ships.com)



Drenec takes course for Barwell Island, the captain introduces the area and our itinerary. Drenecs gourmet chef serves dinner under the stars.

#### Day 2 - Nyaung Wee & Tar Yar Island

After an early morning swim by the beach, Drenec heads towards the Mid Group: some of Myanmar's most scenic islands. There is a picnic on the beach before we visit the Moken sea gypsy village on Nyaung Wee, where we spend the afternoon. We visit the temple and the school before heading north to Tar Yar Island. At night, the gibbons' song from the beach lulls us to sleep.

#### Day 3 - Lampi National Park, Kyun Phi Lar & Za Det Kale Kyun

After breakfast aboard, we explore the wildlife and the mangrove forests of Lampi National Park. We head towards Kyun Phi Lar and search for fossils on the shore. Back on Drenec, we make for Za Det Kale Kyun, where we celebrate the last evening with a bonfire on the beach. The setting sun turns the ocean into a sea of gold.

#### Day 4 - Kawthaung, Disembarkation

We jump into the crystal water for a swim before enjoying a long brunch on deck while Drenec makes her way back to Kawthaung. Arrival is at noon. Our crew and ground team will be there for you to assure all transfers and connections work smoothly.



## The Small Cruise Ship Collection

[www.small-cruise-ships.com](http://www.small-cruise-ships.com)

[small-cruise-ships.com](http://small-cruise-ships.com)

[info@small-cruise-ships.com](mailto:info@small-cruise-ships.com)

### YOUR SHIP: DRENEC

<b>YOUR SHIP:</b>	<b>Drenec</b>
<b>VESSEL TYPE:</b>	<b>Expedition Yacht</b>
<b>LENGTH:</b>	<b>106 m</b>
<b>PASSENGER CAPACITY:</b>	<b>11</b>
<b>BUILT/REFURBISHED:</b>	<b>2012</b>

Drenec was built in the Netherlands as a working boat designed to spend long weeks on the open seas. In 1986, she underwent a major overhaul and was reborn as a high-class expedition vessel. Drenec spent the following years on expeditions to the Arctic, the Indian Ocean, Central American waters and the Mediterranean. In 2012, she was completely refitted and upgraded in Malta. Drenec joined the fleet in 2015 to explore the wonders of Myanmar's hidden islands. Drenec has all the luxury comfort you can expect from a yacht of her size. Drenec has five spacious guest cabins, four with double beds and one with a twin bed. All cabins have ensuite bathrooms equipped with heated towel holders and the large owner's suite additionally features a bathtub. With designated workspaces and sofas, the cabins feel like comfortable hotel rooms, designed with great love for detail. All cabins are fully air-conditioned and have flatscreen TV sets. Guests have access to the large digital movie library through the yacht's on-board media system.



The Small Cruise Ship Collection  
[www.small-cruise-ships.com](http://www.small-cruise-ships.com)

**01432 507 280** (within UK)

[info@small-cruise-ships.com](mailto:info@small-cruise-ships.com) | [small-cruise-ships.com](http://small-cruise-ships.com)

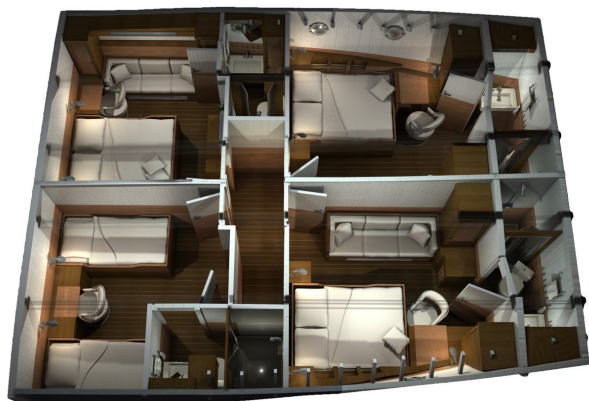
# The Small Cruise Ship Collection

[www.small-cruise-ships.com](http://www.small-cruise-ships.com)

[small-cruise-ships.com](http://small-cruise-ships.com)

[info@small-cruise-ships.com](mailto:info@small-cruise-ships.com)

## INSIDE YOUR SHIP



The Small Cruise  
Ship Collection  
[www.small-cruise-ships.com](http://www.small-cruise-ships.com)

01432 507 280 (within UK)

[info@small-cruise-ships.com](mailto:info@small-cruise-ships.com) | [small-cruise-ships.com](http://small-cruise-ships.com)



## The Small Cruise Ship Collection

[www.small-cruise-ships.com](http://www.small-cruise-ships.com)

[small-cruise-ships.com](http://small-cruise-ships.com)

[info@small-cruise-ships.com](mailto:info@small-cruise-ships.com)

## PRICING

---

### ADDITIONAL CHARGES:

Government Fee From 250 USD pp