



The Small Cruise  
Ship Collection

[www.small-cruise-ships.com](http://www.small-cruise-ships.com)

[small-cruise-ships.com](http://small-cruise-ships.com)

[info@small-cruise-ships.com](mailto:info@small-cruise-ships.com)

## 23 DAYS LUXURY AMAZON & BRAZIL CRUISE - BRIDGETOWN TO RIO DE JANEIRO

Feel your heart thumping as you enter the astonishing Amazon, before the pounding rhythms of Rio Carnival take over. Journey deep into the planet's most biodiverse region, departing from the tranquil Caribbean shores. Cruise the mighty Amazon, discovering endemic botanicals, rich indigenous cultures, and incredible wildlife - from playful pink river dolphins to colourful macaws. Three weeks of adventure and tropical beaches culminate in Rio's one-of-a-kind Carnival.



### ITINERARY

Days 0 - 1 - Pre Cruise & Bridgetown

- \_ **\*\*Pre Cruise Benefits\*\*** \_
- \_ **\*\*Private Executive Transfers\*\*** \_
- \_ **\*\*International flights - Economy class\*\*** \_
- \_ **\*\*Airport transfers\*\*** \_
- \_ **\*\*Hotel\*\*** \_



The Small Cruise  
Ship Collection

[www.small-cruise-ships.com](http://www.small-cruise-ships.com)

**01432 507 280** (within UK)

[info@small-cruise-ships.com](mailto:info@small-cruise-ships.com) | [small-cruise-ships.com](http://small-cruise-ships.com)



## The Small Cruise Ship Collection

[www.small-cruise-ships.com](http://www.small-cruise-ships.com)

[small-cruise-ships.com](http://small-cruise-ships.com)

[info@small-cruise-ships.com](mailto:info@small-cruise-ships.com)

Bridgetown, the captivating capital of Barbados, combines faded colonial history, captivating tradition, and vivid white beaches plucked directly from your richest imagination of Caribbean perfection. Recently listed as a UNESCO World Heritage site, thanks to its beautifully preserved colonial architecture, Bridgetown's mask of modernity covers a core of complex history and fascinating culture. Sherbet coloured buildings line up to overlook the waterfront of the Constitution River at the 'The Careenage' \- where gleaming ships bob on the blue water, and peaceful strolls along a wooden boardwalk await. Stop for a sobering moment at the commemorative plaque honouring the people traded at this spot, when Bridgetown was the British Empire's most important harbour, and first stop on the Transatlantic Slave Trade crossing. Just five minutes' stroll from here is Carlisle Bay - a postcard-perfect place where you'll find crystal-clear, turquoise seawater glowing in the Caribbean sun, and a mile of soft white powder sand. A treasure trove for divers, the shipwrecks scattered below the shallow water's waves are now inhabited by turtles and swirling, rainbow-coloured tropical fish. Head to the backstreets, where street food vendors serve up spicy chicken soup, barbecued pigtails and thirst-quenching coconut water. There are bargains aplenty to be had on Broad Street, where duty-free malls and souvenir stalls cram together, vying for your attention. Roebuck Street is the spot where one of the Caribbean's favourite drinks, rum, was discovered - having been created here from the by-products of the island's booming sugarcane trade. Nowadays, it's lined with bars splashing every variety of the deliciously spicy dark libation imaginable into glasses. For a touch more culture, visit one of the oldest synagogues in The Americas - Nidhe Israel Synagogue, which was built in 1654.

The adjoining museum tells the story of Barbados' Jewish immigrants, who were instrumental in the island's development.

### [Days 2 - 4 - Day at sea](#)

Days at sea are the perfect opportunity to relax, unwind and catch up with what you've been meaning to do. So whether that is going to the gym, visiting the spa, whale watching, catching up on your reading or simply topping up your tan, these blue sea days are the perfect balance to busy days spent exploring shore side.

### [Day 5 - Macapa](#)

Please note the call to Macapa is for clearance by Brazilian authorities only. Guests will not be able to debark the ship during this time. Clearance will include a safety inspection, health inspection and immigration formalities. Depending on the complexity of the ship this can take several hours.

### [Day 5 - Cruise Amazon River](#)

The mighty Amazon River over 6,400kms long, meanders through some of the most extreme natural environments and biologically diverse regions of our planet.

Sailing down the wide waters passing the dense greenery of rainforests, there's never a shortage of magical moments but often the greatest thrill is catching sight of an exotic creature. Look out for pink river dolphins playfully breaking through the water by the side of the boat, colourful parrots as they flash through the trees and sloths going slowly about their day. Cameras at the ready to film mischievous monkeys leaping through the rain forest canopy. Even when you can't see the wildlife you can hear it. The echoing cries of birds, insects and animals ring through the air.



The Small Cruise Ship Collection

[www.small-cruise-ships.com](http://www.small-cruise-ships.com)

**01432 507 280** (within UK)

[info@small-cruise-ships.com](mailto:info@small-cruise-ships.com) | [small-cruise-ships.com](http://small-cruise-ships.com)





## The Small Cruise Ship Collection

[www.small-cruise-ships.com](http://www.small-cruise-ships.com)

[small-cruise-ships.com](http://small-cruise-ships.com)

[info@small-cruise-ships.com](mailto:info@small-cruise-ships.com)

The Amazon is home to a diverse population of indigenous communities, some of whom are happy to share their culture with visitors, opening up their river side villages.

Witness the Meetings of the Waters, one of South America's most captivating natural phenomena. The dark waters of the Rio Negro meet the sandy coloured Rio Solimoes to form the Amazon River but refuse to mix. The colossal two rivers flow side by side for 6km until they eventually accept to mix.

The world's longest river, nurturing the largest rainforest on earth, is home to more than a third of all known species, yet is still one of the least explored regions on earth. No matter how impressive the statistics are, they can never do justice to the Amazon, you need to see it for yourself.

### Day 6 - Parintins

The small village of Parintins lies on Tupinambarana Island, which is part of a large river archipelago in the mid-Amazon, 250 miles east of Manaus. In existence for two centuries, Parintins is rich in Indian culture that is represented in the celebrated annual Boi-Bumba festival. It is a ritual of magic, mystery, passion and faith that has been held here for over 80 years, inspired by local legends. A stadium, the Bumbodromo, was built in 1988 to accommodate the over 40,000 spectators that come and take part in this festival each year. The Boi-Bumba is listed on the official Calendar of Events to be one of the highlights in Amazonas State. As a special treat, Silversea has arranged an exclusive performance, enacting the show for you with all the exuberance and vibrancy normally displayed in the real Parintins festival.

### Days 7 - 9 - Manaus

Lying in the heart of the Amazon, hundreds of miles upriver from the Atlantic, Manaus is a busy port city surrounded by the richest rainforest habitat on Earth. Placed strategically at the confluence of two rivers, the town was founded as a fortress by the Portuguese Navy, but quickly became a trade hub for the surrounding area. By the late 19th Century, Manaus was the centre of Brazil's booming rubber industry, and grew rapidly into one of the largest cities in Brazil. During this period, many of Manaus' grandest buildings were constructed by the city's 'Rubber Barons', including the Public Market, and the Amazon Theatre, a vast decadent opera house. Today, Manaus is a cultural melting pot, with a diverse population. A complex system of free trade rules has turned Manaus into one of the wealthiest cities in the Brazil, with heavy industry developing alongside traditional livelihoods such as river fishing, and gathering the bounty of fruit, nuts and medicinal plants which the rainforest bestows. However, it is the surroundings which give Manaus its unique character. The famous Meeting of Waters, where tannin-rich water from the Rio Negro combines with milky water from the Rio Solimoes to form the Amazon, can be seen just outside town, and the jungle beckons visitors to explore and discover. Excluding Manaus, the state of Amazonas is extremely sparsely populated, and in the largest rainforest on Earth, it is easy to forget the hustle and bustle of the city and simply enjoy the wonders of nature.

### Day 10 - Boca Da Valeria

Located between Santarem and Manaus, Boca de Valeria is the entrance to the Valeria Channel (boca meaning mouth). The channel leads to Lake Valeria, which marks the border between the States of Amazonas and Para. While the ship is at anchor, a colourful picture unfolds as canoes with the local population



The Small Cruise Ship Collection

[www.small-cruise-ships.com](http://www.small-cruise-ships.com)

**01432 507 280** (within UK)

[info@small-cruise-ships.com](mailto:info@small-cruise-ships.com) | [small-cruise-ships.com](http://small-cruise-ships.com)



## The Small Cruise Ship Collection

[www.small-cruise-ships.com](http://www.small-cruise-ships.com)

[small-cruise-ships.com](http://small-cruise-ships.com)

[info@small-cruise-ships.com](mailto:info@small-cruise-ships.com)

come out to meet the ship, providing additional excitement to your Amazon experience. There are no facilities to operate any organised excursions. If conditions permit, the ship's tenders may take you to one of the typical Caboclo (river dwellers) villages to get a glimpse of the natives' traditional lifestyle. See monkeys and snakes and also look at a selection of local handicrafts. Recommended dress is lightweight cotton. Sun protection and insect repellent also are essential.

### Day 11 - Cruise Amazon River

The mighty Amazon River over 6,400kms long, meanders through some of the most extreme natural environments and biologically diverse regions of our planet.

Sailing down the wide waters passing the dense greenery of rainforests, there's never a shortage of magical moments but often the greatest thrill is catching sight of an exotic creature. Look out for pink river dolphins playfully breaking through the water by the side of the boat, colourful parrots as they flash through the trees and sloths going slowly about their day. Cameras at the ready to film mischievous monkeys leaping through the rain forest canopy. Even when you can't see the wildlife you can hear it. The echoing cries of birds, insects and animals ring through the air.

The Amazon is home to a diverse population of indigenous communities, some of whom are happy to share their culture with visitors, opening up their river side villages.

Witness the Meetings of the Waters, one of South America's most captivating natural phenomena. The dark waters of the Rio Negro meet the sandy coloured Rio Solimoes to form the

Amazon River but refuse to mix. The colossal two rivers flow side by side for 6km until they eventually accept to mix.

The world's longest river, nurturing the largest rainforest on earth, is home to more than a third of all known species, yet is still one of the least explored regions on earth. No matter how impressive the statistics are, they can never do justice to the Amazon, you need to see it for yourself.

### Day 11 - Macapa

Please note the call to Macapa is for clearance by Brazilian authorities only. Guests will not be able to debark the ship during this time. Clearance will include a safety inspection, health inspection and immigration formalities. Depending on the complexity of the ship this can take several hours.

### Days 12 - 14 - Day at sea

Days at sea are the perfect opportunity to relax, unwind and catch up with what you've been meaning to do. So whether that is going to the gym, visiting the spa, whale watching, catching up on your reading or simply topping up your tan, these blue sea days are the perfect balance to busy days spent exploring shore side.

### Day 15 - Recife

Named after the coral reefs that take the sting out of the waves rolling ashore, Recife is a gleaming city where some of Brazil's best beach life plays out. A mesh of old waterways, three rivers and a lacy canal network add to the relaxed atmosphere and give the city its nickname as the Venice of Brazil. Sprawling out in the northeast of Brazil, Recife is the Pernambuco region's capital and boasts a glorious coastal location. With a pulsating Carnaval to rival Rio de Janeiro's, and a charming colonial core,



[www.small-cruise-ships.com](http://www.small-cruise-ships.com)

**01432 507 280** (within UK)

[info@small-cruise-ships.com](mailto:info@small-cruise-ships.com) | [small-cruise-ships.com](http://small-cruise-ships.com)





## The Small Cruise Ship Collection

[www.small-cruise-ships.com](http://www.small-cruise-ships.com)

[small-cruise-ships.com](http://small-cruise-ships.com)

[info@small-cruise-ships.com](mailto:info@small-cruise-ships.com)

this city is a tropical stop of relaxation, which boasts plenty of old-time splendour and irrepressible energy. A busy, sprawling city, the golden Boa Viagem beach is the city's outlet, where workers unload from glittering towers to the sandy embrace of its exhibitionist seafront. Lined by hotels, bars and restaurants, it's one of Brazil's longest and best urban beaches, and the city's spot to see and be seen. The warm waters may tempt you to swim, but beware, as sharks do linger here. Three rivers run through the city, interlinked by canals and spanned by 49 bridges. Take a catamaran ride along them, to sail in the shadows of opulent colonial-era buildings. This is a city of coconut flesh flavours - whether you're refreshing with a sweet coconut juice while tanning on the beach, or eating a noodle sauce of coconut and shrimp flavours. Olinda, just to the north, is a UNESCO World Heritage Site, and it sparkles with a collection of colonial architecture and beautiful baroque churches.

### Day 16 - Day at sea

Days at sea are the perfect opportunity to relax, unwind and catch up with what you've been meaning to do. So whether that is going to the gym, visiting the spa, whale watching, catching up on your reading or simply topping up your tan, these blue sea days are the perfect balance to busy days spent exploring shore side.

### Day 17 - Salvador de Bahia

A multicultural, multifaceted place, discover brilliant beach life, airy colonial plazas and infectious samba rhythms as you explore this Brazilian melting pot. Sat on a scenic peninsula, idyllic beaches coat the city on three sides, and a historic fort sits just offshore, watching the waters menacingly. One of the world's biggest carnivals is thrown towards the end of February,

but don't worry if you miss it - there's always an excuse to celebrate something in Salvador de Bahia. The old town - with its lemon and duck egg blue colours - rises above the city, peppered with gold-leaf flourishes and carved historical churches. Pelourinho street is one of the town's most dazzling - a picturesque gathering of bright hues and uneven cobbled streets. Bahia's capital and largest city was Brazil's first capital, built on the backs of slaves imported from Africa. Since then the cultures have fused to create a vibrant Afro-Brazilian cocktail. Moqueca is the local flavour here, a slow-cooked stew of coconut milk, seafood and bell peppers, its a creamy and delicious indulgence with a chilli kick. Enjoy a spot of relaxation on the city's beaches - and see a relatively rare phenomenon in Brazil - sunset dipping over the sea's waves, on the sands of the westerly facing Porto da Barra. Or, escape the crowds and recline below swaying coconut palms on the golden sands of beaches reaching up to the north, which are some of Brazil's most picturesque and secluded.

### Days 18 - 19 - Day at sea

Days at sea are the perfect opportunity to relax, unwind and catch up with what you've been meaning to do. So whether that is going to the gym, visiting the spa, whale watching, catching up on your reading or simply topping up your tan, these blue sea days are the perfect balance to busy days spent exploring shore side.

### Days 20 - 21 - Rio de Janeiro

Lie back on the golden sands to soak up the extraordinary setting - or watch on as muscled cariocas - locals - perform effortless athletic feats, during casual volleyball matches. A trip up to Rio de Janeiro's iconic art-deco statue of Christ the Redeemer is, of course, a must do - offering an extraordinary



[www.small-cruise-ships.com](http://www.small-cruise-ships.com)

**01432 507 280** (within UK)

[info@small-cruise-ships.com](mailto:info@small-cruise-ships.com) | [small-cruise-ships.com](http://small-cruise-ships.com)



view of the city rolling out before your eyes. You'll also want to take a cable car to swing by the top of Sugarloaf Mountain, which juts sharply into the sky from nowhere. Brazil's second largest city moves to an infectious samba beat, and the famous thumping Carnival floods colour and floats down its streets each year. Of course, Rio is also a city of sharp cultural contrasts - offering fun in the sun for some, while life goes on very much as it always has for others. Take a guided tour, led by a resident, to see the conditions inside these complex tapestries of colour and chaos first-hand. Tijuca National Park, offers easy-to-access tranquillity, immersing you in dense forestry and whopping birdsong. Later, watch the fiery shades of sunset spread across the sky in the city's oh so famous evening light show. With so much to offer, you'll quickly learn how Rio earned its other name 'Cidade Maravilhosa' - The Marvellous City.

#### Day 22 - Post Cruise

- \_ **\*\*Post Cruise Benefits\*\*** \_
- \_ **\*\*Airport transfers\*\*** \_
- \_ **\*\*International flights - Economy class\*\*** \_
- \_ **\*\*Private Executive Transfers\*\*** \_

#### Please note

Itineraries are subject to change.





The Small Cruise  
Ship Collection

[www.small-cruise-ships.com](http://www.small-cruise-ships.com)

[small-cruise-ships.com](http://small-cruise-ships.com)

[info@small-cruise-ships.com](mailto:info@small-cruise-ships.com)

## YOUR SHIP: SILVER NOVA

**YOUR SHIP:**

**Silver Nova**

**VESSEL TYPE:**

**LENGTH:**

**PASSENGER CAPACITY:**

**BUILT/REFURBISHED:**

Silver Nova is more than a new ship, it is a Nova way of luxury travel. This modern and beautiful vessel will debut in summer 2023, and is a home away from home for up to 728 guests. Silver Nova's innovative asymmetrical design introduces the world like never before, offering an immersive destination experience to our guests. With a gross tonnage of 54,700 tons she will offer a space-to-guest ratio of 75 GRT-per-passenger becoming one of the most spacious cruise ships ever built. What's more, Silver Nova will be one of the most environmentally friendly, and thanks to her groundbreaking technological solutions, she will propel the ship into a new era of sustainable cruising. It's the Nova way to travel. S.A.L.T. Chef's Table Prepare for an intimate and interactive dining experience like no other at the S.A.L.T. Chef's Table. Indulge in a choreographed menu of small plates highlighting regional flavours and star ingredients, all accompanied by unique wines and cocktails. Per guest reservation fee of U\$180 (incl. complimentary wine & cocktail pairing). Reservations will be taken exclusively on board Silver Nova. S.A.L.T. Kitchen Are you hungry for something new? Eat your way through the places on your cruise in the S.A.L.T. Kitchen. Enjoy destination-inspired

menus, including the Terrain menu, which offers recipes and flavours specific to the port visited, and the Voyage menu, which draws inspiration from the best flavours of the voyage. Pull up a chair and savour every taste of your cruise in a vibrant and welcoming atmosphere. S.A.L.T. Kitchen is the opportunity for all guests aboard Silver Nova to experience the very lifeblood of their destination. Atlantide Atlantide offers guests our quintessential dining experience. Combining contemporary elegance and hallmark Silversea service, this classic restaurant offers our signature fine dining. Atlantide is one of our best-loved eateries, and on Silver Nova we have given it an updated design. Large picture windows, sophisticated lighting design, plus a warm colour spectrum give Atlantide a blend of high-end and whispered luxury. The menu prides itself on superb ingredients and sublime flavour combinations, from caviar to lobster to gorgeous, melt in the mouth deserts. La Terrazza Our hallmark Italian restaurant is as varied as the food-loving country itself. La Terrazza aboard Silver Nova offers an unparalleled destination dining experience, from its expansive floor-to-ceiling windows to its large, outdoor terrace. Enjoy all the tastes of the different regions, including the best homemade pasta, fresh antipasto, bowls of steaming risotto, hearty ragu and delicious tiramisu. Be sure to try one of the bold wines from the cellar, to wash it all down. La Dame Indulge in new epitome of French fine dining aboard Silver Nova, where culinary heritage meets modern innovation. Immerse yourself in an exquisite gastronomic experience showcasing deep, balanced flavours, from curated tasting menus to a la carte selections paired with thoughtfully curated wine selection. Per guest reservation fee of



[www.small-cruise-ships.com](http://www.small-cruise-ships.com)

**01432 507 280** (within UK)

[info@small-cruise-ships.com](mailto:info@small-cruise-ships.com) | [small-cruise-ships.com](http://small-cruise-ships.com)



## The Small Cruise Ship Collection

[www.small-cruise-ships.com](http://www.small-cruise-ships.com)

[small-cruise-ships.com](http://small-cruise-ships.com)

[info@small-cruise-ships.com](mailto:info@small-cruise-ships.com)

US\$160 (incl. complimentary wine pairing). Kaiseki Experience the harmony of flavours and aesthetics with our enhanced Kaiseki dining experience. Delight in the fusion of Washoku's culinary heritage and health benefits, where each meticulously crafted dish is a work of art. Explore the depth and diversity of Japanese spirits with our exclusive selection of sake and Japanese whiskeys or savour a refreshing alternative from our delightful tea selection or cocktails. Per guest reservation fee of US\$80 (incl. complimentary sake, Japanese whiskeys or TWG tea and tea cocktails selection). Silver Note Where do you go if you want great food and a brilliant atmosphere in a relaxed and sophisticated setting? Silver Note of course! Harkening back to the old school days of dinner and dancing, this venue embodies a feeling of fun and sense of glamour that is unequalled in the industry. Jazz bands and soul singers play live as you sample delicate tapas style dishes with a gourmet twist. We guarantee a superlative night of entertainment in the gorgeously designed dinner venue. The Grill Silversea's much-loved casual dining restaurants serves a delectable range of burgers and salads by day, and turns into our famous Hot Rocks table BBQ concept by night. Found in our brand new eating venue The Marquee, The Grill is quite simply, the best place to eat between sea and sky. If you like flavoursome meals cooked to perfection, a casual laid back atmosphere and OMG views, then The Grill is the answer to your prayers. Spaccanapoli Nothing says Italy quite as well as a hot, fresh pizza. Spaccanapoli is a slice of Naples, where you'll taste deliciously thin, freshly made pizzas, topped with creamy mozzarella and minimalist toppings. The light and airy pizzeria forms part of our new al-fresco eatery The Marquee, and is the perfect choice for diners who want to be dazzled by our talented pizzaiolos spinning the dough in the open-air kitchen. Whether you want a light lunch or to share a slice with friends over an

aperitivo, it's always the right time for Spaccanapoli. The Pool Deck Enjoy a reimagined space where you can relax, refresh and rejuvenate on decks 10 and 11. Ample sunbeds for everyone, more space than ever before and the largest pool in the fleet - which offers exceptional 270° unhampered views - are just the beginning. The upper level sun deck is perfectly placed for those who want a quieter space to relax, and still enjoy those incredible, expansive views that are the hallmark of Silver Nova. But it is The Cliff Whirlpool, an infinity edge, glass fronted whirlpool, that really makes The Pool Deck something special. The Dusk Bar With an emphasis on the destination, panoramic views connects you with the world beyond on The Dusk Bar. This superb open-air sky bar provides plenty of space for guests to enjoy a pre or post dinner drink, while drinking in the jaw dropping 270-degree, panoramic views from the stern. The Dusk Bar's blessed combination of idyllic atmosphere and lovely drinks will guarantee to tick your boxes time after time. Whether you're enjoying a Spritz in South America, a cocktail in the Caribbean or a night cap in the Mediterranean, we think The Dusk Bar's unobstructed views give you a new perspective on sunsets at sea. The Marquee The expansive, attractive Marquee houses two of our greatest dining successes. Thanks to Silver Nova's groundbreaking asymmetrical design, we have been able to create an exciting new al fresco dining venue. The Marquee incorporates both The Grill and Spaccanapoli—two of Silversea's existing signature venues, which offer guests our trademark 'hot rocks' culinary concept as well as what are surely the best pizzas at sea. The Marquee will welcome guests in a relaxed atmosphere, serving casual fare by day and dinner under the stars by night. Arts Cafe The Arts Cafe offers a cultural setting for eating, drinking and socialising, as well as a chance to lose yourself while reading up on all your favourite artists and art.



[www.small-cruise-ships.com](http://www.small-cruise-ships.com)

**01432 507 280** (within UK)

[info@small-cruise-ships.com](mailto:info@small-cruise-ships.com) | [small-cruise-ships.com](http://small-cruise-ships.com)





## The Small Cruise Ship Collection

[www.small-cruise-ships.com](http://www.small-cruise-ships.com)



[small-cruise-ships.com](http://small-cruise-ships.com)

[info@small-cruise-ships.com](mailto:info@small-cruise-ships.com)

Enjoy healthy snacks and smoothies plus hot and cold drinks, juices, pastries and sandwiches in a light and airy space. Pop in for a late breakfast or afternoon snack, along with real Italian espresso plus a great range of tea. S.A.L.T. Bar Nothing says authentic experience better than Silver Nova's S.A.L.T. Bar. Get a taste for the authentic and settle down to enjoy locally-inspired cocktails and drinks. How can you go wrong with a Rum Punch in Barbados, a Pastis over ice in Marseille or a Pisco Sour in Lima? Nothing unites new faces and old friends in quite the same way. Be inspired to find your perfect locally-inspired beverage at the S.A.L.T. Bar and let in the colour and flavours of your journey rush in. S.A.L.T. Lab Welcome to the S.A.L.T. Lab, an interactive space where guests can deep-dive into local culinary heritage and techniques. Join our talented chefs and learn how your region's food is central to its culture. Engage in your destination through workshops, lectures and cooking demonstrations for an authentic souvenir not available in any shop. The S.A.L.T. Lab is not just about food and flavour; it is a unique place where holistic destination immersion gives an entirely new dimension to travelling. This is where the magic happens! The Shelter The Shelter is our newest pre and post dinner cocktail venue. Settle in amid an intimate and elegant setting, resplendent with sophisticated lighting, inviting sofas and stunning wraparound bar. Strategically located on deck three, the atmospheric hideaway opens onto the Atrium, creating an openness and connection to the other neighbouring venues. We promise you'll fall in love with one of the best bars on board while our talented team of mixologists mix and shake our range of signature and bespoke cocktails. With it is the perfect destination, warm smiles and legendary Silversea service, get set for unforgettable nights in The Shelter. Dolce Vita Our main bar has been newly reimagined for Silver Nova! Dolce

Vita has of course kept her legendary charm, inspired cocktails, stylish decor and comfortable seating, but a central bar now means the warm ambience is better than ever! Oozing Italian glamour, Dolce Vita is a relaxed, refined bar with a nightly piano player playing all your favourite tunes. Perfect for pre-dinner aperitivi, or even a post-dinner cocktail, Dolce Vita is truly the beating heart of social life on board. Panorama Lounge From early morning to late at night, the Panorama lounge offers everything you could wish for. A peaceful retreat that is the perfect place to break away to, a social place to meet and greet old friends, or an evening venue to partake in a cocktail as you sit back and watch the world go by. Sink into the plush seats and come evening, enjoy listening to the gentle sounds of a pianist, or the invigorating beats of our in-house DJ. Connoisseur's Corner Our smoking lounge aboard Silver Nova is our latest venue where cigar-lovers can buy and sample some of the world's finest Havanas, Cohibas, Partagas, Montecristos, Ramon Allones and Bolivars. Combining all the elements of cigar culture both indoors and on its stylish terrace, the Connoisseur's Corner is where aficionados can meet and mingle to share their iconic passion. Observation Lounge Set on the highest level at the very top of the ship, this is a quiet space for reading and reflection while being dazzled by the undulating seascapes that are constituent to life on board. Borrow a book from the in-house library, read the papers or just embrace the tranquillity of being at sea. The Venetian Lounge The grandeur and magic of music and theatre. The experience of being transported by performance. That satisfying feeling of seeing an evening show ... Welcome to Venetian Lounge, a place where the arts of theatre and music meet with full-scale productions and feature films. Paying tribute to a golden age of glamour, Venetian Lounge offers belle-epoque style cabaret seating, with



The Small Cruise Ship Collection

[www.small-cruise-ships.com](http://www.small-cruise-ships.com)

**01432 507 280** (within UK)

[info@small-cruise-ships.com](mailto:info@small-cruise-ships.com) | [small-cruise-ships.com](http://small-cruise-ships.com)



## The Small Cruise Ship Collection

[www.small-cruise-ships.com](http://www.small-cruise-ships.com)

[small-cruise-ships.com](http://small-cruise-ships.com)

[info@small-cruise-ships.com](mailto:info@small-cruise-ships.com)

intimate tables and chairs subtly placed between the rows of comfortable tiered banquettes. As the stage lights are dimmed, soak up the atmosphere, relax and enjoy a night of dazzling sights and sounds. Atrium Located on deck 4, the Atrium is the beating heart of Silver Nova. Inspired by Roman architecture, The Atrium magnificent windows floods our central meeting areas with abundant natural light. The area is home to both the Arts Cafe and The Shelter, as well as main service areas such as the Reception, Shore Concierge and Future Cruise Sales. The Atrium's enormous glass wall stretches over two decks, guaranteeing a deep connection with your destination whether at sea or docked in port. Boutique Exceptional shopping experiences do not end in the cosmopolitan cities we visit. Silversea's striking new shipboard boutiques, reimagined and redesigned are stunning modern design spaces befitting the finest creations from legendary designers. Carefully selected partners onboard Silversea's duty-free boutiques offers our guests a carefully curated selection of cutting edge fashions, jewellery, accessories, fine perfumes, cosmetics and Silversea Logo collection all at duty-free prices. Otium Spa Finding relaxation is one the of the principle aims of taking a cruise, so why not join us in the Otium Spa for guaranteed indulgence? Turn off your phone, slip on your robe and get ready for a bit of me time. Whether you need to unwind with a massage, perk up your skin with a facial or work up a sweat in sauna and steam room, Otium Spa offers the very latest in beauty therapy. Make every day a special occasion in Otium Spa. Casino Let the fun begin! Channel your inner James Bond and enjoy a flutter at a variety of table games including American Roulette, Blackjack and Poker as Silver Nova glides silently through the waves. An assortment of multi-game, multi-denominational reel and video slot machines are also available. Prepare yourself for a luxurious

and exhilarating experience with every turn of a card and spin of the wheel. Game on! Fitness Centre With state of the art Technogym® equipment, free weights and speciality classes, the Fitness Centre brings together elite design with programs that are specifically created for your body type and needs. With personal trainers available for individual sessions, training here is more a five-star experience for all levels of fitness and experience. And with the best view that you'll ever get whilst working out, there are definitely no



more excuses ...



The Small Cruise Ship Collection

[www.small-cruise-ships.com](http://www.small-cruise-ships.com)

**01432 507 280** (within UK)

[info@small-cruise-ships.com](mailto:info@small-cruise-ships.com) | [small-cruise-ships.com](http://small-cruise-ships.com)





# The Small Cruise Ship Collection

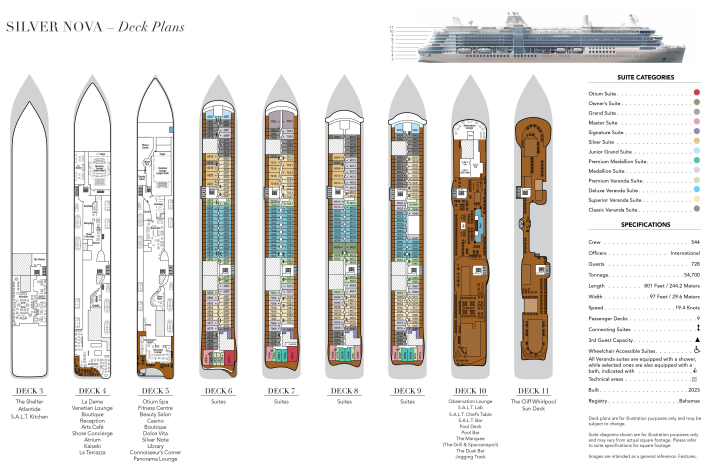
www.small-cruise-ships.com

small-cruise-ships.com

info@small-cruise-ships.com

## INSIDE YOUR SHIP

### SILVER NOVA – Deck Plans



#### SUITE CATEGORIES

Owner Suite	1
Grand Suite	2
Master Suite	3
Signature Suite	4
Silver Suite	5
Junior Grand Suite	6
Premium Medallion Suite	7
Medallion Suite	8
Premium Veranda Suite	9
Deluxe Veranda Suite	10
Superior Veranda Suite	11
Classic Veranda Suite	12

#### SPECIFICATIONS

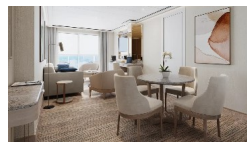
Crew	544
Officers	International
Captain	720
Stewards	36,700
Length	307 Feet / 242.3 Meters
Width	97 Feet / 29.6 Meters
Speed	19.4 Knots
Passenger Decks	9
Convenience Deck	1
24/7 Guest Concierge	1
Wheelchair Accessible Suite	1

Deck plans and the illustration represent only and may be subject to change.  
All staterooms are equipped with a shower, and the selected ones are also equipped with a hot tub. Individual suite features may vary.  
Images are intended as a general reference. Features, equipment and specifications are subject to change without notice.

### Classic Veranda



### Grand 1 Bedroom



### Junior Grand 2 Bedroom

### Medallion

### Owner 1 Bedroom

### Premium Medallion

### Signature

### Deluxe Veranda

### Junior Grand 1 Bedroom

### Master

### Otium

### Owner 2 Bedroom

### Premium Veranda

### Silver



## The Small Cruise Ship Collection

[www.small-cruise-ships.com](http://www.small-cruise-ships.com)

[small-cruise-ships.com](http://small-cruise-ships.com)

[info@small-cruise-ships.com](mailto:info@small-cruise-ships.com)

## PRICING

17-Jan-2027 to 08-Feb-2027

Grand 1 Bedroom	£31855 GBP pp
Master	£29555 GBP pp
Signature	£27155 GBP pp
Silver	£24005 GBP pp
Junior Grand 1 Bedroom	£23105 GBP pp
Premium Medallion	£21855 GBP pp
Premium Veranda	£18555 GBP pp
Owner 2 Bedroom	£58255 GBP pp
Classic Veranda	£16305 GBP pp
Deluxe Veranda	£18055 GBP pp
Medallion	£19855 GBP pp
Junior Grand 2 Bedroom	£37755 GBP pp
Owner 1 Bedroom	£41555 GBP pp
Superior Veranda	£17055 GBP pp
Otium	£43855 GBP pp



The Small Cruise Ship Collection

[www.small-cruise-ships.com](http://www.small-cruise-ships.com)

01432 507 280 (within UK)

[info@small-cruise-ships.com](mailto:info@small-cruise-ships.com) | [small-cruise-ships.com](http://small-cruise-ships.com)