



## 22 DAYS LUXURY TRANSATLANTIC CRUISE - YOKOHAMA TO SEATTLE

From the Land of the Rising Sun - in the blooms of spring - to the Last Frontier of Alaska, join us for an incredible three-week, ocean-spanning journey. Futuristic Tokyo serves as the starting point before visiting Miyako, home to one of Japan's most scenic white sand beaches. Soon, it's time to revel in relaxation on an oceanic scale as we cross the Pacific, gaining an extra day of indulgence along the way. Alaska's wild wonders and fjord-carved scenery await.



### ITINERARY

Days 0 - 1 - Pre Cruise & Yokohama (Tokyo)

- \_ \*\*Pre Cruise Benefits\*\* \_
- \_ \*\*Private Executive Transfers\*\* \_
- \_ \*\*International flights - Economy class\*\* \_
- \_ \*\*or Business Class upgrade\*\* \_



## The Small Cruise Ship Collection

[www.small-cruise-ships.com](http://www.small-cruise-ships.com)

[small-cruise-ships.com](http://small-cruise-ships.com)

[info@small-cruise-ships.com](mailto:info@small-cruise-ships.com)

you.

### Day 2 - Day at sea

Days at sea are the perfect opportunity to relax, unwind and catch up with what you've been meaning to do. So whether that is going to the gym, visiting the spa, whale watching, catching up on your reading or simply topping up your tan, these blue sea days are the perfect balance to busy days spent exploring shore side.

### Day 3 - Miyako, Iwate

Set on the eastern coast in Japan's Iwate prefecture, Miyako promises stunning scenery and Jorman history in equimeasure. The coastal city of around 50,000 inhabitants is almost 600 km (372 miles) from Tokyo, but boasts one of the finest beaches in Japan, as well as a treasure trove of succulently fresh seafood restaurants. While travellers to Miyako might arrive expecting the usual amalgam of cultural attractions and high-tech wizardry, they will leave with memories of one of the greatest garden cities they have ever experienced. During the Edo period (1603-1868) the town was once considered as Japan's main seaport, and it is still an important port today with a thriving fishing industry. Mother Nature really does come into her own in Miyako. The city is bordered by the vast Sanriku Fukk National Park, one of the National Parks of Japan. Sanriku Fukk stretches for 180 km (111 miles) along the coast and homes a wonderful variety of flora and fauna, including groves of Japanese red pine, rhododendrons and Rosa rugosa. Numerous bird species, including the black-tailed gull and shearwater call

\_ \*\*Airport transfers\*\* \_  
\_ \*\*Hotel\*\* \_

Flying as far under the radar as Japan's second-biggest city possibly can, only a 30-minute train ride separates Yokohama from Tokyo's metropolis. Sat a little further to the south of the Bay of Tokyo than the Japanese capital, Yokohama is a place to enjoy waterfront strolls and the warmest of welcomes, as you arrive and acclimatise to this city in the bustling heart of Japan. Step into this ocean of urbanity, where major cities merge and blend together, and it's hard to square Yokohama's fishing village origins with the vast urban sprawl that you encounter today. An outward-looking place, Yokohama was one of the first to open its harbour to international trade, leading to a rapid transformation from village to big city. The opening of the ports drew many Chinese traders to the bay, and Yokohama houses the country's biggest Chinatown - a colourful and historic explosion of Chinese shops and more than 250 eateries. Landmark Tower is hard to miss, puncturing the sky as Japan's second-largest building, it looks out over the water and rises before the distant loom of Mount Fuji. The towering ferris wheel nearby is one of the world's tallest, and flashes with colour amid the glowing skyline at night. Enjoy breezy strolls along the lively waterfront, with heritage ships, museums and tempting restaurants bordering the sparking bay's waters. Offering the excitement that only landing on Japanese shores can offer, Yokohama is a great starting point for any adventure to this land of culture, colour and grace. Whether you want to venture onwards to Tokyo's neon-bathed wonders, see Mount Fuji up close, or find peace and tranquillity in Kyoto's majestic temples and shrines, Yokohama opens up the best of Japan's wonders to

The Small Cruise  
Ship Collection  
[www.small-cruise-ships.com](http://www.small-cruise-ships.com)

01432 507 280 (within UK)

[info@small-cruise-ships.com](mailto:info@small-cruise-ships.com) | [small-cruise-ships.com](http://small-cruise-ships.com)





## The Small Cruise Ship Collection

[www.small-cruise-ships.com](http://www.small-cruise-ships.com)

[small-cruise-ships.com](http://small-cruise-ships.com)

[info@small-cruise-ships.com](mailto:info@small-cruise-ships.com)

the park home. Butterflies float gently on the breeze and hummingbirds sail like darts through the trees. What's more, bird lovers will undoubtedly love that the nearby Hidejima Island and Sanganjima Island are the only breeding grounds in Japan for the band-rumped storm-petrel.

### Day 4 - Aomori

From fiery festivals to spectacular mountain scenery, soaring temples to castles surrounded by cherry blossom blooms, Aomori is one of Japan's most enchanting destinations. Framed by dark peaks clad with dense forestry, the city enjoys a picturesque location on Japan's main island Honshu. While there are gorgeous pink tinted parks, tiered castles and towering Buddha statues to explore, the Aomori Prefecture's capital is perhaps best known for the summer festival of fire that lights it up each year. Lavish illuminated floats fill the streets during Nebuta Matsuri festival, as dancing locals wave flickering lanterns through the night sky - and drummers pound out pulsating rhythms. Nebuta Matsuri has a euphoric and energetic atmosphere which makes it stand out as an unmissable experience compared with some of Japan's more restrained festivals. At other times of the year, places like the stunning Hirosaki Castle bloom with rose-pink cherry blossom, as spring's sunshine clears away winter's plentiful snowfall. The castle's moat, glowing with the pale hue of fallen blossom, is a truly mesmerising sight to behold. Don't worry if you're too late though, you might be able to catch the pink-flush of the apple blossom - which comes slightly later. Extraordinary prehistoric Jomon period history is waiting to be unearthed at the living archaeological site, Sannai-Maruyama Ruins. Or, the untouched

wilderness of UNESCO World Heritage Site Shirakami Sanchi is within reach. This sprawling mass of beech trees covers a third of the Shirakami mountain range, and the dense forestry once blanketed the majority of northern Japan's land. Visit to scratch the surface of this untamed landscape's beauty and see sprawling waterfalls cascading down mountainsides, in a beautiful off-bounds landscape, where black bears roam freely.

### Days 5 - 11 - Day at sea

Days at sea are the perfect opportunity to relax, unwind and catch up with what you've been meaning to do. So whether that is going to the gym, visiting the spa, whale watching, catching up on your reading or simply topping up your tan, these blue sea days are the perfect balance to busy days spent exploring shore side.

### Day 12 - Kodiak Island, Alaska

The domain of grizzlies, brown and black bears, Kodiak Island is a raw, wild, and utterly authentic Alaskan wilderness. The Emerald Isle is the USA's second-largest island, and with a wilderness stretching out over 3,670 square miles, it's a thrilling voyage into the Alaskan unknown. The weather may get a little cloudy at times, but the locals actively welcome a covering of cloud - perhaps partly because the clouds and fog are said to have deterred Japanese attacks during World War II's hostilities. Be sure to bring your camera with you; it's nigh on impossible to take a bad photo of these irresistible vistas - and you'll quickly see why Kodiak Island is the destination of choice for wildlife documentary producers. Cinematic setpieces regularly play out,



## The Small Cruise Ship Collection

[www.small-cruise-ships.com](http://www.small-cruise-ships.com)

[small-cruise-ships.com](http://small-cruise-ships.com)

[info@small-cruise-ships.com](mailto:info@small-cruise-ships.com)

as eagles soar over expansive sweeps of fir-tree forested mountains and still lakes, releasing occasional piercing calls. Some of the animal kingdom's most feared and revered creatures call Kodiak Island home, and your first sight of a bear reaching a massive paw into the water, or treading through a gently burbling stream, will live with you forever. Soar in a seaplane to track the bears with an expert guide. Masters of disguise, it often takes a trained eye to spot the bears in their natural habitats. Brush up on the skills you'll need in advance, with a read of our bear watching blog. [Insert blog: 7 tips for bear watching in Alaska]. The waters of Kodiak Island are also home to some of the world's most productive fishing. Try out your own skills, or accompany a seafaring fishing vessel, to witness life on the waves first-hand, as they plunder the depths of the ocean.

### [Day 13 - Day at sea](#)

Days at sea are the perfect opportunity to relax, unwind and catch up with what you've been meaning to do. So whether that is going to the gym, visiting the spa, whale watching, catching up on your reading or simply topping up your tan, these blue sea days are the perfect balance to busy days spent exploring shore side.

### [Day 14 - Sitka \(Alaska\)](#)

A distant land of bears, wild landscapes and icy adventures, sail between glorious islands and witness the diverse wildlife of the Inside Passage. Eagles watch over the scenery overhead, while whales and sea lions add glorious weight to the animal life that

thrives and thrashes in these icy seas. With a quintet of Pacific salmon species filling the rich rivers and waterways with life, settle back to enjoy the show, as Sitka's immense setpieces play out before you. You might notice the onion-shaped dome atop St. Michael's Church - a relic of the area's Russian history. Sitka formed a part of the Russian Empire until a deal was struck in 1867, and the territory was sold to the United States, with the handover ceremony taking place here in Sitka. The native Tlingit culture is an important presence, and elaborate totem poles rocket up in Sitka National Historical Park. They mark the battleground of 1804, when the indigenous people clashed fiercely with the Russians. The snow-capped peak of the dormant volcano, Mount Edgecumbe, draws understandable comparisons with Mount Fuji's symmetrical cone. Climb to thrilling heights, as you arrive on Kruzof Island, and enjoy richly spellbinding views of the scattered Pacific islands, while hiking. Whether you want to spend your time flying above snow-dusted mountain ridges, fishing for colossal King salmon, or savouring Northwest frontier cuisine in waterfront restaurants, there's no shortage of ways to experience Sitka's natural wonders.

### [Day 15 - Juneau \(Alaska\)](#)

Extraordinary adventures amid nature's wildest staging await at Juneau. The majestic Mendenhall Glacier sprawls down from Juneau Icefield, which provides an icy cap to the area's rip-roaring scenery. State capitals simply don't get more dramatic than this isolated, remote city lost amid the Alaskan wilds. Even the roads eventually peter out, absorbed by forests and viewpoints, firmly underlining the isolated location, hidden behind an impenetrable wall of rigid mountains. Rise up to

The Small Cruise  
Ship Collection  
[www.small-cruise-ships.com](http://www.small-cruise-ships.com)

**01432 507 280** (within UK)

[info@small-cruise-ships.com](mailto:info@small-cruise-ships.com) | [small-cruise-ships.com](http://small-cruise-ships.com)





## The Small Cruise Ship Collection

[www.small-cruise-ships.com](http://www.small-cruise-ships.com)

[small-cruise-ships.com](http://small-cruise-ships.com)

[info@small-cruise-ships.com](mailto:info@small-cruise-ships.com)

Mount Roberts Tramway's viewpoint, to see the city swallowed by this most colossal backdrop. This is glacier country, and no fewer than 38 ice flows branch off from the main Juneau Icefield, slowly carving out valleys in their wakes. Taku Glacier cuts deep into the mountain, forming a colossal sculpture that is one of the world's thickest - almost a mile deep. Mendenhall Glacier cascades down, just 12 miles away from downtown, terminating in its own lake and visitor centre. With 1,500 square miles of ice field to explore, one of the best ways to take in the magnitude and majesty of this epic ice sculpture is to hold on tight as the propeller whirs, and you soar into the skies on an exhilarating sightseeing flight. Cruising up above the icy world that fills in these serrated mountain peaks is a once in a lifetime experience. The animals that inhabit the Southeast Alaskan wilds are just as inspiring as the landscapes - families of bears patrol the riverbanks, bald eagles survey the surroundings watchfully, and Pacific humpbacks migrate from Hawaii's waters to feast on the krill rich, icy waters. Fish for huge catches, power across the ice in a snow-sledge, or kayak just below glaciers. However you choose to immerse yourself in it, Juneau's incredible outdoor adventures never disappoint.

Day 16 - Wrangell, Alaska

Alaska's majestic natural spectacles play out before you in Wrangell. The pure, gushing water is one of Alaska's most prized shows, and there are few better places to witness it than Wrangell - a town set amid the fractured lands of the legendary Inside Passage. Having experienced three gold rushes in its history, the immense scenery and thrilling wildlife is an enduring treasure for visitors.

The mighty Stikine River has been the lifeblood to this region for centuries, cutting through pine-cloaked valleys for 400 miles before unloading into the frigid ocean. If the tides are friendly, why not explore via jet-boat and head out to the abundant waters of Anan Creek, an ancient fishing site of the Tlingit people. Visit waters thick with lithe salmon - a bounty that tempts much of the wildlife from the confines of their forest shelters. The Anan Wildlife Observatory provides the ultimate viewing point to watch the salmon leaping from the cascading water. Look out from the cover for bears, salmon and bald eagles. Try your own luck fishing in Wrangell's waters, which are teeming with a rich bounty. Clomp through rich forests - beside waterfalls and waterways - on hair-raising hikes, which open out to glorious waterfront vistas. The aptly named Petroglyph Beach is the place to see amazing petroglyph artworks carved into the rocks. Or tour Shakes Island's Tribal House, where you can see a replica of a Tlingit community house. The house is surrounded by fascinating, original totem poles, and a wooden footbridge conveniently links the island with Wrangell's harbour.

Day 17 - Ketchikan, Alaska

The Salmon Capital of the World is a thrilling introduction to wild and wonderful Alaska, sitting at the southern gateway to the Inside Passage's famed route of larger than life scenery. Cruise through the waters, or soar just above in a sightseeing plane, to take in the full majesty of the magnificent Misty Fjords National Monument. Home to grizzly and black bears - as well as cruising whales and swimming seals - the wildlife spotting opportunities

The Small Cruise Ship Collection  
[www.small-cruise-ships.com](http://www.small-cruise-ships.com)

**01432 507 280** (within UK)

[info@small-cruise-ships.com](mailto:info@small-cruise-ships.com) | [small-cruise-ships.com](http://small-cruise-ships.com)



## The Small Cruise Ship Collection

[www.small-cruise-ships.com](http://www.small-cruise-ships.com)

[small-cruise-ships.com](http://small-cruise-ships.com)

[info@small-cruise-ships.com](mailto:info@small-cruise-ships.com)

in this majestic corner of the world are nothing short of spectacular. Towered over by steep banks and valley walls, Ketchikan's ocean inlet is peppered with granite stacks, looming from the waters. Surrounded by glorious landscapes, head to the Alaska Rainforest Sanctuary, which is alive with bald eagles, black bears and remarkable, thick, yellow banana slugs - the squeamish are advised to keep well clear. Visit Ketchikan's Heritage Centre, where a collection of intricately carved totem poles rise up, preserving the heritage of the indigenous Tlingit and Haida people of these lands. Ketchikan has the world's largest collection, and some of the oldest and most precious totems in existence. This frontier city hasn't always been so wholesome, however. See the colourful historic street that is built on crooked stilts over Ketchikan Creek, which has a crude history as the main red-light district in the city. The brothels closed in the 1950s, but you can explore this legendarily seedy past at Dolly's House - a brothel turned museum. See the Married Man trail, a historical route used to enter Creek Street away from prying eyes.

### Day 18 - Day at sea

Days at sea are the perfect opportunity to relax, unwind and catch up with what you've been meaning to do. So whether that is going to the gym, visiting the spa, whale watching, catching up on your reading or simply topping up your tan, these blue sea days are the perfect balance to busy days spent exploring shore side.

### Day 19 - Victoria, British Columbia

Set on the southern tip of Vancouver Island (although nowhere near Vancouver the city), Victoria (the city) is nowhere near Victoria Island. Confused? Victoria may be Vancouver's smaller sister in size but what it lacks in bright light big city bustle, is more than made up for by its fantastic foodie scene, historical background and its glorious natural surroundings. What's more, stop any local and you'll find a charming population, full of friendliness and pride for their city. Easily walkable, Victoria is full of blooming gardens, coastal paths, engaging museums, and beautifully restored 19th-century architecture. Pods of friendly whales have been known to visit the harbour, attracted by the fertile waters. Three resident pods of Orcas live in the nearby Puget Sound, Gulf and San Juan Islands. Nothing beats the feeling of standing on the viewing deck, binoculars in hand, listening to the eerie communication of the beautiful black and white beasts. Discovered by Captain James Cook in the 18th century, Victoria - and Vancouver Island - had long been home to many indigenous families. The city retains its roots to its First Nation culture, thousands of examples of which can be found in the spectacular collection housed at The Royal BC Museum. People flocked to the area after gold was discovered in 1858, bringing adventurers from as far afield as Australia. This diversity of population was further cemented in the 19th century when thousands of migrant workers were brought in to build the railway.

### Day 20 - Seattle (Washington)

Even if you think you know Seattle, we guarantee that by your next visit, the city will have changed. Because that is the nature

The Small Cruise Ship Collection  
[www.small-cruise-ships.com](http://www.small-cruise-ships.com)

**01432 507 280** (within UK)

[info@small-cruise-ships.com](mailto:info@small-cruise-ships.com) | [small-cruise-ships.com](http://small-cruise-ships.com)





small-cruise-ships.com

info@small-cruise-ships.com

of Seattle, always marching unashamedly towards the future. This is the city that gave us Starbucks, Nirvana and Fraser (plus numerous other celebrities from music legends to retail giants). It's a city that knows how to surf the next wave with aplomb and grace. It is the city of the future. That is not to say that it doesn't treat its past with respect. Settled by five pioneer families in 1851, the town quickly grew after the Northern Railway was extended to meet the coast in 1893. The Gold Rush of 1897 sealed the city as one of the great places on the west coast. The history of the city's 100 Mercer girls - girls that were brought back by pioneer Asa Mercer who deemed the city had shortage of marriageable women - is just one of the quirky facts that makes the Seattle impossible not to love. Seattle is the largest city in the state of Washington, yet there is a village vibe that is uncommon in metropolises. If you truly want to enjoy the unique hybrid of tradition and progression, then take a tour of Pike Place, Seattle's famous farmer's market. This was where the term "locavore" was coined, and local producer-customer meetings are not only commonplace, but are encouraged. Go hungry as the huge indoor market is laden with tasty options of food options, from fresh vegetables and fruit from to prepared food that can be eaten whilst enjoying a great view of the bay.

Itineraries are subject to change.

#### Day 21 - Post Cruise

- \_ **\*\*Post Cruise Benefits\*\*** \_
- \_ **\*\*Airport transfers\*\*** \_
- \_ **\*\*International flights - Economy class\*\*** \_
- \_ **\*\*or Business Class upgrade\*\*** \_
- \_ **\*\*Private Executive Transfers\*\*** \_

Please note:



## The Small Cruise Ship Collection

[www.small-cruise-ships.com](http://www.small-cruise-ships.com)

[small-cruise-ships.com](http://small-cruise-ships.com)

[info@small-cruise-ships.com](mailto:info@small-cruise-ships.com)

## YOUR SHIP: SILVER NOVA

**YOUR SHIP:**

**Silver Nova**

**VESSEL TYPE:**

**LENGTH:**

**PASSENGER CAPACITY:**

**BUILT/REFURBISHED:**

Silver Nova is more than a new ship, it is a Nova way of luxury travel. This modern and beautiful vessel will debut in summer 2023, and is a home away from home for up to 728 guests. Silver Nova's innovative asymmetrical design introduces the world like never before, offering an immersive destination experience to our guests. With a gross tonnage of 54,700 tons she will offer a space-to-guest ratio of 75 GRT-per-passenger becoming one of the most spacious cruise ships ever built. What's more, Silver Nova will be one of the most environmentally friendly, and thanks to her groundbreaking technological solutions, she will propel the ship into a new era of sustainable cruising. It's the Nova way to travel. S.A.L.T. Chef's Table Prepare for an intimate and interactive dining experience like no other at the S.A.L.T. Chef's Table. Indulge in a choreographed menu of small plates highlighting regional flavours and star ingredients, all accompanied by unique wines and cocktails. Per guest reservation fee of U\$180 (incl. complimentary wine & cocktail pairing). Reservations will be taken exclusively on board Silver Nova. S.A.L.T. Kitchen Are you hungry for something new? Eat your way through the places on your cruise in the S.A.L.T. Kitchen. Enjoy destination-inspired

menus, including the Terrain menu, which offers recipes and flavours specific to the port visited, and the Voyage menu, which draws inspiration from the best flavours of the voyage. Pull up a chair and savour every taste of your cruise in a vibrant and welcoming atmosphere. S.A.L.T. Kitchen is the opportunity for all guests aboard Silver Nova to experience the very lifeblood of their destination. Atlantide Atlantide offers guests our quintessential dining experience. Combining contemporary elegance and hallmark Silversea service, this classic restaurant offers our signature fine dining. Atlantide is one of our best-loved eateries, and on Silver Nova we have given it an updated design. Large picture windows, sophisticated lighting design, plus a warm colour spectrum give Atlantide a blend of high-end and whispered luxury. The menu prides itself on superb ingredients and sublime flavour combinations, from caviar to lobster to gorgeous, melt in the mouth deserts. La Terrazza Our hallmark Italian restaurant is as varied as the food-loving country itself. La Terrazza aboard Silver Nova offers an unparalleled destination dining experience, from its expansive floor-to-ceiling windows to its large, outdoor terrace. Enjoy all the tastes of the different regions, including the best homemade pasta, fresh antipasto, bowls of steaming risotto, hearty ragu and delicious tiramisu. Be sure to try one of the bold wines from the cellar, to wash it all down. La Dame Indulge in new epitome of French fine dining aboard Silver Nova, where culinary heritage meets modern innovation. Immerse yourself in an exquisite gastronomic experience showcasing deep, balanced flavours, from curated tasting menus to a la carte selections paired with thoughtfully curated wine selection. Per guest reservation fee of

The Small Cruise Ship Collection  
[www.small-cruise-ships.com](http://www.small-cruise-ships.com)

**01432 507 280** (within UK)

[info@small-cruise-ships.com](mailto:info@small-cruise-ships.com) | [small-cruise-ships.com](http://small-cruise-ships.com)





## The Small Cruise Ship Collection

[www.small-cruise-ships.com](http://www.small-cruise-ships.com)

[small-cruise-ships.com](http://small-cruise-ships.com)

[info@small-cruise-ships.com](mailto:info@small-cruise-ships.com)

US\$160 (incl. complimentary wine pairing). Kaiseki Experience the harmony of flavours and aesthetics with our enhanced Kaiseki dining experience. Delight in the fusion of Washoku's culinary heritage and health benefits, where each meticulously crafted dish is a work of art. Explore the depth and diversity of Japanese spirits with our exclusive selection of sake and Japanese whiskeys or savour a refreshing alternative from our delightful tea selection or cocktails. Per guest reservation fee of US\$80 (incl. complimentary sake, Japanese whiskeys or TWG tea and tea cocktails selection). Silver Note Where do you go if you want great food and a brilliant atmosphere in a relaxed and sophisticated setting? Silver Note of course! Harkening back to the old school days of dinner and dancing, this venue embodies a feeling of fun and sense of glamour that is unequalled in the industry. Jazz bands and soul singers play live as you sample delicate tapas style dishes with a gourmet twist. We guarantee a superlative night of entertainment in the gorgeously designed dinner venue. The Grill Silversea's much-loved casual dining restaurants serves a delectable range of burgers and salads by day, and turns into our famous Hot Rocks table BBQ concept by night. Found in our brand new eating venue The Marquee, The Grill is quite simply, the best place to eat between sea and sky. If you like flavoursome meals cooked to perfection, a casual laid back atmosphere and OMG views, then The Grill is the answer to your prayers. Spaccanapoli Nothing says Italy quite as well as a hot, fresh pizza. Spaccanapoli is a slice of Naples, where you'll taste deliciously thin, freshly made pizzas, topped with creamy mozzarella and minimalist toppings. The light and airy pizzeria forms part of our new al-fresco eatery The Marquee, and is the perfect choice for diners who want to be dazzled by our talented pizzaiolos spinning the dough in the open-air kitchen. Whether you want a light lunch or to share a slice with friends over an

aperitivo, it's always the right time for Spaccanapoli. The Pool Deck Enjoy a reimagined space where you can relax, refresh and rejuvenate on decks 10 and 11. Ample sunbeds for everyone, more space than ever before and the largest pool in the fleet - which offers exceptional 270° unhampered views - are just the beginning. The upper level sun deck is perfectly placed for those who want a quieter space to relax, and still enjoy those incredible, expansive views that are the hallmark of Silver Nova. But it is The Cliff Whirlpool, an infinity edge, glass fronted whirlpool, that really makes The Pool Deck something special. The Dusk Bar With an emphasis on the destination, panoramic views connects you with the world beyond on The Dusk Bar. This superb open-air sky bar provides plenty of space for guests to enjoy a pre or post dinner drink, while drinking in the jaw dropping 270-degree, panoramic views from the stern. The Dusk Bar's blessed combination of idyllic atmosphere and lovely drinks will guarantee to tick your boxes time after time. Whether you're enjoying a Spritz in South America, a cocktail in the Caribbean or a night cap in the Mediterranean, we think The Dusk Bar's unobstructed views give you a new perspective on sunsets at sea. The Marquee The expansive, attractive Marquee houses two of our greatest dining successes. Thanks to Silver Nova's groundbreaking asymmetrical design, we have been able to create an exciting new al fresco dining venue. The Marquee incorporates both The Grill and Spaccanapoli—two of Silversea's existing signature venues, which offer guests our trademark 'hot rocks' culinary concept as well as what are surely the best pizzas at sea. The Marquee will welcome guests in a relaxed atmosphere, serving casual fare by day and dinner under the stars by night. Arts Cafe The Arts Cafe offers a cultural setting for eating, drinking and socialising, as well as a chance to lose yourself while reading up on all your favourite artists and art.

The Small Cruise Ship Collection  
[www.small-cruise-ships.com](http://www.small-cruise-ships.com)

01432 507 280 (within UK)

[info@small-cruise-ships.com](mailto:info@small-cruise-ships.com) | [small-cruise-ships.com](http://small-cruise-ships.com)



## The Small Cruise Ship Collection

[www.small-cruise-ships.com](http://www.small-cruise-ships.com)

[small-cruise-ships.com](http://small-cruise-ships.com)

[info@small-cruise-ships.com](mailto:info@small-cruise-ships.com)

Enjoy healthy snacks and smoothies plus hot and cold drinks, juices, pastries and sandwiches in a light and airy space. Pop in for a late breakfast or afternoon snack, along with real Italian espresso plus a great range of tea. S.A.L.T. Bar Nothing says authentic experience better than Silver Nova's S.A.L.T. Bar. Get a taste for the authentic and settle down to enjoy locally-inspired cocktails and drinks. How can you go wrong with a Rum Punch in Barbados, a Pastis over ice in Marseille or a Pisco Sour in Lima? Nothing unites new faces and old friends in quite the same way. Be inspired to find your perfect locally-inspired beverage at the S.A.L.T. Bar and let in the colour and flavours of your journey rush in. S.A.L.T. Lab Welcome to the S.A.L.T. Lab, an interactive space where guests can deep-dive into local culinary heritage and techniques. Join our talented chefs and learn how your region's food is central to its culture. Engage in your destination through workshops, lectures and cooking demonstrations for an authentic souvenir not available in any shop. The S.A.L.T. Lab is not just about food and flavour; it is a unique place where holistic destination immersion gives an entirely new dimension to travelling. This is where the magic happens! The Shelter The Shelter is our newest pre and post dinner cocktail venue. Settle in amid an intimate and elegant setting, resplendent with sophisticated lighting, inviting sofas and stunning wraparound bar. Strategically located on deck three, the atmospheric hideaway opens onto the Atrium, creating an openness and connection to the other neighbouring venues. We promise you'll fall in love with one of the best bars on board while our talented team of mixologists mix and shake our range of signature and bespoke cocktails. With it is the perfect destination, warm smiles and legendary Silversea service, get set for unforgettable nights in The Shelter. Dolce Vita Our main bar has been newly reimagined for Silver Nova! Dolce

Vita has of course kept her legendary charm, inspired cocktails, stylish decor and comfortable seating, but a central bar now means the warm ambience is better than ever! Oozing Italian glamour, Dolce Vita is a relaxed, refined bar with a nightly piano player playing all your favourite tunes. Perfect for pre-dinner aperitivi, or even a post-dinner cocktail, Dolce Vita is truly the beating heart of social life on board. Panorama Lounge From early morning to late at night, the Panorama lounge offers everything you could wish for. A peaceful retreat that is the perfect place to break away to, a social place to meet and greet old friends, or an evening venue to partake in a cocktail as you sit back and watch the world go by. Sink into the plush seats and come evening, enjoy listening to the gentle sounds of a pianist, or the invigorating beats of our in-house DJ. Connoisseur's Corner Our smoking lounge aboard Silver Nova is our latest venue where cigar-lovers can buy and sample some of the world's finest Havanas, Cohibas, Partagas, Montecristos, Ramon Allones and Bolivars. Combining all the elements of cigar culture both indoors and on its stylish terrace, the Connoisseur's Corner is where aficionados can meet and mingle to share their iconic passion. Observation Lounge Set on the highest level at the very top of the ship, this is a quiet space for reading and reflection while being dazzled by the undulating seascapes that are constituent to life on board. Borrow a book from the in-house library, read the papers or just embrace the tranquillity of being at sea. The Venetian Lounge The grandeur and magic of music and theatre. The experience of being transported by performance. That satisfying feeling of seeing an evening show ... Welcome to Venetian Lounge, a place where the arts of theatre and music meet with full-scale productions and feature films. Paying tribute to a golden age of glamour, Venetian Lounge offers belle-epoque style cabaret seating, with

The Small Cruise Ship Collection  
[www.small-cruise-ships.com](http://www.small-cruise-ships.com)

**01432 507 280** (within UK)

[info@small-cruise-ships.com](mailto:info@small-cruise-ships.com) | [small-cruise-ships.com](http://small-cruise-ships.com)





## The Small Cruise Ship Collection

[www.small-cruise-ships.com](http://www.small-cruise-ships.com)

[small-cruise-ships.com](http://small-cruise-ships.com)

[info@small-cruise-ships.com](mailto:info@small-cruise-ships.com)

intimate tables and chairs subtly placed between the rows of comfortable tiered banquettes. As the stage lights are dimmed, soak up the atmosphere, relax and enjoy a night of dazzling sights and sounds. Atrium Located on deck 4, the Atrium is the beating heart of Silver Nova. Inspired by Roman architecture, The Atrium magnificent windows floods our central meeting areas with abundant natural light. The area is home to both the Arts Cafe and The Shelter, as well as main service areas such as the Reception, Shore Concierge and Future Cruise Sales. The Atrium's enormous glass wall stretches over two decks, guaranteeing a deep connection with your destination whether at sea or docked in port. Boutique Exceptional shopping experiences do not end in the cosmopolitan cities we visit. Silversea's striking new shipboard boutiques, reimagined and redesigned are stunning modern design spaces befitting the finest creations from legendary designers. Carefully selected partners onboard Silversea's duty-free boutiques offers our guests a carefully curated selection of cutting edge fashions, jewellery, accessories, fine perfumes, cosmetics and Silversea Logo collection all at duty-free prices. Otium Spa Finding relaxation is one the of the principle aims of taking a cruise, so why not join us in the Otium Spa for guaranteed indulgence? Turn off your phone, slip on your robe and get ready for a bit of me time. Whether you need to unwind with a massage, perk up your skin with a facial or work up a sweat in sauna and steam room, Otium Spa offers the very latest in beauty therapy. Make every day a special occasion in Otium Spa. Casino Let the fun begin! Channel your inner James Bond and enjoy a flutter at a variety of table games including American Roulette, Blackjack and Poker as Silver Nova glides silently through the waves. An assortment of multi-game, multi-denominational reel and video slot machines are also available. Prepare yourself for a luxurious

and exhilarating experience with every turn of a card and spin of the wheel. Game on! Fitness Centre With state of the art Technogym® equipment, free weights and speciality classes, the Fitness Centre brings together elite design with programs that are specifically created for your body type and needs. With personal trainers available for individual sessions, training here is more a five-star experience for all levels of fitness and experience. And with the best view that you'll ever get whilst working out, there are definitely no



more excuses ...

The Small Cruise Ship Collection

[www.small-cruise-ships.com](http://www.small-cruise-ships.com)

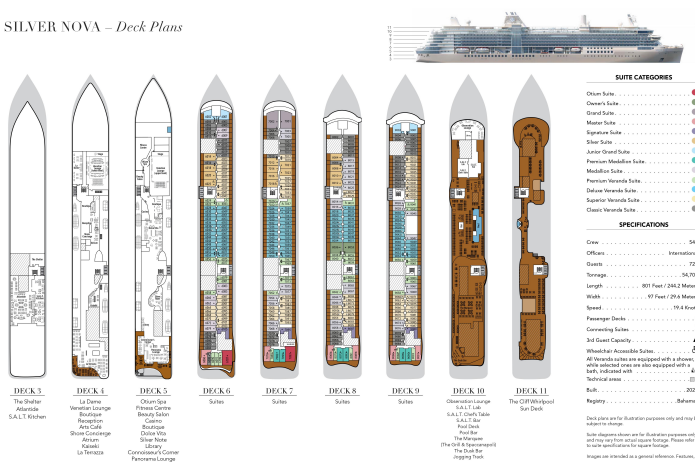
**01432 507 280** (within UK)

[info@small-cruise-ships.com](mailto:info@small-cruise-ships.com) | [small-cruise-ships.com](http://small-cruise-ships.com)

[www.small-cruise-ships.com](http://www.small-cruise-ships.com)

info@small-cruise-ships.com

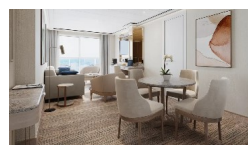
## SILVER NOVA – Deck Plans



### Deluxe Veranda



### Junior Grand 1 Bedroom



Master

## Otium

Owner 2 Bedroom

## Premium Veranda

Silver

**01432 507 280** (within UK)

info@small-cruise-ships.com | **small-cruise-ships.com**





# The Small Cruise Ship Collection

[www.small-cruise-ships.com](http://www.small-cruise-ships.com)

[small-cruise-ships.com](http://small-cruise-ships.com)

[info@small-cruise-ships.com](mailto:info@small-cruise-ships.com)

## PRICING

22-Apr-2026 to 13-May-2026

Master	£16475 GBP pp
Premium Veranda	£11885 GBP pp
Owner 2 Bedroom	£29585 GBP pp
Otium	£19689 GBP pp
Classic Veranda	£11069 GBP pp
Junior Grand 2 Bedroom	£19075 GBP pp
Grand 1 Bedroom	£16629 GBP pp
Premium Medallion	£13415 GBP pp
Owner 1 Bedroom	£18875 GBP pp
Signature	£16065 GBP pp
Silver	£14129 GBP pp
Junior Grand 1 Bedroom	£13719 GBP pp
Superior Veranda	£11225 GBP pp
Medallion	£12755 GBP pp
Deluxe Veranda	£11529 GBP pp