



## 17 DAYS LUXURY AUSTRALIA CRUISE - FREMANTLE TO MELBOURNE

A true Aussie adventure - explore the spectacular southern coastline and Tasmania in style. Join us as we sail from Perth's remote paradise to Melbourne's artsy waterside hub. Meet the continent's famous wildlife, admire sweeping beaches, and wander cities dense with museums, artsy appeal and indigenous culture. Hop between white sand beaches and spectacular coastlines, before spending time beneath the beautiful backdrop of Mount Wellington in Tasmania.



### ITINERARY

Day 1 - Fremantle (Perth), Western Australia

Coming in at number seven on Lonely Planet's list of best places to live, Fremantle has finally begun to shake off the shadow of neighbouring big brother Perth. With just 20 kilometres separating the two cities, Perth, with its happy hippie vibe has long been the big pull for visitors to the region. But Fremantle's colourful past and bright future gives Perth as good as it gets.



## The Small Cruise Ship Collection

[www.small-cruise-ships.com](http://www.small-cruise-ships.com)

[small-cruise-ships.com](http://small-cruise-ships.com)

[info@small-cruise-ships.com](mailto:info@small-cruise-ships.com)

The coastal city has undergone a complete revamp since the America's Cup thrust Fremantle into the spotlight in 1987. Over AUS\$ 1,3 billion has been poured into revamping the city, and the fruits of the city's labour are ripe for picking. Investment in the arts has brought Fremantle to the fore of thriving urban culture, while generous grants for small businesses has led to groovy live-music rooms, hipster bars, boutique hotels, left-field bookshops, craft-beer breweries, Indian Ocean seafood shacks amid the buskers and beaches. If that doesn't not sound like your glass of beer, we guarantee a stroll along the wooden riverside walkway will change your mind. The city also enjoys another, rather different status. Fremantle was one of Australia's penal cities, vestiges of which can still be found in Fremantle Prison. Almost 10,000 convicts were condemned to life imprisonment here between 1850 and 1868, but the prison remained in use until 1991. Today, the memorable sandstone building is a UNESCO World Heritage Site and at just 15 minutes from port is well worth a visit. Just don't forget your get out of jail free card.

### Day 2 - Busselton

Bordering the Indian Ocean, Geographe Bay's Busselton has a Mediterranean style climate. The region features national parks, towering forests, caves, historic lighthouses and some of the best surfing beaches in the country. Other attractions include wineries and micro-breweries in the Margaret River wine region to the south. Busselton's iconic jetty -at over 1.8 km the longest wooden jetty in the southern hemisphere- has an 'Underwater Observatory' that descends 8 meters to the ocean floor via a spiral staircase to see tropical and sub-tropical corals, sponges, fish and invertebrates.

### Day 3 - Day at sea

Days at sea are the perfect opportunity to relax, unwind and catch up with what you've been meaning to do. So whether that is going to the gym, visiting the spa, whale watching, catching up on your reading or simply topping up your tan, these blue sea days are the perfect balance to busy days spent exploring shore side.

### Day 4 - Albany (Western Australia)

At 400 kilometres southeast of Perth, Albany is often overlooked in favour of the bigger city. This is of course a mistake as Albany and its gorgeous surrounding region have much to offer. The city is the oldest settlement in Western Australia, beating Perth and Fremantle by over two years (Albany was founded in late 1826, the others in June 1829). At the time of its foundation, the city was used as a military outpost as part of a plan to prevent invasion, particularly by the French who had taken a shine to the region. With its excellent - and unusually deep - harbour, Albany was seen as the jewel of Western Australia and there are reminders of the city's colonial past all over the city. The arrival of Europeans in the region led to Albany becoming a major player in the whaling industry. This only ceased in 1978 and the Historic Whaling Station, a museum dedicated to the city's industrious past, now honours the good, the bad and the ugly aspects of a business that once supported an entire community. If that does not sound like your cup of tea, then do not miss a trip to the Princess Royal Fortress Military Museum for a glimpse of Albany's ANZAC History at the excellent National ANZAC Centre. However, like much of Australia's west coast, the real





beauty of Albany lies in Mother Nature. Walk to the top of Mount Clarence and view the magnificent King George Sound from above or take a stroll along the coastal path and enjoy vistas of some of Australia's most rugged and spectacular scenery.

#### Day 5 - Esperance

Esperance and the Recherche Archipelago sheltering Esperance Bay received their name in 1792, when a French expedition under d'Entrecasteaux looked for shelter from a storm. Ten years later Matthew Flinders took refuge at Lucky Bay, some 30 kilometers southeast of Esperance near Cape Le Grand, another feature named during the French visit. It was not until the 1860s that settlement began and by the 1890s Esperance was known as the "Gateway to the Goldfields" further inland. Today some 12,000 residents live in Esperance. The town is southeast Western Australia's only port and as such quite important for grain and mineral exports. Tourism is a major factor as Esperance and its surrounding area have such unusual attractions as a museum featuring debris from Skylab's 1979 return to earth, a full-size replica of Stonehenge, the Pink Lake -which formerly used to be pink- an IBA for Hooded Plovers and Banded Stilts, several national parks and some of the whitest beaches in Australia. Lucky Bay is one of the iconic places, as kangaroos are regularly seen on the beach sunbathing.

#### Days 6 - 7 - Day at sea

Days at sea are the perfect opportunity to relax, unwind and catch up with what you've been meaning to do. So whether that is going to the gym, visiting the spa, whale watching, catching

up on your reading or simply topping up your tan, these blue sea days are the perfect balance to busy days spent exploring shore side.

#### Day 8 - Port Lincoln

Known as the seafood capital of Australia, Port Lincoln is a foodie paradise. Home to Australia's largest fishing fleet, numerous seafood restaurants and a prized local wine region, this is one destination where it pays to travel with your taste buds. The city's traditional name in Barngala is 'Kallinyalla' (pronounced Galinyalla), literally translating as 'sweet waters'. That should give you some indication of how seriously the ocean is taken in these parts - it provides employment, entertainment and experiences that are just unseen in other parts of the country. Add in contrasting coastal landscape that ranges from quiet coves to surf happy beaches to rugged oceanic coastline, and you'll soon see why Port Lincoln is fast becoming one of Australia's favourite places. The city is located on the lower Eyre Peninsula, on the shore of Boston Bay. Discovered by Matthew Flinders in 1802, Port Lincoln was once under consideration to become the state's capital. However, a lack of freshwater mired that idea, forcing settlers to look 280 kilometres east, to Adelaide. While European discovery is fairly recent, historians should note that the region had been inhabited by Aboriginal groups including the Nauo (south-western Eyre), Barngarla (eastern Eyre), Wirangu (north-western Eyre) and Mirning (far-western Eyre) for over 40,000 years. For those who want to look beyond the city boundaries, Port Lincoln is home to some extremely diverse and abundant nature, and a trip to the National Park is well worth it.



## The Small Cruise Ship Collection

[www.small-cruise-ships.com](http://www.small-cruise-ships.com)

[small-cruise-ships.com](http://small-cruise-ships.com)

[info@small-cruise-ships.com](mailto:info@small-cruise-ships.com)

### Days 9 - 10 - Adelaide

For those of you that might think that Adelaide lacks behind its coastal counterparts in terms of culture and creativity, think again. Adelaide is a thriving urban city with bright, leafy alleys that beg to be explored. The city's labyrinthine lanes and alleys are bursting with bars and eateries, serving everything from local craft beer to a modern Australian cuisine. Uber aware of their carbon footprint, Adeladians like to keep things close to home, so expect lots of local produce which is abundant, fresh and delicious. Unsurprisingly, Barossa wine from the neighbouring valley features prominently on wine lists everywhere. Naturally, a lot of life centres around the lovely beaches, which are home to surfers, sheltered waters and wide boulevards. The coast is blessed with acres of parkland, perfect for lazing the afternoon away. Many of Australia's most beautiful (and historic) buildings can be found within the boundaries of the city including the handsomely-restored former Railway Building, numerous stately Colonial buildings, St. Peter's Cathedral, the grand old Parliament Buildings and nearby Government House, which all make a worthy addition to any visit. Adelaide is of course known for its wide diversity of faiths, and as such carries its nickname "the city of churches" with pride. Contrary to other Australian penal settlements, Adelaide was a free settlement. This meant that it was also a state free from religious persecution, leading rise to the construction of many churches.

### Day 11 - Kangaroo Island

Kangaroo Island is with 1,740 square miles the third largest island off the coast of Australia. It is 96 miles long and 34 miles

wide, and known for its outstanding natural beauty. Due to its remote location, Kangaroo Island was less affected than the mainland by the impact of European development. To this day, the island is rich in diverse flora and fauna seldom found elsewhere. As one of the world's last unspoiled wilderness places, about 30 percent of the island has been designated as National Parks. The most important one is Flinders Chase at the western end of Kangaroo Island, with Seal Bay Conservation Park following close behind. Its large sandy beach and dune area is home to Australian sea lions where they come to rest and nurse their young. Kingscote, formerly known as Queenscliffe, is the largest town on the island and its main supply depot. Tourism is a significant element in the local economy. A mix of attractive small townships, wildlife sanctuaries and fascinating wilderness areas guarantee a steady stream of visitors each year.

### Day 12 - Robe

Located halfway between Adelaide and Melbourne, along the beautiful Limestone Coast in South Australia, lies Robe--a town of endless beaches, laid-back fishing-village charm, and tempting local seafood. As the name suggests, there's no shortage of space to unwind on Long Beach. A thick band of white sand stretches luxuriously for almost ten miles beside the breathtaking blue ocean. Kick back and relax, or wander beside surfers, flicking fishing lines, and makeshift beach cricket games. Head over to the cherry and white-painted Robe Obelisk landmark--which stands out on Cape Dombey--to soak in picturesque coastal views. The streets of Robe are marked with a heritage trail of historic buildings and cottages; spot the litany





## The Small Cruise Ship Collection

[www.small-cruise-ships.com](http://www.small-cruise-ships.com)

[small-cruise-ships.com](http://small-cruise-ships.com)

[info@small-cruise-ships.com](mailto:info@small-cruise-ships.com)

of blue plaques that reveal Robe's stories. Refuel by sampling cafes producing velvety flat whites, or tucking into freshly gathered rock lobster, while exploring Victoria Street's establishments. Prior to the arrival of the Europeans, the area was home to Bunganditj and Meintangk peoples. Dig deeper to learn more about their heritage, and the gold rush history that drew more than 15,000 Chinese migrants to these shores in the 1800s.

### Day 13 - Day at sea

Days at sea are the perfect opportunity to relax, unwind and catch up with what you've been meaning to do. So whether that is going to the gym, visiting the spa, whale watching, catching up on your reading or simply topping up your tan, these blue sea days are the perfect balance to busy days spent exploring shore side.

### Days 14 - 15 - Hobart, Tasmania

Mount Wellington's looming, cloud-wisped form is an ever-present sight as you explore booming Hobart, the cosmopolitan capital of Australia's most southerly state. A former British penal colony, nowadays Australia's second-oldest city is a place to live the free and easy life. Encircled by dramatic cliffs, landscaped gardens and rolling vineyards, Hobart is also well stacked with cultural pursuits including museums, and respected - if controversial - galleries plastering new and old art to their walls. With fresh sea breezes and a fabulous location, Hobart is a creative place, where you can browse the produce of local artisans in Saturday's massive

Salamanca Market - which draws visitors from all across Tasmania and beyond. Eat at waterfront restaurants, or rise up Mount Wellington's slopes to appreciate the remoteness of Hobart's location. From this elevated platform, you can look down across views of flowing forests, undulating mountains and endless ocean swallowing up the city. Further away, animal sanctuaries introduce you to the island's famous inhabitants, including the famous Tasmanian devil. Thirsty? Hobart has a long brewing tradition - so enjoy a refreshing ale poured from the country's oldest brewery. The climate's blend of generous sunshine and cool Antarctic breezes helps Hobart to produce its acclaimed wines, and thick clumps of pinot noir grapes hang from vineyards dotted along the valleys nearby. Taste the wines, accompanied by a platter of artisan cheese and sausage. Whiskey aficionados aren't left in the cold either, with international award-winning distilleries close by.

### Day 16 - Day at sea

Days at sea are the perfect opportunity to relax, unwind and catch up with what you've been meaning to do. So whether that is going to the gym, visiting the spa, whale watching, catching up on your reading or simply topping up your tan, these blue sea days are the perfect balance to busy days spent exploring shore side.

### Day 17 - Melbourne

Australia's metropolitan cultural capital is a refined, contemporary and richly liveable city - which has a blend for every taste. The smells of freshly ground, artisan coffees fill the



streets of this hip, youthful city, which is generously sprinkled with fine dining establishments, art galleries, and absorbing museums. With an airy outdoor lifestyle, Melbourne is a vibrant global hub of fashion, fun and festivities. Multicultural and diverse, Victoria's capital is crisscrossed by narrow alleys and splashed with street art. It's fair to say Melbourne's bearded baristas take their coffees seriously. Settle in to sample the unique coffee culture that is an essential part of Melbourne life. Looking for something a little stronger? The city's rooftop bars come alive with clinking cocktails as the sun sets. A world leader in culinary arts, take your seat at award-winning restaurants, and sample world foods alongside delicious wines, cultivated in the vineyards of the surrounding valleys. Savour a glass while cruising the arching Yarra River, for an unbeatable introduction to Melbourne. An outdoor city, it's no surprise that Melbourne is one of Australia's sporting giants. The vast bowl of Melbourne Cricket Ground serves as the city's sporting cathedral - squeezing in over 100,000 fans and hosting various sports on its hallowed, oval turf. Whether it's the rumble of hoofs during the Melbourne Cup, revs of engines during the Formula One, or thwacks of tennis balls during the Australian Open - few places can boast such a comprehensive list of high-profile sporting appeals.

Please note:

Itineraries are subject to change.





## The Small Cruise Ship Collection

[www.small-cruise-ships.com](http://www.small-cruise-ships.com)

[small-cruise-ships.com](http://small-cruise-ships.com)

[info@small-cruise-ships.com](mailto:info@small-cruise-ships.com)

## YOUR SHIP: SILVER NOVA

**YOUR SHIP:**

**Silver Nova**

**VESSEL TYPE:**

**LENGTH:**

**PASSENGER CAPACITY:**

**BUILT/REFURBISHED:**

Silver Nova is more than a new ship, it is a Nova way of luxury travel. This modern and beautiful vessel will debut in summer 2023, and is a home away from home for up to 728 guests. Silver Nova's innovative asymmetrical design introduces the world like never before, offering an immersive destination experience to our guests. With a gross tonnage of 54,700 tons she will offer a space-to-guest ratio of 75 GRT-per-passenger becoming one of the most spacious cruise ships ever built. What's more, Silver Nova will be one of the most environmentally friendly, and thanks to her groundbreaking technological solutions, she will propel the ship into a new era of sustainable cruising. It's the Nova way to travel. S.A.L.T. Chef's Table Prepare for an intimate and interactive dining experience like no other at the S.A.L.T. Chef's Table. Indulge in a choreographed menu of small plates highlighting regional flavours and star ingredients, all accompanied by unique wines and cocktails. Per guest reservation fee of U\$180 (incl. complimentary wine & cocktail pairing). Reservations will be taken exclusively on board Silver Nova. S.A.L.T. Kitchen Are you hungry for something new? Eat your way through the places on your cruise in the S.A.L.T. Kitchen. Enjoy destination-inspired

menus, including the Terrain menu, which offers recipes and flavours specific to the port visited, and the Voyage menu, which draws inspiration from the best flavours of the voyage. Pull up a chair and savour every taste of your cruise in a vibrant and welcoming atmosphere. S.A.L.T. Kitchen is the opportunity for all guests aboard Silver Nova to experience the very lifeblood of their destination. Atlantide Atlantide offers guests our quintessential dining experience. Combining contemporary elegance and hallmark Silversea service, this classic restaurant offers our signature fine dining. Atlantide is one of our best-loved eateries, and on Silver Nova we have given it an updated design. Large picture windows, sophisticated lighting design, plus a warm colour spectrum give Atlantide a blend of high-end and whispered luxury. The menu prides itself on superb ingredients and sublime flavour combinations, from caviar to lobster to gorgeous, melt in the mouth deserts. La Terrazza Our hallmark Italian restaurant is as varied as the food-loving country itself. La Terrazza aboard Silver Nova offers an unparalleled destination dining experience, from its expansive floor-to-ceiling windows to its large, outdoor terrace. Enjoy all the tastes of the different regions, including the best homemade pasta, fresh antipasto, bowls of steaming risotto, hearty ragu and delicious tiramisu. Be sure to try one of the bold wines from the cellar, to wash it all down. La Dame Indulge in new epitome of French fine dining aboard Silver Nova, where culinary heritage meets modern innovation. Immerse yourself in an exquisite gastronomic experience showcasing deep, balanced flavours, from curated tasting menus to a la carte selections paired with thoughtfully curated wine selection. Per guest reservation fee of

The Small Cruise Ship Collection  
[www.small-cruise-ships.com](http://www.small-cruise-ships.com)

**01432 507 280** (within UK)

[info@small-cruise-ships.com](mailto:info@small-cruise-ships.com) | [small-cruise-ships.com](http://small-cruise-ships.com)



## The Small Cruise Ship Collection

[www.small-cruise-ships.com](http://www.small-cruise-ships.com)

[small-cruise-ships.com](http://small-cruise-ships.com)

[info@small-cruise-ships.com](mailto:info@small-cruise-ships.com)

US\$160 (incl. complimentary wine pairing). Kaiseki Experience the harmony of flavours and aesthetics with our enhanced Kaiseki dining experience. Delight in the fusion of Washoku's culinary heritage and health benefits, where each meticulously crafted dish is a work of art. Explore the depth and diversity of Japanese spirits with our exclusive selection of sake and Japanese whiskeys or savour a refreshing alternative from our delightful tea selection or cocktails. Per guest reservation fee of US\$80 (incl. complimentary sake, Japanese whiskeys or TWG tea and tea cocktails selection). Silver Note Where do you go if you want great food and a brilliant atmosphere in a relaxed and sophisticated setting? Silver Note of course! Harkening back to the old school days of dinner and dancing, this venue embodies a feeling of fun and sense of glamour that is unequalled in the industry. Jazz bands and soul singers play live as you sample delicate tapas style dishes with a gourmet twist. We guarantee a superlative night of entertainment in the gorgeously designed dinner venue. The Grill Silversea's much-loved casual dining restaurants serves a delectable range of burgers and salads by day, and turns into our famous Hot Rocks table BBQ concept by night. Found in our brand new eating venue The Marquee, The Grill is quite simply, the best place to eat between sea and sky. If you like flavoursome meals cooked to perfection, a casual laid back atmosphere and OMG views, then The Grill is the answer to your prayers. Spaccanapoli Nothing says Italy quite as well as a hot, fresh pizza. Spaccanapoli is a slice of Naples, where you'll taste deliciously thin, freshly made pizzas, topped with creamy mozzarella and minimalist toppings. The light and airy pizzeria forms part of our new al-fresco eatery The Marquee, and is the perfect choice for diners who want to be dazzled by our talented pizzaiolos spinning the dough in the open-air kitchen. Whether you want a light lunch or to share a slice with friends over an

aperitivo, it's always the right time for Spaccanapoli. The Pool Deck Enjoy a reimagined space where you can relax, refresh and rejuvenate on decks 10 and 11. Ample sunbeds for everyone, more space than ever before and the largest pool in the fleet - which offers exceptional 270° unhampered views - are just the beginning. The upper level sun deck is perfectly placed for those who want a quieter space to relax, and still enjoy those incredible, expansive views that are the hallmark of Silver Nova. But it is The Cliff Whirlpool, an infinity edge, glass fronted whirlpool, that really makes The Pool Deck something special. The Dusk Bar With an emphasis on the destination, panoramic views connects you with the world beyond on The Dusk Bar. This superb open-air sky bar provides plenty of space for guests to enjoy a pre or post dinner drink, while drinking in the jaw dropping 270-degree, panoramic views from the stern. The Dusk Bar's blessed combination of idyllic atmosphere and lovely drinks will guarantee to tick your boxes time after time. Whether you're enjoying a Spritz in South America, a cocktail in the Caribbean or a night cap in the Mediterranean, we think The Dusk Bar's unobstructed views give you a new perspective on sunsets at sea. The Marquee The expansive, attractive Marquee houses two of our greatest dining successes. Thanks to Silver Nova's groundbreaking asymmetrical design, we have been able to create an exciting new al fresco dining venue. The Marquee incorporates both The Grill and Spaccanapoli—two of Silversea's existing signature venues, which offer guests our trademark 'hot rocks' culinary concept as well as what are surely the best pizzas at sea. The Marquee will welcome guests in a relaxed atmosphere, serving casual fare by day and dinner under the stars by night. Arts Cafe The Arts Cafe offers a cultural setting for eating, drinking and socialising, as well as a chance to lose yourself while reading up on all your favourite artists and art.

The Small Cruise Ship Collection  
[www.small-cruise-ships.com](http://www.small-cruise-ships.com)

**01432 507 280** (within UK)

[info@small-cruise-ships.com](mailto:info@small-cruise-ships.com) | [small-cruise-ships.com](http://small-cruise-ships.com)





## The Small Cruise Ship Collection

[www.small-cruise-ships.com](http://www.small-cruise-ships.com)

[small-cruise-ships.com](http://small-cruise-ships.com)

[info@small-cruise-ships.com](mailto:info@small-cruise-ships.com)

Enjoy healthy snacks and smoothies plus hot and cold drinks, juices, pastries and sandwiches in a light and airy space. Pop in for a late breakfast or afternoon snack, along with real Italian espresso plus a great range of tea. S.A.L.T. Bar Nothing says authentic experience better than Silver Nova's S.A.L.T. Bar. Get a taste for the authentic and settle down to enjoy locally-inspired cocktails and drinks. How can you go wrong with a Rum Punch in Barbados, a Pastis over ice in Marseille or a Pisco Sour in Lima? Nothing unites new faces and old friends in quite the same way. Be inspired to find your perfect locally-inspired beverage at the S.A.L.T. Bar and let in the colour and flavours of your journey rush in. S.A.L.T. Lab Welcome to the S.A.L.T. Lab, an interactive space where guests can deep-dive into local culinary heritage and techniques. Join our talented chefs and learn how your region's food is central to its culture. Engage in your destination through workshops, lectures and cooking demonstrations for an authentic souvenir not available in any shop. The S.A.L.T. Lab is not just about food and flavour; it is a unique place where holistic destination immersion gives an entirely new dimension to travelling. This is where the magic happens! The Shelter The Shelter is our newest pre and post dinner cocktail venue. Settle in amid an intimate and elegant setting, resplendent with sophisticated lighting, inviting sofas and stunning wraparound bar. Strategically located on deck three, the atmospheric hideaway opens onto the Atrium, creating an openness and connection to the other neighbouring venues. We promise you'll fall in love with one of the best bars on board while our talented team of mixologists mix and shake our range of signature and bespoke cocktails. With it is the perfect destination, warm smiles and legendary Silversea service, get set for unforgettable nights in The Shelter. Dolce Vita Our main bar has been newly reimagined for Silver Nova! Dolce

Vita has of course kept her legendary charm, inspired cocktails, stylish decor and comfortable seating, but a central bar now means the warm ambience is better than ever! Oozing Italian glamour, Dolce Vita is a relaxed, refined bar with a nightly piano player playing all your favourite tunes. Perfect for pre-dinner aperitivi, or even a post-dinner cocktail, Dolce Vita is truly the beating heart of social life on board. Panorama Lounge From early morning to late at night, the Panorama lounge offers everything you could wish for. A peaceful retreat that is the perfect place to break away to, a social place to meet and greet old friends, or an evening venue to partake in a cocktail as you sit back and watch the world go by. Sink into the plush seats and come evening, enjoy listening to the gentle sounds of a pianist, or the invigorating beats of our in-house DJ. Connoisseur's Corner Our smoking lounge aboard Silver Nova is our latest venue where cigar-lovers can buy and sample some of the world's finest Havanas, Cohibas, Partagas, Montecristos, Ramon Allones and Bolivars. Combining all the elements of cigar culture both indoors and on its stylish terrace, the Connoisseur's Corner is where aficionados can meet and mingle to share their iconic passion. Observation Lounge Set on the highest level at the very top of the ship, this is a quiet space for reading and reflection while being dazzled by the undulating seascapes that are constituent to life on board. Borrow a book from the in-house library, read the papers or just embrace the tranquillity of being at sea. The Venetian Lounge The grandeur and magic of music and theatre. The experience of being transported by performance. That satisfying feeling of seeing an evening show ... Welcome to Venetian Lounge, a place where the arts of theatre and music meet with full-scale productions and feature films. Paying tribute to a golden age of glamour, Venetian Lounge offers belle-epoque style cabaret seating, with

The Small Cruise Ship Collection  
[www.small-cruise-ships.com](http://www.small-cruise-ships.com)

**01432 507 280** (within UK)

[info@small-cruise-ships.com](mailto:info@small-cruise-ships.com) | [small-cruise-ships.com](http://small-cruise-ships.com)

# The Small Cruise Ship Collection

[www.small-cruise-ships.com](http://www.small-cruise-ships.com)

[small-cruise-ships.com](http://small-cruise-ships.com)

[info@small-cruise-ships.com](mailto:info@small-cruise-ships.com)

intimate tables and chairs subtly placed between the rows of comfortable tiered banquettes. As the stage lights are dimmed, soak up the atmosphere, relax and enjoy a night of dazzling sights and sounds. Atrium Located on deck 4, the Atrium is the beating heart of Silver Nova. Inspired by Roman architecture, The Atrium magnificent windows floods our central meeting areas with abundant natural light. The area is home to both the Arts Cafe and The Shelter, as well as main service areas such as the Reception, Shore Concierge and Future Cruise Sales. The Atrium's enormous glass wall stretches over two decks, guaranteeing a deep connection with your destination whether at sea or docked in port. Boutique Exceptional shopping experiences do not end in the cosmopolitan cities we visit. Silversea's striking new shipboard boutiques, reimagined and redesigned are stunning modern design spaces befitting the finest creations from legendary designers. Carefully selected partners onboard Silversea's duty-free boutiques offers our guests a carefully curated selection of cutting edge fashions, jewellery, accessories, fine perfumes, cosmetics and Silversea Logo collection all at duty-free prices. Otium Spa Finding relaxation is one the of the principle aims of taking a cruise, so why not join us in the Otium Spa for guaranteed indulgence? Turn off your phone, slip on your robe and get ready for a bit of me time. Whether you need to unwind with a massage, perk up your skin with a facial or work up a sweat in sauna and steam room, Otium Spa offers the very latest in beauty therapy. Make every day a special occasion in Otium Spa. Casino Let the fun begin! Channel your inner James Bond and enjoy a flutter at a variety of table games including American Roulette, Blackjack and Poker as Silver Nova glides silently through the waves. An assortment of multi-game, multi-denominational reel and video slot machines are also available. Prepare yourself for a luxurious

and exhilarating experience with every turn of a card and spin of the wheel. Game on! Fitness Centre With state of the art Technogym® equipment, free weights and speciality classes, the Fitness Centre brings together elite design with programs that are specifically created for your body type and needs. With personal trainers available for individual sessions, training here is more a five-star experience for all levels of fitness and experience. And with the best view that you'll ever get whilst working out, there are definitely no



more excuses ...

The Small Cruise  
Ship Collection  
[www.small-cruise-ships.com](http://www.small-cruise-ships.com)

**01432 507 280** (within UK)

[info@small-cruise-ships.com](mailto:info@small-cruise-ships.com) | [small-cruise-ships.com](http://small-cruise-ships.com)



# The Small Cruise Ship Collection

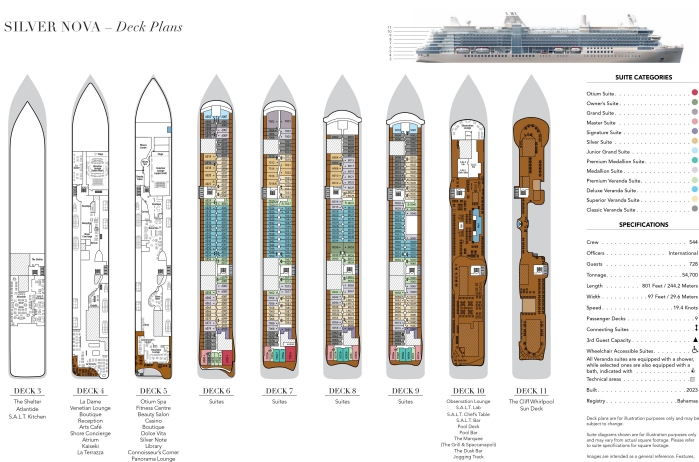
www.small-cruise-ships.com

small-cruise-ships.com

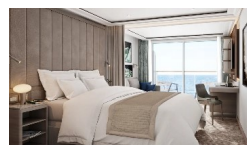
info@small-cruise-ships.com

## INSIDE YOUR SHIP

SILVER NOVA – Deck Plans



### Classic Veranda



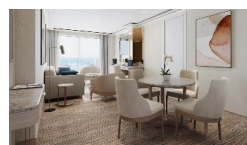
### Deluxe Veranda



### Grand 1 Bedroom



### Junior Grand 1 Bedroom



### Junior Grand 2 Bedroom

### Master

### Medallion

### Otium

### Owner 1 Bedroom

### Owner 2 Bedroom

### Premium Medallion

### Premium Veranda

### Signature

### Silver

The Small Cruise Ship Collection

www.small-cruise-ships.com

01432 507 280 (within UK)

info@small-cruise-ships.com | small-cruise-ships.com



The Small Cruise  
Ship Collection

[www.small-cruise-ships.com](http://www.small-cruise-ships.com)

[small-cruise-ships.com](http://small-cruise-ships.com)

[info@small-cruise-ships.com](mailto:info@small-cruise-ships.com)

## PRICING

14-Nov-2025 to 30-Nov-2025

Junior Grand 1 Bedroom	£22565 GBP pp
Silver	£23795 GBP pp
Premium Medallion	£21409 GBP pp
Deluxe Veranda	£12555 GBP pp
Owner 1 Bedroom	£40659 GBP pp
Master	£31725 GBP pp
Premium Veranda	£13095 GBP pp
Otium	£43355 GBP pp
Junior Grand 2 Bedroom	£32805 GBP pp
Medallion	£19175 GBP pp
Classic Veranda	£11399 GBP pp
Owner 2 Bedroom	£52439 GBP pp
Signature	£30265 GBP pp
Superior Veranda	£11935 GBP pp
Grand 1 Bedroom	£32725 GBP pp



The Small Cruise  
Ship Collection

[www.small-cruise-ships.com](http://www.small-cruise-ships.com)

01432 507 280 (within UK)

[info@small-cruise-ships.com](mailto:info@small-cruise-ships.com) | [small-cruise-ships.com](http://small-cruise-ships.com)