



15 DAYS LUXURY AUSTRALIA CRUISE - MELBOURNE TO CAIRNS

Sail Australia's Sunshine Coast, visiting lively cities, immaculate islands, and extraordinary underwater worlds. Journey from Melbourne's cultural hub to the arch of Sydney's famous Harbour Bridge. Sailing north, delve into Queensland's gleaming golden beaches along a coastline of turquoise waters and Great Barrier Reef adventures. Discover Australia's indigenous heritage, legendary wildlife and easygoing appeal enroute to the tropical north and Cairns.



ITINERARY

Day 1 - Melbourne

Australia's metropolitan cultural capital is a refined, contemporary and richly liveable city - which has a blend for every taste. The smells of freshly ground, artisan coffees fill the streets of this hip, youthful city, which is generously sprinkled



The Small Cruise Ship Collection

www.small-cruise-ships.com

small-cruise-ships.com

info@small-cruise-ships.com

with fine dining establishments, art galleries, and absorbing museums. With an airy outdoor lifestyle, Melbourne is a vibrant global hub of fashion, fun and festivities. Multicultural and diverse, Victoria's capital is crisscrossed by narrow alleys and splashed with street art. It's fair to say Melbourne's bearded baristas take their coffees seriously. Settle in to sample the unique coffee culture that is an essential part of Melbourne life. Looking for something a little stronger? The city's rooftop bars come alive with clinking cocktails as the sun sets. A world leader in culinary arts, take your seat at award-winning restaurants, and sample world foods alongside delicious wines, cultivated in the vineyards of the surrounding valleys. Savour a glass while cruising the arching Yarra River, for an unbeatable introduction to Melbourne. An outdoor city, it's no surprise that Melbourne is one of Australia's sporting giants. The vast bowl of Melbourne Cricket Ground serves as the city's sporting cathedral - squeezing in over 100,000 fans and hosting various sports on its hallowed, oval turf. Whether it's the rumble of hoofs during the Melbourne Cup, revs of engines during the Formula One, or thwacks of tennis balls during the Australian Open - few places can boast such a comprehensive list of high-profile sporting appeals.

Day 2 - Day at sea

Days at sea are the perfect opportunity to relax, unwind and catch up with what you've been meaning to do. So whether that is going to the gym, visiting the spa, whale watching, catching up on your reading or simply topping up your tan, these blue sea days are the perfect balance to busy days spent exploring shore side.

Day 3 - Eden

Known for the migrating whales that cruise through its waters between May and November, Eden sits in New South Wales' scenic Twofold Bay. While the whales are now protected and cherished here, the town was initially founded as a whaling centre and has many fascinating stories to tell. Namely, a unique symbiotic relationship with the killer whales. Rewarded with the tongues from freshly caught whales, the orcas would help to round up baleen whales in the bay, making it easy for humans to land them. This mutually beneficial exchange came to be known as The Law of the Tongue. Find out more about it, and the area's whaling past, at Eden Killer Whale Museum - where you can see the skeleton of the most famous orca accomplice, Old Tom. A yearly whale festival now celebrates the return of the magnificent whales to these waters. Head into Ben Boyd National Park for amazing bird watching, and to see the arches of soaring rock formations rising beside fire-red cliffs. View the glorious coastal scenery of frothing aqua-seas and rugged headlands, from the viewing deck on top of Boyd's Tower. Initially devised as a lighthouse, it would later be used as a lookout to spot whales breaching the bay's waters, and to see Old Tom splashing his tail to alert the whalers. Travel through more glorious scenery and tangled rainforest, to the verdant promontory of Green Cape Lighthouse. Jutting out into the South Pacific Ocean, the pearly-white lighthouse caps crumbling cliffs and offers sweeping views of the jagged cliffs and wave-thrashed rocks. The wrecks that lie offshore attest to the respect these sometimes-punishing waves demand.

Days 4 - 5 - Sydney

The Small Cruise Ship Collection
www.small-cruise-ships.com

01432 507 280 (within UK)

info@small-cruise-ships.com | small-cruise-ships.com



The Small Cruise Ship Collection

www.small-cruise-ships.com

small-cruise-ships.com

info@small-cruise-ships.com

With its glorious harbour, lavish golden beaches and iconic landmarks, Sydney is Australia's showpiece city. Creative and curious, discover the world-class cuisine, indigenous culture, and irresistible beach life that make Sydney one of the world's most dynamic, exciting destinations. Sydney's sparkling harbour is the heart of a richly cultural city. Overlooked by the metallic curves of the masterpiece of an Opera House, and that grand arched harbour bridge. Take it all in from the water, and admire the iconic landmarks, which are set before the city's gleaming skyline backdrop. If you're feeling adventurous, take the legendary climb up the smooth curve of the bridge - nicknamed the Coathanger - to soak in the shining city's spread from a unique perspective. Spread out to tan on one of the world's most famous stretches of sand - Bondi Beach. Restaurants and bars burble away in the background, while the sun beams down, and surfers curl and leap over pure rollers. Swim in spectacular salty ocean pools, or wander the beautiful Bondi to Coogee coastal walk for more of this sun-gorged stretch of prime coastline. Leaving the thrills of Australia's largest city behind is surprisingly simple - take to the skies to be flown above skyscrapers and rippling ribbons of waves, out to majestic peaks, sheer cliffs and iconic rock formations - like the Three Sisters of the Blue Mountains. Or, drop in on wildlife sanctuaries caring for the country's animals - from hopping kangaroos to adorably cute, cuddly koalas.

Day 6 - Newcastle

Once known as the Steel City, today Newcastle is one of

Australia's hippest cities. It's flanked by the Pacific Ocean and six beaches on its eastern side and a harbor on its west side. Gentrification began when the steel mills closed in 1999. Nowadays the old wharves and warehouses form part of the lively Honeysuckle precinct, which buzzes with hotels, cafes, and restaurants.

Day 7 - Day at sea

Days at sea are the perfect opportunity to relax, unwind and catch up with what you've been meaning to do. So whether that is going to the gym, visiting the spa, whale watching, catching up on your reading or simply topping up your tan, these blue sea days are the perfect balance to busy days spent exploring shore side.

Day 8 - Brisbane

They don't call it the Sunshine State for nothing, and Brisbane's modern metropolis fully exploits its sun-blessed location, basking in Queensland's generous year-round glow. The envied climate makes Brisbane a city of outdoor adventure, activity and relaxation, where days drift by surfing rollers, or relaxing in the shade of swaying palms. While Brisbane may play second fiddle to Sydney and Melbourne at times, it radiates a creative and contemporary energy, offering visitors a refreshing combination of laidback waterfront luxury and urban sophistication. Sandy islands nearby provide scenic diving and oceanside relaxation opportunities, while the city's animal sanctuaries offer opportunities to meet unbearably cute koalas and kangaroos. Brisbane's impressive skyline of metallic cylinders rises high

The Small Cruise
Ship Collection
www.small-cruise-ships.com

01432 507 280 (within UK)

info@small-cruise-ships.com | small-cruise-ships.com



The Small Cruise Ship Collection

www.small-cruise-ships.com

small-cruise-ships.com

info@small-cruise-ships.com

above the broad Brisbane River below, which curves lazily through downtown. The rolling waves of the Pacific are close by, but there's something special about relaxing on soft sand in the very heart of the city, on the beautifully executed South Bank Parklands man-made beach. With golden sand and shallow lagoon waters to cool off in, it's a dreamy spot to lie back with a book, amid the landscaped gardens. Nestled in a river meander of its own, Brisbane Botanic Park glows with colour, tropical plants and wading ibis birds, and is easily walkable from the Parklands. The South Bank is the cultural hub of city, and houses the celebrated Queensland Gallery of Modern Art - a surreal and vibrant jaunt through contemporary Australian art. The city's award-winning restaurants also serve up elite food, matched with generous splashes of wine, direct from the nearby Granite Belt's wine regions.

Day 9 - Mooloolaba

Once a humble fishing village, tourism has boomed in recent years and transformed Mooloolaba into one of the most coveted of Queensland's popular holiday resorts. Located 97 km from Brisbane and set right in the heart of the Sunshine Coast, Mooloolaba is much more than an oceanfront playground. Certainly, surfers will find their nirvana here, with ideal spots for both the initiated and the beginner dotted along the coast, along with the famous surfing festival in March. But it's not all about waxing your board and point breaks - Mooloolaba Beach has featured as one of the world's top ten beaches for two years running and it looks set to stay that way. An early morning stroll will see you mingling with the locals, and with no beach goers around, be sure to take your cameras for some of the most

instagrammable views you're ever likely to see. Step away from the beach and guests will find some good shopping with everything from antiques and jewellery to beach towels and sarongs for sale. Local artists set up stalls on the pretty esplanade so art lovers will be sure to take home a souvenir that is really special. Epicureans meanwhile will already no doubt looking forward to tasting some of the famous Mooloolaba prawns, caught straight off a trawler. How's that for freshness! Try the delicious local speciality either in one of the buzzing restaurants in town or straight from the Seafood Precinct and grab a spot in the shade for a picnic! If fun in the sun isn't your cup of tea, then the Mooloolaba coastline is certainly worth seeing. Hire a motorboat, or relax on a mini-cruise and enjoy the opportunity of searching, and perhaps swimming, with whales, dolphins and turtles. Seaplanes offer another interesting way of seeing the coast with the more adventurous opting for the "doors off" experience.

Day 10 - Fraser Island

Fraser Island is a World Heritage site listed for the diversity and beauty it holds. Despite being a sand island, Fraser has over 100 lakes and the landscape changes constantly as dunes are moved across the island by wind. With over 350 bird species recorded, Fraser Island is also part of an 'Important Bird Area' and on the 'Australian National Heritage' list. The island can be explored by 4WD coach and kayak. In addition to the natural history, there is a rich Butchulla Aboriginal culture here. The island's most spectacular lake, Lake McKenzie is well suited for a cooling swim and at the historic central station in the heart of the island, it is possible to walk along the banks of the



The Small Cruise Ship Collection

www.small-cruise-ships.com

small-cruise-ships.com

info@small-cruise-ships.com

Wanggoolba Creek and become immersed in the peacefulness of the rainforest.

Day 11 - Day at sea

Days at sea are the perfect opportunity to relax, unwind and catch up with what you've been meaning to do. So whether that is going to the gym, visiting the spa, whale watching, catching up on your reading or simply topping up your tan, these blue sea days are the perfect balance to busy days spent exploring shore side.

Day 12 - Shute Harbor (Whitsunday Islands)

The 74 Whitsunday Islands are something truly special. Natural artistry at its finest, a sprinkle of powdery white sand, a splash of turquoise seas and a whole heap of glorious sunshine combine to create a revered masterpiece of scattered tropical islands. Shute Harbour is the perfect gateway to this alluring natural wonder, a relaxed town with dashing views of the island-pocked azure seas on its doorstep. Buffered from the bustling beach-front fun of Airlie Beach by the luscious greenery of Conway National Park, Shute Harbour is a quieter spot. It offers glorious, elevated views that will whet your appetite for the immersion in pristine island scenery that lies ahead. Venture off into rainforest-clad hills to find beautiful lookout points like Mount Rooper or head for Lion's Lookout, so you can absorb panoramic views of droplet-like islands rising from blotched turquoise water, and the spread of yachts cruising out to explore. Shute Harbour is the perfect jumping-off point for your own adventure amongst Australia's biggest and most beautiful

island group - the Whitsundays. It's hard to conjure a better vision of tropical paradise, and these stunning, world-renowned islands are just a stone's throw away from the natural port at Shute Harbour. Kinetic sandscapes, heart-shaped coral reefs bursting with underwater life, and dazzlingly bright white beaches beckon you into a captivating, romantic and blissful pocket of Australian perfection.

Day 13 - Townsville

Basking in 320 sunny days a year, Townsville is a welcoming, sun-soaked slice of tropical Australia. Venture to this remote city on the cusp of the tropics, to meet adorable animals, explore gorgeous coastal islands and soak up the reliable sun's bronzing glow. Rise to the rosy rock of Castle Hill - the views down over the sparkling coastal setting, and islands waiting beyond form an amazing welcome. Located on Queensland's north-east coast, the city's bay arcs around Magnetic Island - which lies just a scenic 20-minute ferry ride away. An island sanctuary of beautiful dive sites - set amid vibrant reefs and secluded beach coves - it is one of Townsville's most exquisite natural assets. The island's national park is adorned with wildlife, and you can meet more of Australia's famous residents at the family-owned Billabong Sanctuary - which cares for kangaroos, crocodiles, wallabies and more. Townsville's vast aquarium brings the magic of the region's glittering reefs to land, and the largest reef aquarium in the world ensures that even non-divers can enjoy an authentic insight into the colourful life that blossoms offshore. Visit the beaches of lush tropical islands, or wander Townsville's pretty seaside streets and The Strand's waterfront - lined with charming 19th-century



architecture and plenty of inviting cafes and alfresco eateries. Learn more of North Queensland's indigenous Bindal and Wulgurukaba communities, as you witness cultural performances, or peruse Townsville's galleries, which showcase extraordinary indigenous arts. Join the locals, to feel the region's sporting passion, as a wall of noise greets the North Queensland Cowboys rugby league team, as they take to the field here in Townsville.

Day 14 - Day at sea

Days at sea are the perfect opportunity to relax, unwind and catch up with what you've been meaning to do. So whether that is going to the gym, visiting the spa, whale watching, catching up on your reading or simply topping up your tan, these blue sea days are the perfect balance to busy days spent exploring shore side.

Day 15 - Cairns

Warmly welcoming you to the natural wonders of the Great Barrier Reef, Cairns is a treasure trove of rich tropical beauty and incredible sea life. Swathes of rainforest spread out to the north, where you can soar over the canopy in a cable car, before looking down over narrow channels of water plummeting down gorges and crocodile-filled waterways. The diverse lands of the Atherton Tableland lie to the west, but it's the crystal-clear waters - and life-filled reefs - of Cairns' remarkable underwater world that draws universal adulation. Priding itself as the Gateway to the Great Barrier Reef, explore Cairns' constellation of colour, as you dive into the world's largest and most

spectacular underwater universe. Cairns is huddled in amongst abundant swathes of rainforests, which give way to glorious crescents of golden beach. Kuranda - with its scenic railway and heritage market stalls - waits to be discovered, cloaked within the depths of the rainforest. Learn of the indigenous people of North Queensland during cultural performances, and hear the throaty reverberations of didgeridoos, as you hear eternal stories handed down through time, from generation to generation. Back in Cairns, there's always time for a coffee or a beer, or a feast on fresh oysters with glasses of Cairns' white wines - boldly flavoured with mango and banana notes.

Please note:

Itineraries are subject to change.



The Small Cruise Ship Collection

www.small-cruise-ships.com

small-cruise-ships.com

info@small-cruise-ships.com

YOUR SHIP: SILVER NOVA

YOUR SHIP:

Silver Nova

VESSEL TYPE:

LENGTH:

PASSENGER CAPACITY:

BUILT/REFURBISHED:

Silver Nova is more than a new ship, it is a Nova way of luxury travel. This modern and beautiful vessel will debut in summer 2023, and is a home away from home for up to 728 guests. Silver Nova's innovative asymmetrical design introduces the world like never before, offering an immersive destination experience to our guests. With a gross tonnage of 54,700 tons she will offer a space-to-guest ratio of 75 GRT-per-passenger becoming one of the most spacious cruise ships ever built. What's more, Silver Nova will be one of the most environmentally friendly, and thanks to her groundbreaking technological solutions, she will propel the ship into a new era of sustainable cruising. It's the Nova way to travel. S.A.L.T. Chef's Table Prepare for an intimate and interactive dining experience like no other at the S.A.L.T. Chef's Table. Indulge in a choreographed menu of small plates highlighting regional flavours and star ingredients, all accompanied by unique wines and cocktails. Per guest reservation fee of U\$180 (incl. complimentary wine & cocktail pairing). Reservations will be taken exclusively on board Silver Nova. S.A.L.T. Kitchen Are you hungry for something new? Eat your way through the places on your cruise in the S.A.L.T. Kitchen. Enjoy destination-inspired

menus, including the Terrain menu, which offers recipes and flavours specific to the port visited, and the Voyage menu, which draws inspiration from the best flavours of the voyage. Pull up a chair and savour every taste of your cruise in a vibrant and welcoming atmosphere. S.A.L.T. Kitchen is the opportunity for all guests aboard Silver Nova to experience the very lifeblood of their destination. Atlantide Atlantide offers guests our quintessential dining experience. Combining contemporary elegance and hallmark Silversea service, this classic restaurant offers our signature fine dining. Atlantide is one of our best-loved eateries, and on Silver Nova we have given it an updated design. Large picture windows, sophisticated lighting design, plus a warm colour spectrum give Atlantide a blend of high-end and whispered luxury. The menu prides itself on superb ingredients and sublime flavour combinations, from caviar to lobster to gorgeous, melt in the mouth deserts. La Terrazza Our hallmark Italian restaurant is as varied as the food-loving country itself. La Terrazza aboard Silver Nova offers an unparalleled destination dining experience, from its expansive floor-to-ceiling windows to its large, outdoor terrace. Enjoy all the tastes of the different regions, including the best homemade pasta, fresh antipasto, bowls of steaming risotto, hearty ragu and delicious tiramisu. Be sure to try one of the bold wines from the cellar, to wash it all down. La Dame Indulge in new epitome of French fine dining aboard Silver Nova, where culinary heritage meets modern innovation. Immerse yourself in an exquisite gastronomic experience showcasing deep, balanced flavours, from curated tasting menus to a la carte selections paired with thoughtfully curated wine selection. Per guest reservation fee of

The Small Cruise Ship Collection
www.small-cruise-ships.com

01432 507 280 (within UK)

info@small-cruise-ships.com | small-cruise-ships.com



The Small Cruise Ship Collection

www.small-cruise-ships.com

small-cruise-ships.com

info@small-cruise-ships.com

US\$160 (incl. complimentary wine pairing). Kaiseki Experience the harmony of flavours and aesthetics with our enhanced Kaiseki dining experience. Delight in the fusion of Washoku's culinary heritage and health benefits, where each meticulously crafted dish is a work of art. Explore the depth and diversity of Japanese spirits with our exclusive selection of sake and Japanese whiskeys or savour a refreshing alternative from our delightful tea selection or cocktails. Per guest reservation fee of US\$80 (incl. complimentary sake, Japanese whiskeys or TWG tea and tea cocktails selection). Silver Note Where do you go if you want great food and a brilliant atmosphere in a relaxed and sophisticated setting? Silver Note of course! Harkening back to the old school days of dinner and dancing, this venue embodies a feeling of fun and sense of glamour that is unequalled in the industry. Jazz bands and soul singers play live as you sample delicate tapas style dishes with a gourmet twist. We guarantee a superlative night of entertainment in the gorgeously designed dinner venue. The Grill Silversea's much-loved casual dining restaurants serves a delectable range of burgers and salads by day, and turns into our famous Hot Rocks table BBQ concept by night. Found in our brand new eating venue The Marquee, The Grill is quite simply, the best place to eat between sea and sky. If you like flavoursome meals cooked to perfection, a casual laid back atmosphere and OMG views, then The Grill is the answer to your prayers. Spaccanapoli Nothing says Italy quite as well as a hot, fresh pizza. Spaccanapoli is a slice of Naples, where you'll taste deliciously thin, freshly made pizzas, topped with creamy mozzarella and minimalist toppings. The light and airy pizzeria forms part of our new al-fresco eatery The Marquee, and is the perfect choice for diners who want to be dazzled by our talented pizzaiolos spinning the dough in the open-air kitchen. Whether you want a light lunch or to share a slice with friends over an

aperitivo, it's always the right time for Spaccanapoli. The Pool Deck Enjoy a reimagined space where you can relax, refresh and rejuvenate on decks 10 and 11. Ample sunbeds for everyone, more space than ever before and the largest pool in the fleet - which offers exceptional 270° unhampered views - are just the beginning. The upper level sun deck is perfectly placed for those who want a quieter space to relax, and still enjoy those incredible, expansive views that are the hallmark of Silver Nova. But it is The Cliff Whirlpool, an infinity edge, glass fronted whirlpool, that really makes The Pool Deck something special. The Dusk Bar With an emphasis on the destination, panoramic views connects you with the world beyond on The Dusk Bar. This superb open-air sky bar provides plenty of space for guests to enjoy a pre or post dinner drink, while drinking in the jaw dropping 270-degree, panoramic views from the stern. The Dusk Bar's blessed combination of idyllic atmosphere and lovely drinks will guarantee to tick your boxes time after time. Whether you're enjoying a Spritz in South America, a cocktail in the Caribbean or a night cap in the Mediterranean, we think The Dusk Bar's unobstructed views give you a new perspective on sunsets at sea. The Marquee The expansive, attractive Marquee houses two of our greatest dining successes. Thanks to Silver Nova's groundbreaking asymmetrical design, we have been able to create an exciting new al fresco dining venue. The Marquee incorporates both The Grill and Spaccanapoli—two of Silversea's existing signature venues, which offer guests our trademark 'hot rocks' culinary concept as well as what are surely the best pizzas at sea. The Marquee will welcome guests in a relaxed atmosphere, serving casual fare by day and dinner under the stars by night. Arts Cafe The Arts Cafe offers a cultural setting for eating, drinking and socialising, as well as a chance to lose yourself while reading up on all your favourite artists and art.

The Small Cruise Ship Collection
www.small-cruise-ships.com

01432 507 280 (within UK)

info@small-cruise-ships.com | small-cruise-ships.com



The Small Cruise Ship Collection

www.small-cruise-ships.com

small-cruise-ships.com

info@small-cruise-ships.com

Enjoy healthy snacks and smoothies plus hot and cold drinks, juices, pastries and sandwiches in a light and airy space. Pop in for a late breakfast or afternoon snack, along with real Italian espresso plus a great range of tea. S.A.L.T. Bar Nothing says authentic experience better than Silver Nova's S.A.L.T. Bar. Get a taste for the authentic and settle down to enjoy locally-inspired cocktails and drinks. How can you go wrong with a Rum Punch in Barbados, a Pastis over ice in Marseille or a Pisco Sour in Lima? Nothing unites new faces and old friends in quite the same way. Be inspired to find your perfect locally-inspired beverage at the S.A.L.T. Bar and let in the colour and flavours of your journey rush in. S.A.L.T. Lab Welcome to the S.A.L.T. Lab, an interactive space where guests can deep-dive into local culinary heritage and techniques. Join our talented chefs and learn how your region's food is central to its culture. Engage in your destination through workshops, lectures and cooking demonstrations for an authentic souvenir not available in any shop. The S.A.L.T. Lab is not just about food and flavour; it is a unique place where holistic destination immersion gives an entirely new dimension to travelling. This is where the magic happens! The Shelter The Shelter is our newest pre and post dinner cocktail venue. Settle in amid an intimate and elegant setting, resplendent with sophisticated lighting, inviting sofas and stunning wraparound bar. Strategically located on deck three, the atmospheric hideaway opens onto the Atrium, creating an openness and connection to the other neighbouring venues. We promise you'll fall in love with one of the best bars on board while our talented team of mixologists mix and shake our range of signature and bespoke cocktails. With it is the perfect destination, warm smiles and legendary Silversea service, get set for unforgettable nights in The Shelter. Dolce Vita Our main bar has been newly reimagined for Silver Nova! Dolce

Vita has of course kept her legendary charm, inspired cocktails, stylish decor and comfortable seating, but a central bar now means the warm ambience is better than ever! Oozing Italian glamour, Dolce Vita is a relaxed, refined bar with a nightly piano player playing all your favourite tunes. Perfect for pre-dinner aperitivi, or even a post-dinner cocktail, Dolce Vita is truly the beating heart of social life on board. Panorama Lounge From early morning to late at night, the Panorama lounge offers everything you could wish for. A peaceful retreat that is the perfect place to break away to, a social place to meet and greet old friends, or an evening venue to partake in a cocktail as you sit back and watch the world go by. Sink into the plush seats and come evening, enjoy listening to the gentle sounds of a pianist, or the invigorating beats of our in-house DJ. Connoisseur's Corner Our smoking lounge aboard Silver Nova is our latest venue where cigar-lovers can buy and sample some of the world's finest Havanas, Cohibas, Partagas, Montecristos, Ramon Allones and Bolivars. Combining all the elements of cigar culture both indoors and on its stylish terrace, the Connoisseur's Corner is where aficionados can meet and mingle to share their iconic passion. Observation Lounge Set on the highest level at the very top of the ship, this is a quiet space for reading and reflection while being dazzled by the undulating seascapes that are constituent to life on board. Borrow a book from the in-house library, read the papers or just embrace the tranquillity of being at sea. The Venetian Lounge The grandeur and magic of music and theatre. The experience of being transported by performance. That satisfying feeling of seeing an evening show ... Welcome to Venetian Lounge, a place where the arts of theatre and music meet with full-scale productions and feature films. Paying tribute to a golden age of glamour, Venetian Lounge offers belle-epoque style cabaret seating, with

The Small Cruise Ship Collection
www.small-cruise-ships.com

01432 507 280 (within UK)

info@small-cruise-ships.com | small-cruise-ships.com

The Small Cruise Ship Collection

www.small-cruise-ships.com

small-cruise-ships.com

info@small-cruise-ships.com

intimate tables and chairs subtly placed between the rows of comfortable tiered banquettes. As the stage lights are dimmed, soak up the atmosphere, relax and enjoy a night of dazzling sights and sounds. Atrium Located on deck 4, the Atrium is the beating heart of Silver Nova. Inspired by Roman architecture, The Atrium magnificent windows floods our central meeting areas with abundant natural light. The area is home to both the Arts Cafe and The Shelter, as well as main service areas such as the Reception, Shore Concierge and Future Cruise Sales. The Atrium's enormous glass wall stretches over two decks, guaranteeing a deep connection with your destination whether at sea or docked in port. Boutique Exceptional shopping experiences do not end in the cosmopolitan cities we visit. Silversea's striking new shipboard boutiques, reimagined and redesigned are stunning modern design spaces befitting the finest creations from legendary designers. Carefully selected partners onboard Silversea's duty-free boutiques offers our guests a carefully curated selection of cutting edge fashions, jewellery, accessories, fine perfumes, cosmetics and Silversea Logo collection all at duty-free prices. Otium Spa Finding relaxation is one the of the principle aims of taking a cruise, so why not join us in the Otium Spa for guaranteed indulgence? Turn off your phone, slip on your robe and get ready for a bit of me time. Whether you need to unwind with a massage, perk up your skin with a facial or work up a sweat in sauna and steam room, Otium Spa offers the very latest in beauty therapy. Make every day a special occasion in Otium Spa. Casino Let the fun begin! Channel your inner James Bond and enjoy a flutter at a variety of table games including American Roulette, Blackjack and Poker as Silver Nova glides silently through the waves. An assortment of multi-game, multi-denominational reel and video slot machines are also available. Prepare yourself for a luxurious

and exhilarating experience with every turn of a card and spin of the wheel. Game on! Fitness Centre With state of the art Technogym® equipment, free weights and speciality classes, the Fitness Centre brings together elite design with programs that are specifically created for your body type and needs. With personal trainers available for individual sessions, training here is more a five-star experience for all levels of fitness and experience. And with the best view that you'll ever get whilst working out, there are definitely no



more excuses ...

The Small Cruise Ship Collection
www.small-cruise-ships.com

01432 507 280 (within UK)

info@small-cruise-ships.com | small-cruise-ships.com

The Small Cruise Ship Collection

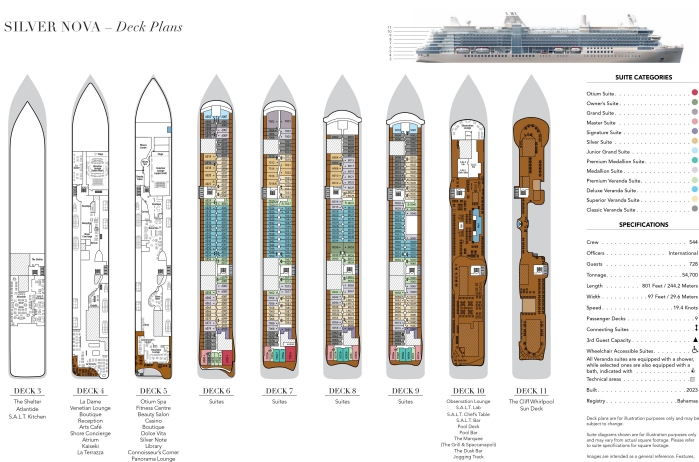
www.small-cruise-ships.com

small-cruise-ships.com

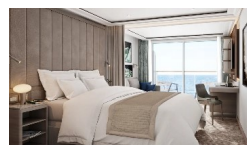
info@small-cruise-ships.com

INSIDE YOUR SHIP

SILVER NOVA – Deck Plans



Classic Veranda

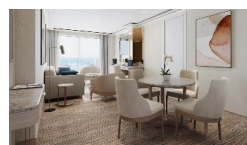


Deluxe Veranda

Grand 1 Bedroom



Junior Grand 1 Bedroom



Junior Grand 2 Bedroom

Medallion

Owner 1 Bedroom

Premium Medallion

Signature

Master

Otium

Owner 2 Bedroom

Premium Veranda

Silver

The Small Cruise Ship Collection

www.small-cruise-ships.com

01432 507 280 (within UK)

info@small-cruise-ships.com | small-cruise-ships.com



The Small Cruise
Ship Collection

www.small-cruise-ships.com

small-cruise-ships.com

info@small-cruise-ships.com

PRICING

14-Oct-2025 to 28-Oct-2025

Superior Veranda	£12089 GBP pp
Classic Veranda	£11555 GBP pp
Medallion	£17249 GBP pp
Premium Medallion	£19869 GBP pp
Otium	£45739 GBP pp
Owner 1 Bedroom	£42659 GBP pp
Junior Grand 1 Bedroom	£21255 GBP pp
Premium Veranda	£13169 GBP pp
Grand 1 Bedroom	£33265 GBP pp
Master	£32035 GBP pp
Owner 2 Bedroom	£54519 GBP pp
Signature	£30339 GBP pp
Deluxe Veranda	£12629 GBP pp
Junior Grand 2 Bedroom	£31649 GBP pp
Silver	£22715 GBP pp



01432 507 280 (within UK)

info@small-cruise-ships.com | small-cruise-ships.com