



15 DAYS LUXURY AUSTRALIA & NEW ZEALAND CRUISE - MELBOURNE TO AUCKLAND

Join us as we explore Australia's stunning scenery and varied culture as we sail from Melbourne to Cairns. You'll start with a day at sea which takes you to Eden for whale spotting. Explore iconic Sydney then it's on to Brisbane and Mooloolaba via more onboard R&R.; Enjoy the beauty of K'gari before blue skies on Silver Nova and the picturesque Whitsunday Islands. Trips to Townsville, Cooktown and Port Douglas follow, before arrival in Cairns.



ITINERARY

Days 0 - 1 - Pre Cruise & Melbourne

- _ ****Pre Cruise Benefits**** _
- _ ****Private Executive Transfers**** _
- _ ****International flights - Economy class**** _
- _ ****or Business Class upgrade**** _



The Small Cruise Ship Collection

www.small-cruise-ships.com

small-cruise-ships.com

info@small-cruise-ships.com

_ **Airport transfers** _

Australia's metropolitan cultural capital is a refined, contemporary and richly liveable city - which has a blend for every taste. The smells of freshly ground, artisan coffees fill the streets of this hip, youthful city, which is generously sprinkled with fine dining establishments, art galleries, and absorbing museums. With an airy outdoor lifestyle, Melbourne is a vibrant global hub of fashion, fun and festivities. Multicultural and diverse, Victoria's capital is crisscrossed by narrow alleys and splashed with street art. It's fair to say Melbourne's bearded baristas take their coffees seriously. Settle in to sample the unique coffee culture that is an essential part of Melbourne life. Looking for something a little stronger? The city's rooftop bars come alive with clinking cocktails as the sun sets. A world leader in culinary arts, take your seat at award-winning restaurants, and sample world foods alongside delicious wines, cultivated in the vineyards of the surrounding valleys. Savour a glass while cruising the arching Yarra River, for an unbeatable introduction to Melbourne. An outdoor city, it's no surprise that Melbourne is one of Australia's sporting giants. The vast bowl of Melbourne Cricket Ground serves as the city's sporting cathedral - squeezing in over 100,000 fans and hosting various sports on its hallowed, oval turf. Whether it's the rumble of hoofs during the Melbourne Cup, revs of engines during the Formula One, or thwacks of tennis balls during the Australian Open - few places can boast such a comprehensive list of high-profile sporting appeals.

Day 2 - Day at sea

Days at sea are the perfect opportunity to relax, unwind and catch up with what you've been meaning to do. So whether that is going to the gym, visiting the spa, whale watching, catching up on your reading or simply topping up your tan, these blue sea days are the perfect balance to busy days spent exploring shore side.

Days 3 - 4 - Hobart, Tasmania

Mount Wellington's looming, cloud-wisped form is an ever-present sight as you explore booming Hobart, the cosmopolitan capital of Australia's most southerly state. A former British penal colony, nowadays Australia's second-oldest city is a place to live the free and easy life. Encircled by dramatic cliffs, landscaped gardens and rolling vineyards, Hobart is also well stacked with cultural pursuits including museums, and respected - if controversial - galleries plastering new and old art to their walls. With fresh sea breezes and a fabulous location, Hobart is a creative place, where you can browse the produce of local artisans in Saturday's massive Salamanca Market - which draws visitors from all across Tasmania and beyond. Eat at waterfront restaurants, or rise up Mount Wellington's slopes to appreciate the remoteness of Hobart's location. From this elevated platform, you can look down across views of flowing forests, undulating mountains and endless ocean swallowing up the city. Further away, animal sanctuaries introduce you to the island's famous inhabitants, including the famous Tasmanian devil. Thirsty? Hobart has a long brewing tradition - so enjoy a refreshing ale poured from

The Small Cruise Ship Collection
www.small-cruise-ships.com

01432 507 280 (within UK)

info@small-cruise-ships.com | small-cruise-ships.com



The Small Cruise Ship Collection

www.small-cruise-ships.com

small-cruise-ships.com

info@small-cruise-ships.com

the country's oldest brewery. The climate's blend of generous sunshine and cool Antarctic breezes helps Hobart to produce its acclaimed wines, and thick clumps of pinot noir grapes hang from vineyards dotted along the valleys nearby. Taste the wines, accompanied by a platter of artisan cheese and sausage. Whiskey aficionados aren't left in the cold either, with international award-winning distilleries close by.

Days 5 - 7 - Day at sea

Days at sea are the perfect opportunity to relax, unwind and catch up with what you've been meaning to do. So whether that is going to the gym, visiting the spa, whale watching, catching up on your reading or simply topping up your tan, these blue sea days are the perfect balance to busy days spent exploring shore side.

Day 8 - Dunedin (Port Chalmers)

The south-easterly coast of New Zealand's wild southern island is a haven for outdoor adventures, with masses of raw scenic beauty and thrilling coastline. Heading the Otago Harbour, Dunedin is a cosmopolitan city of culture and architectural splendour, with a distinctly tartan flare. Settled by the Scots in 1848, the romantically misty valleys and moody landscapes, continue to capture the hearts of visitors to these distant shores. Searing bagpipes echo down the streets in the Edinburgh of the South, which wears its Scottish origins proudly. Gothic revival architecture is scattered liberally, including the magnificent university - with its glorious clocktower - and the city's grand cathedral. Head to the elegant Octagon to see the statue to

Robert Burns, whose nephew was a city founder. The railway station is perhaps the pick of this city's many artistic structures. Its glowing gardens and pretty mosaics add extra detail to the elegant, gingerbread building. It's also the perfect jumping-off point for romantic rail adventures along the coastline. The melodramatic coastline of the Otago Peninsula boasts dramatic cliffs and sea-sprayed beaches, as well as an abundance of animals. Explore cliffs laced with tunnels and hidden walkways, to get you up close and personal with Yellow-eyed penguins. Sea lions and seals also sprawl out on windswept beaches, drifting in and out of indulgent dozes. The south island's second-largest city regularly receives a top-up of youthful energy thanks to its healthy student population. Not that Dunedin is lacking a distinctly quirky personality of its own, as showcased by the event where locals race thousands of chocolate orbs down the world's steepest street - Baldwin Street. Museums in the city tell of Chinese influences, as well as the stories of early Maori settlers. Round off an active day sampling a South Island institution - an icy beer from Speight's Brewery.

Day 9 - Lyttelton (Christchurch)

New Zealand's 'Garden City' is a place of quiet streets, leafy parks and beautiful tree-lined boulevards. Christchurch has an unmistakable English flavour to it, and serves as the gateway to southern New Zealand's natural wonders. The rebuild of the country's oldest city continues apace - following the earthquakes that devastated it in 2011 - and the South Island's biggest city is now blossoming, having evolved into a confident and cultural powerhouse. Colourful street art adds an edge to the city, while shiny new bars and restaurants contribute to the

The Small Cruise Ship Collection
www.small-cruise-ships.com

01432 507 280 (within UK)

info@small-cruise-ships.com | small-cruise-ships.com



The Small Cruise Ship Collection

www.small-cruise-ships.com

small-cruise-ships.com

info@small-cruise-ships.com

sense of revitalisation and renewal. Visit museums, and take tours to learn more of the reconstruction, which has made incredible progress in recent years. The old-time charm of a punt on the River Avon is still a quintessential Christchurch experience. Sail amid weeping willows drooping to the water, as you drift through a blur of colours in the botanical gardens. Surrounded by extinct volcanoes, soaring lakes, and the rolling farmlands of the Canterbury Plains, spectacular scenery sprawls around the city. Pay a visit to the Southern Alps' snow-covered peaks, the stunning hot pools and rushing streams of Hanmer Springs, or the Hector's dolphins who swim at Akaroa. A city that has faced immense challenges - both natural and manmade - over the last decade, it's hard not to feel inspired by Christchurch's defiant character and friendly people, who share an open and welcoming outlook that shines stronger than ever.

Day 10 - Wellington

Sprawling around a hook-shaped peninsula, Wellington is a vibrant and energetic seaside capital. A compact, well-stocked city of buzzing bars and chatting cafes, New Zealand's capital is a bright and breezy place with an infectious, easy-going atmosphere. Known as the creative hub of the South Pacific, there are shows to see, art installations to enjoy, and rich flavours to savour here. The sounds of rare and beautiful birdlife fill the hills around the city, and the bush of the green belt provides easy-to-access sanctuary, strolls and cycle rides. The Botanical Gardens break up the buildings, even more, while an iconic, cherry-red cable car rumbles up Wellington's slope to the city's best viewpoint, looking out over the city's scenic harbour from above. Zealandia has provided an urban home for rare and

endangered birdlife, bringing many species back from the brink. Varied museums cover everything from Maori traditions to earthquake simulations and even the real-life Kraken - a displayed colossal squid. Wellington is only New Zealand's third-biggest city, but spend some time here and you'll realise that's a blessing. Eminently strollable, you can stop in at countless cool cafes to top up your caffeine levels whenever your energy is flagging - the smell of a fresh artisan espresso is never far away. The wines grown nearby are revered, and the city's craft beers are also making waves. Wander the breezy waterfront, and admire the surfers riding the wind-whipped rollers of the self-proclaimed 'coolest little capital in the world'.

Day 11 - Napier

Sip the fine wines of legendary producers, visit Cape Kidnappers' crowds of birdlife, and wander the stylish streets of the world's art deco capital, during your time in handsome Napier. Located on the huge arc of Hawke's Bay, Napier enjoys a generous Mediterranean style climate and a breezy cafe culture. A green, outdoor town, wander Marine Parade, which borders the rich blue Pacific and invites you to stroll along a tree-lined two-mile seafront. Take the gentle hike up to Bluff Hill, for panoramic views over the lively Napier Port and out towards Cape Kidnappers - given its name following a clash between Captain Cook's settlers and the local Maori population. Here you'll encounter one of the world's largest mainland gannet colonies creating a colourful cacophony by the sea. Set on sheer cliffs, the golden-headed birds are an incredible sight, swirling overhead and dancing before you. The city's renowned Art Deco architecture glows in the sunshine of New Zealand's

The Small Cruise Ship Collection
www.small-cruise-ships.com

01432 507 280 (within UK)

info@small-cruise-ships.com | small-cruise-ships.com



The Small Cruise Ship Collection

www.small-cruise-ships.com

small-cruise-ships.com

info@small-cruise-ships.com

North Island. Built following the devastating 7.8 magnitude earthquake, which ripped through the region in 1931. The rebuild, in the architectural fashion of the time, has left an authentic treasure-trove of 30s style buildings. Grapes thrive in the warm, dry climate of Napier and Hawke's Bay, which is one of New Zealand's oldest wine regions. Swirl glasses in waterfront bars or head out to walk among the vineyards of pinot gris and syrah grapes, learning of the climate conditions that help add sophisticated flavour to every bottle.

Day 12 - Day at sea

Days at sea are the perfect opportunity to relax, unwind and catch up with what you've been meaning to do. So whether that is going to the gym, visiting the spa, whale watching, catching up on your reading or simply topping up your tan, these blue sea days are the perfect balance to busy days spent exploring shore side.

Day 13 - Auckland

Blending beachy recreation with all the delights of a modern, diverse and thoroughly multicultural city, Auckland sits on the lucid blue-green waters of New Zealand's north island. Known as the 'City of Sails', its two harbours will tempt you with waterfront walks, and the chance to breathe fresh sea air deep into your lungs while absorbing spectacular views of Auckland's grand harbour bridge's span. Take in the true scale of Auckland's magnificent cityscape by ascending 192 metres to the Sky Tower, and looking out over the city's gleaming silver towers, which reflect on the abundant waters below. Views over the bay

and adjacent islands await, and you can share elegant cocktails at this dizzying height, above the mingling yachts of Viaduct Harbour. Immerse yourself in the rich history and culture of the area at Auckland Art Gallery, Toi o Taki. Set beside tranquil fountains and handsomely landscaped flowerbeds of Albert Park, the French-Renaissance building houses New Zealand's most extensive art collection, and exhibits works from Mori and Pacific artists. New Zealand is world-renowned for its captivating natural scenery, and day trips across the sparkling bays, to nearby islands like Waiheke, Tiritiri Matangi, and Rangitoto, are always tempting. Discover lava caves, grape-laden vineyards and flourishing wildlife in the Hauraki Gulf's islands. You'll also find an exceptional 360-degree panorama over the city, to the horizon beyond, from the heights of ancient Mount Eden. The spectacular dormant volcano rises improbably from a city suburb, and also lends its name to Eden Park - the unusual, translucent stadium of New Zealand's mighty All Blacks.

Day 14 - Post Cruise

_ ****Post Cruise Benefits**** _
_ ****Airport transfers**** _
_ ****International flights - Economy class**** _
_ ****or Business Class upgrade**** _
_ ****Private Executive Transfers**** _

Please Note:

Itineraries are subject to change.



The Small Cruise Ship Collection

www.small-cruise-ships.com

small-cruise-ships.com

info@small-cruise-ships.com

YOUR SHIP: SILVER NOVA

YOUR SHIP:

Silver Nova

VESSEL TYPE:

LENGTH:

PASSENGER CAPACITY:

BUILT/REFURBISHED:

Silver Nova is more than a new ship, it is a Nova way of luxury travel. This modern and beautiful vessel will debut in summer 2023, and is a home away from home for up to 728 guests. Silver Nova's innovative asymmetrical design introduces the world like never before, offering an immersive destination experience to our guests. With a gross tonnage of 54,700 tons she will offer a space-to-guest ratio of 75 GRT-per-passenger becoming one of the most spacious cruise ships ever built. What's more, Silver Nova will be one of the most environmentally friendly, and thanks to her groundbreaking technological solutions, she will propel the ship into a new era of sustainable cruising. It's the Nova way to travel. S.A.L.T. Chef's Table Prepare for an intimate and interactive dining experience like no other at the S.A.L.T. Chef's Table. Indulge in a choreographed menu of small plates highlighting regional flavours and star ingredients, all accompanied by unique wines and cocktails. Per guest reservation fee of U\$180 (incl. complimentary wine & cocktail pairing). Reservations will be taken exclusively on board Silver Nova. S.A.L.T. Kitchen Are you hungry for something new? Eat your way through the places on your cruise in the S.A.L.T. Kitchen. Enjoy destination-inspired

menus, including the Terrain menu, which offers recipes and flavours specific to the port visited, and the Voyage menu, which draws inspiration from the best flavours of the voyage. Pull up a chair and savour every taste of your cruise in a vibrant and welcoming atmosphere. S.A.L.T. Kitchen is the opportunity for all guests aboard Silver Nova to experience the very lifeblood of their destination. Atlantide Atlantide offers guests our quintessential dining experience. Combining contemporary elegance and hallmark Silversea service, this classic restaurant offers our signature fine dining. Atlantide is one of our best-loved eateries, and on Silver Nova we have given it an updated design. Large picture windows, sophisticated lighting design, plus a warm colour spectrum give Atlantide a blend of high-end and whispered luxury. The menu prides itself on superb ingredients and sublime flavour combinations, from caviar to lobster to gorgeous, melt in the mouth deserts. La Terrazza Our hallmark Italian restaurant is as varied as the food-loving country itself. La Terrazza aboard Silver Nova offers an unparalleled destination dining experience, from its expansive floor-to-ceiling windows to its large, outdoor terrace. Enjoy all the tastes of the different regions, including the best homemade pasta, fresh antipasto, bowls of steaming risotto, hearty ragu and delicious tiramisu. Be sure to try one of the bold wines from the cellar, to wash it all down. La Dame Indulge in new epitome of French fine dining aboard Silver Nova, where culinary heritage meets modern innovation. Immerse yourself in an exquisite gastronomic experience showcasing deep, balanced flavours, from curated tasting menus to a la carte selections paired with thoughtfully curated wine selection. Per guest reservation fee of

The Small Cruise Ship Collection
www.small-cruise-ships.com

01432 507 280 (within UK)

info@small-cruise-ships.com | small-cruise-ships.com



The Small Cruise Ship Collection

www.small-cruise-ships.com

small-cruise-ships.com

info@small-cruise-ships.com

US\$160 (incl. complimentary wine pairing). Kaiseki Experience the harmony of flavours and aesthetics with our enhanced Kaiseki dining experience. Delight in the fusion of Washoku's culinary heritage and health benefits, where each meticulously crafted dish is a work of art. Explore the depth and diversity of Japanese spirits with our exclusive selection of sake and Japanese whiskeys or savour a refreshing alternative from our delightful tea selection or cocktails. Per guest reservation fee of US\$80 (incl. complimentary sake, Japanese whiskeys or TWG tea and tea cocktails selection). Silver Note Where do you go if you want great food and a brilliant atmosphere in a relaxed and sophisticated setting? Silver Note of course! Harkening back to the old school days of dinner and dancing, this venue embodies a feeling of fun and sense of glamour that is unequalled in the industry. Jazz bands and soul singers play live as you sample delicate tapas style dishes with a gourmet twist. We guarantee a superlative night of entertainment in the gorgeously designed dinner venue. The Grill Silversea's much-loved casual dining restaurants serves a delectable range of burgers and salads by day, and turns into our famous Hot Rocks table BBQ concept by night. Found in our brand new eating venue The Marquee, The Grill is quite simply, the best place to eat between sea and sky. If you like flavoursome meals cooked to perfection, a casual laid back atmosphere and OMG views, then The Grill is the answer to your prayers. Spaccanapoli Nothing says Italy quite as well as a hot, fresh pizza. Spaccanapoli is a slice of Naples, where you'll taste deliciously thin, freshly made pizzas, topped with creamy mozzarella and minimalist toppings. The light and airy pizzeria forms part of our new al-fresco eatery The Marquee, and is the perfect choice for diners who want to be dazzled by our talented pizzaiolos spinning the dough in the open-air kitchen. Whether you want a light lunch or to share a slice with friends over an

aperitivo, it's always the right time for Spaccanapoli. The Pool Deck Enjoy a reimagined space where you can relax, refresh and rejuvenate on decks 10 and 11. Ample sunbeds for everyone, more space than ever before and the largest pool in the fleet - which offers exceptional 270° unhampered views - are just the beginning. The upper level sun deck is perfectly placed for those who want a quieter space to relax, and still enjoy those incredible, expansive views that are the hallmark of Silver Nova. But it is The Cliff Whirlpool, an infinity edge, glass fronted whirlpool, that really makes The Pool Deck something special. The Dusk Bar With an emphasis on the destination, panoramic views connects you with the world beyond on The Dusk Bar. This superb open-air sky bar provides plenty of space for guests to enjoy a pre or post dinner drink, while drinking in the jaw dropping 270-degree, panoramic views from the stern. The Dusk Bar's blessed combination of idyllic atmosphere and lovely drinks will guarantee to tick your boxes time after time. Whether you're enjoying a Spritz in South America, a cocktail in the Caribbean or a night cap in the Mediterranean, we think The Dusk Bar's unobstructed views give you a new perspective on sunsets at sea. The Marquee The expansive, attractive Marquee houses two of our greatest dining successes. Thanks to Silver Nova's groundbreaking asymmetrical design, we have been able to create an exciting new al fresco dining venue. The Marquee incorporates both The Grill and Spaccanapoli—two of Silversea's existing signature venues, which offer guests our trademark 'hot rocks' culinary concept as well as what are surely the best pizzas at sea. The Marquee will welcome guests in a relaxed atmosphere, serving casual fare by day and dinner under the stars by night. Arts Cafe The Arts Cafe offers a cultural setting for eating, drinking and socialising, as well as a chance to lose yourself while reading up on all your favourite artists and art.

The Small Cruise Ship Collection
www.small-cruise-ships.com

01432 507 280 (within UK)

info@small-cruise-ships.com | small-cruise-ships.com



The Small Cruise Ship Collection

www.small-cruise-ships.com

small-cruise-ships.com

info@small-cruise-ships.com

Enjoy healthy snacks and smoothies plus hot and cold drinks, juices, pastries and sandwiches in a light and airy space. Pop in for a late breakfast or afternoon snack, along with real Italian espresso plus a great range of tea. S.A.L.T. Bar Nothing says authentic experience better than Silver Nova's S.A.L.T. Bar. Get a taste for the authentic and settle down to enjoy locally-inspired cocktails and drinks. How can you go wrong with a Rum Punch in Barbados, a Pastis over ice in Marseille or a Pisco Sour in Lima? Nothing unites new faces and old friends in quite the same way. Be inspired to find your perfect locally-inspired beverage at the S.A.L.T. Bar and let in the colour and flavours of your journey rush in. S.A.L.T. Lab Welcome to the S.A.L.T. Lab, an interactive space where guests can deep-dive into local culinary heritage and techniques. Join our talented chefs and learn how your region's food is central to its culture. Engage in your destination through workshops, lectures and cooking demonstrations for an authentic souvenir not available in any shop. The S.A.L.T. Lab is not just about food and flavour; it is a unique place where holistic destination immersion gives an entirely new dimension to travelling. This is where the magic happens! The Shelter The Shelter is our newest pre and post dinner cocktail venue. Settle in amid an intimate and elegant setting, resplendent with sophisticated lighting, inviting sofas and stunning wraparound bar. Strategically located on deck three, the atmospheric hideaway opens onto the Atrium, creating an openness and connection to the other neighbouring venues. We promise you'll fall in love with one of the best bars on board while our talented team of mixologists mix and shake our range of signature and bespoke cocktails. With it is the perfect destination, warm smiles and legendary Silversea service, get set for unforgettable nights in The Shelter. Dolce Vita Our main bar has been newly reimagined for Silver Nova! Dolce

Vita has of course kept her legendary charm, inspired cocktails, stylish decor and comfortable seating, but a central bar now means the warm ambience is better than ever! Oozing Italian glamour, Dolce Vita is a relaxed, refined bar with a nightly piano player playing all your favourite tunes. Perfect for pre-dinner aperitivi, or even a post-dinner cocktail, Dolce Vita is truly the beating heart of social life on board. Panorama Lounge From early morning to late at night, the Panorama lounge offers everything you could wish for. A peaceful retreat that is the perfect place to break away to, a social place to meet and greet old friends, or an evening venue to partake in a cocktail as you sit back and watch the world go by. Sink into the plush seats and come evening, enjoy listening to the gentle sounds of a pianist, or the invigorating beats of our in-house DJ. Connoisseur's Corner Our smoking lounge aboard Silver Nova is our latest venue where cigar-lovers can buy and sample some of the world's finest Havanas, Cohibas, Partagas, Montecristos, Ramon Allones and Bolivars. Combining all the elements of cigar culture both indoors and on its stylish terrace, the Connoisseur's Corner is where aficionados can meet and mingle to share their iconic passion. Observation Lounge Set on the highest level at the very top of the ship, this is a quiet space for reading and reflection while being dazzled by the undulating seascapes that are constituent to life on board. Borrow a book from the in-house library, read the papers or just embrace the tranquillity of being at sea. The Venetian Lounge The grandeur and magic of music and theatre. The experience of being transported by performance. That satisfying feeling of seeing an evening show ... Welcome to Venetian Lounge, a place where the arts of theatre and music meet with full-scale productions and feature films. Paying tribute to a golden age of glamour, Venetian Lounge offers belle-epoque style cabaret seating, with

The Small Cruise Ship Collection
www.small-cruise-ships.com

01432 507 280 (within UK)

info@small-cruise-ships.com | small-cruise-ships.com

The Small Cruise Ship Collection

www.small-cruise-ships.com

small-cruise-ships.com

info@small-cruise-ships.com

intimate tables and chairs subtly placed between the rows of comfortable tiered banquettes. As the stage lights are dimmed, soak up the atmosphere, relax and enjoy a night of dazzling sights and sounds. Atrium Located on deck 4, the Atrium is the beating heart of Silver Nova. Inspired by Roman architecture, The Atrium magnificent windows floods our central meeting areas with abundant natural light. The area is home to both the Arts Cafe and The Shelter, as well as main service areas such as the Reception, Shore Concierge and Future Cruise Sales. The Atrium's enormous glass wall stretches over two decks, guaranteeing a deep connection with your destination whether at sea or docked in port. Boutique Exceptional shopping experiences do not end in the cosmopolitan cities we visit. Silversea's striking new shipboard boutiques, reimagined and redesigned are stunning modern design spaces befitting the finest creations from legendary designers. Carefully selected partners onboard Silversea's duty-free boutiques offers our guests a carefully curated selection of cutting edge fashions, jewellery, accessories, fine perfumes, cosmetics and Silversea Logo collection all at duty-free prices. Otium Spa Finding relaxation is one the of the principle aims of taking a cruise, so why not join us in the Otium Spa for guaranteed indulgence? Turn off your phone, slip on your robe and get ready for a bit of me time. Whether you need to unwind with a massage, perk up your skin with a facial or work up a sweat in sauna and steam room, Otium Spa offers the very latest in beauty therapy. Make every day a special occasion in Otium Spa. Casino Let the fun begin! Channel your inner James Bond and enjoy a flutter at a variety of table games including American Roulette, Blackjack and Poker as Silver Nova glides silently through the waves. An assortment of multi-game, multi-denominational reel and video slot machines are also available. Prepare yourself for a luxurious

and exhilarating experience with every turn of a card and spin of the wheel. Game on! Fitness Centre With state of the art Technogym® equipment, free weights and speciality classes, the Fitness Centre brings together elite design with programs that are specifically created for your body type and needs. With personal trainers available for individual sessions, training here is more a five-star experience for all levels of fitness and experience. And with the best view that you'll ever get whilst working out, there are definitely no



more excuses ...

The Small Cruise
Ship Collection
www.small-cruise-ships.com

01432 507 280 (within UK)

info@small-cruise-ships.com | small-cruise-ships.com

The Small Cruise Ship Collection

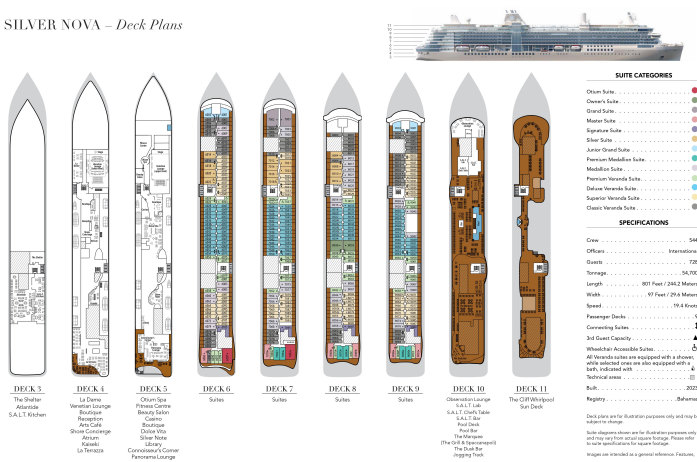
www.small-cruise-ships.com

small-cruise-ships.com

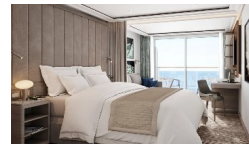
info@small-cruise-ships.com

INSIDE YOUR SHIP

SILVER NOVA – Deck Plans



Classic Veranda



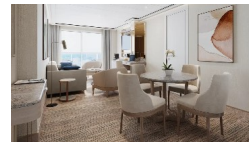
Deluxe Veranda



Grand 1 Bedroom



Junior Grand 1 Bedroom



Junior Grand 2 Bedroom

Master

Medallion

Otium

Owner 1 Bedroom

Owner 2 Bedroom

Premium Medallion

Premium Veranda

Signature

Silver

The Small Cruise Ship Collection

www.small-cruise-ships.com

01432 507 280 (within UK)

info@small-cruise-ships.com | small-cruise-ships.com



The Small Cruise
Ship Collection

www.small-cruise-ships.com

small-cruise-ships.com

info@small-cruise-ships.com

PRICING

29-Nov-2025 to 12-Dec-2025

Master	£15915 GBP pp
Owner 2 Bedroom	£30345 GBP pp
Junior Grand 2 Bedroom	£22135 GBP pp
Junior Grand 1 Bedroom	£13465 GBP pp
Medallion	£12905 GBP pp
Superior Veranda	£10205 GBP pp
Deluxe Veranda	£10765 GBP pp
Otium	£20145 GBP pp
Owner 1 Bedroom	£19279 GBP pp
Grand 1 Bedroom	£16169 GBP pp
Premium Medallion	£13059 GBP pp
Classic Veranda	£9639 GBP pp
Signature	£14945 GBP pp
Silver	£13925 GBP pp
Premium Veranda	£12295 GBP pp



The Small Cruise
Ship Collection

www.small-cruise-ships.com

01432 507 280 (within UK)

info@small-cruise-ships.com | small-cruise-ships.com