



The Small Cruise  
Ship Collection

[www.small-cruise-ships.com](http://www.small-cruise-ships.com)

[small-cruise-ships.com](http://small-cruise-ships.com)

[info@small-cruise-ships.com](mailto:info@small-cruise-ships.com)

## WILD NATURE BETWEEN ARGENTINA AND THE FALKLAND ISLANDS

This 15-day cruise takes you on a deep-dive to discover surprising and curious wildlife in an exceptional and pristine natural setting. Board L'Austral for a great adventure that will take you from Tierra del Fuego to the Falkland Islands, from the Chubut province to the bustling capital of Argentina. After setting sail from Ushuaia, you will chart a course for the legendary Cape Horn, where the Atlantic and Pacific oceans meet in a tumult of rough seas, before sailing toward Isla de los Estados for an unforgettable journey. The island is home to the famous Lighthouse at the End of the World, after which a Jules Verne novel was named. You will leave Tierra del Fuego in your wake to discover the magnificent Falkland Islands over five unforgettable days. As you sail in this archipelago of two hundred islands, you will be escorted by sei whales. Composing the wild beauty of the shorelines are beaches of white sand, jagged cliffs, windswept moors, and tall grass swaying with the wind. This is the perfect setting for the black-browed albatrosses watching from above, the Gentoo and king penguins, the elephant seals, sea lions and fur seals. This is the ideal season for spotting the young, curious and spirited adolescents that are preparing to leave their parent. L'Austral is the first cruise ship to cross the Falkland Sound, a winding channel separating the archipelago's two main islands. On board, admire the spectacle of endless moors interspersed by the bays and coves punctuating the coastline. The scenery soon shifts, as the mountainous landscapes give way to the arid steppes of the Chubut province in Argentina. After a stop in the charming Camarones, renowned for its prawns, you will explore the Valdes Peninsula. In this wildlife sanctuary, you might be able to watch

orcas hunt young elephant seals on the beaches as thousands of Magellanic penguins look on. The eared seals yawn indolently, the guanacos gallop elegantly, and the skunk dolphins swim peacefully. The majestic beauty of the natural environment is awe



-inspiring.

### ITINERARY

Day 1 BUENOS AIRES

The day before embarkation - Buenos Aires Meet and greet at the hotel by our local representative. Check-in from late



## The Small Cruise Ship Collection

[www.small-cruise-ships.com](http://www.small-cruise-ships.com)

[small-cruise-ships.com](http://small-cruise-ships.com)

[info@small-cruise-ships.com](mailto:info@small-cruise-ships.com)

morning. Lunch on your own and time at leisure in the afternoon. Dinner. Overnight at the hotel.

### Day 2 USHUAIA

Embarkation Day - Buenos Aires/Ushuaia An early morning breakfast will be served before leaving to the airport for you flight Buenos Aires - Ushuaia. Transfer to the airport. Flight Buenos Aires/Ushuaia selected by PONANT in economy class. Approximate flight duration: 3 hours, 30 min. Meet and greet at the airport (English-speaking assistance). Capital of Argentina's Tierra del Fuego province, Ushuaia is considered the gateway to the White Continent and the South Pole. Nicknamed "El fin del mundo" by the Argentinian people, this city at the end of the world nestles in the shelter of mountains surrounded by fertile plains that the wildlife seem to have chosen as the ultimate sanctuary. With its exceptional site, where the Andes plunge straight into the sea, Ushuaia is one of the most fascinating places on earth, its very name evocative of journeys to the unlikely and the inaccessible...

### Day 3 SAILING AROUND CAPE HORN

It's at the meeting point between the Atlantic and Pacific oceans that you enter Chilean Patagonia where you head for the Tierra del Fuego archipelago and its famous Cape Horn. From the top of its impressive 425-metre high cliff, South America's southernmost tip has, for many centuries, seen merchant ships from the world over passing by. Because of its legendary storms and rough seas, getting round this cape has gone down in history as a challenge for all seafarers.

### Day 4 SAILING ALONG ISLA DE LOS ESTADOS

Mountainous and rugged, the Isla de los Estados reveals the last ripples of the Andean cordillera. At the extreme far-east of the Tierra del Fuego, this tiny Argentinean island edged with deep, narrow bays, is a real nature sanctuary. From the sea, admire its relief, covered with a dense and inaccessible forest, and the rich wildlife that peoples its waters (Magellanic penguins, Commerson's dolphins, etc.). This mysterious island is home to the lighthouse that inspired Jules Verne's Lighthouse at the end of the world - and you may be lucky enough to see it during your journey.

### Day 5 BLEAKER ISLAND

The name of the island, a corruption of the word "breaker", is in reference to the waves that break on the shores of this land exposed to the turbulence of the Atlantic Ocean. On the southeastern edge of the Falkland Islands, the swells pounds the low cliffs of this narrow strip of land interspersed with vast beaches of white sand or pebbles. Covered in pasture where a few sheep and bovines roam, the island is, in part, a National Nature Reserve. From gentoo penguins to king penguins, blackish oystercatchers, and large colonies of imperial shags, a total of some fifty bird species live here. In a Zodiac dinghy or on foot, discover the beauty of the Falklands with this unique port of call.

### Day 6 PORT STANLEY & SAILING IN THE FALKLAND SOUND



The Small Cruise Ship Collection

[www.small-cruise-ships.com](http://www.small-cruise-ships.com)

**01432 507 280** (within UK)

[info@small-cruise-ships.com](mailto:info@small-cruise-ships.com) | [small-cruise-ships.com](http://small-cruise-ships.com)





## The Small Cruise Ship Collection

[www.small-cruise-ships.com](http://www.small-cruise-ships.com)

[small-cruise-ships.com](http://small-cruise-ships.com)

[info@small-cruise-ships.com](mailto:info@small-cruise-ships.com)

Situated at the far eastern end of the Falklands' largest island, Port Stanley, is the capital of this remote archipelago in the South Atlantic, composed of nearly 700 islands and islets. In 1764, Louis Antoine de Bougainville settled the first pioneers here and the port grew rapidly. Placed under the Spanish crown in 1767, then under British sovereignty since 1833, the town has retained some South American features fused with the Victorian style that punctuate the city, and the houses with their colourful roofs brighten the moorland landscapes with their windy and harsh climate reminiscent of the Scottish islands of Orkneys or Shetland. In front of the Cathedral, built in 1933, an arch made of whale jaw bones reminds us that Port Stanley was once a whaling port. Between the two main lands of the Falkland Islands, West Falkland and East Falkland, your ship will cut a path to the heart of these remote islands. For the first time, a cruise ship will sail on the Falkland Sound, a channel where the deep blue of the water merges with the distinctive green of the peat-covered moors. Admire this peaceful prairie landscape punctuated by coves and bays which you will discover as you sail along.

### Day 7 CARCASS ISLAND & THE NECK, SAUNDERS ISLAND

Situated in the north-west of the Falklands, Carcass Island was named after the ship HMS Carcass, which visited the island in the late 18th century. Its landscapes, combining steep rocks, sheer cliffs, wild expanses and white-sand beaches, form a rich and varied panorama that amateur or experienced bird watchers will appreciate. On this island, one of the few where no predators have been introduced, numerous species of birds live,

breed and are born in total serenity. Due to the fresh, windy and humid subarctic oceanic climate, a fauna and flora similar to those of Patagonia, situated 460 km (286 miles) away, thrive here. You could get the chance to observe emperor, royal, Adelie or southern rockhopper penguins. The Neck is a narrow stretch of land connecting the two sides of Saunders Island, located on the north-western edge of the Falklands. You'll safely enter these blustery surroundings with the assistance of your naturalist guides. And once there, a reward awaits you: a veritable paradise of endless shoreline lapped by turquoise waters. Several bird species, also attracted to this stunning location, have settled here. At the other end of The Neck, you'll encounter Magellanic penguins, southern rockhopper penguins, black-browed albatross and king penguins, all basking in the beauty of their surroundings.

### Day 8 GRAVE COVE & NEW ISLAND

Make your way through the turbulent Woolly Gut strait and emerge in the stillness of Grave Cove. Located in the northern edge of the Falkland Islands, this bay owes its name to the vestiges of whalers' graves that overlook the beach. As you step off the boat and onto the white-sand beach, you might find yourself escorted by a few hospitable Commerson's dolphins, elegantly adorned in black and white. A stroll along the grassy dunes will lead you to a vast plain of lush green grass, tended by a few sheep. On the other side of the island you'll find one of the largest gentoo penguin colonies in the area. With some luck, you'll also glimpse a sea lion scouring the waves for his next meal. This island with its distinctive jagged relief is located on the western edge of the Falkland Islands and is home to a tiny



The Small Cruise Ship Collection

[www.small-cruise-ships.com](http://www.small-cruise-ships.com)

**01432 507 280** (within UK)

[info@small-cruise-ships.com](mailto:info@small-cruise-ships.com) | [small-cruise-ships.com](http://small-cruise-ships.com)



## The Small Cruise Ship Collection

[www.small-cruise-ships.com](http://www.small-cruise-ships.com)



[small-cruise-ships.com](http://small-cruise-ships.com)

[info@small-cruise-ships.com](mailto:info@small-cruise-ships.com)

village of two families. Step onto the golden sand of its flower-lined beaches, beside which an old stone house still stands, and you'll feel like you've entered a natural paradise. A narrow pathway weaves around typical Falkland moorlands. Follow it and in under 20 minutes you'll find yourself at the heart of a colony of southern rockhopper penguins, black-browed albatross and imperial shags. It's the perfect opportunity to watch the albatross swoop down from the cliffs and skim the waves that crash against the rocks on the exposed side of the island.

### Day 9 WEST POINT ISLAND & STEEPLE JASON ISLAND

It is no coincidence that West Point Island was once called Albatross Island. Like everywhere else in the Falkland Islands, seabirds have taken up residence here. Among them, the huge colonies of black-browed albatrosses observe your arrival by zodiac dinghy, from the surrounding cliffs. The gentoo and king penguins are also curious about travellers arriving by sea. The turquoise waters of the island wash up against the undulating shores, where the stretches of yellow gorse brighten the scenery composed by this wild natural environment. On the hill overlooking the bay stand the dwellings of the few people still living in this remote land. The calm and serenity of the island is only broken by the sound of the wind. If one island of the Falklands calls for use of superlatives, it would undoubtedly be Steeple Jason. Located at the extreme north-west corner of the Falklands, the island is home to the largest black-browed albatross colony in the world. You'll be rapt at the sight of these magnificent birds with black-contoured eyes. Photographers will delight in immortalising the endless ballet of the albatross, who

soars majestically and then alights awkwardly amidst nests. Caracaras, gentoo penguins and Magellanic penguins are also abundantly present, as if to prove to the visitor that here nature is king.

### Day 10 AT SEA

During your day at sea, make the most of the many services and activities on board. Treat yourself to a moment of relaxation in the spa or stay in shape in the fitness centre. Depending on the season, let yourself be tempted by the swimming pool or a spot of sunbathing. This day without a port of call will also be an opportunity to enjoy the conferences or shows proposed on board, to do some shopping in the boutique or to meet the PONANT photographers in their dedicated space. As for lovers of the open sea, they will be able to visit the ship's upper deck to admire the spectacle of the waves and perhaps be lucky enough to observe marine species. A truly enchanted interlude, combining comfort, rest and entertainment.

### Day 11 CAMARONES

Camarones is a small town located in Chubut Province, in Southern Argentina. Chubut stretches from the Atlantic to the Andes, the coast is marked by high cliffs and sandy beaches. Before the Spaniards arrived in the Americas, nomadic indigenous people had inhabited the Patagonia region. In the 17th and 18th centuries, Spanish missionaries settled. Camarones is the head town of the Florentino Ameghino department which is noted for its wealth of geological and paleontological features. People are attracted to the region by



The Small Cruise Ship Collection

[www.small-cruise-ships.com](http://www.small-cruise-ships.com)

**01432 507 280** (within UK)

[info@small-cruise-ships.com](mailto:info@small-cruise-ships.com) | [small-cruise-ships.com](http://small-cruise-ships.com)





its lengthy unspoiled coastline and its fauna. Camarones means 'shrimps' in Spanish, once the town was well-known for the abundance of shrimps in its bay.

#### Days 12 - 13 PUERTO MADRYN

On the shores of the Atlantic Ocean, in the Argentinian province of Chubut, stands the city of Puerto Madryn nestling in the Golfo Nuevo and surrounded by wild and abundant nature. You will be able to follow the narrow strip of land formed by the isthmus for a few kilometres, to reach the Valdes Peninsula nature reserve, a UNESCO World Heritage Site. Its microclimate, protected from the extreme conditions of the Southern Atlantic, makes this an ideal breeding ground for southern right whales, but also for southern elephant seals, southern sea lions, and orcas. You may also get the chance to spot numerous birds, Magellanic penguins, guanacos and Patagonian maras living in this desert steppe.

#### Days 14 - 15 AT SEA

During your day at sea, make the most of the many services and activities on board. Treat yourself to a moment of relaxation in the spa or stay in shape in the fitness centre. Depending on the season, let yourself be tempted by the swimming pool or a spot of sunbathing. This day without a port of call will also be an opportunity to enjoy the conferences or shows proposed on board, to do some shopping in the boutique or to meet the PONANT photographers in their dedicated space. As for lovers of the open sea, they will be able to visit the ship's upper deck to admire the spectacle of the waves and perhaps be lucky enough

to observe marine species. A truly enchanted interlude, combining comfort, rest and entertainment.

#### Day 16 BUENOS AIRES

A port city built on the south-western shore of the Rio de la Plata, between the Atlantic Ocean and the vast Argentine Pampas, Buenos Aires is a unique city in Latin America. Nicknamed "the Little Paris of South America", the Argentine capital is a clever blend of architecture with European influences and a joyful Latin American atmosphere. Designed on an orthogonal grid plan, it has 48 districts, all of which are as charming as they are different, with a range of styles such as Belle Époque, gothic and baroque. With its markets overflowing with treasures, its legendary cultural and architectural heritage, and tango providing its background music, the Argentine capital will delight you on every street corner.

#### Please Note:

We are privileged guests in these extreme lands where we are at the mercy of weather and ice conditions. Landings on certain sites and the observation of certain wildlife cannot be guaranteed. They vary from day to day, making each PONANT cruise a unique experience. The Captain and the Expedition Leader will make every effort to ensure that your experience is as rich as possible, while complying with the safety rules and instructions imposed by the IAATO.



The Small Cruise  
Ship Collection

[www.small-cruise-ships.com](http://www.small-cruise-ships.com)



[small-cruise-ships.com](http://small-cruise-ships.com)

[info@small-cruise-ships.com](mailto:info@small-cruise-ships.com)

## YOUR SHIP: L'AUSTRAL

**YOUR SHIP:**

**L'Austral**

**VESSEL TYPE:**

**142 metres. Passenger Capacity:  
264 (200 in Antarctica). Built:**

**LENGTH:**

**2011**

**PASSENGER CAPACITY:**

**BUILT/REFURBISHED:**

Luxury Expedition / Cruise Ship This superb mega-yacht with 132 cabins is the result of the expertise of the Italian Fincantieri shipyard and French sophistication, as interpreted by designer Jean-Philippe Nuel. L'Austral has a unique atmosphere, a subtle blend of luxury, intimacy and well-being. A sleek silhouette softened by elegantly smooth contours and large, arched windows opening up to the sea and the light: so many features come together to give L'Austral her distinctive shape. Precious materials, discreet elegance and a perfect balance between chic and casual, combine to make you feel as if you are on your own private yacht. A design blending tradition and innovation, where a nautical mood has been subtly recreated. Precious materials in smoothing neutral tones are brought to life with splashes of cheerful reds. So many personal touches create the spirit of a "private yacht". Suites and staterooms You can expect magnificent ocean views as 124 staterooms and suites have balconies. Individually-controlled airconditioning · Cabin layout: kingsize bed, or twin beds, communicating cabins available (children welcome) · Minibar · Flat screen satellite TV · iPod™

players · Desk with stationery · Electronic safe · French bath products · Dressing table and hairdryer · Bath robes · Satellite direct line telephone · 110/220 volts · 24hr room service · WiFi · Balcony Cuisine Loyal to the great French tradition, the haute cuisine on board is worthy of the finest restaurants, where discreet, attentive service is the hallmark. Choose from two restaurants for breakfasts, lunch and dinner. The Gastronomic Restaurant is situated on Le Liberte Deck and serves you French and international cuisine accompanied by fine wine. On the Grill Restaurant, you have the opportunity to eat outside and enjoy buffet lunch and themed dinner. Life On Board Whether you want to join other guests in the theatre or games area (Wii™ consoles, etc), or relax on your own in a quiet corner of the library, L'Austral has been designed to meet the needs of every guest. Everything has been done to preserve the independence of each guest to suit their personal tastes: lounges for lectures and shows, a spa in partnership with Sothys™, but also more intimate spaces such as the library and internet corner. Comfortable cabins, nearly all with private balcony, are available for families either as triples or as communicating cabins. There is also a games area with Wii™ consoles, children's menus, and a baby-sitting service. Just as if you were on a private yacht, your time is your own to do as you please. Fitted with the latest equipment (Kinesis Wall, running machine) and in partnership with the famous Sothys™ brand, the Beauty Centre on L'Austral welcomes you for some unforgettable moments of relaxation and pampering (beauty treatments, hairdresser). Wheelchairs 3 specially adapted wheelchair cabins (Deck 3 = Superior cabin no. 307, no balcony, Deck 4 = Prestige Cabin no. 407 - with



[www.small-cruise-ships.com](http://www.small-cruise-ships.com)

**01432 507 280** (within UK)

[info@small-cruise-ships.com](mailto:info@small-cruise-ships.com) | [small-cruise-ships.com](http://small-cruise-ships.com)





balcony and Deck 5 = Prestige Cabin no 509, with balcony) and lifts to all decks/areas. Details Please click the following links to read more about Ponant and the other Ponant



cruise ships.



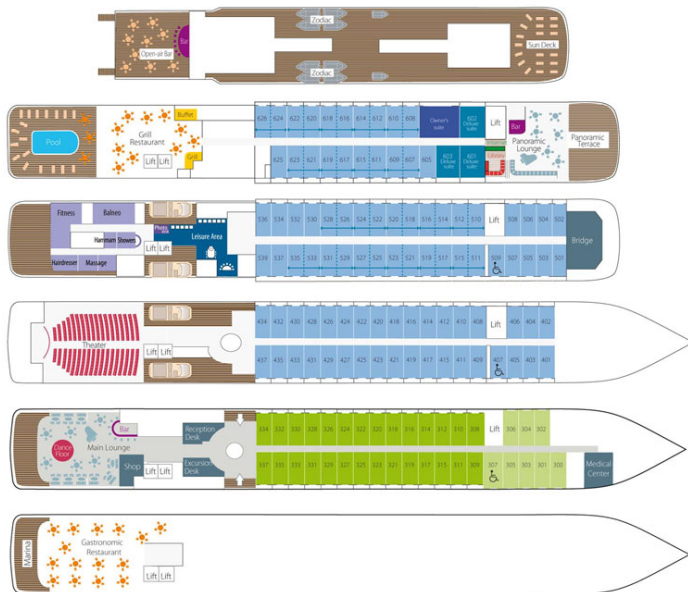
# The Small Cruise Ship Collection

[www.small-cruise-ships.com](http://www.small-cruise-ships.com)

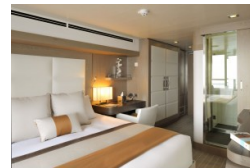
[small-cruise-ships.com](http://small-cruise-ships.com)

[info@small-cruise-ships.com](mailto:info@small-cruise-ships.com)

## INSIDE YOUR SHIP



Superior Stateroom. From







The Small Cruise  
Ship Collection

[www.small-cruise-ships.com](http://www.small-cruise-ships.com)

[small-cruise-ships.com](http://small-cruise-ships.com)

[info@small-cruise-ships.com](mailto:info@small-cruise-ships.com)

## PRICING

28-Feb-2025 to 15-Mar-2025

Superior Stateroom. From	£8815 GBP pp
--------------------------	--------------

**ADDITIONAL CHARGES:** Port Taxes & Fees 1040 AUD pp



The Small Cruise  
Ship Collection

[www.small-cruise-ships.com](http://www.small-cruise-ships.com)

**01432 507 280** (within UK)

[info@small-cruise-ships.com](mailto:info@small-cruise-ships.com) | [small-cruise-ships.com](http://small-cruise-ships.com)