



The Small Cruise Ship Collection

www.small-cruise-ships.com

small-cruise-ships.com

info@small-cruise-ships.com

hopefully in the company of green sea turtles. In the afternoon, we visit the youngest and most pristine island of the archipelago, Fernandina, one of many people's all-time favourites. Punta Espinoza has an amazing combination of barrenness and abundant wildlife. Highlights include hawks, penguins, the flightless cormorant and astounding views of the surrounding volcanic landscapes.

Day 3 - Sunday - Urbina Bay and Tagus Cove (Isabela Island)

After breakfast, we disembark at Urbina Bay, on the western side of Isabela Island, the result of an uplifting of the ocean floor. Here you can find corals, shells, and large and very colourful Galápagos land iguanas, giant tortoises (occasionally). Navigating the Bolívar Channel, there are good chances of spotting species of whales. On the northwest of Isabela, secluded Tagus Cove provided a favourite anchorage for pirates and whalers over the centuries, and today makes a great visitor site. An uphill hike takes us to the back of Darwin Crater, filled with salt water. We can snorkel or ride kayaks amid the dramatic landscape before our hike.

Day 4 - Monday - Rábida Island and Cerro Dragón-Dragon Hill (Santa Cruz Island)

In the morning, we disembark at Rábida Island's red-coloured beach. A stroll along the beach allows us to observe marine iguanas, mockingbirds, yellow warblers and several species of Darwin's finches. This is a great place to snorkel from the beach. For those non-snorkelers, we can ride our glass-bottom boat for a submarine exploration. The north shore of Santa Cruz hosts the fascinating landscapes of Cerro Dragón (Dragon Hill). Our walk includes circling a brackish water lagoon frequented by lagoon birds, while further inland, the trail offers a beautiful view of the bay and the western islands of the archipelago, as well as

the chance of observing land iguanas.

Day 5 - Tuesday - Puerto Ayora, Charles Darwin Research Station and Highlands of Santa Cruz Island

The morning visit heads to the Charles Darwin Research Station and the giant tortoise pens within an impressive giant prickly-pear cactus forest. These are the headquarters of scientific investigation, conservation and the National Park administration. A delicious lunch is served at the poolside of the Finch Bay Eco Hotel. After lunch, we wind up to the highlands of Santa Cruz Island by vehicle. This is a great place to look for the brilliant Vermilion Flycatcher and the endemic Scalesia trees. From December to mid-April and July to December a visit to observe giant tortoises in the wild may be included, if weather conditions are good.

Day 6 - Wednesday - Post Office Bay/Punta Cormorant (Floreana Island)

After breakfast, we land at Post Office Bay to visit the historic barrel that has served as a post office in the archipelago for over two centuries. Panga rides along the maze of channels on Floreana's north shore can also be enjoyed. There's great snorkelling from the beach as well. Before disembarking at Punta Cormorant we can snorkel or ride our glass-bottom boat along the coast of an extinct cone called "Champion Islet". Our visit to Punta Cormorant takes in an olivine-crystal beach for an easy walk by a brackish water lagoon where bird species like greater flamingos may be observed. On the other side of the island, we come to a white-sand beach where sea turtles come out at night to nest.

Day 7 - Thursday - Baltra

Our journey ends at Baltra Island, where we transfer to the airport to take the flight back to the mainland. Baltra's flat



The Small Cruise Ship Collection

www.small-cruise-ships.com

01432 507 280 (within UK)

info@small-cruise-ships.com | small-cruise-ships.com



substrate (due to its uplifted origin) is the reason why the island was chosen back in the 1940s as the location to building an airport.

Please Note:

Galápagos Itineraries are subject to change due to weather, logistical, Galápagos Park regulations or operational reasons. · Please remember that the exact route and programme may vary according to weather and ocean conditions and the wildlife we encounter. It's also subject to change without previous notice due mainly to readjustment of the National Park policies and regulations. \- Dry landing: guests step from the dinghy onto rocks or a dock. \- Wet landing: as the dinghy edges onto a sandy beach, guests step into around 20 cm (8 inches) of water and wade ashore.



The Small Cruise Ship Collection

www.small-cruise-ships.com



small-cruise-ships.com

info@small-cruise-ships.com

YOUR SHIP: LA PINTA

YOUR SHIP:	La Pinta
VESSEL TYPE:	Small Ship
LENGTH:	63 metres
PASSENGER CAPACITY:	48 (in 24 cabins)
BUILT/REFURBISHED:	1983 / refurbished 2007



After intense days of wildlife exploration, yacht La Pinta provides a haven of relaxation and tranquility with tastefully appointed accommodations and all the facilities for a stylish yet informal ambiance. A full week discovery trip to the Galapagos Islands aboard La Pinta allows encounters with unique fauna, like the famous giant Galapagos tortoises in the wild, land and marine iguanas, flamingos, penguins, blue-footed boobies and the famous Darwin's finches. La Pinta guests will cover all aspects of the Galapagos: discovery, adventure, environmental interpretation, aquatic activities, relaxation, superb service and great dining. Naturalist Guides enhance their interpretative skills with the use of state-of-the-art-expedition equipment. Our staff embraces a spirit of adventure, while at the same time ensures that you always travel in comfort and safety.



The Small Cruise Ship Collection

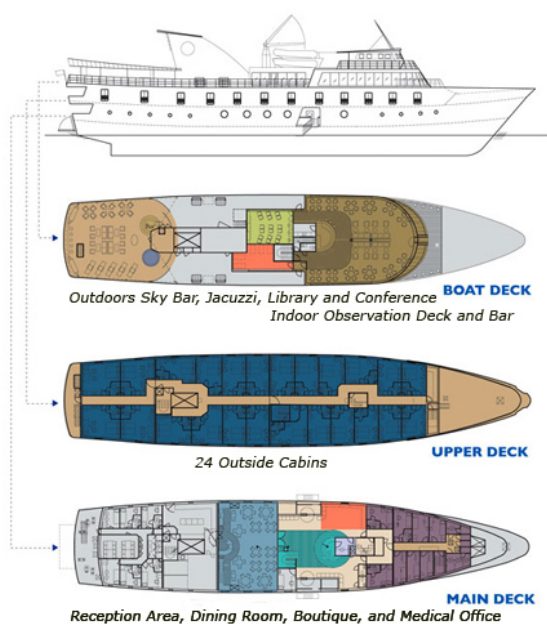
www.small-cruise-ships.com



small-cruise-ships.com

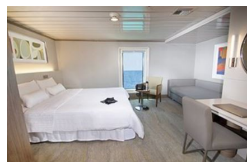
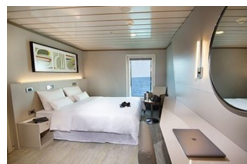
info@small-cruise-ships.com

INSIDE YOUR SHIP



Luxury Cabin/Captain Cabin

Luxury Plus Cabin/Admiral Cabin





The Small Cruise Ship Collection

www.small-cruise-ships.com

small-cruise-ships.com

info@small-cruise-ships.com

PRICING

24-May-2024 to 30-May-2024

Luxury Plus Cabin/Admiral Cabin	£6153 GBP pp
Luxury Cabin/Captain Cabin	£6153 GBP pp

30-May-2024 to 05-Jun-2024

Luxury Cabin/Captain Cabin	£6153 GBP pp
Luxury Plus Cabin/Admiral Cabin	£6153 GBP pp

07-Jun-2024 to 13-Jun-2024

Luxury Plus Cabin/Admiral Cabin	£6153 GBP pp
Luxury Cabin/Captain Cabin	£6153 GBP pp

13-Jun-2024 to 19-Jun-2024

Luxury Cabin/Captain Cabin	£6153 GBP pp
Luxury Plus Cabin/Admiral Cabin	£6153 GBP pp

21-Jun-2024 to 27-Jun-2024

Luxury Plus Cabin/Admiral Cabin	£6153 GBP pp
Luxury Cabin/Captain Cabin	£6153 GBP pp

27-Jun-2024 to 03-Jul-2024

Luxury Cabin/Captain Cabin	£6153 GBP pp
Luxury Plus Cabin/Admiral Cabin	£6153 GBP pp

05-Jul-2024 to 11-Jul-2024

Luxury Plus Cabin/Admiral Cabin	£6153 GBP pp
Luxury Cabin/Captain Cabin	£6153 GBP pp

11-Jul-2024 to 17-Jul-2024

Luxury Plus Cabin/Admiral Cabin	£6153 GBP pp
Luxury Cabin/Captain Cabin	£6153 GBP pp

19-Jul-2024 to 25-Jul-2024

Luxury Cabin/Captain Cabin	£6153 GBP pp
Luxury Plus Cabin/Admiral Cabin	£6153 GBP pp

25-Jul-2024 to 31-Jul-2024

Luxury Cabin/Captain Cabin	£6153 GBP pp
Luxury Plus Cabin/Admiral Cabin	£6153 GBP pp

02-Aug-2024 to 08-Aug-2024

Luxury Plus Cabin/Admiral Cabin	£6153 GBP pp
Luxury Cabin/Captain Cabin	£6153 GBP pp

08-Aug-2024 to 14-Aug-2024

Luxury Cabin/Captain Cabin	£6153 GBP pp
Luxury Plus Cabin/Admiral Cabin	£6153 GBP pp

16-Aug-2024 to 22-Aug-2024



The Small Cruise Ship Collection

www.small-cruise-ships.com

01432 507 280 (within UK)

info@small-cruise-ships.com | small-cruise-ships.com



The Small Cruise Ship Collection

www.small-cruise-ships.com



small-cruise-ships.com

info@small-cruise-ships.com

Luxury Cabin/Captain Cabin	£6153 GBP pp
----------------------------	--------------

Luxury Plus Cabin/Admiral Cabin	£6153 GBP pp
---------------------------------	--------------

22-Aug-2024 to 28-Aug-2024

Luxury Plus Cabin/Admiral Cabin	£6153 GBP pp
---------------------------------	--------------

Luxury Cabin/Captain Cabin	£6153 GBP pp
----------------------------	--------------

30-Aug-2024 to 05-Sep-2024

Luxury Plus Cabin/Admiral Cabin	£6153 GBP pp
---------------------------------	--------------

Luxury Cabin/Captain Cabin	£6153 GBP pp
----------------------------	--------------

05-Sep-2024 to 11-Sep-2024

Luxury Cabin/Captain Cabin	£6153 GBP pp
----------------------------	--------------

Luxury Plus Cabin/Admiral Cabin	£6153 GBP pp
---------------------------------	--------------

13-Sep-2024 to 19-Sep-2024

Luxury Plus Cabin/Admiral Cabin	£6153 GBP pp
---------------------------------	--------------

Luxury Cabin/Captain Cabin	£6153 GBP pp
----------------------------	--------------

19-Sep-2024 to 25-Sep-2024

Luxury Cabin/Captain Cabin	£6153 GBP pp
----------------------------	--------------

Luxury Plus Cabin/Admiral Cabin	£6153 GBP pp
---------------------------------	--------------



The Small Cruise Ship Collection

www.small-cruise-ships.com

01432 507 280 (within UK)

info@small-cruise-ships.com | small-cruise-ships.com



The Small Cruise Ship Collection

www.small-cruise-ships.com

small-cruise-ships.com

info@small-cruise-ships.com

PRICING

27-Sep-2024 to 03-Oct-2024

Luxury Cabin/Captain Cabin	£6153 GBP pp
Luxury Plus Cabin/Admiral Cabin	£6153 GBP pp

03-Oct-2024 to 09-Oct-2024

Luxury Plus Cabin/Admiral Cabin	£6153 GBP pp
Luxury Cabin/Captain Cabin	£6153 GBP pp

11-Oct-2024 to 17-Oct-2024

Luxury Cabin/Captain Cabin	£6153 GBP pp
Luxury Plus Cabin/Admiral Cabin	£6153 GBP pp

17-Oct-2024 to 23-Oct-2024

Luxury Cabin/Captain Cabin	£6153 GBP pp
Luxury Plus Cabin/Admiral Cabin	£6153 GBP pp

25-Oct-2024 to 31-Oct-2024

Luxury Plus Cabin/Admiral Cabin	£6153 GBP pp
Luxury Cabin/Captain Cabin	£6153 GBP pp

31-Oct-2024 to 06-Nov-2024

Luxury Cabin/Captain Cabin	£6153 GBP pp
Luxury Plus Cabin/Admiral Cabin	£6153 GBP pp

08-Nov-2024 to 14-Nov-2024

Luxury Cabin/Captain Cabin	£6153 GBP pp
Luxury Plus Cabin/Admiral Cabin	£6153 GBP pp

14-Nov-2024 to 20-Nov-2024

Luxury Cabin/Captain Cabin	£6153 GBP pp
Luxury Plus Cabin/Admiral Cabin	£6153 GBP pp

22-Nov-2024 to 28-Nov-2024

Luxury Cabin/Captain Cabin	£6153 GBP pp
Luxury Plus Cabin/Admiral Cabin	£6153 GBP pp

28-Nov-2024 to 04-Dec-2024

Luxury Cabin/Captain Cabin	£6153 GBP pp
Luxury Plus Cabin/Admiral Cabin	£6153 GBP pp

06-Dec-2024 to 12-Dec-2024

Luxury Plus Cabin/Admiral Cabin	£6153 GBP pp
Luxury Cabin/Captain Cabin	£6153 GBP pp

12-Dec-2024 to 18-Dec-2024

Luxury Cabin/Captain Cabin	£6153 GBP pp
Luxury Plus Cabin/Admiral Cabin	£6153 GBP pp

20-Dec-2024 to 26-Dec-2024



The Small Cruise Ship Collection

www.small-cruise-ships.com

01432 507 280 (within UK)

info@small-cruise-ships.com | small-cruise-ships.com



The Small Cruise Ship Collection

www.small-cruise-ships.com



small-cruise-ships.com

info@small-cruise-ships.com

Luxury Cabin/Captain Cabin	£6153 GBP pp
----------------------------	--------------

Luxury Plus Cabin/Admiral Cabin

£6153 GBP pp

26-Dec-2024 to 01-Jan-2025

Luxury Cabin/Captain Cabin	£6153 GBP pp
----------------------------	--------------

Luxury Plus Cabin/Admiral Cabin

£6153 GBP pp

ADDITIONAL CHARGES:

Galapagos National Park
admission fee and transit Control
Card for Galapagos 120 USD pp



The Small Cruise Ship Collection

www.small-cruise-ships.com

01432 507 280 (within UK)

info@small-cruise-ships.com | small-cruise-ships.com