



## The Small Cruise Ship Collection

[www.small-cruise-ships.com](http://www.small-cruise-ships.com)



[small-cruise-ships.com](http://small-cruise-ships.com)

[info@small-cruise-ships.com](mailto:info@small-cruise-ships.com)

## NORWEGIAN VOYAGE SOUTH

On the southbound voyage from Kirkenes to Bergen, you visit Lofoten's many ports during the daytime, sail between the myriad islands of the Helgeland coast and have time to visit Nidaros Cathedral in Trondheim and sample some of the city's culinary delights.



### ITINERARY

Day 1 Ports: Kirkenes - Vardø - Båtsfjord - Berlevåg

Welcome aboard in Kirkenes! The border with Russia is only a



The Small Cruise  
Ship Collection

[www.small-cruise-ships.com](http://www.small-cruise-ships.com)

**01432 507 280** (within UK)

[info@small-cruise-ships.com](mailto:info@small-cruise-ships.com) | [small-cruise-ships.com](http://small-cruise-ships.com)



## The Small Cruise Ship Collection

[www.small-cruise-ships.com](http://www.small-cruise-ships.com)



[small-cruise-ships.com](http://small-cruise-ships.com)

[info@small-cruise-ships.com](mailto:info@small-cruise-ships.com)

few kilometres away, and the road signs in Kirkenes are in Norwegian and Russian. You can go as far as the border on one of our excursions, or how about a visit to the Snowhotel where everything is made of ice and snow? Excursions Snowhotel Kirkenes King crab with a snowmobile on the frozen fjord, Kirkenes Dog sledding in the Arctic, Kirkenes Snowmobile safari in the Arctic, Kirkenes The Russian border, Kirkenes King crab fishing in a RIB, Kirkenes

**Day 2 Ports:** Mehamn - Kjøllefjord - Honningsvåg - Havøysund - Hammerfest - Øksfjord - Skjervøy - Tromsø

The polar landscape changes as we sail towards the west and south again. The great expanses are replaced by steep peaks, and in the evening we sail into Tromsø. You can take a stroll in the midnight sun or under the Northern Lights and explore the nightlife of the city dubbed "The Paris of the North". Excursions Snowmobile trip in the polar night, Mehamn Breakfast at the North Cape Plateau, Honningsvåg City Sightseeing in the Northernmost Town, Hammerfest

**Day 3 Ports:** Finnsnes - Harstad - Risøyhamn - Sortland - Stokmarknes - Svolvær - Stamsund

We enter the wild, idyllic Lofoten Islands. Beneath the jagged mountains lie chalky white sandy beaches and fishing villages with a vibrant fishing industry and locals using the coastal ships for everyday trips and transport. If the weather permits, we will enter the narrow Trollfjord. There is a strong possibility of spotting sea eagles here. Excursions A taste of Vesterålen, Harstad Experience Lofoten Svolvær Golfing at Lofoten Links,

Svolvær Horse riding in Lofoten, Svolvær Brewery visit and beer tasting, Svolvær Sea eagle safari in a RIB, Svolvær Sea Eagle Safari in Trollfjorden, disembarkation from the ship Hike by the best beach in Europe, Svolvær

**Day 4 Ports:** Bodø - Ørnes - Nesna - Sandnessjøen - Brønnøysund - Rørvik

Now we have come so far south that we're crossing the Arctic Circle and sailing away from the polar night and the sunlit nights. But you can still see the Northern Lights in the winter, and it is never completely dark during the summer nights. Here you sail past a myriad of small islands, islets and skerries and past the special mountain, Torghatten, which has a hole in the middle. If you wish, you can also go on the trip to the mountain and enter the hole. Excursions Hiking at Torghatten, Brønnøysund The Norwegian salmon adventure, Brønnøysund Experience the World Heritage listed Vega Islands, Brønnøysund

**Day 5 Ports:** Trondheim - Kristiansund - Molde - Ålesund

We sail through the wide Trondheim fjord that is bounded by rolling farmland on both sides and return to the coast and the open sea. You can disembark in Kristiansund and be driven along the Atlantic Ocean Road, which has been called the world's most beautiful drive. The road meanders along islets and skerries, and afterwards you can re-embark in Molde. Excursions Trondheim and the Nidaros Cathedral Experience the Atlantic Road, Kristiansund The Atlantic Road and Bergtatt marble mine, Kristiansund

**Day 6 Ports:** Torvik - Måløy - Florø - Bergen



The Small Cruise Ship Collection

[www.small-cruise-ships.com](http://www.small-cruise-ships.com)

**01432 507 280** (within UK)

[info@small-cruise-ships.com](mailto:info@small-cruise-ships.com) | [small-cruise-ships.com](http://small-cruise-ships.com)



The last day of the tour takes you through a diverse coastal landscape of bare rocky mountains and a maze of sounds and waterways between many islands. The great fjords and glaciers are situated inland. Bergen awaits at the end of the voyage. We hope you have many good memories from your journey along the Norwegian coast with Havila Voyages, and we look forward to seeing you again.

Please Note:

Itineraries are subject to change.





## The Small Cruise Ship Collection

[www.small-cruise-ships.com](http://www.small-cruise-ships.com)



[small-cruise-ships.com](http://small-cruise-ships.com)

[info@small-cruise-ships.com](mailto:info@small-cruise-ships.com)

## YOUR SHIP: CASTOR, CAPELLA, POLARIS OR POLLUX

### YOUR SHIP:

**Castor, Capella, Polaris or Pollux**

### VESSEL TYPE:

### LENGTH:

### PASSENGER CAPACITY:

### BUILT/REFURBISHED:

The Newest, Most Eco-Friendly Ships on the Norwegian coastal route. Havila's coastal cruise ship will be home from home for a little while and you can relax and enjoy it. Cruise on the ships with decor that reflects Norwegian landscapes including the sea, the sky, mountains and glaciers. Natural materials and Nordic design creates a warm, genuine and unpretentious atmosphere, in which you are sure to feel at ease. You can enjoy the scenery gliding by outside from the ship's many public areas. Comfortable seats and panoramic windows give you the best possible views of the Norwegian coastline. Promenade deck and viewpoint If you want to feel the wind in your hair and inhale some good sea air, there's the outer deck and the viewpoint in the bow, or the promenade on Deck 8, that is long enough for a proper walk. Observation lounge The observation lounge on the top deck, Deck 9, has recliners under a glass roof, where you can look at the Northern Lights, the star-studded night sky or the midnight sun during the summer. The gym The machines in the gym are arranged in front of the window so that you can train and watch the passing landscape at the same time. Shopping Find unique clothes, books or local specialities in the shop on Deck 6, in the middle of the ship. Jacuzzi Enjoy the powerful jets

of hot water in the jacuzzi on the quarterdeck while looking out over the mountains and fjords. Sauna There is a sauna on the ships in the cloakroom area attached to the jacuzzis on Deck 8. Relax chairs Separate room with relax chairs for those who are not travelling far and do not need their own cabin. Cabins and suites Large cabins with Norwegian quality and design, where materials and colours reflect the landscape through which you will be sailing. Cafes and restaurants The ship has two restaurants and a cafe. The menus feature locally sourced food and the best that Norway has to offer. Facts about our Vessels The world's largest battery packs Four hours' sailing with zero emissions Energy-efficient hull design Locally sourced ingredients Heat recovery from the sea and cooling water Charging current from hydropower at the quay Liquid natural gas that cuts Co2 emissions by 25 % NOx emissions



reduced by 90%



The Small Cruise Ship Collection

[www.small-cruise-ships.com](http://www.small-cruise-ships.com)

**01432 507 280** (within UK)

[info@small-cruise-ships.com](mailto:info@small-cruise-ships.com) | [small-cruise-ships.com](http://small-cruise-ships.com)





# The Small Cruise Ship Collection

[www.small-cruise-ships.com](http://www.small-cruise-ships.com)



[small-cruise-ships.com](http://small-cruise-ships.com)

[info@small-cruise-ships.com](mailto:info@small-cruise-ships.com)

## INSIDE YOUR SHIP

### OUR NEW ECO-FRIENDLY SHIP

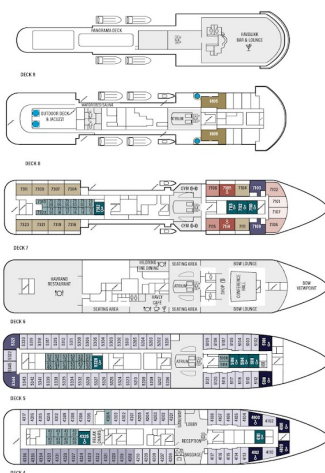
Enjoy silence, variation and comfort on board Havila Voyages. With our ships you can explore the world's most beautiful coast from the world's most eco-friendly vessels.

#### SHIP'S SPECIFICATIONS

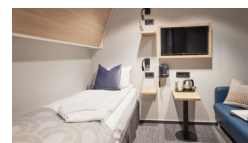
##### HAVILA CAPELLA & HAVILA CASTOR

TOTAL PASSENGERS ..... 140  
CAPACITY ..... 140 GUESTS  
Crew ..... 20  
Length ..... 22.0 m  
Width ..... 6.0 m  
Speed ..... 14.0 knots  
Range ..... 1000 nautical miles  
SHEETS ..... 1000 TONNAGE (GROSS TONNAGE)

- PUBLIC SPACES
- WATER
- WATER ACCESSIBLE
- SILENCE SUPERIOR DOUBLE
- SILENCE SUPERIOR TWIN
- SILENCE DELUXE
- SILENCE SUPERIOR ACCESSIBLE
- SILENCE DELUXE
- SILENCE DELUXE ACCESSIBLE
- SILENCE SUITES
- SILENCE SUITES



Interior. From



The Small Cruise Ship Collection

[www.small-cruise-ships.com](http://www.small-cruise-ships.com)

01432 507 280 (within UK)

[info@small-cruise-ships.com](mailto:info@small-cruise-ships.com) | [small-cruise-ships.com](http://small-cruise-ships.com)



# The Small Cruise Ship Collection

[www.small-cruise-ships.com](http://www.small-cruise-ships.com)



[small-cruise-ships.com](http://small-cruise-ships.com)

[info@small-cruise-ships.com](mailto:info@small-cruise-ships.com)

## PRICING

### 11-Jul-2025 to 16-Jul-2025

Interior. From £818 GBP pp

Seaview Superior double £3399 GBP pp

### 25-Jul-2025 to 30-Jul-2025

Interior. From £818 GBP pp

### 07-Aug-2025 to 12-Aug-2025

Interior. From £808 GBP pp

### 18-Aug-2025 to 23-Aug-2025

Interior. From £808 GBP pp

Seaview Superior cabin £1243 GBP pp

### 01-Sep-2025 to 06-Sep-2025

Interior. From £739 GBP pp

### 15-Sep-2025 to 20-Sep-2025

Interior. From £716 GBP pp

### 26-Sep-2025 to 01-Oct-2025

Interior. From £693 GBP pp

### 10-Oct-2025 to 15-Oct-2025

Interior. From £647 GBP pp

### 14-Nov-2025 to 19-Nov-2025

Interior. From £577 GBP pp

### 20-Dec-2025 to 25-Dec-2025

Interior. From £530 GBP pp

### 31-Dec-2025 to 05-Jan-2026

Interior. From £623 GBP pp

### 14-Jan-2026 to 19-Jan-2026

Interior. From £569 GBP pp

### 05-Feb-2026 to 10-Feb-2026

Interior. From £638 GBP pp

### 10-Mar-2026 to 15-Mar-2026

Interior. From £693 GBP pp

### 17-Apr-2026 to 22-Apr-2026

Interior. From £638 GBP pp

### 23-May-2026 to 28-May-2026

Interior. From £638 GBP pp

### 22-Jun-2026 to 27-Jun-2026

Interior. From £893 GBP pp

### 17-Jul-2026 to 22-Jul-2026

Interior. From £847 GBP pp

### 14-Aug-2026 to 19-Aug-2026

Interior. From £801 GBP pp

### 21-Sep-2026 to 26-Sep-2026

Interior. From £731 GBP pp

### 10-Oct-2026 to 15-Oct-2026

Interior. From £685 GBP pp



The Small Cruise Ship Collection

[www.small-cruise-ships.com](http://www.small-cruise-ships.com)

01432 507 280 (within UK)

[info@small-cruise-ships.com](mailto:info@small-cruise-ships.com) | [small-cruise-ships.com](http://small-cruise-ships.com)





## The Small Cruise Ship Collection

[www.small-cruise-ships.com](http://www.small-cruise-ships.com)



[small-cruise-ships.com](http://small-cruise-ships.com)

[info@small-cruise-ships.com](mailto:info@small-cruise-ships.com)

**01-Nov-2026 to 06-Nov-2026**

**Interior. From**

**£662 GBP pp**

**18-Dec-2026 to 23-Dec-2026**

**Interior. From**

**£569 GBP pp**



The Small Cruise  
Ship Collection

[www.small-cruise-ships.com](http://www.small-cruise-ships.com)

**01432 507 280** (within UK)

[info@small-cruise-ships.com](mailto:info@small-cruise-ships.com) | [small-cruise-ships.com](http://small-cruise-ships.com)