



The Small Cruise
Ship Collection

www.small-cruise-ships.com



small-cruise-ships.com

info@small-cruise-ships.com

VIBRANT HEARTS OF THE EAST COAST - USA CRUISE FROM NASSAU TO NEW YORK CITY

From Bahamian beaches to the Big Apple, this cruise ignites your spirit. Soak up Caribbean sun before rocketing into Florida's Space Coast. In Charleston, enjoy down-home food, antebellum architecture and Southern hospitality before arriving in dazzling NYC amid the lights of Broadway, world-famous museums, landmarks and global cuisines. From sunny isles to the city that never sleeps, experience the energy and passion of America's East Coast.



ITINERARY

DAY 0 PRE CRUISE

DAY 1 NASSAU

Nassau, the capital of The Bahamas, is a sunny and lively destination famous for beaches, such as Cable Beach and Nirvana Beach. Its rich history dating back to 1670 is told at The Pirates of Nassau Museum with tales of Blackbeard and Edward Teach, and the Pompey Museum of slavery. The pastel-coloured buildings are home to shops, restaurants, bars alongside the Fish Market and the Straw Market, thick with straw crafts and tourist trinkets.

DAY 2 PORT CANAVERAL



The Small Cruise
Ship Collection

www.small-cruise-ships.com

01432 507 280 (within UK)

info@small-cruise-ships.com | small-cruise-ships.com



The Small Cruise Ship Collection

www.small-cruise-ships.com



small-cruise-ships.com

info@small-cruise-ships.com

DAY 5 DAY AT SEA

Today as you sail, you'll bask in the endless comforts of your ship. From the deck, marvel at the dramatic sea views. Relax with a nurturing facial treatment or massage in the spa or delve into the ship's learning resources. Or, simply take refuge in your cabin and enjoy the opportunity to rest.

DAY 6-7 NEW YORK, NY

One of the world's most vibrant and exciting cities, the approach to New York City is mesmerising, as icons like the Statue of Liberty and Empire State Building come into view amid towering skyscrapers. This lively metropolis invites visitors to attend Broadway shows, appreciate masterpieces at the Met, MoMa or Guggenheim, experience the bright lights of Times Square, or enjoy leisurely strolls through Central Park and across the Brooklyn Bridge.

Please note:

Itineraries are subject to change.

Port Canaveral, located on Florida's Space Coast, is a major port near Cape Canaveral and NASA's Kennedy Space Center. At the visitor complex, bus tours offer behind-the-scenes access to facilities like the towering Vehicle Assembly Building and active launch pads. Visitors can view rockets up close at the Apollo/Saturn V Center and may catch countdowns and launches of spacecraft heading for the cosmos.

DAY 3 DAY AT SEA

Sea days are rarely dull. Take the time to sit back and let the world go by. The ship's observation decks provide stunning views of the passing ocean. A day at sea gives you the opportunity to mingle with other passengers and share your experiences of this incredible trip or head to our library which is stocked full of reference books. Get an expert's view in one of our on-board lectures or perhaps perfect your photography skills with invaluable advice from our onboard professional photographers.

DAY 4 CHARLESTON, SC

Founded in 1670, Charleston, the first British South Carolina settlement, is awash with cobbled streets, antebellum homes, gardens, and colonial landmarks like the 1770 College of Charleston, 1771 Old Exchange Building, and 1752 St. Michael's Church. Horse-drawn carriages tour the colourful Battery and City Market areas, highlighting restored shopfronts and a lively food scene. Charleston Harbor was the site of the Civil War's first shots.



The Small Cruise Ship Collection

www.small-cruise-ships.com

01432 507 280 (within UK)

info@small-cruise-ships.com | small-cruise-ships.com



The Small Cruise Ship Collection

www.small-cruise-ships.com



small-cruise-ships.com

info@small-cruise-ships.com

YOUR SHIP: VEGA

YOUR SHIP:

Vega

VESSEL TYPE:

LENGTH:

PASSENGER CAPACITY:

BUILT/REFURBISHED:

Launched in 2022, this state of the art ship has been designed to journey to off the beaten path destinations and remote polar regions in style and comfort. The ship incorporates a PC5 ice-strengthened hull combined with extra-large stabilisers to make your journey as smooth as possible. Sophisticated Elegance. We know how important outdoor space is, so our spacious, relaxing public spaces provide wide open, unobstructed views throughout the ship. The destination will always be in view. Your Wellbeing. The safety & happiness of our guests is paramount to our 120-strong crew on board as well as our passionate expedition team who'll be serving up thrilling shore excursions and lasting memories. Cabin Types. Our 76 cabins including 6 suites have all the amenities you will need to feel comfortable including dressing gowns, hairdryers, personal safes and minibars. Our stylish cabins all have desks, a dressing area and comfy seating. En suite bathrooms all feature glass-enclosed rain showers.



The Small Cruise Ship Collection

www.small-cruise-ships.com

01432 507 280 (within UK)

info@small-cruise-ships.com | small-cruise-ships.com

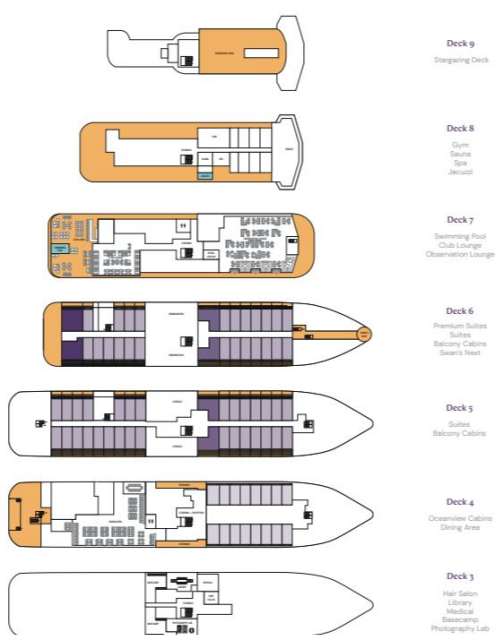
The Small Cruise Ship Collection

www.small-cruise-ships.com

small-cruise-ships.com

info@small-cruise-ships.com

INSIDE YOUR SHIP



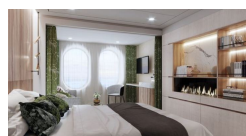
Balcony D5



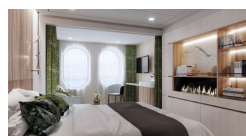
Balcony M5



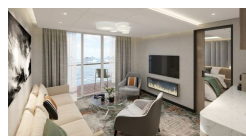
Oceanview D4



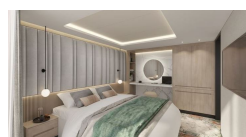
Oceanview M4



Premium Suite



Suite





The Small Cruise Ship Collection

www.small-cruise-ships.com



small-cruise-ships.com

info@small-cruise-ships.com

PRICING

09-May-2025 to 16-May-2025

Balcony M5	£4049 GBP pp
Oceanview M4	£3115 GBP pp
Balcony D5	£3839 GBP pp
Premium Suite	£5919 GBP pp
Suite	£5399 GBP pp
Oceanview D4	£2955 GBP pp



The Small Cruise
Ship Collection

www.small-cruise-ships.com

01432 507 280 (within UK)

info@small-cruise-ships.com | small-cruise-ships.com