

The Small Cruise Ship Collection

www.small-cruise-ships.com

small-cruise-ships.com

info@small-cruise-ships.com

TROPICAL ODYSSEY BETWEEN NORTH EAST AUSTRALIA AND INDONESIA

Over 16 days, fall under the spell of the beauty and richness of the Indonesian archipelago and the southern shores of Australia. Aboard Le Laperouse, take an exceptional expedition cruise with PONANT, sailing from island to island, from idyllic landscapes to unforgettable encounters. After boarding Le Laperouse in Cairns, your first destination is Lizard Island. Located at the heart of the Great Barrier Reef, this 1,000-hectare Island is home to sublime white sand beaches fringed by coral reefs teeming with life. Then, you will cross Cape York, where the Pacific and Indian oceans meet. Further north, you will discover the Asmat region, one of the most isolated and mysterious areas in the world. Then, you will sail to the heart of Triton Bay. Located within a protected marine environment in the middle of the Coral Triangle, you will enjoy an unforgettable zodiac cruise through the spectacular rainforest-capped karst islands. Le Laperouse will continue on to the Indonesian province of West Papua to give you the opportunity to admire the Kiti-Kiti Waterfall. Surrounded by lush vegetation, you will undoubtedly be tempted to swim or snorkel at the foot of this stunning natural site. In the Moluccas (Maluku Islands), dubbed the Spice Islands, you will discover Banda Neira, shaped by Dutch and Portuguese influences. After a stopover in the fabulous Barat Daya Islands, you will head for Kalabahi. This authentic destination in the Alor Archipelago provides the opportunity to interact with local people who have preserved their traditional practices and customs. You will then head to Flores before visiting your final destination of Komodo National Park. This wild and isolated island is home to the famous Komodo dragons. Your cruise will conclude in Bali, 'the island of

the gods' with its captivating charm



and grace.

ITINERARY

Day 1 CAIRNS

Washed by the Coral Sea, the harbour town of Cairns is located on Australia's north-east coast. The seafront esplanade is a popular place for locals and visitors to walk, swim and picnic under the shade of swaying palm trees. The hills surrounding Cairns form the gateway to the Queensland Rainforests, proclaimed a UNESCO World Heritage site for their fauna and

The Small Cruise Ship Collection
www.small-cruise-ships.com

01432 507 280 (within UK)

info@small-cruise-ships.com | small-cruise-ships.com



The Small Cruise Ship Collection

www.small-cruise-ships.com

small-cruise-ships.com

info@small-cruise-ships.com

flora from the Gondwana era.

Day 2 LIZARD ISLAND

Lizard Island is the northernmost resort Island on the Great Barrier Reef and boasts 24 powdery white sand beaches. Dominated by grasslands, the rugged beauty of Lizard Island contrasts sharply with the sparkling blue waters and rich fringing coral reefs surrounding the island. Lizard Island is known as Dyiigurra to the Dinggaal Aboriginal people and is regarded as a sacred place. It was used for the initiation of young males and for the harvesting of shellfish, turtles, dugongs and fish. The Dinggaal believe that the Lizard group of islands had been created in the Dreamtime. After a short zodiac ride to the beach at Watson's Bay, guests can join a guided walk, relax on the beach or snorkel in the warm clear waters and view the clam gardens...

Day 3 AT SEA

During your journey at sea, make the most of the many services and activities on board. Treat yourself to a moment of relaxation in the spa or stay in shape in the fitness centre. Depending on the season, let yourself be tempted by the swimming pool or a spot of sunbathing. This journey without a port of call will also be an opportunity to enjoy the conferences or shows proposed on board, depending on the activities offered, or to do some shopping in the boutique or to meet the PONANT photographers in their dedicated space. As for lovers of the open sea, they will be able to visit the ship's upper deck to admire the spectacle of the waves and perhaps be lucky enough to observe marine

species. A truly enchanted interlude, combining comfort, rest and entertainment.

Day 4 CAPE YORK

Cape York Peninsula is a large remote peninsula located at the tip of North Eastern Australia. The region has been described as the largest unspoiled wilderness in Australia. The relatively undisturbed eucalyptus wooded savannahs, tropical rainforests and other types of habitat are now recognised for their global environmental significance. At the tip of the peninsula lies Cape York, the northernmost point on the Australian continent, that usually takes travellers 5-7 days over some of the planet's toughest and remotest roads. The easiest way to "stand on the tip" is to take a luxury voyage, be transferred ashore by ship's zodiac directly onto the beach and walk the last 500m!

Day 5 AT SEA

During your journey at sea, make the most of the many services and activities on board. Treat yourself to a moment of relaxation in the spa or stay in shape in the fitness centre. Depending on the season, let yourself be tempted by the swimming pool or a spot of sunbathing. This journey without a port of call will also be an opportunity to enjoy the conferences or shows proposed on board, depending on the activities offered, or to do some shopping in the boutique or to meet the PONANT photographers in their dedicated space. As for lovers of the open sea, they will be able to visit the ship's upper deck to admire the spectacle of the waves and perhaps be lucky enough to observe marine species. A truly enchanted interlude, combining comfort, rest

The Small Cruise
Ship Collection
www.small-cruise-ships.com

01432 507 280 (within UK)

info@small-cruise-ships.com | small-cruise-ships.com



The Small Cruise Ship Collection

www.small-cruise-ships.com

small-cruise-ships.com

info@small-cruise-ships.com

and entertainment.

and entertainment.

Day 6 ASMAT, PAPUA

Day 8 TRITON BAY, WEST PAPUA

Occupying half the Island of New Guinea, Western New Guinea (once known as Irian Jaya) is one of the most remote and mysterious regions of the world. Even today, there are at least 44 tribes that have never had contact with the outside world. Nestled in the South West corner of the island is the Asmat region, long fabled as the realm of head-hunters and cannibals. Where ancient traditions of ancestor worship have resisted the influence of Christian missionaries. Today's expedition starts with a zodiac transfer to the village of Syuru where you will be met by a multitude of Asmat warrior canoes. Once ashore a traditional ceremony will take place. In the afternoon guests can undertake a guided walking tour of Agats township.

Triton Bay is one of three regions in Indonesia's West Papua province that comprise the Bird's Head Seascape (the other two are Raja Ampat and Cenderawasih Bay), which is now considered by marine biologists to be the epicentre of the Coral Triangle. It contains more fish and coral species than anywhere else on the planet. Its unparalleled marine biodiversity and endemism, habitat richness, and relatively intact nature of its ecosystems are unique. Join your expedition team for a zodiac voyage through the spectacular rainforest capped karst islands. Later in the day enjoy the opportunity to explore the richness of the underwater realm.

Day 7 AT SEA

Day 9 KITIKITI WATERFALL, MOMMON

During your journey at sea, make the most of the many services and activities on board. Treat yourself to a moment of relaxation in the spa or stay in shape in the fitness centre. Depending on the season, let yourself be tempted by the swimming pool or a spot of sunbathing. This journey without a port of call will also be an opportunity to enjoy the conferences or shows proposed on board, depending on the activities offered, or to do some shopping in the boutique or to meet the PONANT photographers in their dedicated space. As for lovers of the open sea, they will be able to visit the ship's upper deck to admire the spectacle of the waves and perhaps be lucky enough to observe marine species. A truly enchanted interlude, combining comfort, rest

North of Triton Bay, in the Indonesian province of West Papua, lie the Bomberai Peninsula and Sebakor Bay. A real paradise for divers, this protected, authentic and very wild area boasts an exceptional biodiversity. Here, you will be able to admire the superb Kitikiti Waterfall where you could enjoy a swim or snorkel surrounded by lush nature, both on land and under water.

Day 10 BANDA NEIRA, MALUKU ISLANDS

From age-old traditional cultures and ancient vestiges, to coral reefs and lush green jungle... The attractions of the remote Banda archipelago seem endless. Better known as the

The Small Cruise
Ship Collection
www.small-cruise-ships.com

01432 507 280 (within UK)

info@small-cruise-ships.com | small-cruise-ships.com



The Small Cruise Ship Collection

www.small-cruise-ships.com

small-cruise-ships.com

info@small-cruise-ships.com

legendary "Spice Islands" of the Ancient World, these small volcanic landmasses were the fabled prize of colonial powers for more than four centuries. Every colonial power of significance fought for control of these ten small islands that today have become largely forgotten. Walking the streets of Banda Neira is a surreal experience as your eyes are drawn to the eclectic mix of Portuguese, Dutch and British architecture, the remnants of a rich and tumultuous history. It is without doubt the most historically significant and interesting of all the "Spice Islands".

Day 11 BARAT DAYA ISLANDS

If you are looking for exoticism and authenticity, then you will be captivated by the Barat Daya Islands, an Indonesian archipelago lying to the east of the Lesser Sunda Islands, bathed by the Banda Sea and surrounded by coral reefs. With their fine sandy beaches, marine environments, preserved nature and paddy fields, these islands in the Maluku archipelago are a real concentration of the beauty South-East Asia has to offer. A lush environment in which fauna and flora flourish. Notably, there are almost 162 different bird species including four endemic ones and three endangered ones.

Day 12 KALABAHI, ALOR

The unique culture of the Alorese continues among the Takpala indigenous group who have preserved their traditional architecture and ceremonies. The island of Alor is also known as the island of a Thousand Moko's. The Moko is a small bronze kettledrum which is believed to have originated from the Dong Son culture of Vietnam. However, it remains a mystery as to how

these prehistoric Dong Son drums arrived in Alor. Local legend says that the Moko's were discovered buried in the ground, and indeed mokos are still being uncovered today. Join the expedition team and local guides for a tour by local transport to Takpala village, the Museum of a Thousand Mokos and the thriving main market of Kalabahi.

Day 13 MAUMERE, FLORES

Floresians have an ancient culture stretching back millennia before the first arrival of Europeans in search of trade opportunities. Their history is shared through oral traditions and is recreated in song and dance. The mountainous terrain of Flores has preserved the diversity of cultures and Maumere serves as the capital of the Sikka district and main trading port. Few tourists make it to Maumere with most stopping at Labuan Bajo and heading west to the islands of Komodo. Consequently, Maumere has kept its charming atmosphere, an eclectic mix of a bustling trading town and a coastal paradise. Join your expedition team and local guides for a tour by local transport to the markets and tribal villages in the hinterland of Maumere.

Days 14 - 15 KOMODO NATIONAL PARK

Between the islands of Sumbawa and Flores, Komodo National Park welcomes you to discover its natural wonders. At the very heart of the Indonesian archipelago, the three islands that form it - Komodo, Rinca and Padar - owe their renown to the famous eponymous dragons, enormous lizards over two metres long, which live in its grassy savannah. This jagged and hilly volcanic territory belonging to the Sunda Islands is a UNESCO World

The Small Cruise
Ship Collection
www.small-cruise-ships.com

01432 507 280 (within UK)

info@small-cruise-ships.com | small-cruise-ships.com



Heritage Site because of its incredible terrestrial and marine biodiversity. Admire its palette of colours, intermingling the sparkling whites of the beaches, the deep blues of the coral-filled water and the soft greens of its pastures.

Day 16 BENOA, BALI

If it's a taste of exotic authenticity you're after, prepare to be spell-bound by the island of Bali, tucked away in the heart of the Indonesian archipelago. The beauty and diversity of its landscapes, the depth and richness of its cultural heritage and the plethora of activities on offer here make Bali a little slice of heaven on Earth. The island's southern coast enthralls with its white sand beaches, its picturesque little fishing villages such as Benoa, and its hills patchworked with terraced rice paddies further inland. Nicknamed 'the Island of Gods' for its sumptuous temples, Bali is the beating heart of Indonesian Hinduism.

Please Note:

Itineraries are subject to change.



The Small Cruise Ship Collection

www.small-cruise-ships.com

small-cruise-ships.com

info@small-cruise-ships.com

YOUR SHIP: LE JACQUES CARTIER

YOUR SHIP: Le Jacques Cartier

VESSEL TYPE:

LENGTH:

PASSENGER CAPACITY:

BUILT/REFURBISHED:

Featuring innovative and environmentally-friendly equipment, elegantly designed staterooms, spacious suites with large windows, and lounge areas that open onto the outside, this new limited-capacity yacht boasting just 92 staterooms and suites will offer you a truly unique cruising experience. Le Jacques Cartier will embody refinement, intimacy and comfort. Aboard this ship that flies the French flag, you will experience the incomparable pleasure of an intimate cruise, with the possibility of exploring an ever-increasing range of destinations in an ethnic-chic ambiance with luxury service. Experience a luxurious setting where the accent is on authenticity and passion for travel. **RESTAURANTS** As it is an essential part of French culture, gastronomy will naturally have pride of place aboard this new ship. To the back of Deck 4, you will find a 260 m² panoramic restaurant which can accommodate all of our passengers in a single sitting. Designed differently to that on our other ships, this dining area, which opens onto the outside, will have a buffet of salads, desserts and cheeses at your disposal. Our discreet and attentive crew will provide table service for hot meals. In a relaxed atmosphere, an outdoor grill on Deck 3 will serve grilled meats with a variety of salads and desserts. **PUBLIC AREAS** Le

Jacques Cartier has many common areas that are designed and equipped to meet all of your needs while preserving the intimacy of each passenger. A 140 m² reception area includes: A reception/concierge desk, An excursions desk, The ship's administrative services, The sales office, manned by our Guest Relations Officer, Our 50 m² boutique which sells clothing, jewellery, beauty products, postcards and various accessories, Toilets accessible to passengers with reduced mobility. A new hydraulic platform with adjustable height provides: Easier boarding than on any other cruise ship, Easier Zodiac embarkation and disembarkation for expeditions, Easier access to the sea for swimming and practising various water sports such as kayaking or paddle-boarding. A pool deck offering: A pool with a panoramic view, equipped with a counter-current swimming system, A pleasant solarium, An outdoor bar and lounge with armchairs and sofas. A 200 m² main lounge which can accommodate all of our passengers to share convivial moments and to host activities organised during the day or evening. Lastly, a theatre that seats 188, equipped with: The latest sound and lighting technology, A LED wall as the stage backdrop, for the projection of high-resolution images and videos. Please click the following links to read more about Ponant and the other Ponant

The Small Cruise Ship Collection
www.small-cruise-ships.com

01432 507 280 (within UK)

info@small-cruise-ships.com | small-cruise-ships.com





The Small Cruise
Ship Collection

www.small-cruise-ships.com

small-cruise-ships.cominfo@small-cruise-ships.com



cruise ships.

The Small Cruise Ship Collection

www.small-cruise-ships.com

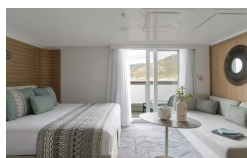
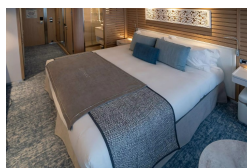
small-cruise-ships.com

info@small-cruise-ships.com

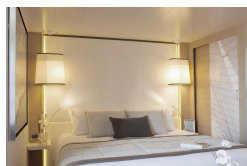
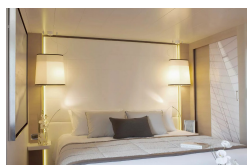
INSIDE YOUR SHIP



DELUXE STATEROOM



DeLuxe Stateroom



Deluxe Suite

OWNER'S SUITE

PRESTIGE STATEROOM DECK 4

PRESTIGE STATEROOM DECK 6

PRESTIGE SUITE DECK 6

Prestige Deck 4

Prestige Deck 5 Suite

Prestige Deck 6 Suite

DELUXE SUITE

Deluxe Stateroom

GRAND DELUXE SUITE

Owner's Suite

PRESTIGE STATEROOM DECK 5

PRESTIGE SUITE DECK 5

PRIVILEGE SUITE

Prestige Deck 5

Prestige Deck 6

Prestige Stateroom - Deck 4

The Small Cruise Ship Collection
www.small-cruise-ships.com

01432 507 280 (within UK)

info@small-cruise-ships.com | small-cruise-ships.com



Prestige Stateroom - Deck 5

Prestige Stateroom - Deck 6

Prestige Suite - Deck 5

Prestige Suite - Deck 6

The Small Cruise Ship Collection

www.small-cruise-ships.com

small-cruise-ships.com

info@small-cruise-ships.com

PRICING

07-Oct-2025 to 22-Oct-2025

Owner's Suite	£24559 GBP pp
Deluxe Suite	£14969 GBP pp
Prestige Suite - Deck 6	£21359 GBP pp
DeLuxe Stateroom	£8675 GBP pp
Prestige Stateroom - Deck 6	£10715 GBP pp
Prestige Stateroom - Deck 4	£9639 GBP pp
Prestige Suite - Deck 5	£20299 GBP pp
Prestige Stateroom - Deck 5	£10125 GBP pp
Superior Stateroom	£7995 GBP pp

05-Dec-2025 to 20-Dec-2025

DeLuxe Stateroom	£7859 GBP pp
Prestige Suite - Deck 6	£19279 GBP pp
Prestige Stateroom - Deck 5	£9165 GBP pp
Superior Stateroom	£7249 GBP pp
Deluxe Suite	£13525 GBP pp
Prestige Suite - Deck 5	£18325 GBP pp
Prestige Stateroom - Deck 4	£8735 GBP pp
Prestige Stateroom - Deck 6	£9695 GBP pp
Owner's Suite	£23990 GBP pp

08-Dec-2025 to 23-Dec-2025

DELUXE SUITE	£12809 GBP pp
PRESTIGE SUITE DECK 5	£17335 GBP pp
PRIVILEGE SUITE	£19145 GBP pp
PRESTIGE SUITE DECK 6	£18239 GBP pp
PRESTIGE STATEROOM DECK 4	£8279 GBP pp
PRESTIGE STATEROOM DECK 6	£9185 GBP pp
PRESTIGE STATEROOM DECK 5	£8685 GBP pp
DELUXE STATEROOM	£7455 GBP pp
GRAND DELUXE SUITE	£21039 GBP pp
OWNER'S SUITE	£25347 GBP pp

04-Dec-2026 to 19-Dec-2026

Prestige Deck 5	£7395 GBP pp
Prestige Deck 4	£7055 GBP pp
Superior Stateroom	£5875 GBP pp
Prestige Deck 5 Suite	£14665 GBP pp
Prestige Deck 6	£7815 GBP pp
Deluxe Suite	£10859 GBP pp
Deluxe Stateroom	£6365 GBP pp
Prestige Deck 6 Suite	£15425 GBP pp

ADDITIONAL CHARGES:

Port Taxes and Fees 1110 AUD pp