

The Small Cruise Ship Collection

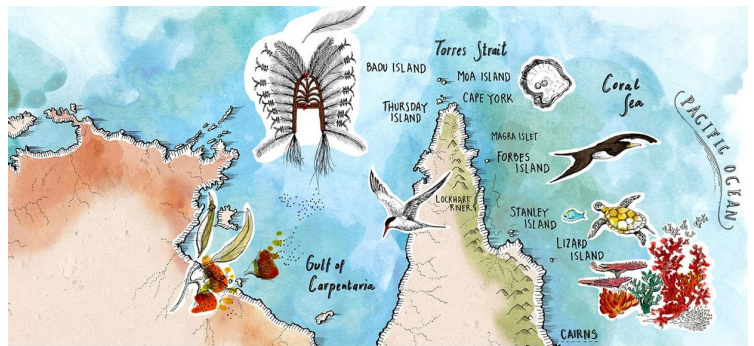
www.small-cruise-ships.com

small-cruise-ships.com

info@small-cruise-ships.com

TORRES STRAIT & CAPE YORK - HORN ISLAND TO CAIRNS (CORAL DISCOVERER)

This new itinerary onboard Coral Discoverer focuses on an immersive exploration of the remote Torres Strait Islands, where unique nature, Indigenous culture and history abound. The voyage traverses the Tropical North Queensland coastline and unique islands and reefs of the Great Barrier Reef, reaching the tip of Australia at Cape York, and extending to the cultural crossroads of the Torres Strait Islands. The Torres Islands are unlike anywhere else on earth. Each of the almost 300 islands are unique and very few are inhabited. Few visitors come to these islands due to limited transport options and permits, but those joining us onboard will enjoy this rare opportunity hassle-free. We have been visiting these islands as part of our Cape York and Arnhem Land expeditions for over 2 decades and have developed strong friendships with locals who welcome us to this little slice of paradise.



ITINERARY

DAY 1: DEPART HORN ISLAND

Option for a pre-cruise tour of Horn Island. Board Coral Discoverer at Horn Island 31 October and 21 November at 4pm for 5pm departure. Enjoy afternoon tea onboard and a chance to meet your fellow travellers as we set sail southwards. This evening join guests and the friendly crew as we enjoy the Captain's welcome drinks and sit down to the first of many delicious dinners. There are daily flights to Cairns from Horn Island Airport. These are not included in the cruise fare.

DAY 2: TORRES STRAIT ISLAND - EXPEDITION STOP

In true expedition style, we will follow the conditions on the day to choose another Torres Strait Island to spend the day visiting, with a chance for cultural experiences and to relax in the pristine and scenic natural surrounds. Potential islands we may visit include Hammond, Prince of Wales, Mer or Erub depending on the conditions on the day.

DAY 3: MOA ISLAND



The Small Cruise Ship Collection

www.small-cruise-ships.com

small-cruise-ships.com

info@small-cruise-ships.com

Visit the art centre and join in print, weaving and jewellery making workshops with local artists. Watch a traditional dance performance, listen to the gorgeous harmonies of the local singers.

DAY 4: BADU ISLAND

In the morning, we visit the indigenous art centre to watch printmakers at work, with the opportunity to purchase prints that catch your eye. Enjoy traditional kai kai (Traditional Lunch) prepared by the local community – a feast of locally caught crayfish, fresh & curried fish. Spend the afternoon swimming at a local beach, hosted by traditional owners.

DAY 5: CAPE YORK & THURSDAY ISLAND (WAIBEN)

Step ashore at the northernmost point of the Australian mainland continent as the sun rises, and sip champagne to welcome the new day. Join an informative tour of Thursday Island to learn about its interesting pearling history and multicultural influences. At Thursday Island we also have free time to explore all the island has to offer, including Gab Titui Cultural Centre, and local shopping.

DAY 6: FORBES ISLAND & REMOTE ISLETS

Enjoy a day exploring Forbes Island, an excellent spot for swimming, scuba, snorkelling or glass-bottom boat tours from the pristine sandy beaches. Hear the story of beche-de-mer fisherman Frederick Lancaster who inhabited this island and visit his gravesite. We also have an opportunity to go beachcombing at a nearby remote island, possibly Magra, Saunders, or Sir Charles Hardy.

DAY 7: TIJOU REEF & RESTORATION ISLAND

Enjoy snorkel, scuba and glass-bottom boat opportunities of the remote Tijou Reef. Visit Restoration Island or Resto, as the locals call it. Here Captain Bligh of the infamous Mutiny on the Bounty made his first landfall after a long ocean crossing from Tonga, in May 1789. He named it Restoration Island because the food they found (oysters and native fruits) greatly restored their spirits and because that date was Oak Apple Day, the anniversary of the restoration of King Charles II. Today Restoration Island is not just a National Park; one-third of the island is leased to David Glasheen, a former mining tycoon, who, after losing his fortune in the Black Friday market crash, decided to live a solitary existence on the island, and has done so for over 2 decades. It is an idyllic coastal island with a granite and volcanic peak 116 metres in height and a beautiful shark tooth-shaped beach spit where guest will enjoy water activities and time to explore the island.

DAY 8: STANLEY ISLAND, DAVIE REEF & DAVIE CAY

Visit Stanley Island in the Flinders Island Group and take a walk to view the isolated Endaen Aboriginal rock art guided by a traditional owner who will offer an interpretation. The art here depicts the first sailing ships to visit Queensland shores. At Davie Reef enjoy swimming, scuba, snorkelling or glass-bottom boat tours and see Brown Boobie Bird colonies at Davie Cay.

DAY 9: LIZARD ISLAND

Enjoy the breathtaking natural beauty of Lizard Island. Join an optional hike to Cook's Look and be rewarded with exceptional views over the Great Barrier Reef. Learn about the tragic fate of Mary Watson on a walk to her cottage. Snorkel from the beach over giant clam gardens and colourful coral and visit the Lizard Island Research Station.

The Small Cruise Ship Collection
www.small-cruise-ships.com

01432 507 280 (within UK)

info@small-cruise-ships.com | small-cruise-ships.com



DAY 10: COOKTOWN

Discover historic Cooktown, with buildings dating back to the 1870s. Here you will have the choice of a guided indigenous cultural tour, or a guided Cooktown historic tour. You will also have the opportunity for time at leisure to explore Cooktown's attractions which include art galleries, the botanic gardens, James Cook Museum (with original artefacts from the HMB Endeavour), lookouts, and a walk to the top of Grassy Hill.

DAY 11: ARRIVE CAIRNS

Our incredible adventure of Australia's North comes to an end. Arrive at Cairns at 8am.

Please Note:

This itinerary is indicative. No two cruises with Coral Expeditions will be the same, with each expedition crafted by our experienced Masters and Expedition Leaders. Throughout the expedition we may make changes to the itinerary as necessary to maximise your expeditionary experience. Allowances may be made for seasonal variations, weather, tidal conditions and any other event that may affect the operation of the vessel. Coral Expeditions suggests that you do not arrive on the day of embarkation or depart on the day of disembarkation due to any changes that may occur in scheduling.



The Small Cruise Ship Collection

www.small-cruise-ships.com

small-cruise-ships.com

info@small-cruise-ships.com

YOUR SHIP: CORAL DISCOVERER

YOUR SHIP: Coral Discoverer

VESSEL TYPE:

LENGTH:

PASSENGER CAPACITY:

BUILT/REFURBISHED:

Yacht-like Coral Discoverer set a new benchmark standard of sophistication in expedition cruising when she was constructed by us in 2005. Coral Discoverer sailed on pioneering expeditions through Papua New Guinea, the islands of the South Pacific, Vanuatu, New Zealand, West Papua, and the Spice Islands. She led explorations into remote areas, focusing on destinations that were largely inaccessible to larger cruise ships. Coral Discoverer is exceptionally nimble and maneuverable, with a shallow draught to get up close to destinations, ocean views from all public spaces, an expansive open-air sun deck, all outside-facing staterooms, and state-of-the-art tools for exploration including the Xplorer, zodiacs, a glass-bottom boat, and kayaks. A full refurbishment in 2018 saw the addition of private balconies, the much-loved Xplorer sundeck bar, and all new furnishings throughout the ship. Comfortable, reliable, and intimately scaled, Coral Discoverer now conducts expeditions across Australia's coast - Tasmania, Cape York and Arnhem Land and the Kimberley. Australian flagged and staffed by an Australian and New Zealand crew, your experience aboard Coral Discoverer will be memorable. Onboard Accommodation Onboard accommodation comprises 36 spacious modern

staterooms. You can select from Bridge, Promenade or Main Deck staterooms offering a choice of twin through to junior king-size doubles. All staterooms have an ocean view, en-suite facilities, settee, large wardrobe, desk, luggage storage, individual air-conditioning control, and are serviced daily. Onboard Facilities What you would expect of a much larger cruise ship: Large sundeck Spa Pool Guest computer Comprehensive reference library Phone and fax facilities Lecture lounge with large plasma screen Limited laundry facilities Two fully stocked cocktail bars Boutique and dive shop Air-conditioned public areas Coral Discoverer is equipped with the latest technology active stabilizers and is fitted with state-of-the-art safety and navigational equipment and is the only Australian passenger ship registered with full SOLAS compliance allowing opportunities to explore a multitude of international voyages. Dining All meals during the cruise are included. Breakfast and lunch are served in the Dining Room located on the Main Deck and are buffet-style while dinner is table d'hote. Coffee and tea is available 24 hours. Standard hours are breakfast from 7:00-8:30am, lunch at 12:30pm and dinner at 7:30pm however meal times may vary according to the day's activities. Meal times will be advised in the onboard daily bulletins. Excursion Boats And Zodiacs The "Xplorer" is a specially designed aluminium excursion vessel used for the majority of our excursions. This vessel has high horsepower engines and will accommodate all passengers at one time. The "Xplorer" will be used for landings and for extensive exploration of rivers and tributaries. For your added convenience and comfort, the "Xplorer" is equipped with an awning and toilet. We



The Small Cruise Ship Collection

www.small-cruise-ships.com

small-cruise-ships.com

info@small-cruise-ships.com

also carry two inflatable landing craft (Zodiacs). Designed for expedition work, these large and heavy-duty inflatables are extremely safe. Separate air compartments retain a large reserve of buoyancy even if the boats damaged. The flat bottom design permits these crafts to land directly onto the beaches. Expect nonetheless to wade through shallow water to reach the shore. See photo



below (right)

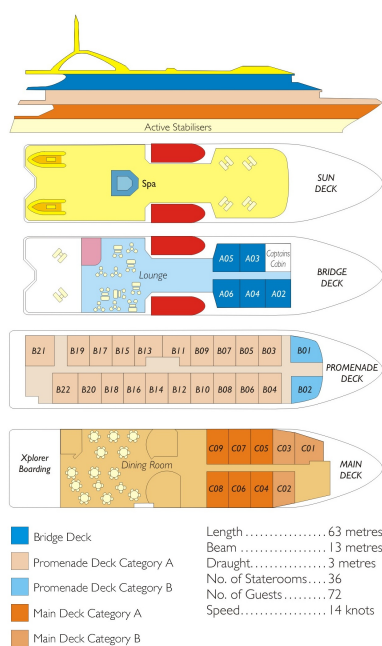
The Small Cruise Ship Collection

www.small-cruise-ships.com

small-cruise-ships.com

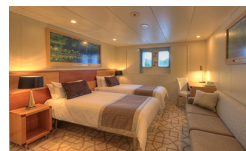
info@small-cruise-ships.com

INSIDE YOUR SHIP



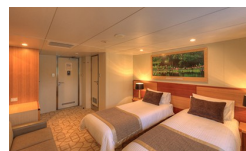
Bridge Deck Balcony

Main Deck A



Main Deck B

Promenade A





The Small Cruise Ship Collection

www.small-cruise-ships.com

small-cruise-ships.com

info@small-cruise-ships.com

PRICING

03-Nov-2025 to 13-Nov-2025

Promenade A	£7971 GBP pp
Main Deck A	£6742 GBP pp
Main Deck B	£6135 GBP pp
Bridge Deck Balcony	£8583 GBP pp



The Small Cruise Ship Collection

www.small-cruise-ships.com

01432 507 280 (within UK)

info@small-cruise-ships.com | small-cruise-ships.com