

## The Small Cruise Ship Collection

www.small-cruise-ships.com

small-cruise-ships.com

info@small-cruise-ships.com

## THROUGH THE HEART OF JAPAN

Experience the dynamic landscape of Japan, from the vibrant cities of the mainland to quiet coastal island villages. Departing Tokyo, begin your journey by experiencing traditional Japanese culture at the township of remote Shimizu and walking the cobblestone staircase leading to the sacred kamikura shrine at Shingu. Continue to the ideal vantage point of Kobe port to explore the bustling streets of Osaka for an authentic food tour or spend time at Kyoto amongst the diverse cityscape of modern architecture and ancient temples. Discover the lush mountainous landscape of Iya Valley at remote Tokujima, learn about the traditional history of the soy sauce craft in Shodojima and explore the ancient castle at little-visited Karatsu. Visit Jeju Island in South Korea to view the extraordinary UNESCO listed Manjanggul lava tubes before discovering the little-known Goto Islands and concluding your journey in Fukuoka. Be immersed in the poignant histories and ancient traditions within these diverse landscapes on this authentic journey through the heart of Japan.



### ITINERARY

#### DAY 1: DEPART TOKYO

Board the Coral Adventurer from Tokyo Bay at 4:00pm for a 7:00pm departure. Settle into your cabin and relax as we set sail towards the Sea of Japan. This evening, join the Captain's welcome drinks and meet your crew and fellow guests as the sun sets.

#### SHIMIZU

Shimizu, translating to 'pure water' in Japanese is one of Japan's most scenic ports with unparalleled views of Mt. Fuji. With a mild climate, the area is home to rich tea plantations located on the Nihondaira Plateau. Visit the famous tea plantations, explore the historic township with a bustling seafood market and museum, discover the photogenic miho-no-matsubara pine grove and take to a hiking trail to enjoy rustic ropeways.

#### SHINGU

Translating to 'new shine', Shingu is home to the sacred kamikura shrine located atop a hill. The area also hosts a

The Small Cruise  
Ship Collection  
www.small-cruise-ships.com

01432 507 280 (within UK)

info@small-cruise-ships.com | small-cruise-ships.com



## The Small Cruise Ship Collection

[www.small-cruise-ships.com](http://www.small-cruise-ships.com)

[small-cruise-ships.com](http://small-cruise-ships.com)

[info@small-cruise-ships.com](mailto:info@small-cruise-ships.com)

stunning part of the Kumano River, Dorokyo Gorge, and pilgrimage routes to the UNESCO World Heritage Site of Kii Mountain Range. Climb the 538 steps to the shine to see gotobiki iwa – the holy rock and picturesque scenery from this elevated viewpoint. Explore the city centre to connect with the food, culture and history of the area and set off on the daimonzaka trail – an impressive cobblestone staircase that leads from the valley up to the temples.

### OSAKA / KYOTO

Today, you may choose to explore Osaka or Kyoto for the day. Time permitting, we may travel by bullet train. Immersive yourself in colourful, bustling Osaka, the food capital of Japan, where ancient and modern architecture collide. Visit Osaka Castle, join a guided tour of famous Dotonburi Street, stroll through Kuromon Market and take it all in from the observation deck in Umeda Sky Building. Kyoto city, once the capital of Japan, is famous for its classical Buddhist temples, gardens, imperial palaces, Shinto shrines and traditional wooden houses. Learn of the rich history of this area as we visit these places as well as local street market, Nishiki Market, well-known for its fantastic takeaway food.

### TOKUJIMA

The Iya Valley is a remote, mountainous valley with dramatic steep-sided mountain slopes strung with suspension bridges constructed from mountain vines known as kazurabashi. These vine bridges were once the only means for moving people and goods through the challenging terrain with the Wild Monkey Bridge open to visitors who can pull themselves across the river in a wooden cart suspended on a rope. We take a sightseeing boat cruise through the Oboke Gorge, admire artworks and artefacts at the Otsuka Museum of Art, visit a Buddhist temple

and experience an Awa Dance performance, which is celebrated annually at a festival dedicated to this dance style.

### SHODOJIMA

One of the first islands born to the Gods in the creation myth of Japan, Shodojima literally means ‘small bean island’, a fitting name for an island where traditionally soybean crops were processed into soy sauce, though is better known more recently for its olive plantations. Learn about this time-honoured condiment with a 400-year-old history at the Marukin Soy Sauce Historical Museum. Experience the making of the Japanese famous Somen noodle and try your hand at dividing the noodles with long chopsticks. Visit Misaki no Bunyojyo, the elementary school featured in the famous film Twenty Four Eyes.

### MIYAJIMA

The famed Itsukujima shrine is one of Japan’s most recognisable symbols with its shinto shrine and red torii gate seemingly floating upon the Seto Inland Sea. Itsukujima Shrine is a UNESCO World Heritage Site and a National Treasure. Other important sites are Daisho-in, a temple of Shingon Buddhism and Reikado Hall, located on Mt Misen, the highest peak on Miyajima. Walking paths link Miyajima’s cultural sites and Maple Valley, providing the ideal pace with which to absorb centuries-old customs. Stroll around the island, amongst the deer that wander the same sites, and take in the beauty of the island.

### HIROSHIMA

Forever linked to the WWII tragedy that saw an atomic bomb dropped on the city in 1945, Hiroshima has since been rebuilt while retaining some historical heritage, with the Peace Memorial Park now the city’s most prominent feature. Shukkeien





## The Small Cruise Ship Collection

[www.small-cruise-ships.com](http://www.small-cruise-ships.com)

[small-cruise-ships.com](http://small-cruise-ships.com)

[info@small-cruise-ships.com](mailto:info@small-cruise-ships.com)

Garden dates as far back as the 1600's with its valleys, mountains and forests represented in miniature with tea houses amongst the gardens an ideal spot to take time to enjoy the idyllic surrounds.

### MATSUYAMA

High on Mount Katsuyama, Matsuyama Castle is one of Japan's twelve original castles and stands at the heart of the city of Matsuyama. Constructed in the early 1600's, the original tower collapsed after being struck by lightning. A three-story tower was added to the site two hundred years after. Pilgrims dressed all in white are a frequent site at Ishitji Temple, where an inner temple connects to the main temple grounds via a dimly cave and 200m long tunnel that houses Buddhist statues, carvings and drawings.

### KARATSU

This trading hub is known for its safe harbour and close proximity to other foreign trading ports. Here we will explore the island's many idyllic surrounds including the Nanatsugama limestone caves, the bustling city area and markets, climbing to historic Karatsu Castle and one of Japan's top waterfalls, Mikaeri Falls.

### TSUSHIMA

Roughly halfway between the Japanese mainland and the Korean Peninsula, Tsushima was once a single island before a canal divided the island in two in the 1600's, then into three islands in the 1900's with a second canal constructed. Though in reality there are approx. 100 islands that collectively make up Tsushima with its abundance of natural beauty and untouched forests. Birdwatching is a popular pastime, particularly within the Tsuchijima Wildlife Conservation Centre, home to the

Tsushima Leopard Cat, an endangered species. The perfect place for true explorers, take a tour of the area and visit an observation deck for breathtaking views and chances to spot some of the diverse native flora and fauna.

### JEJU (SOUTH KOREA)

Jeju Island's Manjanggul lava tubes are regarded as the finest lava tube system of caves anywhere in the world and are recognised by UNESCO as a Global Geopark site for their unique geological features and volcanic landforms. The Jeonbang Falls is Korea's only waterfall that tumbles directly into the sea, while Seongsan Ilchulbong Peak is a flat-topped crater that rose from the sea many years ago. The near-circular crater is popular for its walking trails and elevated position to view the sunrise or sunset.

### SASEBO

With a WWII history, the Maritime Self-Defence Force Sasebo Museum displays historical naval vessels alongside the Former Sasebo Navy Club which dates back to the late 1800's. At Mukyudo, an air raid shelter is unique amongst Japan's countless shelters as it was built by school children in the style of a school. The historical pottery town of Arita is where Japan's fine porcelain was first produced around 400 years ago. Arita-yaki pottery is now the most highly regarded pottery across all Japan with its 'secret ingredient' kaolin the essential mineral required to make fine porcelain. We try our hand at pottery making with an opportunity to make our very own Arita ceramics.

### AOKATA AND NAKADORI ISLANDS, GOTO ISLANDS

The Goto Islands are best known for Christianity, while religion was banned, the 'hidden Christians' settled here and continued

The Small Cruise  
Ship Collection  
[www.small-cruise-ships.com](http://www.small-cruise-ships.com)

**01432 507 280** (within UK)

[info@small-cruise-ships.com](mailto:info@small-cruise-ships.com) | [small-cruise-ships.com](http://small-cruise-ships.com)



## The Small Cruise Ship Collection

[www.small-cruise-ships.com](http://www.small-cruise-ships.com)

[small-cruise-ships.com](http://small-cruise-ships.com)

[info@small-cruise-ships.com](mailto:info@small-cruise-ships.com)

practicing their faith in secret until the ban was lifted in the 1870s. Goto Island translates into English as the 'five island chain', with Nakadori and Aokata Islands being two of the most populated. With around 50 churches dotted across the prefecture, such as the UNESCO World Heritage-listed Kashiragajima Church with its stone construction, other interesting sites we will visit include the Whale Museum and the Stone Monuments of Wakamatsu Island.

### FUKUE ISLAND

Also a member of the Goto Islands, Fukue Island is the largest of the group with hilly terrain, temples and churches. Be welcomed into port with wind instruments and a traditional drum performance. Hike Mt. Onidake, the dormant volcano, learn of the area's history on a visit to the city museum, cruise Abunze coast to view the lava rock formations and soak in the natural beauty of the island with its beaches, mountains and craggy coastline.

### DAY 15: ARRIVE FUKUOKA

Our voyage ends in the Japanese port of Fukuoka. Disembark Coral Adventurer at 8:30 am and bid farewell to new-found friends, the Master and crew. Fukuoka has great shopping, some of the best cuisine and accessibility to nature nearby,

### Please note:

This itinerary is an indication of the destinations we visit and activities on offer. Throughout the expedition we may make changes to the itinerary as necessary to maximise your expeditionary experience. Allowances may be made for seasonal variations, weather, tidal conditions, and any other event that may affect the operation of the vessel. Coral Expeditions suggests that you do not arrive on the day of embarkation or

depart on the day of disembarkation due to any changes that may occur in scheduling.

The Small Cruise  
Ship Collection

[www.small-cruise-ships.com](http://www.small-cruise-ships.com)

**01432 507 280** (within UK)

[info@small-cruise-ships.com](mailto:info@small-cruise-ships.com) | [small-cruise-ships.com](http://small-cruise-ships.com)





## The Small Cruise Ship Collection

[www.small-cruise-ships.com](http://www.small-cruise-ships.com)

[small-cruise-ships.com](http://small-cruise-ships.com)

[info@small-cruise-ships.com](mailto:info@small-cruise-ships.com)

## YOUR SHIP: CORAL ADVENTURER

**YOUR SHIP:** Coral Adventurer

**VESSEL TYPE:**

**LENGTH:**

**PASSENGER CAPACITY:**

**BUILT/REFURBISHED:**

Launched in 2018 with her maiden voyage in 2019, Coral Adventurer has been designed and built to take you closer to unspoilt vistas in comfort, style and safety. A culmination of two years of design and three decades of passion for expedition cruising. BIGGER IS NOT BETTER At a time when cruise ships get larger and glitzier, we remain stubbornly compact and intimate. Our ships are designed to take you to unspoilt destinations not accessible to large ships. We want you to have the luxury of space, dine with whom you please, or find your quiet corner on deck. So Coral Adventurer has just 60 spacious cabins. This preserves the intimate atmosphere we are known for without sacrificing the stability and comfort of a true ocean going vessel. BUILT FOR DISCOVERY The Coral Adventurer features the trademark dual 'Xplorer' tenders cradled on a hydraulic platform slung off the back of the ship, enabling our guests to go ashore in comfort and ease. The shallow draft of the ship enables us to go closer to shore than larger ships. Together with a renowned expedition team, this new ship will offer the most advanced expedition capabilities of any small ship afloat. BUILT FOR COMFORT With active stabilisers dampening sea motion, mostly balcony cabins, and interiors designed with the colours and

textures of tropical Queensland, the Coral Adventurer is a comfortable ship. She features promenade decks, generous communal areas that accommodate all guests, a passenger elevator, and an open kitchen where you can observe our chefs whip up small batch cuisine from locally sourced ingredients. BUILT FOR PERSONAL SERVICE The Coral Adventurer will continue a proud tradition of Australian flagged vessels with friendly and professional Australian crew. The onboard atmosphere remains refreshingly informal and intimate. Take your seat at our bridge lounge, chat with the captain at your leisure or accompany our chefs on a market tour. Food and wine features Single seating dining area with communal 'wine table' finished with Australian stone; serving buffet breakfast and lunch, and multi-course table d'hôte dinners Showcase galley visible to guests for fresh small-batch cuisine featuring Australian produce Multiple indoor and outdoor bars, including the Explorer bar on the sundeck for sunset drinks with 180 degree views Curated wine cellar featuring modestly priced boutique wines for daily drinking and exceptional vintage Australian reds. Guest comfort All outside guest cabins with en-suite bathrooms; majority have private balcony Active stabilisers to dampen sea motion Gym equipped with elliptical trainers and treadmills Passenger elevator Wi-Fi available in all

The Small Cruise Ship Collection  
[www.small-cruise-ships.com](http://www.small-cruise-ships.com)

01432 507 280 (within UK)

[info@small-cruise-ships.com](mailto:info@small-cruise-ships.com) | [small-cruise-ships.com](http://small-cruise-ships.com)



The Small Cruise  
Ship Collection

[www.small-cruise-ships.com](http://www.small-cruise-ships.com)



[small-cruise-ships.com](http://small-cruise-ships.com)[info@small-cruise-ships.com](mailto:info@small-cruise-ships.com)



guest areas



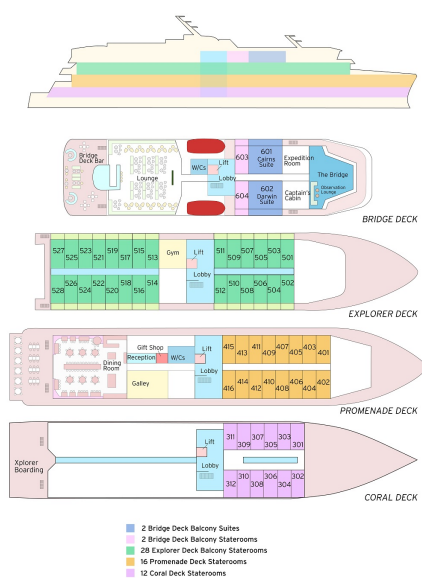
# The Small Cruise Ship Collection

www.small-cruise-ships.com

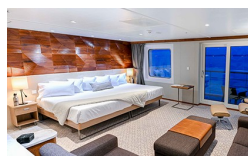
small-cruise-ships.com

info@small-cruise-ships.com

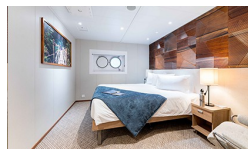
## INSIDE YOUR SHIP



Bridge Deck Balcony Suite ■

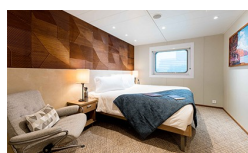
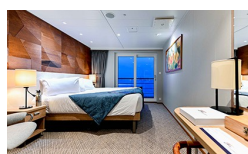


Coral Deck ■ Stateroom



Explorer Deck Balcony Stateroom

Promenade Deck Stateroom





# The Small Cruise Ship Collection

[www.small-cruise-ships.com](http://www.small-cruise-ships.com)

[small-cruise-ships.com](http://small-cruise-ships.com)

[info@small-cruise-ships.com](mailto:info@small-cruise-ships.com)

## PRICING

21-Sep-2024 to 05-Oct-2024

|                                 |               |
|---------------------------------|---------------|
| Promenade Deck Stateroom        | £9807 GBP pp  |
| Bridge Deck Balcony Suite       | £17555 GBP pp |
| Explorer Deck Balcony Stateroom | £13062 GBP pp |
| Coral Deck Stateroom            | £8174 GBP pp  |