

## The Small Cruise Ship Collection

[www.small-cruise-ships.com](http://www.small-cruise-ships.com)

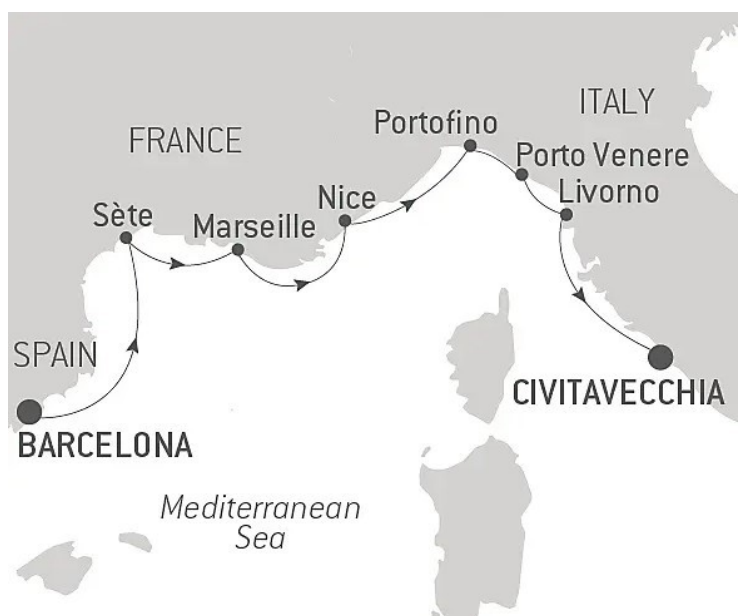
[small-cruise-ships.com](http://small-cruise-ships.com)

[info@small-cruise-ships.com](mailto:info@small-cruise-ships.com)

## SOUTHERN FRANCE AND THE ITALIAN RIVIERA BY SEA – WITH SMITHSONIAN JOURNEYS

In alliance with Smithsonian Journeys. This cruise is part of a collection of PONANT voyages that are specially-tailored for English-speaking travelers who want to engage with the world. In addition to the usual elements of the PONANT experience, the listed price for these voyages includes transfers to and from the ship, talks and discussions aboard ship by world class experts, and a shore excursion or activity in each port of call that encourages guests to embrace the sights, sounds, tastes, and smells of the local environment and culture. Join us for this voyage along both the French and Italian Rivas, exploring the rich history and culture of the fabled lands on the northern shores of the Mediterranean Sea. Setting sail from Barcelona, your discovery of southern France begins from Sète in the Occitanie with the hilltop city of Carcassonne and its medieval citadel, a UNESCO World Heritage site. The ancient port of Marseille is your gateway to either Aix-en-Provence, "city of a thousand fountains" and home to Paul Cezanne, or to Van Gogh's Arles and the UNESCO World Heritage "City of Popes," Avignon. Nice, the last French port on this leg of your voyage, offers a tour of nearby Monte Carlo and a trip to the medieval hilltop village of Eze, with panoramic views of the Cote d'Azur. Or enjoy a journey to St. Paul de Vence to visit the Maeght Foundation's collection of modern and contemporary art and sculpture. The small Italian fishing village of Portofino, now a favored haunt of the rich and famous, welcomes you for a relaxing afternoon and evening of leisurely browsing through its shops and galleries and perhaps a chance to sample the local cuisine. Porto Venere can serve as your gateway to discovery of the UNESCO World Heritage Cinque Terre, the villages at the

heart of the Italian Riviera. Or you may spend the day exploring Romanesque Lucca, birthplace of Giacomo Puccini, and medieval Pisa, with its magnificent Duomo, Baptistry, and Leaning Tower. From Livorno, a full day excursion to Florence introduces you to the heart of the Italian Renaissance. Or if you prefer, you may explore the Etruscan ruins and museum at nearby Volterra. Your voyage ends in the Roman port of Civitavecchia, with easy



access to Rome.

### ITINERARY

Day 1 BARCELONA

The Small Cruise Ship Collection  
[www.small-cruise-ships.com](http://www.small-cruise-ships.com)

01432 507 280 (within UK)

[info@small-cruise-ships.com](mailto:info@small-cruise-ships.com) | [small-cruise-ships.com](http://small-cruise-ships.com)



## The Small Cruise Ship Collection

[www.small-cruise-ships.com](http://www.small-cruise-ships.com)

[small-cruise-ships.com](http://small-cruise-ships.com)

[info@small-cruise-ships.com](mailto:info@small-cruise-ships.com)

### Day 3 MARSEILLE

Located on the seashore between the mountains of Montjuic and Tibidabo, Barcelona offers its many visitors a perfect blend of tradition and modernism. Truly an open-air museum, the "prodigious town" reveals an astonishing range of artistic treasures and museums, combining Roman ruins, medieval districts and a number of avant-garde elements from the 20th Century. Over the years, it has been marked by some of the greatest artists, such as Picasso, Miro or Gaudi, most of whose work has been listed as World Heritage Sites by UNESCO. Take the time to stroll along the Ramblas and enjoy the gentle, typically Mediterranean lifestyle of the capital of Catalonia.

### Day 2 SÈTE

The port of Sete, referred to by locals as the "Venice of Languedoc" because of its many canals, is a resort town known for its beaches and a thriving center of art. It's also the gateway to nearby treasures of the Occitanie, including Nimes, home to an exquisitely preserved Roman Amphitheater and the beautiful 18th-century Jardins de la Fontaine. The cities of Narbonne and Carcassonne are also within easy reach and serve as an introduction to the history and culture of this region. In Narbonne, you will want to visit the Palais des Archeveques and its Archaeological Museum, and in Carcassonne, you will be awed by the medieval citadel, a UNESCO World Heritage site.

The oldest harbour in France, Marseille is the city where PONANT has chosen to set up its company headquarters. Heart vibrating in its setting of Mediterranean Calanques, it reveals its raw and authentic beauty, made up of a thousand influences and cultures which, over the centuries, have made up its wealth. A stroll through the Old Port will allow you to discover the places corresponding to the city founded by the Greeks as well as Notre-Dame-de-la-Garde Basilica, with its astonishing neo-Byzantine architecture, which overlooks it. Close to the quays, the Place de Lenche, which covers the ancient agora, will be perfect for a break in one of its lively cafes before melting into the maze of narrow streets with colourful houses in the Panier district, just a stone's throw away.

### Day 4 NICE

Capital of the Cote d'Azur, Nice is surrounded by an amphitheatre of hills and mountains that protects it from the wind. You will probably want to explore the Promenade des Anglais, where you can sit on one of the famous blue chairs laid out opposite the baie des Anges. The Chateau hill is also a very pleasant place to walk. This is the entrance to the old city, with its bustling markets and regional products along the main street, the Cours Saleya.

The Small Cruise  
Ship Collection  
[www.small-cruise-ships.com](http://www.small-cruise-ships.com)

**01432 507 280** (within UK)

[info@small-cruise-ships.com](mailto:info@small-cruise-ships.com) | [small-cruise-ships.com](http://small-cruise-ships.com)





## The Small Cruise Ship Collection

[www.small-cruise-ships.com](http://www.small-cruise-ships.com)

[small-cruise-ships.com](http://small-cruise-ships.com)

[info@small-cruise-ships.com](mailto:info@small-cruise-ships.com)

### Day 5 PORTOFINO

Close to the Cinque Terre, Portofino is the jewel of the Ligurian Riviera. This "small village that stretches like a half moon around a silent basin", described by Guy de Maupassant, is today a pretty, lively little port that has managed to preserve the authenticity of its maritime traditions, which have been recognised since Ancient times. Built in the hollow of a small natural cove sheltered by the pine forest, the village is at the heart of a protected maritime reserve. The shimmering colours of its house fronts and the exceptional location of this village have inspired many authors and artists. You will also see the Portofino lighthouse, immaculate in its green setting. Perched on the Punta del Capo, it watches over the peninsula and its postcard setting.

### Day 6 PORTO VENERE

Located on the magnificent chiselled coast of Liguria, to the north-west of the Italian peninsula, Portovenere is an unusual little fishing village. Clinging to the southernmost tip of the Cinque Terre National park, this charming town benefits from an exceptional location, at the mouth of the gulf of La Spezia. As soon as you set foot on land, you will be mesmerised by the pastel shades of the buildings. Via Capellini is its lively and welcoming main street, brimming with shops and restaurants. At the end of a long promenade, a steep road leads to Doria

castle. Below, on its rocky spur, the Church of Saint Peter offers a splendid view of Palmaria island.

### Day 7 LIVORNO

On the ligurian coast, Livorno invites us to Tuscany, a charming region offering archaeological vestiges, Renaissance treasures, undulating landscapes and a pleasant way of life. When the Medicis arrived in the 16th century they developed the city, which became one of the most important ports in the Mediterranean. Cosmopolitan and multireligious, Livorno has welcomed many immigrants and is a wonderful example of cultural diversity. Built during that period, Fortezza Vecchia and Fortezza Nuova attest to the city's power. At the foot of the new fort, Nuova Venezia is an enchanting district with small canals and streets to stroll along to discover a few architectural treasures, such as the magnificent Santa Caterina da Siena church in the Tuscan baroque style.

### Day 8 CIVITAVECCHIA (ROME)

Built on an Etruscan site, between the Tyrrhenian sea and the Monti della Tolfa, Civitavecchia respires the dolce vita. This very modern and easy going town combines art and history with panache. You can also visit superb historical sites like Fort Michelangelo or the Cathedral of Saint Francis of Assisi. Just 80 kilometres from Rome, the town is a beautiful first step to the

The Small Cruise  
Ship Collection  
[www.small-cruise-ships.com](http://www.small-cruise-ships.com)

**01432 507 280** (within UK)

[info@small-cruise-ships.com](mailto:info@small-cruise-ships.com) | [small-cruise-ships.com](http://small-cruise-ships.com)



Italian capital.

Please note:

Itineraries are subject to change.





## The Small Cruise Ship Collection

[www.small-cruise-ships.com](http://www.small-cruise-ships.com)

[small-cruise-ships.com](http://small-cruise-ships.com)

[info@small-cruise-ships.com](mailto:info@small-cruise-ships.com)

## YOUR SHIP: LE BOUGAINVILLE

**YOUR SHIP:**

**Le Bougainville**

**VESSEL TYPE:**

**LENGTH:**

**PASSENGER CAPACITY:**

**BUILT/REFURBISHED:**

Featuring innovative and environmentally-friendly equipment, elegantly designed cabins, spacious suites with large windows, and lounge areas that open onto the outside, this new limited-capacity yacht boasting just 92 cabins and suites will offer you a truly unique cruising experience. As the first ship in a new series that remains true to the Ponant spirit, Le Bougainville will embody the unique atmosphere that is the cruise line's hallmark: a subtle blend of refinement, intimacy and comfort. Aboard this ship that flies the French flag, you will experience the incomparable pleasure of an intimate cruise, with the possibility of exploring an ever-increasing range of destinations in an ethnic-chic ambiance with luxury service. Experience a luxurious setting where the accent is on authenticity and passion for travel. **RESTAURANTS** As it is an essential part of French culture, gastronomy will naturally have pride of place aboard this new ship. Through its two restaurants, Le Bougainville will invite you on a journey to elegance and epicureanism. In a relaxed atmosphere, a first dining area located on Deck 3 and able to seat 70 will serve grilled meats daily, along with a variety of salads and desserts. To the back of Deck 4, you will find a 260 m<sup>2</sup> panoramic restaurant which can accommodate all of

our passengers in a single sitting. Designed differently to that on our other ships, this dining area, which opens onto the outside, will have a buffet of salads, desserts and cheeses at your disposal. Our discreet and attentive crew will provide table service for hot meals. **PUBLIC AREAS** Like Le Boreal and its sisterships, Le Bougainville has many common areas that are designed and equipped to meet all of your needs while preserving the intimacy of each passenger. A 140 m<sup>2</sup> reception area includes: A reception/concierge desk, An excursions desk, The ship's administrative services, The sales office, manned by our Guest Relations Officer, Our 50 m<sup>2</sup> boutique which sells clothing, jewellery, beauty products, postcards and various accessories, Toilets accessible to passengers with reduced mobility. A new hydraulic platform with adjustable height provides: Easier boarding than on any other cruise ship, Easier Zodiac embarkation and disembarkation for expeditions, Easier access to the sea for swimming and practising various water sports such as kayaking or paddle-boarding. A pool deck offering: A pool with a panoramic view, equipped with a counter-current swimming system, A pleasant solarium, An outdoor bar and lounge with armchairs and sofas. A 200 m<sup>2</sup> main lounge which can accommodate all of our passengers to share convivial moments and to host activities organised during the day or evening. Lastly, a theatre that seats 188, equipped with: The latest sound and lighting technology, A LED wall as the stage backdrop, for the projection of high-resolution images and videos. Please click the following links to read more about Ponant and the other Ponant

The Small Cruise  
Ship Collection  
[www.small-cruise-ships.com](http://www.small-cruise-ships.com)

**01432 507 280** (within UK)

[info@small-cruise-ships.com](mailto:info@small-cruise-ships.com) | [small-cruise-ships.com](http://small-cruise-ships.com)



## The Small Cruise Ship Collection

[www.small-cruise-ships.com](http://www.small-cruise-ships.com)



[small-cruise-ships.com](http://small-cruise-ships.com)

[info@small-cruise-ships.com](mailto:info@small-cruise-ships.com)



cruise ships.



The Small Cruise  
Ship Collection

[www.small-cruise-ships.com](http://www.small-cruise-ships.com)

**01432 507 280** (within UK)

[info@small-cruise-ships.com](mailto:info@small-cruise-ships.com) | [small-cruise-ships.com](http://small-cruise-ships.com)



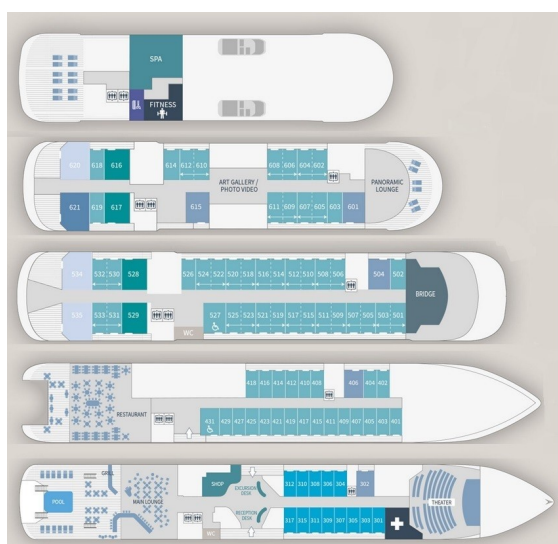
# The Small Cruise Ship Collection

www.small-cruise-ships.com

small-cruise-ships.com

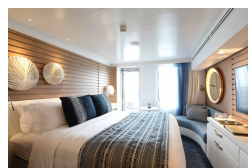
info@small-cruise-ships.com

## INSIDE YOUR SHIP

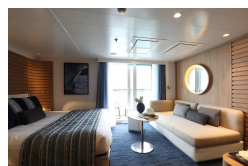


- Owner's Suite Deck 6
- Privilege Suites Deck 5-6
- Grand Deluxe Suites Deck 5-6
- Prestige Suites Deck 5-6
- Deluxe Suites Deck 5-6
- Prestige Cabins Deck 4-5-6
- Deluxe Cabins Deck 3

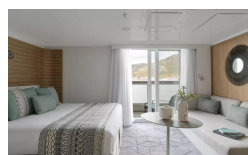
### Deluxe Stateroom



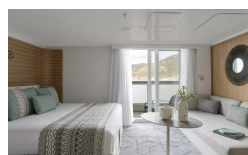
### Deluxe Suite



### Deluxe Suite Deck 3



### Deluxe Suite Deck 4



### Deluxe Suite Deck 5

### Deluxe Suite Deck 6

### Grand Deluxe Suite

### Grand Deluxe Suite Deck 5

### Grand Deluxe Suite Deck 6

### Owner's Suite

### Prestige Deck 4

### Prestige Deck 5

### Prestige Deck 5 Suite

### Prestige Deck 6

### Prestige Deck 6 Suite

### Prestige Stateroom Deck 4

### Prestige Stateroom Deck 5

### Prestige Stateroom Deck 6

### Prestige Suite Deck 5

### Prestige Suite Deck 6



## The Small Cruise Ship Collection

[www.small-cruise-ships.com](http://www.small-cruise-ships.com)



[small-cruise-ships.com](http://small-cruise-ships.com)

[info@small-cruise-ships.com](mailto:info@small-cruise-ships.com)

Privilege Suite

Privilege Suite Deck 5



The Small Cruise  
Ship Collection

[www.small-cruise-ships.com](http://www.small-cruise-ships.com)

**01432 507 280** (within UK)

[info@small-cruise-ships.com](mailto:info@small-cruise-ships.com) | [small-cruise-ships.com](http://small-cruise-ships.com)





# The Small Cruise Ship Collection

[www.small-cruise-ships.com](http://www.small-cruise-ships.com)

[small-cruise-ships.com](http://small-cruise-ships.com)

[info@small-cruise-ships.com](mailto:info@small-cruise-ships.com)

## PRICING

### 02-Oct-2025 to 09-Oct-2025

Privilege Suite	£12745 GBP pp
Prestige Suite Deck 6	£12145 GBP pp
Prestige Stateroom Deck 5	£5895 GBP pp
Grand Deluxe Suite	£13979 GBP pp
Prestige Stateroom Deck 6	£6219 GBP pp
Prestige Stateroom Deck 4	£5625 GBP pp
Deluxe Suite	£8585 GBP pp
Deluxe Stateroom	£5085 GBP pp
Owner's Suite	£16269 GBP pp
Prestige Suite Deck 5	£11559 GBP pp

### 23-Sep-2026 to 01-Oct-2026

Prestige Deck 5 Suite	£12425 GBP pp
Deluxe Suite Deck 3	£9369 GBP pp
Prestige Deck 6	£6929 GBP pp
Privilege Suite Deck 5	£13649 GBP pp
Deluxe Suite Deck 6	£9369 GBP pp
Deluxe Stateroom	£5759 GBP pp
Privilege Suite Deck 6	£13649 GBP pp
Deluxe Suite Deck 4	£9369 GBP pp
Deluxe Suite Deck 5	£9369 GBP pp
Grand Deluxe Suite Deck 6	£14919 GBP pp
Prestige Deck 6 Suite	£13039 GBP pp
Grand Deluxe Suite Deck 5	£14919 GBP pp
Prestige Deck 4	£6315 GBP pp
Prestige Deck 5	£6595 GBP pp

### ADDITIONAL CHARGES:

Port Taxes 520 AUD pp