



SEYCHELLES, ALDABRA, ZANZIBAR WITH LAMU

Explore palm-fringed beaches with white sands and discover the unique wildlife of the Seychelles from the luxury of our five-star expedition ship on our 11-night Seychelles & East Africa Discovery cruise. You'll explore a handful of the remote 115 islands that make up this Indian Ocean archipelago, before heading to Tanzania and Kenya, known for their rich cultures and pungent spices, and ending our cruise in Mombasa. Diving, snorkelling and even surfing in these waters filled with colourful fish is pure joy. Head on land and you'll encounter nesting turtles, giant tortoises, pink flamingos and red fodies who make these lush shores home. Board our boutique ship and join us as we uncover a slice of tropical paradise far from the crowds.



ITINERARY

DAY 1 PORT VICTORIA, MAHE ISLAND

Backed by lush mountains, Victoria is the Seychelles' compact capital city, home to charming Creole houses and two elegant cathedrals. Stalls at the bustling Sir Selwyn Selwyn-Clarke Market are piled high with spices, seafood and tropical fruit, while the Botanical Gardens are famed for slender coco de mer palms and ambling giant tortoises. You can learn about the islands' colonial past and rich cultural traditions such as fishing and cooking at the National Museum of History.

DAY 2 POIVRE ISLAND

Ringed by white sand and topped with thick vegetation, Poivre Island is known for its astonishing array of marine life and birds.



Part of a remote atoll 268 km southwest of Mahe, it's a nesting ground for multiple species, including wading whimbrels and darting red fodies. Watch for hawksbill and green turtles who glide beneath the water and bury their eggs on the island's beaches. This tropical islet was named after Pierre Poivre, who first brought spices to the Seychelles.

DAY 3 BIJOUTIER ISLAND

Tiny Bijoutier Island is popular for beach picnics, snorkelling and wildlife-spotting. You can stroll around the palm-fringed shore of this remote Outer Islands gem in mere minutes, keeping an eye out for spotted tiger cowrie shells and scuttling giant crabs on the white sand. Accessible only at high tide, the circular islet is surrounded by clear, shallow waters and is a sanctuary for soaring frigatebirds and wedge-tailed shearwaters. It's also a nesting site for turtles.

DAY 4 AT SEA

You can spend your day at sea enjoying the many facilities available. Head to the sauna, get in a workout in the state-of-the-art gym or relax in the jacuzzi whilst taking in incredible views along the way. If you prefer to learn a little more about your surroundings, listen to an informative talk or have a chat with one of our knowledgeable on-board experts.

DAY 5 - 6 ALDABRA ISLANDS

Comprising 13 islands around a lagoon, this massive raised

coral atoll is home to the world's largest tortoise colony. More than 100,000 lumbering giant tortoises inch their way around the isolated archipelago's protected landscape, which features hundreds of flowering plant and fern species. You might be lucky enough to spot swooping Aldabra drongos - endemic to the islands - or wading pink flamingos. Look out too for scavenging white-throated rails, the only flightless bird remaining in the Indian Ocean.

DAY 7 ASSUMPTION ISLAND

A tranquil white-sand beach stretches for miles alongside brilliantly turquoise water on the west coast of Assumption Island. Part of the Aldabra Group, the kidney-shaped island lies more than 1,000 km southwest of Mahe and is known for its colourful butterfly species, including the belenois aldabrensis. You may bump into sauntering giant tortoises or catch a flash of green as an Assumption day gecko scampers past. Keep an eye out for evidence of nesting sea turtles near the shoreline.

DAY 8 AT SEA

You can spend your day at sea enjoying the many facilities available. Head to the sauna, get in a workout in the state-of-the-art gym or relax in the jacuzzi whilst taking in incredible views along the way. If you prefer to learn a little more about your surroundings, listen to an informative talk or have a chat with one of our knowledgeable on-board experts.

DAY 9 ZANZIBAR



Cosmopolitan Zanzibar Island (Unguja) has a captivating mix of heritage architecture and spectacular beaches. Zanzibar City's walkable old quarter, Stone Town (Mji Mkongwe), is a lively warren of narrow winding streets dotted with 18th- and 19th-century buildings. Highlights here include the Old Fort, which hosts performances in its outdoor amphitheatre, and the House of Wonders, an 1883 ceremonial palace with a grand clock tower. You'll also come across stalls heaped with locally grown spices like nutmeg and cinnamon.

DAY 10 PEMBA ISLAND

Cloaked in lush vegetation, hilly Pemba Island is famed for its extensive clove farms, peaceful islets and white-sand beaches. The island's biodiverse forests are a haven for grazing blue duiker (small antelope), and the Pemba flying fox, identifiable by its distinctive rusty-red fur and enormous wingspan stretching over 5 feet. Offshore, you can snorkel or dive in warm water among vibrantly coloured coral teeming with marine life including green turtles, whitetip reef sharks and nudibranchs.

DAY 11 LAMU

A storied Swahili settlement and former major trading hub dating back 700 years, Lamu is a delightful seafront town on the island of the same name. Clusters of ornate, well-preserved buildings built from coral stone and mangrove timber fill its maze of narrow streets. As you stroll the tiny alleyways, you can admire intricately carved wooden doors and arcaded facades, or

take a peek into hidden courtyards. The fort and museum are fantastic places to learn about Swahili culture.

DAY 12 MOMBASA

A dynamic coastal metropolis, Mombasa draws you in with its rich history and beguiling blend of cultures. For centuries, Arabs, Portuguese, Asians and British settlers have lived side by side in the enchanting old town, whose buildings meld African, European and African styles. Perched above the sea, Fort Jesus was built by the Portuguese in the 1590s to protect the city, while the bustling spice market is packed with fragrant stalls selling pepper, ginger and cardamom.

Please Note:

Itineraries are subject to change.

The Small Cruise Ship Collection

www.small-cruise-ships.com

small-cruise-ships.com

info@small-cruise-ships.com

YOUR SHIP: DIANA

YOUR SHIP: Diana

VESSEL TYPE:

LENGTH:

PASSENGER CAPACITY:

BUILT/REFURBISHED:

Launched in 2023, SH Diana provides elegant and spacious 5-star accommodation for 192 guests in 96 spacious staterooms and suites, the vast majority with large balconies. Operated by an onboard team of 140 she provides a high level of personal service, exploring the Mediterranean and its famous sites of antiquity. Now sit back, relax and take a moment to get to know this amazing new ship, purpose-designed for our unique cultural expedition cruises. Named after the Ancient Roman goddess of light, the moon, hunting and the wilderness, SH Diana been specially designed for worldwide cruising to explore the most inspiring and inaccessible places on earth. Building on the outstanding amenities of her sister ships, she adds a dedicated Multifunctional Room next to the Observation Lounge, a Private Dining Room for special occasions, and two tenders which bring guests a comfortable alternative to Zodiacs for expedition landings. A Polar Class 6 ice-strengthened hull combines with extra-large stabilisers to make your journey as comfortable as possible. SH Diana has been designed for immersive experiences, with extensive outside deck areas, multiple observation points and bright, open and relaxing public spaces with unobstructed views. The pleasure and safety of our

guests is paramount at all times, cared for by our attentive crew and seasoned expedition leaders. Cutting edge hygiene technology protects the health of all on board to the highest standards and includes air conditioning with UV sanitisation systems. SH Diana's 96 staterooms, including 11 suites, are each a superbly comfortable home from home and all feature panoramic sea views, a flame-effect fireplace, original works of art, plush couches, premium pocket sprung mattresses, en-suite bathrooms with glass-enclosed rain showers, and Egyptian cotton towels, bathrobes and sheets. A pillow menu offers customised head and neck comfort during rest, while a large flat screen TV, espresso machine with Illy premium coffee, tea making facilities with the finest Kusmi teas, and a minibar with refreshments enhance relaxation at any time. In-room dining is of course available at



all hours.

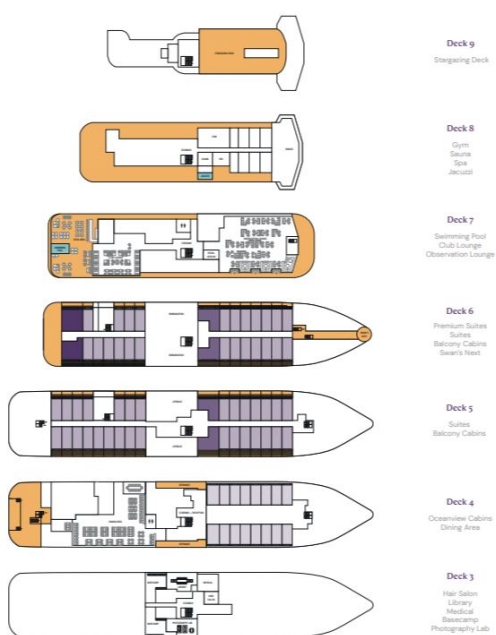
The Small Cruise Ship Collection

www.small-cruise-ships.com

small-cruise-ships.com

info@small-cruise-ships.com

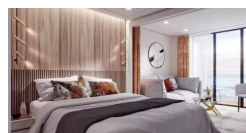
INSIDE YOUR SHIP



Balcony D5



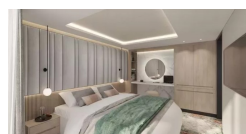
Balcony D6



Balcony M5



Junior Suite



Oceanview D4



Oceanview M4



Premium Suite

Suite



The Small Cruise
Ship Collection

www.small-cruise-ships.com

small-cruise-ships.com

info@small-cruise-ships.com

PRICING

14-Oct-2024 to 26-Oct-2024

Suite	£23355 GBP pp
Premium Suite	£27189 GBP pp
Balcony D6	£17779 GBP pp
Junior Suite	£20089 GBP pp
Oceanview M4	£12669 GBP pp
Oceanview D4	£12115 GBP pp
Balcony D5	£15435 GBP pp
Balcony M5	£16165 GBP pp

18-Oct-2025 to 29-Oct-2025

Premium Suite	£9195 GBP pp
Balcony D6	£6285 GBP pp
Junior Suite	£7999 GBP pp
Balcony M5	£5975 GBP pp
Balcony D5	£5715 GBP pp
Oceanview M4	£4619 GBP pp
Oceanview D4	£4359 GBP pp
Suite	£8365 GBP pp



The Small Cruise
Ship Collection

www.small-cruise-ships.com

01432 507 280 (within UK)

info@small-cruise-ships.com | small-cruise-ships.com