



SERENE GREENLAND - EXPLORING THE LARGEST FJORD SYSTEM ON EARTH

Greenland's remote east coast The vast, untouched wilderness of Greenland's rarely-visited east coast is accessible by ship for only a few months of the year. Our destination is Scoresby Sund, an immense system of fjords and glaciers that fans out over 24,000 square miles where you'll soak up the beauty, silence and natural wonder of this truly unique destination. Nature, wildlife and resilient culture As we sail, watch for seals on the ice floes, whales in the water, and birds such as Snowy Owls and Greenlandic Gyrfalcons in the air. You'll learn about the fascinating history, traditions, and culture of the people of Ittoqqortoormiit, one of the most remote settlements on the planet.



ITINERARY

DAY 1 Cosmopolitan Reykjavik

Explore the world's northernmost capital

Your adventure begins in Reykjavik.

A laid-back city of art, culture and history, delightful Reykjavik is well worth spending some time getting to know.



why not join one of our onboard Citizen Science projects, a fun and engaging way to contribute to global research.

[DAY 3-8 Scoresby Sund fjord system](#)

Explore the largest fjord system on Earth

You'll spend the next days exploring the vast wilderness of Scoresby Sund, the world's largest fjord system.

Cruising peacefully against a backdrop of looming mountains, blue icebergs and mirror-like waters, you'll seek out wildlife such as whales and Greenlandic Gyrfalcons. Making the most of the conditions, we'll pack in as many shore landings, nature walks, kayaking tours and wildlife sightings as possible.

You'll visit Ittoqqortoormiit, the most remote inhabited community in the Western Hemisphere. And if conditions allow, we'll sail towards the ever-changing sea ice edge to scout for wildlife.

If you want to do your bit, you can participate in Citizen Science projects that help scientists understand how this region is changing.

[DAY 9 Denmark Strait](#)

Take a stroll along Laugavegur with its boutiques and outdoor shops, gaze in awe at the striking Hallgrímskirkja

Church, and drop in on the fascinating Reykjavik Art Museum.

If you have the time, we recommend booking a Pre-Programme with us and discovering some of Iceland's natural highlights before your cruise begins.

[DAY 2 At Sea](#)

Crossing the Denmark Strait

As we sail into the Greenland Sea on our way to the world's largest island, it's time to relax, find your sea legs and get acquainted with the onboard facilities.

The Expedition Team will give a number of talks about your upcoming adventure and will explain the protocols of respectfully visiting wildlife habitats and Indigenous Arctic communities. In the Science Center, you'll find out what to expect in the epic fjords of Scoresby Sund.

If you're feeling active, head to the gym and do a workout with a view. On the other hand, you could sample the sauna, laze in a hot tub, indulge yourself at the onboard eateries or just find a quiet corner to read a book with a hot drink. Love science? Then



Heading back to Iceland

After exploring the remote beauty of Greenland, we set our course back for Iceland. Spend the time at sea recapping your experiences with new friends, studying nature in the Science Center, listening to a lecture or two, or just relaxing on deck. Look out for the seabirds that follow our ship and keep an eye out for whales.

As you reflect on your cruise, from witnessing the delicate ecology of the fjord systems to the ethereal elegance of the floating ice, east Greenland's beauty is sure to have left its mark on you.

DAY 10 Reykjavík

End of the expedition

Your Greenland expedition cruise has come full circle as we arrive back in Iceland's laid-back capital. Alas, it's time to say goodbye to the crew, the Expedition Team and your fellow guests - some of whom will no doubt be new friends.

If you're not yet ready to end your adventure, you can join our optional Post-Programme before you head home. Or why not simply extend your stay and enjoy Reykjavik and its surrounding geothermal attractions.

Please Note:

Itineraries are subject to change.



YOUR SHIP: SPITSBERGEN

YOUR SHIP:	Spitsbergen
	Expedition Passenger Capacity:
	335 Built / refurbished: 2009 /
VESSEL TYPE:	2016
LENGTH:	
PASSENGER CAPACITY:	
BUILT/REFURBISHED:	

Completely rebuilt in 2016, the 100 metre MS Spitsbergen features high technical standards as well as comfortable, modern public areas and cabins. The vessel's fresh Scandinavian design reflects a colour palette derived from the sea. She is modern and environmentally progressive, and further improvements that will reduce emissions and fuel consumption even more are in process. The new ship's maneuverability and optimal size make her quite suitable for exploring polar waters of both the Arctic and Antarctica. Spitsbergen has a wide range of facilities including a sauna, fitness centre and hot tub, several bars and restaurants and a panoramic lounge. MS Spitsbergen has an on-board Expedition Team and serves as a university at sea. Interesting lectures inside the ship as well as out on the sun deck make this an exciting and educational journey. Topics depend on the season and the waters we sail in. The Expedition Team host a lecture programme and evening gatherings daily. Out on deck you can participate in live points of interest to learn more about the nature, culture and other phenomena we encounter along the coast. In addition, the Expedition Team will

introduce you to the uniquely Norwegian notion of 'friluftsliv' (outdoor life), and encourage you take part in 'friluftsliv' hikes and activities during the journey. Ship Facilities Compass Service Centre Brygga bistro Shop Torget main dining Wi-Fi Lift Guest launderette Panoramic deck 8 Outside bar for events,



decks 7 & 8



The Small Cruise
Ship Collection

www.small-cruise-ships.com

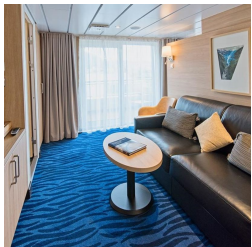
small-cruise-ships.com

info@small-cruise-ships.com

INSIDE YOUR SHIP

Arctic Superior. From

Expedition Suite. From



Polar Inside. From

Polar Outside. From



The Small Cruise
Ship Collection

www.small-cruise-ships.com

01432 507 280 (within UK)

info@small-cruise-ships.com | small-cruise-ships.com



The Small Cruise
Ship Collection

www.small-cruise-ships.com

small-cruise-ships.com

info@small-cruise-ships.com

PRICING

11-Aug-2025 to 20-Aug-2025

Polar Inside. From	£4340 GBP pp
Arctic Superior. From	£5642 GBP pp
Expedition Suite. From	£7378 GBP pp
Polar Outside. From	£5078 GBP pp

01-Sep-2025 to 10-Sep-2025

Polar Inside. From	£4181 GBP pp
Arctic Superior. From	£5436 GBP pp
Polar Outside. From	£4892 GBP pp
Expedition Suite. From	£7109 GBP pp

31-Aug-2026 to 09-Sep-2026

Arctic Superior. From	£6785 GBP pp
Expedition Suite. From	£8875 GBP pp
Polar Outside. From	£6105 GBP pp
Polar Inside. From	£5219 GBP pp



The Small Cruise
Ship Collection

www.small-cruise-ships.com

01432 507 280 (within UK)

info@small-cruise-ships.com | small-cruise-ships.com