



The Small Cruise
Ship Collection

www.small-cruise-ships.com



small-cruise-ships.com

info@small-cruise-ships.com

THE SCOTTISH ISLES — WHISKY & WILDLIFE FROM THE HEBRIDES TO THE SHETLANDS (SPITSBERGEN)

Focusing on the aspects the Scottish isles are famous for – varied wildlife and superb distinctive whiskies, this cruise takes full advantage of the outer isles in May. We delve first into the ‘whisky isle’ of Islay with its eight working distilleries creating unique, peaty drams that evokes the island’s terrain. In the Victorian port of Oban, the distillery produces a very different style of whisky, whilst on the Isle of Mull, in the pretty tiny fishing port of Tobermory, the distillery dates from the 18th century. Those not interested in whisky will still be spoilt for choice in terms of wildlife, from the archipelago of the Treshnish Isles to lonely and remote St Kilda. In May, both destinations will have teeming colonies of nesting seabirds such as puffins, kittiwakes and gannets. Whether from the ship’s decks, explorer boat cruising, or on foot, we may also get to see otters, seals, sea eagles, and golden eagles. We may even hear a corncrake amongst the spring orchids in the fields of the Small Isles. Other highlights include a private hosted visit to one of Scotland’s most ancient and scenic castles. As guests of clan chieftain Sir Lachlan MacLean, we will enjoy a private evening visit at his clan home that has a history running back 800 years. We will see where Christianity arrived in Scotland from Ireland, and how Harris Tweed is created in the Outer Hebrides.



The Small Cruise
Ship Collection

www.small-cruise-ships.com

01432 507 280 (within UK)

info@small-cruise-ships.com | small-cruise-ships.com

The Small Cruise Ship Collection

www.small-cruise-ships.com

small-cruise-ships.com

info@small-cruise-ships.com

A city of industry and elegance, Belfast is the birthplace of the Titanic, as well as being the capital and largest city of Northern Ireland. It is a gateway to a glorious countryside of pretty villages and a beautiful rugged coast with pristine beaches and breathtaking clifftop walks. Experience Giants Causeway, hike through spectacular scenery or explore what this impressive city has to offer.

Day 3 From Royalty to Races

A seaside town, the pretty port of Peel was the 14th century capital of the island and seat to the King of Mann. Winding lanes of merchants' houses, bear witness to the 19th century fishing schooners built here which traded from Ireland to Shetland. Peel Castle, connected by causeway and reputedly built by Magnus Barelegs, King of Norway, dates from the 11th century. Museums in town display vintage bikes and cars; a connection to the more modern high-speed racing that occurs on the island.

Day 4 Land of Scottish Whisky

Once the seat of the MacDonalds, Lords of the Isles, this is 'whisky island', world renowned for its peaty single-malt whiskies and many distilleries. As a stop-off for wintering geese and migrating birds, there is good bird spotting. In the charming little town of Bowmore, there are a handful of small shops, an interesting round church, plus superb cliff-top walks and a well-known golf course.

Day 5 Meeting a Clan Chief in His Castle

Known as the 'Gateway to the Isles', the little town of Oban reached its heyday when the railway arrived, adding to its life as a busy fishing port. Now a popular holiday spot, the Victorian buildings cluster round the port, ferries come and go, heading



ITINERARY

Day 1 'Dear Green Place'

Our voyage starts in Glasgow. Meaning 'Dear Green Place' in Gaelic, Glasgow boasts over 90 parks and gardens. Famous for its Victorian as well as art nouveau architecture, it is home to such institutions as the Scottish Ballet, Opera and National Theatre. This is definitely a city you'll want to explore more before you board MS Spitsbergen.

Day 2 Charming Industrial Capital

The Small Cruise Ship Collection
www.small-cruise-ships.com

01432 507 280 (within UK)

info@small-cruise-ships.com | small-cruise-ships.com



The Small Cruise Ship Collection

www.small-cruise-ships.com

small-cruise-ships.com

info@small-cruise-ships.com

out to the distant Hebrides. Many cafés have seafood-focused menus, and the distillery provides tours to sample a local dram of whisky. This evening we visit the Isle of Mull where we are fortunate to have a private guided visit to the dramatic 800-year-old Duart Castle, one of very few castles remaining in the ownership of the family. We will be hosted by Sir Lachlan MacLean, the Clan Chief himself. The Castle houses much MacLean memorabilia and our visit will include the kitchen, Sea Room and Edwardian bedrooms as well as a private reception in the Banqueting Hall. The Castle is very much the type of building you would expect a Highland Chief to live in; it is simply furnished, austere and has an air of no-nonsense solidity and age.

Day 6 Pilgrims and Puffins

World famous for its religious connections, Iona was settled in 563AD by the Irish missionary, St Columba. The much-restored Abbey remains a place of pilgrimage and peace. Wide views from the beach, known as 'The Bay at the Back of the Ocean' stretch west towards the Outer Hebrides. We will explore the Treshnish Isles, a group of distinctive volcanic islands which are home to a wealth of wildlife, from nesting puffins to colonies of kittiwakes, razorbills, guillemots and Atlantic grey seals. Fingal's Cave, immortalised by Mendelssohn's glorious 'Hebrides Overture', is on the cave-riddled island of Staffa. The basalt columns here are a northern extension of the Giant's Causeway. Discovered by the Vikings and also in 1772 by Sir Joseph Banks, viewed by Queen Victoria, Sir Walter Scott and Samuel Johnson, this is one of Scotland's most famous islands. It is best viewed from the sea where the colour of the waters within the cave and its rising columns are at their most impressive.

Day 7 'The Garden of the Hebrides'

Surrounded by the high peaks of the Skye Cullins, Loch Scavaig leads to one of the most romantic and dramatic lochs in Scotland – freshwater Loch Coruisk. Painted by Turner and a popular destination for the Victorians, this is a powerful landscape promising great hiking and kayaking. We head to the Isle of Canna, which is the most sheltered of the Small Isles, known as 'the Garden of the Hebrides'. Linked by causeway to the island Sanday with its puffin colonies, Canna is green and grassy and has delightful flora and butterflies. Once privately owned by Sir John Lorne Campbell, the island is now the property of The National Trust for Scotland.

Day 8 Reclaimed by Nature

Any visit to this distant and wild archipelago, with its breathtaking sea cliffs, is totally weather-dependent. As a UNESCO double World Heritage Site and the 'jewel in the crown' of the National Trust for Scotland, it is an unforgettable experience. The outlying stacs and islands, which are the remains of a volcanic crater, provide ledges for thousands of nesting seabirds. Minke whales are frequently seen around the swirling waters of the archipelago. Once home to Britain's most remote island community, it was evacuated in 1930 at their own request after 5,000 years of continuous habitation. The tiny museum that remains is a record of how hard life was on this exposed island.

Day 9 Capital of the Outer Hebrides

Originally a Viking settlement, Stornoway is the main town of the Western Isles and the capital of the Isle of Lewis, which is the largest and most northerly of the Outer Hebrides. A bustling harbour and waterfront with museums and art galleries are overlooked by the handsome Lews Castle which we invite you to explore with us. Further afield are mills and cottages where



The Small Cruise Ship Collection

www.small-cruise-ships.com



small-cruise-ships.com

info@small-cruise-ships.com

hard-wearing Harris Tweed is woven. There are tiny folk museums, the world-famous Callanish Standing Stones, and the mysterious Carloway Broch - the best-preserved fort in Scotland dating back more than 2,000 years.

Day 10 In Memory of Magnus

Kirkwall is the largest town and the capital of the Orkney archipelago. The first mention of a settlement here is in a saga from 1046, and the name Kirkwall derives from the Norse `Kirkjuvagr` (Church Bay). Today, Kirkwall has a population of 8,500, and is one of the most attractive and well-preserved small towns in Scotland. The community is dominated by the famous St. Magnus Cathedral. A local saga tells the story of how Magnus, kidnaped from the islands, refused to fight with the Vikings or condone their violence. Magnus eventually returned home, only to be put to death for his pacifism, and the church was named in his memory.

Day 11 A Scenic Stop for Birds

Lonely Fair Isle with its high red-sandstone cliffs and gentle rolling fields is a vital stop for migrating birds and has had a permanent Bird Observatory since 1948. Synonymous with unique geometric knitwear possibly of Spanish or Scandinavian origin, the island also boasts a mini 'Lighthouse Keepers' golf course and a friendly, self-sufficient population.

Day 12 At the Centre of Scotland's Shetland Islands

Lerwick is the main port of the Shetland Islands and by far the northernmost town of Scotland. Founded in the 17th century as a fishing port, today Lerwick is a bustling, cosmopolitan town. The old waterfront is still active with visiting yachts and working fishing boats. The area boasts some of Shetland's most attractive scenery and an extraordinary concentration of

archaeological sites, including two remarkable Iron Age villages.

Day 13 City of Seven Mountains

We bid farewell after a voyage of discovery. Before heading home, visit the fish market and stroll through Bergen's historic harbour area, fronted by wooden houses dating back as far as the 1300s. You can also take a trip up to nearby Mount Fløyen via funicular tram for views over the city and surrounding mountains.

Please Note:

Hurtigruten offers unique expedition cruises to some of the most remote and pristine waters of the world. As with all expeditions; nature prevails. Weather, and ice and sea conditions, sets the final framework for all Hurtigruten's operations. Safety and unparalleled guest experiences are at all times our top priorities. All our indicative itineraries are continuously evaluated for adaptations, whether this is due to constraints the elements unexpectedly presents - or exciting possibilities nature and wildlife offer. That is why we call it an expedition.



The Small Cruise Ship Collection

www.small-cruise-ships.com

01432 507 280 (within UK)

info@small-cruise-ships.com | small-cruise-ships.com



The Small Cruise Ship Collection

www.small-cruise-ships.com



small-cruise-ships.com

info@small-cruise-ships.com

YOUR SHIP: SPITSBERGEN

YOUR SHIP:

Spitsbergen

Expedition Passenger Capacity:

335 Built / refurbished: 2009 /

VESSEL TYPE:

2016

LENGTH:

PASSENGER CAPACITY:

BUILT/REFURBISHED:

Completely rebuilt in 2016, the 100 metre MS Spitsbergen features high technical standards as well as comfortable, modern public areas and cabins. The vessel's fresh Scandinavian design reflects a colour palette derived from the sea. She is modern and environmentally progressive, and further improvements that will reduce emissions and fuel consumption even more are in process. The new ship's maneuverability and optimal size make her quite suitable for exploring polar waters of both the Arctic and Antarctica. Spitsbergen has a wide range of facilities including a sauna, fitness centre and hot tub, several bars and restaurants and a panoramic lounge. MS Spitsbergen has an on-board Expedition Team and serves as a university at sea. Interesting lectures inside the ship as well as out on the sun deck make this an exciting and educational journey. Topics depend on the season and the waters we sail in. The Expedition Team host a lecture programme and evening gatherings daily. Out on deck you can participate in live points of interest to learn more about the nature, culture and other phenomena we encounter along the coast. In addition, the Expedition Team will

introduce you to the uniquely Norwegian notion of 'friluftsliv' (outdoor life), and encourage you take part in 'friluftsliv' hikes and activities during the journey. Ship Facilities Compass Service Centre Brygga bistro Shop Torget main dining Wi-Fi Lift Guest launderette Panoramic deck 8 Outside bar for events,



decks 7 & 8



The Small Cruise Ship Collection

www.small-cruise-ships.com

01432 507 280 (within UK)

info@small-cruise-ships.com | small-cruise-ships.com



The Small Cruise Ship Collection

www.small-cruise-ships.com



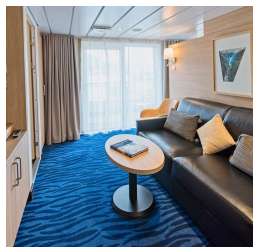
small-cruise-ships.com

info@small-cruise-ships.com

INSIDE YOUR SHIP

Arctic Superior. From

Expedition Suite. From



Polar Inside. From

Polar Outside. From



The Small Cruise Ship Collection

www.small-cruise-ships.com

01432 507 280 (within UK)

info@small-cruise-ships.com | small-cruise-ships.com



The Small Cruise Ship Collection

www.small-cruise-ships.com



small-cruise-ships.com

info@small-cruise-ships.com

PRICING

20-May-2024 to 01-Jun-2024

Polar Outside. From	£4743 GBP pp
Polar Inside. From	£4020 GBP pp
Expedition Suite. From	£7075 GBP pp
Arctic Superior. From	£5467 GBP pp



The Small Cruise Ship Collection

www.small-cruise-ships.com

01432 507 280 (within UK)

info@small-cruise-ships.com | small-cruise-ships.com