



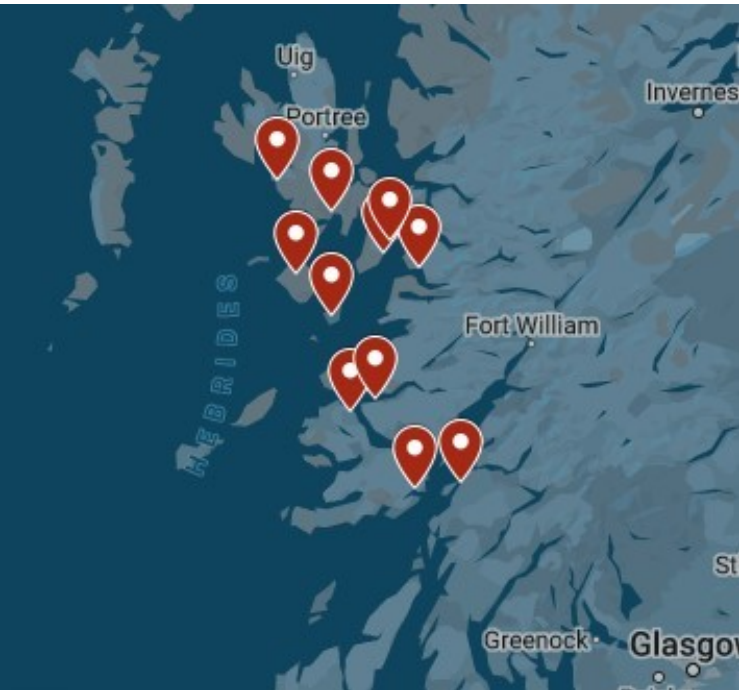
The Small Cruise
Ship Collection

www.small-cruise-ships.com

small-cruise-ships.com info@small-cruise-ships.com

SCOTLAND'S WILD ISLES CRUISE: ISLE OF SKYE AND THE SMALL ISLES

A cruise around the sea lochs of the Isle of Skye and the Small Isles (Muck, Eigg, Rum and Canna) has to be one of the best ways to visit Scotland's Wild Isles. Extraordinary Scottish wildlife is everywhere from minke and occasional killer and humpback whales, dolphins, porpoises, basking sharks, otters to many species of rare sea birds, especially sea and golden eagles. Throughout this Wild Isles cruise you will anchor in secluded sea lochs and sail against a spectacular backdrop of dramatic, pristine island coastlines, high sea cliffs, wild mountains and forests. Don't forget your walking boots for stunning island walks and your swimwear for some tranquil wild swimming. You start your cruise from Oban (Dunstaffnage marina) and visit the stunning Small Isles and the west coast of Skye, which in Loch Scavaig has the most spectacular wilderness anchorage in the whole of Scotland. We travel along the west coast of Skye and at the next anchorage you can even visit Skye's famous Talisker malt whisky distillery. This cruise can be a seven or eight night itinerary depending on the dates you choose to travel.



ITINERARY

Days 1 - 9 Scotland's Wild Isles

Oban: Your departure point will be Oban (Dunstaffnage Marina), the gateway to the Hebridean isles. After a short introduction to life on board our small ship we depart for our first destination.

Loch Aline: In the picturesque Loch Aline there are woodland walks and, at the head of the loch, is ancient Ardtornish estate and woodland gardens.

Tobermory: One of the most picturesque towns in the Hebridean Isles with its famous whisky distillery and colourful waterfront. You can wander along the streets, visit the delightful local museum, perhaps watch a pipe band,

The Small Cruise
Ship Collection

www.small-cruise-ships.com

01432 507 280 (within UK)

info@small-cruise-ships.com | small-cruise-ships.com



The Small Cruise Ship Collection

www.small-cruise-ships.com



small-cruise-ships.com

info@small-cruise-ships.com

admire the wooden fishing boats and take in the long history of this lovely village. Rum, Loch Scresort, the Small Isles: Rum Island is a National Nature Reserve and famous for its herds of red deer and sheer sea cliffs which are home to nesting sea eagles. Canna, the Small Isles: Canna is possibly the most beautiful of all the Small islands. Its 200 metre high cliffs of Compass Hill rise dramatically out of the sea and we have a good chance of seeing both sea and golden eagles. The anchorage on Canna is one of the best of the Small Isles and a stroll ashore to see the puffins and wild flower meadows of Sanday's Machair is a pure delight. Loch Scavaig, Isle of Skye: The most dramatic anchorage in Scotland, if not Europe. The loch is situated below the mighty Black Cuillins mountains, famous for their difficult rock climbs, and a large colony of seals on Sgeir Doigich. Make sure to make time to enjoy this breathtaking wilderness. Loch Harport, Isle of Skye: Home to the famous Talisker malt whisky distillery. Loch Drumbuie: Just south of Oronsay is secluded Loch Drumbuie, situated between the island and the mainland. A squeeze between high sided cliffs and we are in a perfectly sheltered anchorage. Loch Spelve: A narrow entrance leads us in to the tranquil waters of Loch Spelve with its surrounding ancient oak forest. If we are lucky we might spot an otter along the loch shore. We can also pick up some locally grown mussels before we leave to our next destination.

Please Note:

Please note that your voyage is weather dependent. Weather doesn't just mean good or bad weather. There are many considerations such as tidal gates, wind direction and strength, the strength and direction of currents, overfalls, and fetch. Depending upon the weather and nature's conditions, wildlife

viewing varies. If you wish to visit a specific place or have a specific experience, such as sea eagle tours or whisky tasting, then please do let your skipper know and he will endeavour to meet your request. Excursions and visits ashore are at your own cost.



The Small Cruise Ship Collection

www.small-cruise-ships.com

01432 507 280 (within UK)

info@small-cruise-ships.com | small-cruise-ships.com



The Small Cruise
Ship Collection

www.small-cruise-ships.com



small-cruise-ships.com

info@small-cruise-ships.com

YOUR SHIP: GEMINI EXPLORER

YOUR SHIP:

Gemini Explorer

VESSEL TYPE:

LENGTH:

PASSENGER CAPACITY:

BUILT/REFURBISHED:

Gemini Explorer, a mini cruise ship, is a historic, converted cruising lifeboat that once roamed the Western Approaches and was involved in the storm of the ill-fated 1979 Fastnet Race. Gemini Explorer was built in 1974 in Bideford Shipyard as the City of Bristol (70-003), one of three, Clyde class, cruising lifeboats (see Wikipedia) with an extended offshore range of 1700 miles. She is powered by two powerful Gardner diesel engines and she will achieve speeds of up to twelve knots. The Gemini Explorer entered service at the Clovelly Lifeboat Station on the North Devonshire coast and, after saving 44 lives, was finally retired in 1989. Since then, after extensive re-fits and modifications (including a new galley, high bulwarks, viewing top deck, en-suite accommodation and a well lit saloon), she has been converted to a mini cruise ship and today sails as the Gemini Explorer. However, there are parts of the insides of the vessel that have been kept in their original state to give an exciting insight in to role she once played as a cruising lifeboat. As a mini cruise ship she has voyaged as far away as Greenland and, for the last 10 years, sailed as a charter vessel on the east coast of Scotland. In 2020 after a further refit and upgrade she will be sailing the beautiful islands and sea lochs of Scotland's

west coast as part of St Hilda Sea Adventures little fleet. Accommodation The deck saloon is where everyone dines and socialises and where everyone enjoys a convivial atmosphere that is encouraged by shipboard life aboard this ex-cruising lifeboat. Cabins are warm and comfortable with eight berths for our guests. In the forward part of the vessel there is a double en-suite, a twin en-suite and single en-suite. In the aft part of the vessel there is a cabin which can sleep up to three guests (choice of one double bed and two single berths). This aft cabin shares the bathroom with the two crew. All en-suites and the bathroom have a washbasin, toilet and shower. All cabin linen and towels are supplied. There is an upper viewing deck complete with teak benches and perfect for spotting wildlife and relaxing. You also have some deck space to embark your own equipment such as kayaks and paddleboards. You will also be able to use the onboard two person



The Small Cruise
Ship Collection

www.small-cruise-ships.com

01432 507 280 (within UK)

info@small-cruise-ships.com | small-cruise-ships.com



The Small Cruise Ship Collection

www.small-cruise-ships.com



small-cruise-ships.com

info@small-cruise-ships.com



sea kayak.



The Small Cruise Ship Collection

www.small-cruise-ships.com

01432 507 280 (within UK)

info@small-cruise-ships.com | small-cruise-ships.com

The Small Cruise Ship Collection

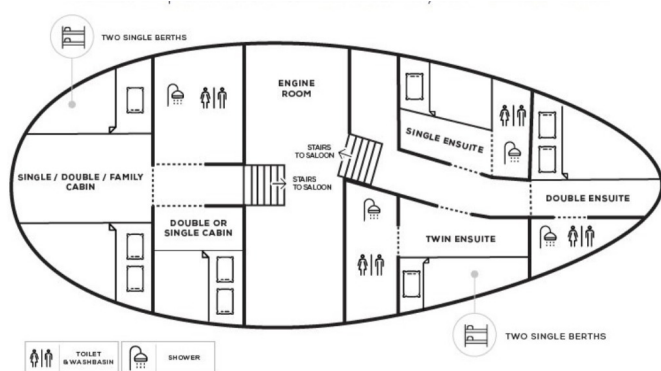
www.small-cruise-ships.com



small-cruise-ships.com

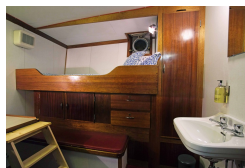
info@small-cruise-ships.com

INSIDE YOUR SHIP



Double / Twin Cabin En-suite

Double Cabin En-suite



Single Cabin

Single Cabin En-suite



Twin / Double Cabin En-suite

Twin Cabin

Twin Cabin En-suite

Twin Cabin Semi En-suite



The Small Cruise Ship Collection

www.small-cruise-ships.com



small-cruise-ships.com

info@small-cruise-ships.com

PRICING

19-May-2024 to 27-May-2024

Double Cabin En-suite	£2400 GBP pp
Twin Cabin En-suite	£2080 GBP pp
Twin Cabin	£1520 GBP pp

17-Jun-2024 to 25-Jun-2024

Double Cabin En-suite	£2400 GBP pp
Twin Cabin En-suite	£2080 GBP pp
Twin Cabin	£1520 GBP pp

03-Aug-2024 to 11-Aug-2024

Twin Cabin	£1520 GBP pp
Twin Cabin En-suite	£2080 GBP pp
Double Cabin En-suite	£2400 GBP pp

08-Aug-2024 to 16-Aug-2024

Double Cabin En-suite	£3160 GBP pp
Double Cabin adjacent En-suite	£2960 GBP pp
Twin Cabin En-suite	£2800 GBP pp

20-Aug-2024 to 28-Aug-2024

Single Cabin	£1920 GBP pp
Twin Cabin	£2120 GBP pp
Twin / Double Cabin En-suite	£2800 GBP pp
Single Cabin En-suite	£2800 GBP pp

22-Aug-2024 to 30-Aug-2024

Double Cabin En-suite	£2400 GBP pp
Twin Cabin En-suite	£2080 GBP pp
Twin Cabin	£1520 GBP pp

22-Aug-2024 to 30-Aug-2024

Double Cabin En-suite	£2400 GBP pp
Twin Cabin En-suite	£2080 GBP pp
Twin Cabin	£1520 GBP pp

07-Sep-2024 to 15-Sep-2024

Twin Cabin	£2120 GBP pp
Single Cabin En-suite	£2800 GBP pp
Twin / Double Cabin En-suite	£2800 GBP pp
Single Cabin	£1920 GBP pp

09-Sep-2024 to 17-Sep-2024

Twin Cabin Semi En-suite	£2640 GBP pp
Single Cabin	£2480 GBP pp
Double / Twin Cabin En-suite	£2800 GBP pp

30-Apr-2025 to 08-May-2025

Double / Twin Cabin En-suite	£2880 GBP pp
Twin Cabin Semi En-suite	£2720 GBP pp
Single Cabin	£2560 GBP pp

04-May-2025 to 12-May-2025



The Small Cruise Ship Collection

www.small-cruise-ships.com

01432 507 280 (within UK)

info@small-cruise-ships.com | small-cruise-ships.com



The Small Cruise Ship Collection

www.small-cruise-ships.com



small-cruise-ships.com

info@small-cruise-ships.com

Twin Cabin En-suite	£2880 GBP pp
Double Cabin adjacent En-suite	£3040 GBP pp
Double Cabin En-suite	£3240 GBP pp



The Small Cruise
Ship Collection

www.small-cruise-ships.com

01432 507 280 (within UK)

info@small-cruise-ships.com | small-cruise-ships.com



The Small Cruise Ship Collection

www.small-cruise-ships.com



small-cruise-ships.com

info@small-cruise-ships.com

PRICING

10-May-2025 to 18-May-2025

Double Cabin En-suite	£2480 GBP pp
Twin Cabin	£1560 GBP pp
Twin Cabin En-suite	£2120 GBP pp

12-May-2025 to 20-May-2025

Twin / Double Cabin En-suite	£2880 GBP pp
Single Cabin En-suite	£2880 GBP pp
Twin Cabin	£2160 GBP pp
Single Cabin	£1960 GBP pp

20-May-2025 to 28-May-2025

Twin Cabin En-suite	£2120 GBP pp
Double Cabin En-suite	£2480 GBP pp
Twin Cabin	£1560 GBP pp

15-Jun-2025 to 23-Jun-2025

Double Cabin En-suite	£2480 GBP pp
Twin Cabin En-suite	£2120 GBP pp
Twin Cabin	£1560 GBP pp

31-Jul-2025 to 08-Aug-2025

Twin Cabin En-suite	£2120 GBP pp
Twin Cabin	£1560 GBP pp
Double Cabin En-suite	£2480 GBP pp

18-Aug-2025 to 26-Aug-2025

Single Cabin En-suite	£2880 GBP pp
Twin Cabin	£2160 GBP pp
Twin / Double Cabin En-suite	£2880 GBP pp
Single Cabin	£1960 GBP pp

19-Aug-2025 to 27-Aug-2025

Twin Cabin	£1560 GBP pp
Twin Cabin En-suite	£2120 GBP pp
Double Cabin En-suite	£2480 GBP pp

22-Aug-2025 to 30-Aug-2025

Single Cabin	£2560 GBP pp
Double / Twin Cabin En-suite	£2880 GBP pp
Twin Cabin Semi En-suite	£2720 GBP pp

05-Sep-2025 to 13-Sep-2025

Single Cabin	£1960 GBP pp
Twin Cabin	£2160 GBP pp
Single Cabin En-suite	£2880 GBP pp
Twin / Double Cabin En-suite	£2880 GBP pp

07-Sep-2025 to 15-Sep-2025

Twin Cabin En-suite	£2880 GBP pp
Double Cabin adjacent En-suite	£3040 GBP pp
Double Cabin En-suite	£3240 GBP pp

09-Sep-2025 to 17-Sep-2025



The Small Cruise Ship Collection

www.small-cruise-ships.com

01432 507 280 (within UK)

info@small-cruise-ships.com | small-cruise-ships.com



The Small Cruise Ship Collection

www.small-cruise-ships.com



small-cruise-ships.com

info@small-cruise-ships.com

Single Cabin	£2560 GBP pp
Double / Twin Cabin En-suite	£2880 GBP pp
Twin Cabin Semi En-suite	£2720 GBP pp



The Small Cruise
Ship Collection

www.small-cruise-ships.com

01432 507 280 (within UK)

info@small-cruise-ships.com | small-cruise-ships.com