

The Small Cruise Ship Collection

www.small-cruise-ships.com

small-cruise-ships.com

info@small-cruise-ships.com

SCORCHING SICILY - MEDITERRANEAN SAILING CRUISE

Embark on an unforgettable 8-day sailing cruise to Sicily and Malta, where you'll discover the captivating beauty and rich cultural heritage of these Mediterranean gems. Start your journey in Valletta, Malta's enchanting capital, before setting sail beneath full sails, experiencing the thrill of the open sea. Explore Trapani in Sicily, where Europe's most active volcano, Mount Etna, looms over fertile plains and barren crater landscapes. Immerse yourself in Sicily's millennia-old culture as you wander through the ancient ruins of Ortigia and the medieval mountain village of Erice. Discover the vibrant city of Palermo, with its private palazzo and the magnificent Cappella Palatina. Visit Lipari, one of the Aeolian Islands, and be enchanted by its picturesque charm. Experience the romance of Taormina, nestled against a volcanic panorama, with its romantic alleys, flower-covered stairs, and breathtaking views over the sea. Finally, explore Syracuse, another historic gem in Sicily, before returning to Valletta, where your journey ends, leaving you with lasting memories of this incredible Mediterranean voyage.



ITINERARY

DAY 1 | VALLETTA/MALTA

Departure 07.00 pm Climbing the rigging, untying ropes, setting sails - today is all about sailing. The First Officer will provide deeper insights into the fascinating world of a tall ship.

DAY 2 | DAY BENEATH FULL SAILS



The Small Cruise Ship Collection

www.small-cruise-ships.com

small-cruise-ships.com

info@small-cruise-ships.com

Climbing the rigging, untying ropes, setting sails - today is all about sailing. Time to lean back and relax in the deck chair and watch the passionate crew hoisting the sails by hand.

DAY 3 | TRAPANI/SICILY

Arrival 08.00 am, Departure 02.00 pm Spend the day sunbathing, enjoy the fresh wind breeze, and relax into the day!

DAY 4 | PALERMO/SICILY

Arrival 08.00 am, Departure 06.00 pm The character of Palermo, Sicily's vibrant capital, was mainly forged by the Arabs, Swabian dynasty and Normans. Noble palaces line the magnificent streets, cheerful-looking Art Nouveau houses stand next to Baroque buildings and a little further on you are faced with pure Gothic facades. The medieval quarter towers above the huge Palazzo Reale with its "Capella Palatina", a masterpiece in the Arab-Byzantine-Norman style. The small mountain town of Monreale gives you a breathtaking view over the town and the bay, as well as the 12th century cathedral whose interior combines Romanesque, Byzantine and Arab art with rich gold mosaics.

DAY 5 | LIPARI/AEOLIAN ISLANDS

Arrival 08.00 am, Departure 01.00 pm Lipari is a tranquil little spot and the largest of the Aeolian Islands, with a cultural

heritage stretching back over 6,000 years. Right from first glance you can see its volcanic heritage, with some of the rock formations resembling sculptures, and the entire group of islands is a UNESCO World Heritage Site. The Aeolian Museum is set on the castle hill and holds an impressive collection of prehistoric and ancient artefacts from this volcanic group of islands. You will find the southern Italian way of life in this little port infectious.

DAY 6 | TAORMINA (NAXOS)/SICILY

Arrival 07.00 am, Departure 02.00 pm Taormina is perched on a rock with a majestic view over the sea. In the 19th century, this small town had already developed into a dream destination for well-heeled travellers and artists. The town's fascination lies in its elegance, the many ancient buildings, the stunningly beautiful coastline, the mild climate, and the view over the silhouette of Etna. Europe's largest volcano is over 3,000 meters (9,843 foot) high, has four summit craters and around 400 subsidiary craters, and is covered with snow almost all year round. In ancient times it was considered the seat of the gods, but nowadays large sections of it are a nature reserve.

DAY 7 | SYRACUSE/SICILY

Arrival 08.00 am, Departure 02.00 pm The municipal area of Syracuse boasts relics from cultural history going back more than three millennia. In ancient times, the city was the most powerful in the known world and was famed for its splendour. The island of Ortigia, now a UNESCO World Heritage Site, was where Syracuse began its rise as an ancient city. The huge



cathedral is at the heart of the old town, magnificent palaces line the Piazza and wide promenades invite you to take a stroll. The archaeological park brings Greek and Roman history back to life. Yet Syracuse exudes southern Italian charm, with washing drying outside the windows.

DAY 8 | VALLETTA/MALTA

Arrival 08.00 am This strategically important location has always attracted foreign conquerors. More than 7,000 years ago, a civilisation existed here, leaving behind enormous temple complexes. Just like proud Valletta, these are now UNESCO World Heritage Sites. Jean Parisot de la Valette, Grand Master of the Order of St John, founded a modern fortified city on a rock in 1566, between the two splendid natural ports of Marsamxett and Grand harbor. Long rows of facades made from golden-yellow blocks of chalk stretch along the straight streets. Splendid Renaissance and Baroque buildings are evidence of riches and power, such as the Palace of the Grand Master and the impressive St John's Co-Cathedral.

Please Note:

Itineraries are subject to change.

The Small Cruise Ship Collection

www.small-cruise-ships.com

small-cruise-ships.com

info@small-cruise-ships.com

YOUR SHIP: SEA CLOUD II

YOUR SHIP:	Sea Cloud II
VESSEL TYPE:	Tall Ship (Sailing)
LENGTH:	105 metres
PASSENGER CAPACITY:	96
BUILT/REFURBISHED:	2001

Launched in 2001, Sea Cloud II is a stunning vessel, built along traditional lines, but offering deluxe accommodation. She combines timeless elegance of sailing ships of the past with the highest safety standards and the luxurious comfort of modern cruise ships. Just like her legendary sister ship Sea Cloud, the 29,600 square feet of sails is set by hand which is a truly magical sight. Built to accommodate 96 passengers in five star luxury, she offers a range of beautifully appointed suites and cabins which are furnished with great style. All accommodations have outside views and the bathrooms, in light marble, are unusually spacious and extremely comfortable. The finest, carefully chosen fabrics, combined with leather, rattan and other materials, brass and gold, precious woods and marble together create an impressive ensemble. No expense has been spared to create a sympathetic ambience in both the accommodations and public areas and this is reflected throughout the vessel. Public areas include an elegant lounge, library, fitness centre, boutique, lido bar and hospital. The single sitting dining room is airy and modern and the quality of the cuisine and service will be to the highest of standards, as one would expect on a Sea Cloud cruise. Relax on the Lido deck and experience the natural

grandeur of travelling under sail, rekindling memories of a



bygone age.

The Small Cruise
Ship Collection
www.small-cruise-ships.com

01432 507 280 (within UK)

info@small-cruise-ships.com | small-cruise-ships.com

The Small Cruise Ship Collection

www.small-cruise-ships.com

small-cruise-ships.com

info@small-cruise-ships.com

INSIDE YOUR SHIP



Please note that category F cabins have one lower and one upper berth bed

Key
 Cat A Cat B Cat C
 Cat D Cat E Cat F

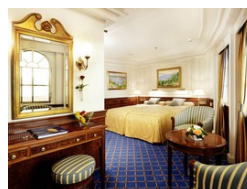
Category A



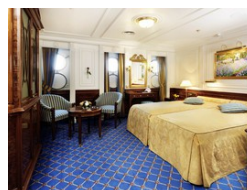
Category B



Category C



Category D



Category E

Category F Upper/Lower Beds



The Small Cruise Ship Collection

www.small-cruise-ships.com

small-cruise-ships.com

info@small-cruise-ships.com

PRICING

24-Jun-2024 to 01-Jul-2024

GTY Double Cabin	£3779 GBP pp
Category F Upper/Lower Beds	£4089 GBP pp
Category E	£4725 GBP pp
Category D	£5267 GBP pp
Category C	£5559 GBP pp
Category B	£6574 GBP pp
Category A	£7297 GBP pp



The Small Cruise Ship Collection

www.small-cruise-ships.com

01432 507 280 (within UK)

info@small-cruise-ships.com | small-cruise-ships.com