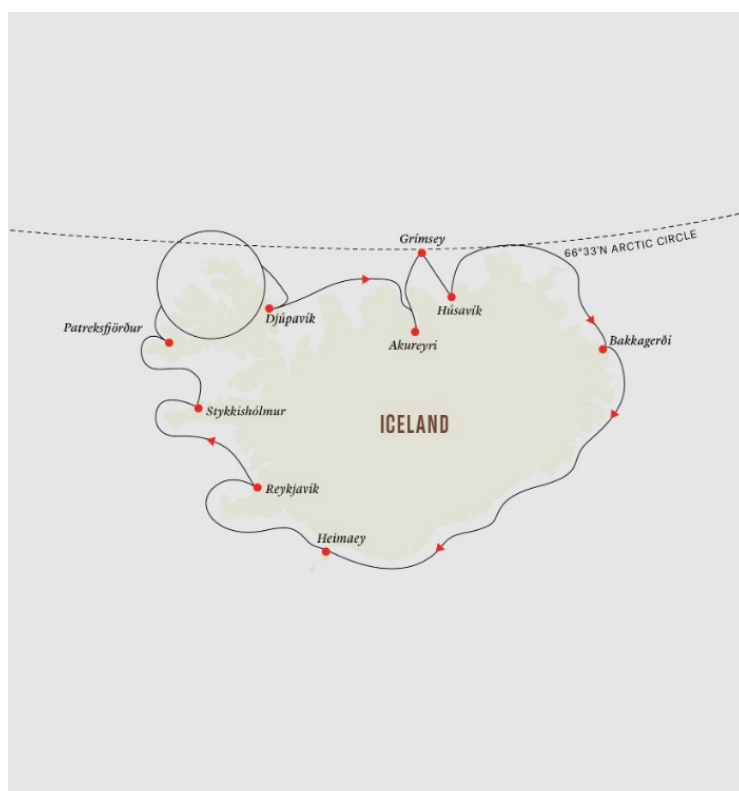




## RING OF FIRE AND ICE – SUMMER CIRCUMNAVIGATION OF ICELAND

Iceland past and present In Reykjavík, you'll get a taste of modern Iceland, with its stylish restaurants, boutiques and galleries, museums delving into Icelandic history and culture through the ages. On tiny islands and in coastal fishing villages, you'll hear tales of elves and epic Viking sagas. Volcanic landscapes, whales and seabirds Discover Iceland's starkly beautiful, volcanic scenery – with active volcanoes, geysers, glaciers, mountains and waterfalls. Iceland offers among the best whale watching in Europe at this time of year, from humpbacks to belugas. Among the birdlife we'll be on the lookout for Atlantic Puffins and many others.



### ITINERARY

#### DAY 1 Relax in Reykjavík

Discover Iceland's modern capital Your Iceland expedition cruise starts in Reykjavík, a city full of art, culture and history. Visit Laugavegur, the main shopping street and head towards the striking Hallgrímskirkja church. Or why not explore the galleries and museums dotted around the city. Once aboard MS Maud – a smaller ship built for more personal exploration – it's time to settle in, meet your Expedition Team, and enjoy a relaxed



## The Small Cruise Ship Collection

[www.small-cruise-ships.com](http://www.small-cruise-ships.com)

[small-cruise-ships.com](http://small-cruise-ships.com)

[info@small-cruise-ships.com](mailto:info@small-cruise-ships.com)

welcome dinner. Pre-Programme With so much to explore, you may want to arrive early to join one of our Pre-Programmes and explore the Golden Circle or Icelandic Highlands.

### DAY 2 Snæfellsnes peninsula

Gateway to spectacular Snæfellsnes It's as though time has stood still at Stykkishólmur, the small fishing town in Breiðafjörður bay, where colourful houses stand out in contrast to distant mountains. Nearby, you'll find Snæfellsnes Peninsula National Park, with the striking, ice-capped Snæfellsjökull volcano at the peninsula's western tip. It's nicknamed 'Little Iceland' for its array of volcanic landscapes. At the national park you can visit Djúpálónssandur's black sand beach and the Lóndrangar basalt cliffs. Or why not ride a snowcat to the top of the Snæfellsjökull glacier, or take a guided coastal hike with a glacial cave tour.

### DAY 3 Beautiful Patreksfjörður

Visit a stunning beach, waterfalls and go birdwatching Patreksfjörður is unforgettably beautiful. Here, you'll learn about the fishing traditions in Europe's most westerly village. You can enjoy a dip in the town's outdoor pool, with wonderful fjord views. Explore the surrounding area on a hike through the fjords or visit Rauðasandur beach and see seals. You can also join a tour to Dynjandi waterfalls – six falls combined that together make the largest and most spectacular falls in the Westfjords. Birdwatchers shouldn't miss a visit to Látrabjarg, where puffins, Northern Gannets, guillemots and razorbills live on Europe's largest bird cliff.

### DAY 4 The Northwestern Region

Explore northwest Iceland, expedition-style One of the best things about expedition cruising is the feeling of freedom. We

plan to spend the day in Iceland's Northwestern Region, but as conditions can vary we won't know exactly what's in store until the day itself. Rest assured, your Captain and Expedition Team will find the best opportunities for adventure. We may take you ashore in our small expedition boats for a hike, swim or beach clean-up. Or perhaps we'll launch our kayaks to explore a pretty cove. Be ready for anything! Don't forget, you can also join onboard lectures, visit the Science Center, get tips from our professional photographer, or soak in a hot tub.

### DAY 5 Djúpavík's old factory

Explore a ghostly factory and hike in magical surroundings The remote village of Djúpavík, at the edge of the Westfjords, has an eerie charm. A vast abandoned herring factory contrasts with a stunning rural setting, and a guided tour of the old building will reveal all. Inside its cavernous interior, huge machines rust away quietly, and the everyday objects of the workers sit on desks untouched. Explore the magical surroundings here on foot and take a short, invigorating hike to the waterfall just above the old factory. Looking down onto the shore, you may spot the old rusting ship from a previous era – this really is a place of contrasts.

### DAY 6 Eyjafjörður to Akureyri

Explore Akureyri and see volcanic moonscapes Today we cruise along Eyjafjörður, Iceland's longest fjord, to Akureyri, Iceland's northern capital. It's a prime area to see humpback whales, white-beaked dolphins and harbour porpoises. Stroll around the interesting streets of Akureyri, which feature charming, colourful houses. You can also learn about the history of the city at the Akureyri Museum, and visit Into the Arctic – Norðurslóð – a museum dedicated to Iceland's settlement, culture and life in the north. Further afield you can visit the picturesque Goðafoss –





## The Small Cruise Ship Collection

[www.small-cruise-ships.com](http://www.small-cruise-ships.com)

[small-cruise-ships.com](http://small-cruise-ships.com)

[info@small-cruise-ships.com](mailto:info@small-cruise-ships.com)

'God's Waterfall' – where turquoise waters pound against black rocks. Seek out Eider and Harlequin Ducks at Lake Mývatn, one of Iceland's more active volcanic areas.

### DAY 7 Grímsey's puffins

Cross the Arctic Circle and see Atlantic Puffins Grímsey is steeped in folklore, including tales of the island's first settler, Grímur. This remote and windswept island, home to just 60 people, is associated with its Atlantic Puffin colonies. But Grímsey is probably best known for its proximity to the Arctic Circle, which cuts across the island – the only part of Iceland where it does so. You'll have the opportunity to step across that line, hopping over to the Arctic and back! Hike to the Orbis et Globus sculpture, a huge concrete sphere that's repositioned each year to fit the northward movement of the Arctic Circle. In fact, by 2050, Grímsey will lie outside the Arctic!

### DAY 8 Whale watching in Húsavík

Iceland's best whale watching spot Today you'll explore Húsavík, a fascinating small town that's one of the best places in the world from which to see whales. Húsavík looks out over Skjálfandi bay, which enjoys visits from humpback and minke whales, as well as white-beaked dolphins, harbour porpoise and even the elusive blue whale. Learn more about them at Húsavík's Whale Museum. You can also enjoy the geothermal waters at Geosea, which overlooks Skjálfandi bay, and refresh with a beer at the local microbrewery.

### DAY 9 Hike in Bakkagerði

Local folklore and natural beauty Your Iceland cruise continues to Bakkagerði, a tiny settlement a bit off the beaten track. According to folklore, Bakkagerði is inhabited by a large population of local land spirits or elves, known as huldafólk,

meaning 'hidden people'. A popular hiking area, you can walk through lush, green valleys and gorgeous scenery among colourful rhyolite rocks. The coastal cliffs are home to fulmars, kittiwakes, eiders and puffins. We may also visit the Atlantic Puffin colony on Hafnarhólmi – a true gem for nature lovers and wildlife photographers.

### DAY 10 Heimaey's explosive past

Discover the town that defied a volcano Heimaey is the only inhabited island in the Westman Islands, found off the south coast of Iceland. It has a fascinating history and still bears the scars of the powerful 1973 volcanic eruption that nearly destroyed the island. Visit Eldheimar, a museum that features an excavated home frozen in time, and learn more about the eruption and its aftermath. Or why not take a hike to seek out puffins at Stórhöfði, where around eight million nest every summer. Don't miss climbing Mount Eldfell –at the volcano's summit you'll have incredible views of the town below.

### DAY 11 Reykjavík and beyond

Explore Reykjavík at your leisure Your Iceland expedition cruise concludes back in fascinating Reykjavík. Now is a great chance to see the places you missed when you first arrived. Relaxing with friends in heittur pottur, geothermal waters, is part of Icelandic culture. Before you leave, why not visit Iceland's most famous place for doing just that – the Blue Lagoon –one of the true natural wonders of the world. Here, you'll experience the blend of silica, algae and minerals in its geothermal waters. Post-Programme You can also join our Post-Programme and explore Iceland's beautiful south coast, with waterfalls, black sand beaches, geothermal springs and majestic mountains.

Please Note:



# The Small Cruise Ship Collection

[www.small-cruise-ships.com](http://www.small-cruise-ships.com)

[small-cruise-ships.com](http://small-cruise-ships.com)

[info@small-cruise-ships.com](mailto:info@small-cruise-ships.com)

Itineraries are subject to change.



The Small Cruise Ship Collection

[www.small-cruise-ships.com](http://www.small-cruise-ships.com)

**01432 507 280** (within UK)

[info@small-cruise-ships.com](mailto:info@small-cruise-ships.com) | [small-cruise-ships.com](http://small-cruise-ships.com)



## YOUR SHIP: MAUD

**YOUR SHIP:** Maud

**VESSEL TYPE:**

**LENGTH:**

**PASSENGER CAPACITY:**

**BUILT/REFURBISHED:**

Equipped with battery packs and other green technology, Maud will operate year-round expedition cruises along the Norwegian coast from 2021. You will be able to explore Norway like never before, with all the comforts, facilities and expertise you need for creating a perfect adventure. Maud will also be equipped for shore power, to cut emissions to zero when docked in ports with shore power facilities, and she will be fitted with low-emission engines, complying with all known and upcoming regulations. Cabins and public areas Norway's stunning scenery is reflected in the ship's interior design. Comfortable cabins and suites feature natural Scandinavian materials, such as granite, oak, birch and wool. Our stylish and welcoming public areas create great places to watch the world's most beautiful coastline pass by. A specially designed Expedition Launch zone - the tender pit area where guests embark on their on their excursions and off-ship adventures - will be added, complete with tender boats and other expedition equipment. A new Science Center will be added. Packed with state-of-the-art technology and high-tech gadgets such as touch screens, science equipment and other interactive features, the edutainment area will also be the on-board HQ for the ship's Expedition Team. A wellness-area,

complete with gym, lounge and treatment rooms, will be built. There will be a range of restaurants : Restaurant Aune, an expedition cruise main restaurant concept. Aune will be social and informal with the use of natural elements in design and interiors, and serves breakfast, lunch and dinner based on a Scandinavian identity. Restaurant Lindstrøm, a specialty restaurant named after the favorite chef of the Norwegian polar heroes, will be added. Lindstrøm will be an upper premium fine dining restaurant with strong roots in traditional Norwegian cooking that are contrasted with modern cuisine. The informal eatery Fredheim, named after a legendary 1920s hunting station in Svalbard that sheltered adventurers from around the world. In addition, a new outdoor grill venue will be added outdoor on the top decks. Honouring explorer heritage MS Maud is named after one of the most famous polar vessels of all time, Roald Amundsen's "Maud" from 1917. The original "Maud" got her name from the first Queen of modern





# The Small Cruise Ship Collection

[www.small-cruise-ships.com](http://www.small-cruise-ships.com)



[small-cruise-ships.com](http://small-cruise-ships.com)[info@small-cruise-ships.com](mailto:info@small-cruise-ships.com)



-day Norway.



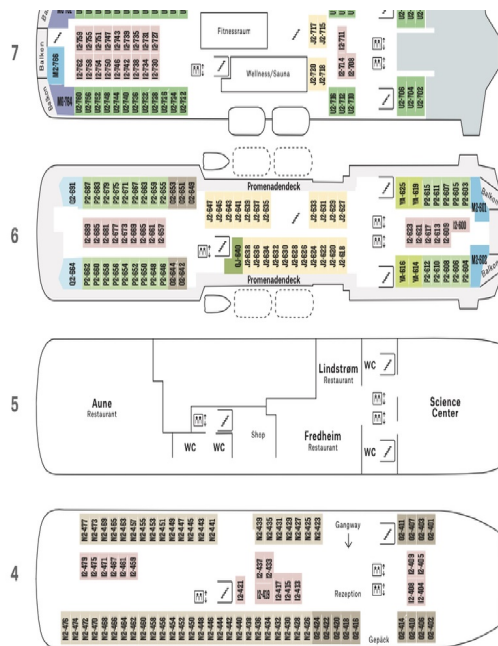
The Small Cruise  
Ship Collection

www.small-cruise-ships.com

small-cruise-ships.com

info@small-cruise-ships.com

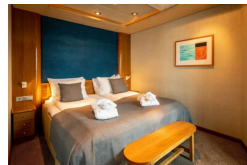
## INSIDE YOUR SHIP



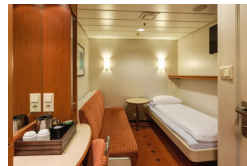
Arctic Superior. From



Expedition Suite. From



Polar Inside. From



Polar Outside. From



The Small Cruise  
Ship Collection

www.small-cruise-ships.com

01432 507 280 (within UK)

info@small-cruise-ships.com | small-cruise-ships.com





The Small Cruise  
Ship Collection

[www.small-cruise-ships.com](http://www.small-cruise-ships.com)

[small-cruise-ships.com](http://small-cruise-ships.com)

[info@small-cruise-ships.com](mailto:info@small-cruise-ships.com)

## PRICING

### 08-Jul-2024 to 18-Jul-2024

Expedition Suite. From	£9297 GBP pp
Polar Inside. From	£4344 GBP pp
Arctic Superior. From	£5430 GBP pp
Polar Outside. From	£4605 GBP pp

### 06-Aug-2024 to 16-Aug-2024

Polar Inside. From	£4344 GBP pp
Arctic Superior. From	£5430 GBP pp
Polar Outside. From	£4605 GBP pp
Expedition Suite. From	£9297 GBP pp



The Small Cruise  
Ship Collection

[www.small-cruise-ships.com](http://www.small-cruise-ships.com)

01432 507 280 (within UK)

[info@small-cruise-ships.com](mailto:info@small-cruise-ships.com) | [small-cruise-ships.com](http://small-cruise-ships.com)