



## REYKJAVIK TO REYKJAVIK 19 DAY ADVENTURE LUXURY CRUISE

Heed the intoxicating call of the north, writing epic tales of Arctic adventure. You'll see it all on this trip aboard the Silver Endeavour - Silversea's ultra-luxury, polar-class vessel. Venture from the glorious scenery of the land of ice and fire to astonishing Greenland's enormous fjord systems and colossal ice sheet. Canada's islands invite you to interact with remote cultures and trace down amazing polar bears. Conclude by exploring Quebec and navigating for the hooked peninsular of Cape Cod.



### ITINERARY

Day 1 Pre Cruise

Day 2 Reykjavik ICELAND

The capital of Iceland's land of ice, fire and natural wonder, Reykjavik is a city like no other - blossoming among some of the world's most vibrant and violent scenery. Home to two-thirds of Iceland's population, Reykjavik is the island's only real city, and



small-cruise-ships.com

info@small-cruise-ships.com

a welcoming and walkable place - full of bicycles gliding along boulevards or battling the wind when it rears up. Fresh licks of paint brighten the streets, and an artistic and creative atmosphere embraces studios and galleries - as well as the kitchens where an exciting culinary scene is burgeoning. Plot your adventures in the city's hip bars and cosy cafes, or waste no time in venturing out to Iceland's outdoor adventures. Reykjavik's buildings stand together in a low huddle - below the whip of winter's winds - but the magnificent Hallgrímskirkja church is a solid exception, with its bell tower rising resolutely over the city. Iceland's largest church's design echoes the lava flows that have shaped this remote land and boasts a clean and elegant interior. The Harpa Concert Hall's sheer glass facade helps it to assimilate into the landscape, mirroring back the city and harbour. Its LED lights shimmer in honour of Iceland's greatest illuminated performance - the northern lights. Walk in the crusts between continents, feel the spray from bursts of geysers and witness the enduring power of Iceland's massive waterfalls. Whether you want to sizzle away in the earth-heated geothermal pools, or hike to your heart's content, you can do it all from Reykjavik - the colourful capital of this astonishing outdoor country.

#### Day 3 Day at sea INTERNATIONAL WATERS

Days at sea are the perfect opportunity to relax, unwind and catch up with what you've been meaning to do. So whether that is going to the gym, visiting the spa, whale watching, catching up on your reading or simply topping up your tan, these blue sea days are the perfect balance to busy days spent exploring shore side.

#### Day 4 Tasiilaq GREENLAND & Sermilligaaq Fjord GREENLAND

#### Day 5 Day at sea INTERNATIONAL WATERS

Days at sea are the perfect opportunity to relax, unwind and catch up with what you've been meaning to do. So whether that is going to the gym, visiting the spa, whale watching, catching up on your reading or simply topping up your tan, these blue sea days are the perfect balance to busy days spent exploring shore side.

#### Day 6 Watkins Fjord GREENLAND

#### Day 7 Ittoqqortoormiit GREENLAND

In the 1920s the sparsely settled coast of East Greenland had too many families living in Ammassalik (today's Tasiilaq) for the hunting grounds available and in 1925 Scoresbysund was chosen to start a new settlement with some 70 Inuit from Ammassalik and four families from West Greenland. Less than 10 kilometers from the entrance to the Scoresbysund system, Ittoqqortoormiit ("Big House Dwellers") lies on the southern tip of Liverpool Land, a low and rounded area compared to the steeper mountains further south or into the fjord system. Some 460 inhabitants call Ittoqqortoormiit, one of Greenland's most isolated settlements, their home. Not counting the military and civilian researchers at Daneborg, Northeast Greenland, their closest neighbors actually live in Iceland. Although Greenland's hottest hot springs are located some 8 kilometers south of Ittoqqortoormiit, the village is frozen in some nine months of the year and access to other parts of the country can only be done via the Nerlerit Inaat Airport at Constable Point some 38 km to the north with flights to Iceland and West Greenland. The former village's shop serves as a small museum and features historic photographs and costumes and shows what a typical hunter's home from the 1960s looked like. Today hunting narwhals, seals, polar bears and muskoxen is still an important part of the





life, but tourism is gaining importance.

#### Day 8 Scoresby Sund GREENLAND

Scoresby Sund is the largest and longest fjord system in the world, and exhibits all the natural wonders Greenland has to offer. This labyrinth of islands, fjords and ice boggles the mind at every turn. Named in honour of William Scoresby, the English explorer who mapped the area in 1822, Scoresby Sund today hosts only the small town of Ittoqqortoormiit, although it has been inhabited by many Paleo-Eskimo cultures in the past. The area is incredibly rich in Arctic wildlife, hosting musk oxen, arctic foxes and a wealth of marine life including whales, belugas, narwhals, walrus and seals, as well as several species of sea birds, including King Eiders, Atlantic Puffins and several species of geese which migrate to the area during the fleeting Arctic Summer. It is also one of the best places in the world to see polar bears in their natural habitat, an experience that can never be forgotten. But the scenery is the true highlight of Scoresby Sund. The area is very sheltered, and the waters of the fjords are often glassy and calm, save the vast icebergs which calve off the vast glaciers which drain from the Greenland Ice Sheet into the fjord. Staggering geological variation means no two mountain views are the same, some black, layers and covered with permanent ice, while some are jagged, pinnacled cliffs sweeping out to the fjord to eye-watering heights, crowned with ice that never melts.

#### Days 9 - 10 Scoresby Sund GREENLAND

Scoresby Sund is the largest and longest fjord system in the world, and exhibits all the natural wonders Greenland has to offer. This labyrinth of islands, fjords and ice boggles the mind at every turn. Named in honour of William Scoresby, the English explorer who mapped the area in 1822, Scoresby Sund today

hosts only the small town of Ittoqqortoormiit, although it has been inhabited by many Paleo-Eskimo cultures in the past. The area is incredibly rich in Arctic wildlife, hosting musk oxen, arctic foxes and a wealth of marine life including whales, belugas, narwhals, walrus and seals, as well as several species of sea birds, including King Eiders, Atlantic Puffins and several species of geese which migrate to the area during the fleeting Arctic Summer. It is also one of the best places in the world to see polar bears in their natural habitat, an experience that can never be forgotten. But the scenery is the true highlight of Scoresby Sund. The area is very sheltered, and the waters of the fjords are often glassy and calm, save the vast icebergs which calve off the vast glaciers which drain from the Greenland Ice Sheet into the fjord. Staggering geological variation means no two mountain views are the same, some black, layers and covered with permanent ice, while some are jagged, pinnacled cliffs sweeping out to the fjord to eye-watering heights, crowned with ice that never melts.

#### Days 11 - 15 Expedition Northeast Greenland GREENLAND

Remote, harsh, and breathtakingly beautiful, Northeast Greenland takes the breath away like nowhere else. Administratively, the area is split between Sermersooq and Avanaatta Municipalities and the vast Northeast Greenland National Park, the northernmost and largest national park in the world. So large is this protected wilderness that it is larger than all but the largest twenty nine countries on Earth, and only marine reserves are larger, in terms of protected areas. In the past, the area saw migration by waves of paleo-Eskimo cultures, all taking advantages of the rich hunting in the area, many migrating over the north of Greenland, and down the East Coast. Northeast Greenland is rich in archaeological sites as people



followed the prey with the seasons. Today, the area has no permanent population, but hunters from Ittoqqortoormiit ('People who Live in Big Houses'), the only town in the area, often frequent the area by dogsled, hunting for musk oxen, polar bears, walrus and seals, all of which are common in the area. The non-native population is scattered around a few remote scientific stations, and the legendary Sirius Patrol, an elite branch of the Danish military in charge of enforcing Danish Sovereignty and acting as a long-range reconnaissance unit, travelling by dogsled into the wilderness, often for weeks at a time.

#### Day 16 Day at sea INTERNATIONAL WATERS

Days at sea are the perfect opportunity to relax, unwind and catch up with what you've been meaning to do. So whether that is going to the gym, visiting the spa, whale watching, catching up on your reading or simply topping up your tan, these blue sea days are the perfect balance to busy days spent exploring shore side.

#### Day 17 Stykkisholmur ICELAND & Flatey Island ICELAND

Stykkishólmur, located in western Iceland at the northern end of the Snæfellsnes peninsula, is the commerce center for the area. Its natural harbor allowed this town to become an important trading center early in Iceland's history. The first trading post was established in the 1550s, and still today fishing is the major industry. The town center boasts beautiful and well-preserved old houses from earlier times. Stykkisholmur is very environmentally conscious – it was the first community in Europe to get the EarthCheck environmental certification, was the first municipality in Iceland to start fully sorting its waste, and was the first town in Iceland to receive the prestigious Blue flag eco-label for its harbor. It has also been a European

Destination of Excellence (EDEN), since 2011. Flatey is the 'flat island' just as the name sounds. These days Flatey is mainly seasonally populated with many brightly painted, wooden summer cottages to be found here. Like many other small islands around Iceland though, Flatey was once a hub for fishing and trade. This particular island prospered so much that it was the center of commercial and cultural life in the 19th century for this part of Iceland. Thanks to the surrounding nutrient-rich waters 35 species of birds have been counted on Flatey ranging from Eider Ducks and Atlantic Puffins, to Arctic Terns, Red-necked Phalaropes, Ringed Plover and Snow Buntings.

#### Day 18 Reykjavik ICELAND

The capital of Iceland's land of ice, fire and natural wonder, Reykjavik is a city like no other - blossoming among some of the world's most vibrant and violent scenery. Home to two-thirds of Iceland's population, Reykjavik is the island's only real city, and a welcoming and walkable place - full of bicycles gliding along boulevards or battling the wind when it rears up. Fresh licks of paint brighten the streets, and an artistic and creative atmosphere embraces studios and galleries - as well as the kitchens where an exciting culinary scene is burgeoning. Plot your adventures in the city's hip bars and cosy cafes, or waste no time in venturing out to Iceland's outdoor adventures. Reykjavik's buildings stand together in a low huddle - below the whip of winter's winds - but the magnificent Hallgrímskirkja church is a solid exception, with its bell tower rising resolutely over the city. Iceland's largest church's design echoes the lava flows that have shaped this remote land and boasts a clean and elegant interior. The Harpa Concert Hall's sheer glass facade helps it to assimilate into the landscape, mirroring back the city and harbour. Its LED lights shimmer in honour of Iceland's





greatest illuminated performance – the northern lights. Walk in the crusts between continents, feel the spray from bursts of geysers and witness the enduring power of Iceland’s massive waterfalls. Whether you want to sizzle away in the earth-heated geothermal pools, or hike to your heart’s content, you can do it all from Reykjavik - the colourful capital of this astonishing outdoor country.

Day 19 Post cruise

Please Note:

The excursions are provided as a sample of what may be offered on this voyage and are subject to change.



## The Small Cruise Ship Collection

[www.small-cruise-ships.com](http://www.small-cruise-ships.com)

[small-cruise-ships.com](http://small-cruise-ships.com)

[info@small-cruise-ships.com](mailto:info@small-cruise-ships.com)

### YOUR SHIP: SILVER ENDEAVOUR

**YOUR SHIP:**

**Silver Endeavour**

**VESSEL TYPE:**

**LENGTH:**

**PASSENGER CAPACITY:**

**BUILT/REFURBISHED:**

Designed for polar exploration, Silver Endeavour breaks the ice of luxury expedition travel. Built to PC6 Polar Class specifications - one of the highest Polar Class classifications there is - Silver Endeavour revolutionises our expedition voyages, and allows travel deeper to some of the planet's farthest flung coasts. Her statistics speak for themselves: from unrivalled, industry-leading crew-to-guest, zodiac-to-guest and expert-to-guest ratios, to cutting-edge navigation and exploration technology and hallmark Silversea comfort make her the most luxurious expedition ship ever built. Spread over eight public decks, not only does she feature ample onboard space, multiple restaurants, plus a huge choice of bars and lounges, but her large and luxurious suites are some of the best in expedition cruising. Superbly designed, all her suites feature a balcony and our highest standards of service thanks to an impressive crew-to-guest ratio of 1:1. Mud Room Silver Endeavour's Mud Room is the perfect place to prepare for all your expedition activities. Spaciously designed, the two mud rooms are superbly modern, and equipped with state-of-the-art equipment. Explorer Lounge Strategically located mid-ship on deck 4, the Explorer Lounge is the operational heart of shore

excursions while onboard. This is where you'll attend your daily recap and briefing sessions or attend lectures. Connoisseur's Corner The Connoisseur's Corner is an indulgent and sophisticated cigar lounge, where you can enjoy an after dinner drink in a cosy private club atmosphere. Otium Spa Otium is where you can relax and unwind, but also where you can enjoy world class treatments that make sure you look as good as you feel and that even Venus herself would envy. Observation Lounge The Observation Lounge offers one of our favourite vantage points of Silver Endeavour. Plus 270-degree surrounding glass windows make this immersive venue ideal whatever time of the day. Beauty Salon Our committed and competent team of beauty therapists is here to help keep your hair, nails, skin, and body healthy and happy. Fitness Centre Whether you are a serious keep fit fanatic or casual athlete, you'll find what you're looking for in Silver Endeavour's Fitness Centre. Expertly designed classes and personal training sessions make sure that you keep in shape. Boutique Located mid-ship on Deck 5, the Boutique aboard Silver Endeavour means luxury shopping experiences do not end just because you're at sea! Carefully selected partners offer a wide selection of the latest fashions. Pool Deck Surrounded by glazing extended all the way to the top of the venue, the Pool Deck gives you the feeling of always being connected to the sea. The glass-enclosed pool deck is the ideal place to enjoy breathtaking views. Library Whether you're an avid bibliophile or simply prefer a quiet place while at sea, it's hard not to fall in love with Silver Endeavour's onboard library, with its beautiful reference books, comfortable chairs and



The Small Cruise  
Ship Collection

[www.small-cruise-ships.com](http://www.small-cruise-ships.com)

[small-cruise-ships.com](http://small-cruise-ships.com) [info@small-cruise-ships.com](mailto:info@small-cruise-ships.com)



stunning scenery.





The Small Cruise  
Ship Collection

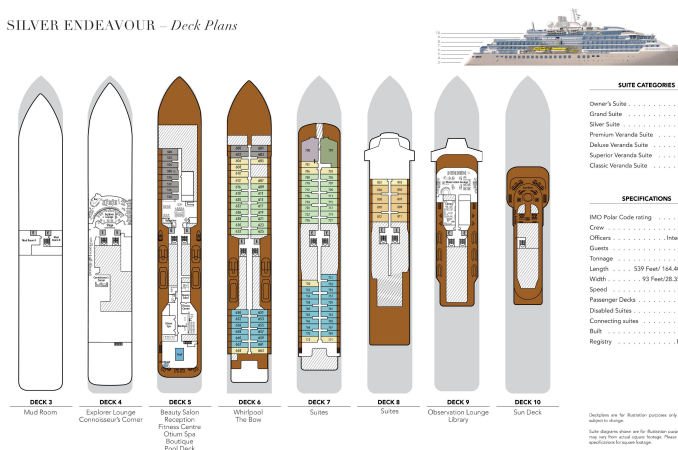
[www.small-cruise-ships.com](http://www.small-cruise-ships.com)

[small-cruise-ships.com](http://small-cruise-ships.com)

[info@small-cruise-ships.com](mailto:info@small-cruise-ships.com)

## INSIDE YOUR SHIP

SILVER ENDEAVOUR – Deck Plans

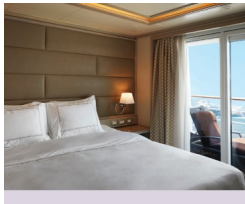
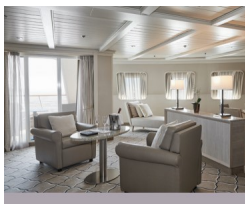


CLASSIC VERANDA SUITE. From DELUXE VERANDA SUITE. From



GRAND SUITE. From

MEDALLION SUITE. From



OWNER'S SUITE. From  
SILVER SUITE. From

ROYAL SUITE. From  
VISTA SUITE. From



The Small Cruise  
Ship Collection

[www.small-cruise-ships.com](http://www.small-cruise-ships.com)

01432 507 280 (within UK)

[info@small-cruise-ships.com](mailto:info@small-cruise-ships.com) | [small-cruise-ships.com](http://small-cruise-ships.com)





## PRICING

21-Aug-2025 to 06-Sep-2025

DELUXE VERANDA SUITE. From	£20196 GBP pp
ROYAL SUITE. From	£68442 GBP pp
OWNER'S SUITE. From	£74511 GBP pp
GRAND SUITE. From	£71706 GBP pp
SILVER SUITE. From	£33354 GBP pp
MEDALLION SUITE. From	£25194 GBP pp
CLASSIC VERANDA SUITE. From	£17289 GBP pp
VISTA SUITE. From	£15147 GBP pp