



The Small Cruise
Ship Collection

www.small-cruise-ships.com



small-cruise-ships.com

info@small-cruise-ships.com

26 DAYS SOUTH PACIFIC LUXURY CRUISE - PAPEETE TO VALPARAISO

Departing from Papeete, this 23-day tour takes in the pearls of the South Pacific, as you sail towards South America. Beginning first with the fragrant and welcoming islands of French Polynesia, enjoy five days of discovery in this archipelago. We will overnight off Pitcairn Island, famous for being the home of some of the mutineers of the HMS Bounty. Then it's three days to relax at sea before reaching Easter Island, home of the world's most enigmatic stone monoliths called Moai. Your final stops are Alexander Selkirk and Robinson Crusoe Islands.



ITINERARY

Day 1 Pre Cruise

__ **PRIVATE EXECUTIVE TRANSFERS, ECONOMY CLASS FLIGHTS or Business Class upgrade at reduced rates, AIRPORT TRANSFERS, HOTEL** __

Day 2 Papeete (Tahiti) FRENCH POLYNESIA



The Small Cruise
Ship Collection

www.small-cruise-ships.com

01432 507 280 (within UK)

info@small-cruise-ships.com | small-cruise-ships.com



The Small Cruise Ship Collection

www.small-cruise-ships.com



small-cruise-ships.com

info@small-cruise-ships.com

Papeete is the center of the tropical paradise of French Polynesia, where islands fringed with gorgeous beaches and turquoise ocean await to soothe the soul. This spirited city is the capital of French Polynesia, and serves as a superb base for onward exploration of Tahiti - an island of breathtaking landscapes and oceanic vistas. A wonderful lagoon of crisp, clear water begs to be snorkelled, stunning black beaches and blowholes pay tribute to the island's volcanic heritage, and lush green mountains beckon you inland on adventures, as you explore extraordinary Tahiti. Visit to relax and settle into the intoxicating rhythm of life in this Polynesian paradise.

Day 3 Fakarava, Tuamotu Archipelago FRENCH POLYNESIA

Fakarava is oblong shaped and has an almost continuous string of reef and motu stretching for 40 km (25 mi) on its eastern edge. It's the second largest of the Tuamotu atolls, located 450 km (280 mi) northeast of Tahiti, and 120 km (75 mi) southeast of Rangiroa. It's renowned for the drift diving in its two passes--Garuae (also spelled Ngarue) in the north near the main town of Rotoava (and the airport) and Tamakohua Pass, 48 km (30 mi) across the lagoon in the south. The tiny village of Tetamanu, situated by the southern pass, was once the capital of the Tuamotus and houses the first church built in the archipelago in 1874. In 2006 the entire atoll was deemed an UNESCO biosphere reserve; to preserve the lagoon no overwater bungalows have been built in it. Fakarava was "discovered" by Russian explorer Fabian Gottlieb Von Bellingshausen in 1820; some 20 years later missionaries arrived, in the guise of

fanatical Catholic priest Honore Laval, and began building churches.

Day 4 Day at sea INTERNATIONAL WATERS

Days at sea are the perfect opportunity to relax, unwind and catch up with what you've been meaning to do. So whether that is going to the gym, visiting the spa, whale watching, catching up on your reading or simply topping up your tan, these blue sea days are the perfect balance to busy days spent exploring shore side.

Day 5 Atuona - Hiva Oa, Marquesas Island FRENCH POLYNESIA & Tahuata, Marquesas Islands FRENCH POLYNESIA

The largest of the southern islands, Hiva Oa, the master pillar or finial post of the 'Great House' \- which represents the Marquesan archipelago in the local mythology - has always been the rival of Nuku Hiva. The island is shaped like a seahorse and has a mountain range running southwest to northeast whose main peaks, Mt. Temetiu and Mt. Feani form a real wall around Atuona. Atuona, a peaceful little port at the head of the Taaoa Bay, also known as Traitors Bay, has emerged from obscurity due to having had the privilege of being the last resting place of Paul Gauguin and of the singer Jacques Brel. The tombs of these famous personalities are on the side of the Calvary cemetery looking out across the bay and are places of great pilgrimage. In the village, the Gauguin Museum displays items related to the painter's stay there at the beginning of the century and has copies of his works. If you're looking for a perfect incarnation of Polynesia's unparalleled beauty, you just



The Small Cruise Ship Collection

www.small-cruise-ships.com

01432 507 280 (within UK)

info@small-cruise-ships.com | small-cruise-ships.com



The Small Cruise Ship Collection

www.small-cruise-ships.com



small-cruise-ships.com

info@small-cruise-ships.com

found it. Discover mesmerising Tahuata and unveil all its secrets. Part of the Marquesas, this is the tiniest inhabited island of the archipelago, with only 700 inhabitants. This croissant-shaped piece of land was discovered in 1595 by Spanish navigator Alvaro de Mendana de Neira and has been a dreamy destination for many travellers since. Indeed, its spectacular and idyllic scenery, made of contrasts between impressive mountains and sandy beaches, would inspire every poet - and not only! How can't you be impressed admiring Meae Ufa, a 3181-foot volcano and the stunning twin bays Ivaiva Nui and Ivaiva Iti? The island is also nicknamed 'Monoï Island' thanks to the great quality of its tiare oil, heritage of traditions and secrets orally transmitted generation to generation. Tahuata has a huge reputation across French Polynesia for another savoir-faire, its rich craftsmanship. The craftsmen excel at carving beautiful pieces, spears, puzzles, dishes they produce on bone or rosewood. These unique creations are exhibited in the craft centre of the pretty village of Hapatoni and in the Vaitahu Town Hall Museum. Very close to one another (15-min boat ride or 30-min walk), these two tiny villages are absolutely worth a visit with their charming mix of Polynesian and European atmosphere. And don't forget to have a swim at Hana Moenoa beach, the island's most beautiful one. Maybe you'll come across sea turtles in its crystal-clear waters.

Day 6 Hatiheu, Nuku Hiva FRENCH POLYNESIA

Shrink before stadium-sized bays of deep water and folded valleys clad with dense green jungle, on arrival in Hatiheu. You'll be warmly welcomed to this raw and ravishing island of natural beauty, legend and awe-inspiring views. Nuku Hiva is the largest

of the Marquesas Islands, which are strung across a blissfully blue Indian Ocean. Remote and wonderful, you can find waterfalls tumbling from cliffs, volleyball-sized breadfruit clustering in trees, and incredible sacrificial sites and petroglyphs. Explore to see cinematic views of sprawling bays unravelling, while on breathtaking mountain hikes and drives. Or take it easy, strolling by the water and watching yachts mingling in the turquoise seas, as sharks circle for offcuts tossed by fishermen. Wild horses trot tight streets, and pigs shuffle through the undergrowth, clambering up and down dense mountainsides. Journey south to see the Tiki Tuhiva carving watching out over rich-blue waves. The gigantic statue is a proud example of the island's resurgent culture, which was almost extinguished by European colonists. Take the chance to duck out of the afternoon sun into the stone-walled shelter of Notre Dame Cathedral, which is decorated with carved sculptures and soaring wooden eaves. The church's crooked towers rise incongruously from the rainforest's tangle - follow the ethereal sounds of choral singing to find it. Nuku Hiva's ceremonial sites, crafts and stone statues add further layers of intrigue to this magical Pacific island.

Day 7 Hanavave, Fatu Hiva FRENCH POLYNESIA

Situated in the middle of the Pacific Ocean, Fatu Hiva is the most isolated island of the most isolated archipelago on the planet. Sometimes called the 'island at the edge of the world', Fatu Hiva is also the greenest, wildest and most mountainous island of the Marquesas. And what mountains! The island's dramatic cliffs and lush valleys, illuminates the extraordinary Polynesian countryside, will give you the impression of being in a



The Small Cruise Ship Collection

www.small-cruise-ships.com

01432 507 280 (within UK)

info@small-cruise-ships.com | small-cruise-ships.com



The Small Cruise Ship Collection

www.small-cruise-ships.com



small-cruise-ships.com

info@small-cruise-ships.com

Paul Gauguin painting. On your arriving in this tropical paradise, you'll be welcomed with the traditional welcome to the Marquesas Islands, 'Mave Mai', involving ancestral dances. Let yourself be carried away by the Haka rhythm before discovering the charming village of Hanavave. After strolling among the village's picturesque fare houses, the authentic Marquesan constructions, uncover the island's hidden gems and secrets. Stunning waterfalls hurling down from impressive peaks forming magnificent lagoons and rushing fresh rivers. Nothing better than a hike to properly appreciate and admire the fabulous scenery that surrounds you. Real highlight of the island, the spectacular Baie des Vierges is said to be one of the most beautiful bays on Earth. These crystal-clear waters are home to myriad of marine life species like manta rays or sea turtles swimming into a ballet of multicolour fishes. What more do you need to believe Fatu Hiva is a true paradise?

Day 8 Day at sea INTERNATIONAL WATERS

Days at sea are the perfect opportunity to relax, unwind and catch up with what you've been meaning to do. So whether that is going to the gym, visiting the spa, whale watching, catching up on your reading or simply topping up your tan, these blue sea days are the perfect balance to busy days spent exploring shore side.

Day 9 Reao FRENCH POLYNESIA

Blink and you'll miss it, Reao is a dazzling drop of paradise, peeking from the immensity of the South Pacific Ocean. It would be a crying shame to overlook it - Reao may be remote, but few

places pack such an immediate punch of peace and tranquillity on arrival. Pukarua Atoll is Reao's closest sibling - another tiny island, which lies 30 miles away. Cast out to the far east of French Polynesia, a handful of low buildings house the few hundred residents of Reao, who warmly welcome intrepid visitors to their far-flung island home. The atoll provides a jaw-dropping arrival - step ashore among swooning coconut palms and crystalline turquoise waters. Ringed by a fringe of pristine white beaches, the narrow loop of sand cradles a stunning interior lagoon. The heavenly water here glows with the full spectrum of evocative Pacific blue hues. Hack open fresh coconuts on the beach for their bounty of liquid refreshment, and surrender to the rejuvenating flow of island-time - where everything moves at precisely the speed it needs to, not a tick faster. The atoll's unique ecosystem helps the island protect a cluster of unique and rare corals - like the tentacled staghorn coral - and you can seek rare shellfish and marine life in these tempting waters. Swim, dive and snorkel to your heart's content, or luxuriate on some of the most beautiful beaches in your own personal Pacific island fantasy, as you explore this distant and dreamy corner of French Polynesia.

Day 10 Mangareva (Gambier Islands) FRENCH POLYNESIA

In the Gambier Islands of French Polynesia, Mangareva is the largest island with a population of over 1,200 people. Most live in Rikitea, the largest village on the island. A high central ridge runs the length of Mangareva peaking with Mt. Duff, which rises over 440 meters from the sea on the island's south coast. The island has a large lagoon sprinkled with coral reefs whose tropical fish and the black-lip oysters have helped islanders



The Small Cruise Ship Collection

www.small-cruise-ships.com

01432 507 280 (within UK)

info@small-cruise-ships.com | small-cruise-ships.com



The Small Cruise Ship Collection

www.small-cruise-ships.com



small-cruise-ships.com

info@small-cruise-ships.com

survive much more successfully than on other nearby islands. Small ships are able to enter the lagoon of Mangareva. Ashore visitors can walk through the town, see the remains of the massive stone and coral buildings dating back to the 19th century or climb up Mt. Duff. The highlights in town include the cathedral with its mother-of-pearl shell altar and objects designed and built in the 1830s and 1840s and partially restored by the students of Rikitea's school just a few years ago.

[Days 11 - 12 Adamstown \(Pitcairn Island\) PITCAIRN](#)

Home to the original mutineers of the Bounty, Adamstown's is today the capital of all four Pitcairn Islands. The islands - the last British Overseas Territory in the Pacific - include the namesake Pitcairn Island itself, plus the uninhabited Oeno, Henderson and Ducie. Pitcairn is the archipelago's only inhabited island, with the population of just 50 centred in Adamstown. It is no surprise that the nine mutineers along with six Tahitian men, 12 Tahitian women and one child stopped on Pitcairn in 1790; with its sloped and varied landscape, lush tropical promise and equidistant location between Peru and New Zealand, Pitcairn would have seemed an ideal hiding spot for the mutineers to settle. The ship was burnt to avoid detection (the ballast stone remains of the wreck in Bounty Bay). However, the ideal bucolic life that mutineer leader Fletcher Christian had envisaged was not to be. Poor treatment of the Tahitian men led to alcoholism, chaos and carnage and by 1800 only John Adams - who had recently discovered Christianity - remained. Adams taught the women and children to read and write from the bible. The capital is named after him. Not only had the island been misplaced on early maps of the

region, but it can also be very difficult to come ashore as large breakers tend to build up just in front of the small harbour of Bounty Bay. The local museum houses the HMS Bounty Bible, the same bible that Adams taught the women and children to read and write from in the early 19th century.

[Days 13 - 15 Day at sea INTERNATIONAL WATERS](#)

Days at sea are the perfect opportunity to relax, unwind and catch up with what you've been meaning to do. So whether that is going to the gym, visiting the spa, whale watching, catching up on your reading or simply topping up your tan, these blue sea days are the perfect balance to busy days spent exploring shore side.

[Days 16 - 17 Easter Island CHILE](#)

Easter Island, the easternmost settled island of Polynesia, received its European name in 1722 when the island was seen by a Dutch expedition under Roggeveen on Easter Sunday. The triangular-shaped island of 163 square kilometers is famous for the hundreds of statues known locally as moai. Rolling hills covered in grassland, eucalyptus forest and a rocky shore surround Hangaroa, the island's only village on the southwestern coast. This is where Captain Cook landed in 1774, where missionaries built the first church and where ships find the best protection from winds and swells. Small beaches and transparent waters invite swimmers and snorkelers, but it is the cultural aspect which attracts visitors. Since 1935 the island has been a National Historic Monument and today 43.5% of the island is a national park administered by the Chilean National



The Small Cruise Ship Collection

www.small-cruise-ships.com

01432 507 280 (within UK)

info@small-cruise-ships.com | small-cruise-ships.com



The Small Cruise Ship Collection

www.small-cruise-ships.com



small-cruise-ships.com

info@small-cruise-ships.com

Forest Corporation and Mau Henua, a local community group. The island's national park has been declared a UNESCO World Heritage Site in 1995. Found slightly more than 3,500 kilometers west of Chile, the island was annexed in 1888. Used as a sheep ranch for many decades, the island was opened in 1965 and an airstrip was built. The US Air Force set up a base to record the behavior of the earth's outer atmosphere and by 1987 NASA had the runway extended as an emergency runway for the space shuttle. This never happened, but tourism benefitted from this improvement and today the island receives more than 100,000 visitors a year.

Days 18 - 21 Day at sea INTERNATIONAL WATERS

Days at sea are the perfect opportunity to relax, unwind and catch up with what you've been meaning to do. So whether that is going to the gym, visiting the spa, whale watching, catching up on your reading or simply topping up your tan, these blue sea days are the perfect balance to busy days spent exploring shore side.

Day 22 Alexander Selkirk Island CHILE

Think of Daniel Defoe's classic novel Robinson Crusoe and you will be picturing an intrepid castaway, marooned on a paradisiacal island. That image might be ideal for movie lovers, but the actual inspiration for Robinson Crusoe was a salty Scottish seadog who went by the name of Alexander Selkirk. Selkirk was marooned in Chile's Juan Fernandez archipelago for four years and four months, rescued by a British private warship. Despite Selkirk's slightly chequered past, he was greeted as a

celebrity upon his return to England. His adventures were given a gloss and immortalised in the much loved 18th century classic. Alejandro Selkirk Island is located 165 kilometres west of the other islands in the archipelago, for a surface area of just under 50 m2. The island was renamed from its Spanish name Isla Mas Afuera in 1966 by the Chilean government in homage to the sailor. The topography is very different from the Caribbean dream that Defoe writes about, think dense woodland, rugged coast and peaks, shrouded (more often than not) in cloud. Sandy beaches can be found to the north of the island. Throughout much of its history, the island has been uninhabited, although there is a former penal settlement on the middle of the east coast, which operated from 1909 to 1930. During the summer months, Selkirk welcomes a small community of lobster fishermen and their families who come from Robinson Crusoe. As part of the Chilean National Park, it also holds the UNESCO World Biosphere Reserve title.

Day 23 Robinson Crusoe Island CHILE

Robinson Crusoe Island is located 600 kilometres off the coast of Chile. The island is a rugged volcanic speck where 70 percent of its plant species are endemic, and is the largest of the Juan Fernandez Islands, a small archipelago that since 1935 is a Chilean National Park which in 1977 was declared a UNESCO World Biosphere Reserve. This island has witnessed and played an important role in Chilean and world history. In 1704 the Scottish sailor Alexander Selkirk was marooned on the island and stayed for more than 4 years, eventually inspiring Daniel Defoe's novel Robinson Crusoe -hence the name of the island. 1750 the village of San Juan Bautista was founded at



The Small Cruise Ship Collection

www.small-cruise-ships.com

01432 507 280 (within UK)

info@small-cruise-ships.com | small-cruise-ships.com



The Small Cruise Ship Collection

www.small-cruise-ships.com



small-cruise-ships.com

info@small-cruise-ships.com

Cumberland Bay and by 1779 there were already 7 small fortresses bristling with guns. The island's isolation offered Spain a splendid place for setting up a penal colony, to which high-ranking Chilean patriots were deported in the early 19th century. In 1915, during the First World War, three British ships and a German one, the Dresden, engaged in a sea battle which ended with the scuttling of the German cruiser. Today there are currently around one thousand people living in the archipelago, most of them in the village of San Juan Bautista engaged in fishing for the "spiny lobster", a delicacy exported to the mainland.

Day 24 Day at sea INTERNATIONAL WATERS

Days at sea are the perfect opportunity to relax, unwind and catch up with what you've been meaning to do. So whether that is going to the gym, visiting the spa, whale watching, catching up on your reading or simply topping up your tan, these blue sea days are the perfect balance to busy days spent exploring shore side.

Day 25 Valparaiso CHILE

Since time immemorial Valparaiso has inspired writers, poets, musicians and artists alike. If the city is still a little rough around the edges, this only adds to its bohemian ambience; the architecture, style, street art, nightlife, and live music scenes of Valparaiso are some of the best in the world. Add colourful cliff-top homes to the mix and you'll soon see why Valparaiso is many people's favourite Chilean city. The city was founded in 1536 by Spanish conquistador Juan de Saavedra, who named

the city after his birthplace. Many of the colonial buildings he implemented are still standing today, despite the rain, wind, fire and several earthquakes (one of which almost levelled the city in 1906). Quirky architecture also abounds; poetry lovers and amateur architects will no doubt want to make the 45 km trip south to Chilean poet laureate (and Nobel Prize winner) Pablo Neruda's ship-shaped house and museum for a taste of the extraordinary. The city and region are also extremely well known for their love of good food and wine. The vineyards of the nearby Casablanca Valley - first planted in the early 1980s - have earned worldwide recognition in a relatively short space of time. However, Chile's viticulture history does date back much farther than that. De Saavedra brought grape vines on his voyage to South America in order to make his own wine and this led to a new grape brandy being created, Pisco. Today give any Chilean a Pisco and wherever they are in the world, they will be home.

Please Note:

The excursions are provided as a sample of what may be offered on this voyage and are subject to change.



The Small Cruise Ship Collection

www.small-cruise-ships.com

01432 507 280 (within UK)

info@small-cruise-ships.com | small-cruise-ships.com



The Small Cruise Ship Collection

www.small-cruise-ships.com



small-cruise-ships.com

info@small-cruise-ships.com

YOUR SHIP: SILVER CLOUD

YOUR SHIP:

Silver Cloud

VESSEL TYPE:

LENGTH:

PASSENGER CAPACITY:

BUILT/REFURBISHED:

With 18-brand new Zodiacs, four superlative restaurants in Antarctica and a pole to pole expedition itinerary, Silver Cloud really does break the ice between expedition and luxury. Spacious yet intimate, designed to cross oceans and yet able to slip up rivers and into hidden harbours with ease, the yacht-like Silver Cloud carries just 296 guests in incomparable comfort and style. Combining spacious ocean-view suites and private verandas with stunning dining and entertainment options, Silver Cloud provides world-class cruise accommodations, service and amenities. After extensive refurbishment, Silver Cloud is the most spacious and comfortable ice class vessel in expedition cruising. Her large suites, her destination itineraries and her unparalleled service make her truly special. Her four dining options will tantalise your taste buds and as 80% of her suites include a veranda, watching a breaching whale or a few cavorting penguins has never been so personal. She carries a limited number of guests in polar waters, meaning that Silver Cloud has the highest space to guest and crew to guest ratios in expedition cruising. With her 18 zodiacs, 10 kayaks, possibilities are almost limitless with ship-wide simultaneous explorations.



The Small Cruise Ship Collection

www.small-cruise-ships.com

01432 507 280 (within UK)

info@small-cruise-ships.com | small-cruise-ships.com

The Small Cruise Ship Collection

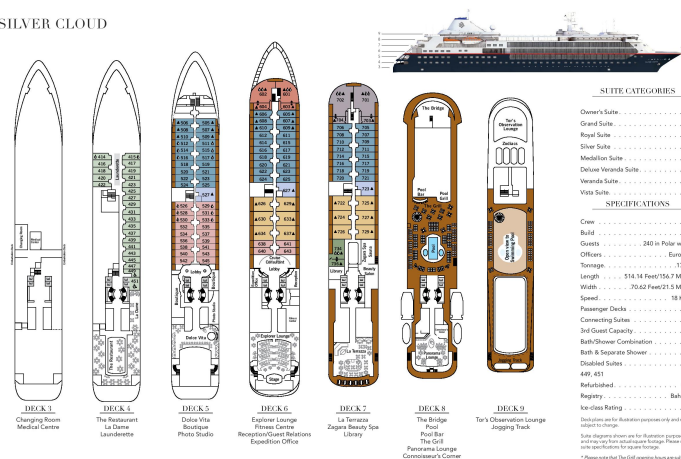
www.small-cruise-ships.com

small-cruise-ships.com

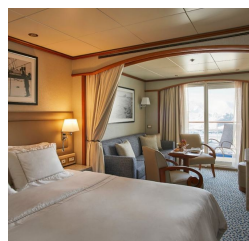
info@small-cruise-ships.com

INSIDE YOUR SHIP

SILVER CLOUD



Deluxe Veranda Suite. From Grand 1 Bedroom



Grand 2 Bedroom
Medallion
Midship Veranda
Owner 2 Bedroom
Royal 1 Bedroom
Royal Suite. From
Silver Suite. From
Veranda Suite. From

Grand Suite. From
Medallion Suite. From
Owner 1 Bedroom
Owner's Suite. From
Royal 2 Bedroom
Silver
Veranda
Vista



The Small Cruise Ship Collection

www.small-cruise-ships.com



small-cruise-ships.com

info@small-cruise-ships.com

PRICING

09-Oct-2025 to 03-Nov-2025

Royal Suite. From	£38659 GBP pp
Veranda Suite. From	£15659 GBP pp
Owner's Suite. From	£43299 GBP pp
Deluxe Veranda Suite. From	£16935 GBP pp
Silver Suite. From	£35345 GBP pp
Grand Suite. From	£42279 GBP pp
Medallion Suite. From	£33815 GBP pp
Vista Suite. From	£14385 GBP pp

11-Oct-2026 to 04-Nov-2026

Silver	£26165 GBP pp
Medallion	£20249 GBP pp
Owner 2 Bedroom	£64619 GBP pp
Grand 2 Bedroom	£66455 GBP pp
Owner 1 Bedroom	£40905 GBP pp
Royal 1 Bedroom	£27899 GBP pp
Midship Veranda	£17649 GBP pp
Grand 1 Bedroom	£31979 GBP pp
Royal 2 Bedroom	£62475 GBP pp
Veranda	£15555 GBP pp
Vista	£13975 GBP pp