



## The Small Cruise Ship Collection

[www.small-cruise-ships.com](http://www.small-cruise-ships.com)

[small-cruise-ships.com](http://small-cruise-ships.com)

[info@small-cruise-ships.com](mailto:info@small-cruise-ships.com)

## NORTHWEST PASSAGE — ACROSS THE TOP OF THE WORLD - ALASKA TO GREENLAND

Sail along the top of the world through the Northwest Passage. Sailing through the Northwest Passage on a state-of-the-art ice-class expedition ship is a captivating journey that blends natural wonders, culture, and history. The passage, once an elusive route for explorers, now offers intrepid travellers a chance to witness breathtaking Arctic landscapes and learn about indigenous communities through first-hand experiences. On this adventure, we'll attempt to traverse the entire route and beyond, going from Nome in Alaska to Nuuk, Greenland. Breathtaking beauty of the High Arctic and Greenland. Our 26-day voyage takes us 'above' the North American continent to the frozen far north. As we head up from Alaska through the famed Beaufort Sea and Bering Strait, we pass into the Western Arctic Canada where we'll explore the western section of the Northwest Passage. From here on in, it's pure expedition as we transit to Eastern Arctic Canada where you'll experience a pristine and remote wilderness featuring surreal vistas of frozen sea ice. We then emerge into Baffin Bay and sail to West Greenland, where you'll encounter natural beauty like nowhere else.



### ITINERARY

DAY 1 Setting out from scenic Seattle



unique and intriguing atmosphere.

Enjoy the city before your expedition cruise begins

The adventure begins in the Emerald City of Seattle, on the Pacific coast of the United States.

Why not arrive early and head to the Seattle Aquarium to see sea otters and a giant Pacific octopus. Or for incredible views of Puget Sound and the surrounding mountains, take a stroll through the nine-acre Olympic Sculpture Park, admiring the work of renowned artists as you go. And for a feast of the senses, visit the famous Pike Place Market. Operating for over a century, this lively farmer's market boasts everything from buskers and bars to salmon-throwing fishmongers!

You'll spend the night here in Seattle before your connecting flight to Alaska tomorrow.

#### DAY 2 There's no place like Nome

Setting off on your adventure

Today you'll take an early flight from Seattle to Nome, Alaska, where your state-of-the art expedition ship awaits to take you on a journey through the famed Northwest Passage and beyond.

Prospectors first came to Nome in 1898, and people still hunt for gold here today. You'll see evidence of the Gold Rush era all around, including abandoned dredges, turn-of-the century steam engines and old railroad tracks, lending the town a

You'll be in good company as you explore the town. Wyatt Earp, the famous sheriff, opened a saloon here. Nome was also the end point of three of Roald Amundsen's great polar expeditions.

Upon boarding the ship and after collecting your complimentary expedition jacket, it's time to check out your cabin, meet the Expedition Team and explore your new home-from-home. Your adventure has truly begun!

#### DAY 3-6 Along the Alaskan coast

Science and wildlife watching at sea

Join your Expedition Team for insightful lectures as we journey through the Beaufort Sea towards Amundsen Gulf, the gates to the Northwest Passage on this eastbound transit. Topics might include subjects such as wildlife, tectonic activity, glaciology and local history which will prepare you for the adventures ahead.

The highlights of this transit include:

The Bering Strait

International Date Line

Sailing Across the Beaufort Sea

Wildlife Watching



#### DAY 7-14 Exploration and adventure

Spend eight days exploring the Western section of the fabled Northwest Passage

Our excursions begin on day seven as we enter the Western Canadian Arctic. Over the next eight days in this section of our voyage we'll transit through three distinct regions - Nunavut, Northwest Territories, and Yukon - and two traditional Inuit Territories - Inuvialuit and Nunavut.

During our time here, we anticipate up to five days of shore excursions and four transit days. Excursion stops and local highlights we hope to be able to visit include:

Herschel Island

Smoking Hills

Ulukhaktok

Coronation Gulf

Cambridge Bay (Iqaluktuuttiaq)

Gjoa Haven (Uqsuqtuuk)

#### DAY 15 Into Bellot Strait

Navigate the dividing line between West and East

The 'Rubicon' of the Canadian Arctic that divides West from East is the infamous Bellot Strait. This narrow body of water separates the northernmost part of mainland North America from Somerset Island, one of the largest islands in the Canadian Arctic archipelago.

Bellot Strait is approximately 15 nautical miles long and just over half a mile wide at its narrowest point. Our ability to navigate this passage will be determined by ice and weather conditions.

#### DAY 16-20 The Eastern Canadian Arctic

Explore the Eastern stretch of the Passage

On the eastern shores of Somerset Island, we find ourselves in the Eastern Canadian Arctic. The main waterway of this area is Lancaster Sound (Tallurutiup Imanga), the eastern gates to the Northwest Passage.

This chapter of our exploration is likely to be action-packed, with excursions planned on each of the five days we hope to spend in and around this area. Remember, all our excursion plans are weather and ice dependent but, conditions permitting, our days will be filled with excitement and discovery.

Excursion stops and local highlights we hope to share with you include:

Fort Ross





of West Greenland.

We will begin by sailing into Disko Bay - a haven for whales and seals. Over the next three days you'll experience some of the most iconic sites in all of Greenland. Our objectives include:

Ilulissat

Nestled at the edge of the magnificent Ilulissat Icefjord, a UNESCO World Heritage Site, is Ilulissat. Here you'll find an ever-changing gallery of passing icebergs set against a backdrop of colourful houses. In town you can visit a multitude of shops selling local crafts, and on the outskirts walking trails take you along the epic icefjord.

Sisimiut

Sisimiut is Greenland's second city, situated in a spectacular location just above the Arctic Circle. This area has history spanning more than 4,500 years, and old traditions are alive and well.

Learn more about ancient Saqqaaq artifacts in the local museum or stretch your legs on a hike. If you're looking for a special souvenir, pick up a scarf, hat or mittens made of qiviut, the inner wool of the musk ox that's said to be 10 times warmer than sheep's wool.

Evighedsfjord

As we head north, we plan to offer an exploration day in the magical and pristine Evighedsfjord near Maniitsoq. We'll

Prince Leopold Island (Appait)

Beechey Island (Iluvilik)

Croker Bay

Dundas Harbour

Pond Inlet (Mittimatalik)

DAY 21 Crossing Baffin Bay

Watch for wildlife and get involved in Citizen Science

Leaving Nunavut behind, our expedition cruise continues to Greenland across Baffin Bay. The Expedition Team will continue their onboard lectures on topics such as the wildlife of the Arctic, Inuit culture and the history of exploration in this region.

Why not take part in one of our Citizen Science projects, helping photograph and track whales, or observing the clouds to help scientists study our climate by contributing to the GLOBE Program.

DAY 22-24 The Wonders of West Greenland

Discover the magical beauty of Greenland

The final chapter of our journey encompasses the majestic coast



determine on the day what adventures we can take part in.

The 'Fjord of Eternity' is fed by an ice cap that calves huge icebergs into its 2,300 ft deep waters. It's surrounded by mist-cloaked mountains with beautiful white ridges, punctuated by crystal blue ice caves.

#### DAY 25 Old and new in Nuuk

End your voyage in colourful Nuuk

Today we arrive in Nuuk, Greenland's colourful capital. It has a population of 18,000, and boasts a striking mix of old and new buildings.

We'll explore this fascinating city, comparing the old buildings - such as Hans Egede House and Nuuk Cathedral - with the ultra-modern architecture of the Parliament of Greenland.

Your voyage ends with a flight from Nuuk to Reykjavik, and an overnight stay.

#### DAY 26 Cosmopolitan Reykjavík

Discover Iceland's modern capital

Enjoy breakfast at the hotel and discover the city before connecting to your onwards flight home.

Packed full of art, culture and history, Iceland's capital is a delight to explore. Visit Laugavegur, the main shopping street,

and head towards the striking Hallgrímskirkja church. Or why not explore the many galleries and museums dotted around the city.

If you have the time, we recommend booking a Post-Programme with us and discovering some of Iceland's natural highlights.

#### Please Note:

Our Attempts are voyages where we challenge the elements in true expedition style. As we explore these remote and captivating areas in a safe way, our adventure will ultimately be guided by nature. If weather, sea or ice conditions do not allow our planned navigation, our experienced crew will deliver an adapted itinerary. Flexibility and our deep knowledge of the area combine to give you an amazing exploration experience.





# The Small Cruise Ship Collection

www.small-cruise-ships.com

small-cruise-ships.com

info@small-cruise-ships.com

## YOUR SHIP: ROALD AMUNDSEN

**YOUR SHIP:** Roald Amundsen

**VESSEL TYPE:**

**LENGTH:**

**PASSENGER CAPACITY:**

**BUILT/REFURBISHED:**

Launched in 2019, The state of the art vessel features new and environmentally sustainable hybrid technology that will reduce fuel consumption and show the world that hybrid propulsion on large ships is possible. MS Roald Amundsen is the first of two hybrid ships to be launched cutting emissions by sailing with electrical propulsion. Hybrid technology, combined with the advanced construction of the hull and effective use of electricity on board will reduce fuel consumption and CO2-emissions on the ships by 20 percent. The future of shipping will be silent and emission free. MS Roald Amundsen will lead the way towards an even more sustainable way of traveling. Sailing on electrical power is not only a great benefit for the environment, but it will also enhance the impact of experiencing nature for the guests. The ship will be specially constructed for voyages in polar waters and serve as a comfortable basecamp at sea - bringing adventurers from all over the world to the most spectacular destinations in the most sustainable way. These ships combine state-of-the-art technology together with a premium onboard experience. All cabins are outside, half have private balconies, and aft suites even boast private outdoor Jacuzzis, to soak up the stunning scenery in style. Facilities on board One of the

most eye-catching exterior design features of the ships will be the two-level indoor/outdoor Observation Deck wrapped around the top of the ships' raked bow. In a vast area behind it, you'll find the core of the onboard experience: Amundsen Science Center. Packed with state of the art technology and high tech gadgets such as touch screens and science equipment, the immersive edutainment area will be the place guests and staff/crew meet, mingle and create a deeper understanding for the areas they explore. The flexible venue will feature lecture spaces, a small library, and speciality areas for workshops in photography, biology, and more. The stunning scenery will be reflected in a rich and comfortable interior design. Scandinavian materials from nature, such as granite, oak, birch and wool will be used to create relaxed and stylish cabins and public areas. All cabins are outside, 50 % will have private balconies, aft suites will feature private outdoor Jacuzzis with



spectacular views.



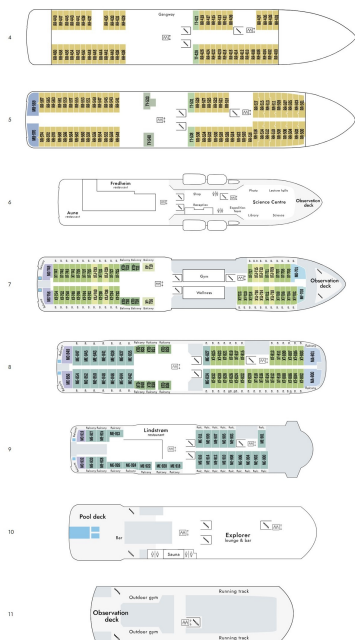
The Small Cruise  
Ship Collection

[www.small-cruise-ships.com](http://www.small-cruise-ships.com)

[small-cruise-ships.com](http://small-cruise-ships.com)

[info@small-cruise-ships.com](mailto:info@small-cruise-ships.com)

## INSIDE YOUR SHIP



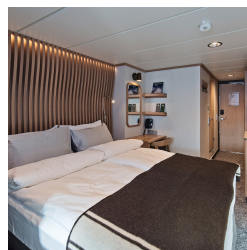
Arctic Superior. From



Expedition Suite. From



Polar Outside. From



The Small Cruise  
Ship Collection

[www.small-cruise-ships.com](http://www.small-cruise-ships.com)

01432 507 280 (within UK)

[info@small-cruise-ships.com](mailto:info@small-cruise-ships.com) | [small-cruise-ships.com](http://small-cruise-ships.com)





The Small Cruise  
Ship Collection

[www.small-cruise-ships.com](http://www.small-cruise-ships.com)

[small-cruise-ships.com](http://small-cruise-ships.com)

[info@small-cruise-ships.com](mailto:info@small-cruise-ships.com)

## PRICING

### 08-Aug-2025 to 02-Sep-2025

Polar Outside. From	£16751 GBP pp
Expedition Suite. From	£22757 GBP pp
Arctic Superior. From	£18324 GBP pp

### 10-Aug-2026 to 04-Sep-2026

Arctic Superior. From	£22345 GBP pp
Polar Outside. From	£20395 GBP pp
Expedition Suite. From	£27855 GBP pp



The Small Cruise  
Ship Collection

[www.small-cruise-ships.com](http://www.small-cruise-ships.com)

01432 507 280 (within UK)

[info@small-cruise-ships.com](mailto:info@small-cruise-ships.com) | [small-cruise-ships.com](http://small-cruise-ships.com)