



The Small Cruise
Ship Collection

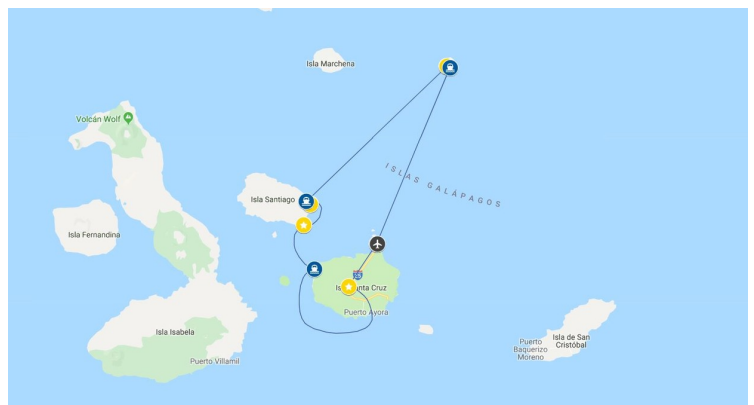
www.small-cruise-ships.com

small-cruise-ships.com

info@small-cruise-ships.com

NORTHERN GALÁPAGOS (LA PINTA)

Our itinerary together begins on Santa Cruz Island, the most populous of all the archipelago, where we meet giant tortoises in the wild and then venture to Eden Islet. From there, we hop over the lovely crescent bay of Chinese Hat. On Wednesday, one of the icon sites of the archipelago awaits: Bartolomé Island, with its wooden walkway up to a panoramic viewpoint, golden sandy beach and great snorkelling opportunities. Close-by, Sullivan Bay gives us a great introduction to the volcanic origins of the Islands. We end with an exciting visit to the sunken caldera of Genovesa, far up in the east of the archipelago, a privileged place to visit amid thousands of marine birds. All the crew aboard La Pinta will do our utmost to ensure your Galápagos experience is truly, deeply moving and memorable. Please Note: During Peak Season (Dec 21 - 29 & Dec 29 - Jan 04) a surcharge applies.



ITINERARY

Day 1 - Monday - Highlands (Santa Cruz Island)

Following our morning arrival at Baltra Airport (additional charge), we transfer to the Itabaca Channel, taking a small ferry across the Channel to the north shore of Santa Cruz Island. We board our bus to the highlands of Santa Cruz Island, where we'll learn about the unique montane ecosystems and biodiversity. Lunch is served at a local restaurant. Note: please dress with comfortable shoes and clothes, bring a small backpack with any medicine you might be taken, sunblock, insect repellent and anything you need during the excursion as you will go onboard Yacht La Pinta and the end of the day. After lunch, we travel by bus to El Chato Reserve, one of the best places in the archipelago to see giant tortoises in their natural habitat. The tortoises are easy to spot, lumbering around, eating grass and leaves and wallowing in the small pools. There are several lava tunnels in the reserve, too. A short bus ride takes us down to Puerto Ayora to board Yacht La Pinta.



The Small Cruise
Ship Collection

www.small-cruise-ships.com

01432 507 280 (within UK)

info@small-cruise-ships.com | small-cruise-ships.com



The Small Cruise Ship Collection

www.small-cruise-ships.com

small-cruise-ships.com

info@small-cruise-ships.com

Day 2 - Tuesday - Eden Islet (Santa Cruz Island) and Sombrero Chino Islet

After breakfast, a panga ride takes us to Eden Islet, located off the coast of Santa Cruz, where we can observe blue footed boobies diving into the water, reef sharks and frigates. There's a chance to snorkel and, if weather condition permits, ride in the glass-bottom boat. The tiny island of Sombrero Chino gets its name from its appearance: a Chinese hat. This islet, only formed fairly recently, makes a beautiful visit as one explores the wildlife along its 400-metre long trail, which begins at a crescent-shaped white sandy beach. The cove offers excellent swimming and snorkeling opportunities with white-tipped reef sharks and Galápagos penguins.

Day 3 - Wednesday - Bartolomé Island and Sullivan Bay (James Island)

This morning, a Galápagos icon awaits: Bartolomé Island. A great way to start the day, with a steep climb up a wooden staircase: the view from the top is worth the effort! Following the walk, we take to the dinghies for a ride around colossal Pinnacle Rock, followed by time to enjoy the beach and some snorkelling. We can also ride in the glass-bottom boat for great views of the underwater world. After lunch, we board the pangas to land at Sullivan Bay on the east coast of Santiago, a white coral sand beach great for swimming and snorkelling, and with a trail over a lava field that flowed here less than 100 years ago. This is the perfect place to see and feel the volcanic origin of Galápagos while observing its wildlife.

Day 4 - Thursday - Darwin Bay and Prince Philip's Steps (Genovesa Island)

In the morning, we begin our exploration of this island with an easy stroll to observe marine and land birds. There is an optional walk over sharp lava and uneven terrain for dramatic views, or else we can return to the beach to enjoy swimming and snorkelling at this beautiful natural harbour. The more

adventurous can snorkel along the cliffs or paddle sea kayaks. The afternoon starts with a very interesting panga ride along the cliffs before we disembark for a steep climb up some stairs. Once at the top of the stairs, the land is flat, allowing for a captivating walk of about a mile to the other side of this small island, observing large colonies of Nazca boobies, frigate birds and storm petrels and the elusive short eared owl.

Day 5 - Friday - Baltra Island

Our journey ends at Baltra Island where we transfer to the airport (additional charge) to take the flight back to the mainland.

Please Note:

Galápagos Itineraries are subject to change due to weather, logistical, Galápagos Park regulations or operational reasons.



The Small Cruise Ship Collection

www.small-cruise-ships.com

01432 507 280 (within UK)

info@small-cruise-ships.com | small-cruise-ships.com



The Small Cruise Ship Collection

www.small-cruise-ships.com



small-cruise-ships.com

info@small-cruise-ships.com

YOUR SHIP: LA PINTA

YOUR SHIP:	La Pinta
VESSEL TYPE:	Small Ship
LENGTH:	63 metres
PASSENGER CAPACITY:	48 (in 24 cabins)
BUILT/REFURBISHED:	1983 / refurbished 2007



After intense days of wildlife exploration, yacht La Pinta provides a haven of relaxation and tranquility with tastefully appointed accommodations and all the facilities for a stylish yet informal ambiance. A full week discovery trip to the Galapagos Islands aboard La Pinta allows encounters with unique fauna, like the famous giant Galapagos tortoises in the wild, land and marine iguanas, flamingos, penguins, blue-footed boobies and the famous Darwin's finches. La Pinta guests will cover all aspects of the Galapagos: discovery, adventure, environmental interpretation, aquatic activities, relaxation, superb service and great dining. Naturalist Guides enhance their interpretative skills with the use of state-of-the-art-expedition equipment. Our staff embraces a spirit of adventure, while at the same time ensures that you always travel in comfort and safety.



The Small Cruise Ship Collection

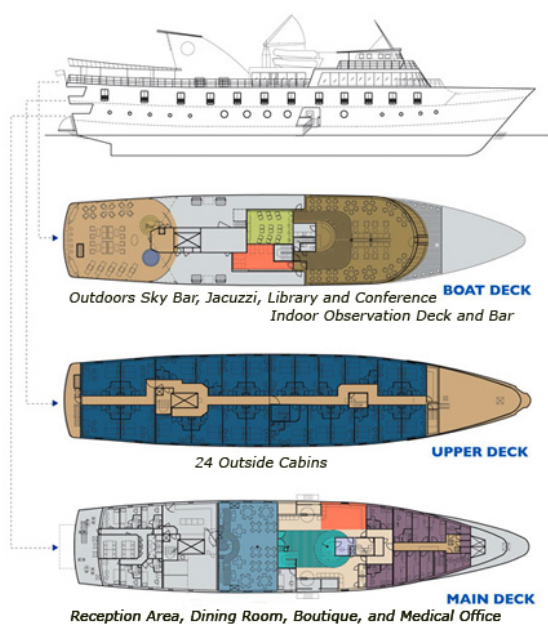
www.small-cruise-ships.com



small-cruise-ships.com

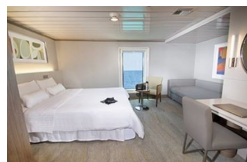
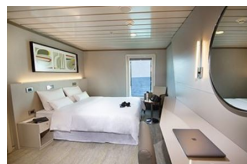
info@small-cruise-ships.com

INSIDE YOUR SHIP



Luxury Cabin/Captain Cabin

Luxury Plus Cabin/Admiral Cabin





The Small Cruise Ship Collection

www.small-cruise-ships.com

small-cruise-ships.com

info@small-cruise-ships.com

PRICING

06-May-2024 to 10-May-2024

Luxury Cabin/Captain Cabin	£4591 GBP pp
Luxury Plus Cabin/Admiral Cabin	£4591 GBP pp

10-May-2024 to 14-May-2024

Luxury Cabin/Captain Cabin	£4591 GBP pp
Luxury Plus Cabin/Admiral Cabin	£4591 GBP pp

20-May-2024 to 24-May-2024

Luxury Cabin/Captain Cabin	£4591 GBP pp
Luxury Plus Cabin/Admiral Cabin	£4591 GBP pp

24-May-2024 to 28-May-2024

Luxury Cabin/Captain Cabin	£4591 GBP pp
Luxury Plus Cabin/Admiral Cabin	£4591 GBP pp

03-Jun-2024 to 07-Jun-2024

Luxury Cabin/Captain Cabin	£4591 GBP pp
Luxury Plus Cabin/Admiral Cabin	£4591 GBP pp

07-Jun-2024 to 11-Jun-2024

Luxury Cabin/Captain Cabin	£4591 GBP pp
Luxury Plus Cabin/Admiral Cabin	£4591 GBP pp

17-Jun-2024 to 21-Jun-2024

Luxury Cabin/Captain Cabin	£4591 GBP pp
Luxury Plus Cabin/Admiral Cabin	£4591 GBP pp

21-Jun-2024 to 25-Jun-2024

Luxury Plus Cabin/Admiral Cabin	£4591 GBP pp
Luxury Cabin/Captain Cabin	£4591 GBP pp

01-Jul-2024 to 05-Jul-2024

Luxury Cabin/Captain Cabin	£4591 GBP pp
Luxury Plus Cabin/Admiral Cabin	£4591 GBP pp

05-Jul-2024 to 09-Jul-2024

Luxury Cabin/Captain Cabin	£4591 GBP pp
Luxury Plus Cabin/Admiral Cabin	£4591 GBP pp

15-Jul-2024 to 19-Jul-2024

Luxury Plus Cabin/Admiral Cabin	£4591 GBP pp
Luxury Cabin/Captain Cabin	£4591 GBP pp

19-Jul-2024 to 23-Jul-2024

Luxury Cabin/Captain Cabin	£4591 GBP pp
Luxury Plus Cabin/Admiral Cabin	£4591 GBP pp

29-Jul-2024 to 02-Aug-2024



The Small Cruise Ship Collection

www.small-cruise-ships.com

small-cruise-ships.com

info@small-cruise-ships.com

Luxury Plus Cabin/Admiral Cabin

£4591 GBP pp

Luxury Cabin/Captain Cabin

£4591 GBP pp

02-Aug-2024 to 06-Aug-2024

Luxury Cabin/Captain Cabin

£4591 GBP pp

Luxury Plus Cabin/Admiral Cabin

£4591 GBP pp

12-Aug-2024 to 16-Aug-2024

Luxury Cabin/Captain Cabin

£4591 GBP pp

Luxury Plus Cabin/Admiral Cabin

£4591 GBP pp

16-Aug-2024 to 20-Aug-2024

Luxury Cabin/Captain Cabin

£4591 GBP pp

Luxury Plus Cabin/Admiral Cabin

£4591 GBP pp

30-Aug-2024 to 03-Sep-2024

Luxury Cabin/Captain Cabin

£4591 GBP pp

Luxury Plus Cabin/Admiral Cabin

£4591 GBP pp

09-Sep-2024 to 13-Sep-2024

Luxury Cabin/Captain Cabin

£4591 GBP pp

Luxury Plus Cabin/Admiral Cabin

£4591 GBP pp



The Small Cruise Ship Collection

www.small-cruise-ships.com

01432 507 280 (within UK)

info@small-cruise-ships.com | small-cruise-ships.com



The Small Cruise Ship Collection

www.small-cruise-ships.com

small-cruise-ships.com

info@small-cruise-ships.com

PRICING

13-Sep-2024 to 17-Sep-2024

Luxury Cabin/Captain Cabin	£4591 GBP pp
Luxury Plus Cabin/Admiral Cabin	£4591 GBP pp

23-Sep-2024 to 27-Sep-2024

Luxury Cabin/Captain Cabin	£4591 GBP pp
Luxury Plus Cabin/Admiral Cabin	£4591 GBP pp

26-Sep-2024 to 30-Sep-2024

Luxury Cabin/Captain Cabin	£4591 GBP pp
Luxury Plus Cabin/Admiral Cabin	£4591 GBP pp

27-Sep-2024 to 01-Oct-2024

Luxury Plus Cabin/Admiral Cabin	£4591 GBP pp
Luxury Cabin/Captain Cabin	£4591 GBP pp

07-Oct-2024 to 11-Oct-2024

Luxury Plus Cabin/Admiral Cabin	£4591 GBP pp
Luxury Cabin/Captain Cabin	£4591 GBP pp

11-Oct-2024 to 15-Oct-2024

Luxury Plus Cabin/Admiral Cabin	£4591 GBP pp
Luxury Cabin/Captain Cabin	£4591 GBP pp

21-Oct-2024 to 25-Oct-2024

Luxury Cabin/Captain Cabin	£4591 GBP pp
Luxury Plus Cabin/Admiral Cabin	£4591 GBP pp

25-Oct-2024 to 29-Oct-2024

Luxury Plus Cabin/Admiral Cabin	£4591 GBP pp
Luxury Cabin/Captain Cabin	£4591 GBP pp

04-Nov-2024 to 08-Nov-2024

Luxury Plus Cabin/Admiral Cabin	£4591 GBP pp
Luxury Cabin/Captain Cabin	£4591 GBP pp

08-Nov-2024 to 12-Nov-2024

Luxury Plus Cabin/Admiral Cabin	£4591 GBP pp
Luxury Cabin/Captain Cabin	£4591 GBP pp

18-Nov-2024 to 22-Nov-2024

Luxury Cabin/Captain Cabin	£4591 GBP pp
Luxury Plus Cabin/Admiral Cabin	£4591 GBP pp

22-Nov-2024 to 26-Nov-2024

Luxury Cabin/Captain Cabin	£4591 GBP pp
Luxury Plus Cabin/Admiral Cabin	£4591 GBP pp

02-Dec-2024 to 06-Dec-2024



The Small Cruise Ship Collection

www.small-cruise-ships.com



small-cruise-ships.com

info@small-cruise-ships.com

Luxury Plus Cabin/Admiral Cabin	£4591 GBP pp
---------------------------------	--------------

Luxury Cabin/Captain Cabin	£4591 GBP pp
----------------------------	--------------

03-Dec-2024 to 07-Dec-2024

Luxury Cabin/Captain Cabin	£4591 GBP pp
----------------------------	--------------

Luxury Plus Cabin/Admiral Cabin	£4591 GBP pp
---------------------------------	--------------

06-Dec-2024 to 10-Dec-2024

Luxury Cabin/Captain Cabin	£4591 GBP pp
----------------------------	--------------

Luxury Plus Cabin/Admiral Cabin	£4591 GBP pp
---------------------------------	--------------

16-Dec-2024 to 20-Dec-2024

Luxury Plus Cabin/Admiral Cabin	£4591 GBP pp
---------------------------------	--------------

Luxury Cabin/Captain Cabin	£4591 GBP pp
----------------------------	--------------

20-Dec-2024 to 24-Dec-2024

Luxury Cabin/Captain Cabin	£4591 GBP pp
----------------------------	--------------

Luxury Plus Cabin/Admiral Cabin	£4591 GBP pp
---------------------------------	--------------

30-Dec-2024 to 03-Jan-2025

Luxury Plus Cabin/Admiral Cabin	£4591 GBP pp
---------------------------------	--------------

Luxury Cabin/Captain Cabin	£4591 GBP pp
----------------------------	--------------

Galapagos National Park
admission fee and transit Control
Card for Galapagos 120 USD pp

ADDITIONAL CHARGES:



The Small Cruise Ship Collection

www.small-cruise-ships.com

01432 507 280 (within UK)

info@small-cruise-ships.com | small-cruise-ships.com