

## The Small Cruise Ship Collection

www.small-cruise-ships.com

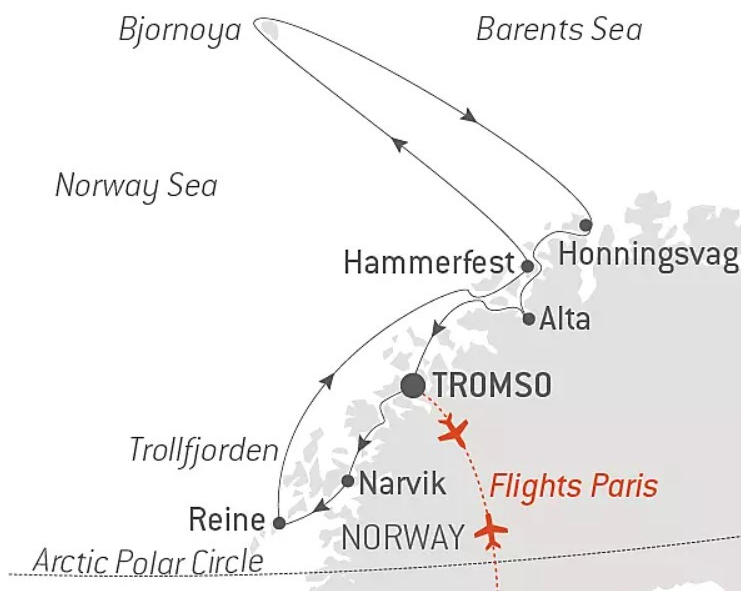
small-cruise-ships.com

info@small-cruise-ships.com

## NORTH NORWAY AND THE NORTHERN LIGHTS IN SPRING

Set off aboard Le Bellot for a brand-new 11-day cruise and enjoy an exceptional experience exploring Norway in the winter. From Tromsø, you will sail towards these magical lands, where your exceptional itinerary will take in snow-capped summits, immaculate landscapes and the discovery of millennial traditions. The beginning of this trip beyond the Arctic Circle will be marked by an immersion in the land of the Sami. From your disembarkation in Narvik, in the very heart of captivating summits plunging into the sumptuous Ofotfjord, you will be invited to explore the ancestral tales of this reindeer-herding indigenous people. Your ship will then make its way south where you will witness the mysterious charm of the Lofoten archipelago. These islands have landscapes of surreal beauty alternating between sea, spectacular fjords, mountain slopes and bright-coloured huts on stilts. After an unforgettable cruise through the magical Trollfjorden, a sound separating the two archipelagos in the north of the country, Le Bellot will set sail for Hammerfest, the northernmost town in the world. During your port of call in this charming fishing port, you will have the opportunity to explore the Struve Geodetic Arc, a chain of triangulations stretching from Norway to the Black Sea, and the first technical and scientific tool to become a UNESCO World Heritage Site. You will also sail by Bear Island, halfway between the North Cape of Norway and the South Cape of Spitsbergen. From your ship, you will marvel at this small strip of land with its craggy coastline and high jagged cliffs. Le Bellot will once again set sail south, for the captivating Honningsvåg. This port of call will take you to the northernmost point of Europe: the North Cape. On this cliff, home to the emblematic Milestone, a

globe-shaped monument, allow yourself the time to dream as you gaze upon the vastness of the Barents Sea. You will then discover Alta. With the polar night in full swing, you may be lucky enough to admire the unique colours of the Northern Lights as they ripple and spin above the Arctic Circle. Your trip into the very heart of the immenseness of the Norwegian Arctic polar world will end in Tromsø, your



disembarkation port.

### ITINERARY

Day 1 TROMSØ

The Small Cruise Ship Collection  
www.small-cruise-ships.com

01432 507 280 (within UK)

info@small-cruise-ships.com | small-cruise-ships.com



## The Small Cruise Ship Collection

[www.small-cruise-ships.com](http://www.small-cruise-ships.com)



[small-cruise-ships.com](http://small-cruise-ships.com)

[info@small-cruise-ships.com](mailto:info@small-cruise-ships.com)

In the north of the Arctic circle you'll discover Tromsø, a secluded town located in the county of Troms. Norwegians call it the "Paris of the north". You'll soon see why when you discover its extensive neoclassical architectural heritage. A stunning example is the Arctic cathedral, a major monument whose stylistic purity echoes the outline of the mountains surrounding the town.

### Day 2 NARVIK

Beyond the Arctic Circle, you will discover Narvik, nestling in the heart of impressive mountains that plunge into the Ofotfjord. It is on the verge of obtaining the "sustainable destination" label, a national label awarded to destinations that are committed to a sustainable approach to tourism for the long term. You will be mesmerised by its scenery. From Narvik, it is possible to take the Ofoten Line towards Sweden. This historic railway once linked the mineral-rich mines of Kiruna in Sweden to the ice-free port of Narvik. You will experience unique moments whether meeting the Sami people reindeer herders who have ancestral traditions and yet embrace modernity.

### Day 3 REINE, LOFOTEN

Way beyond the Arctic Circle, Lofoten Islands are truly considered to be in "another world". A jewel of nature in its most pristine state, this archipelago with its jagged coastline offers you majestic settings of high alpine summits, sandy beaches, green prairies and fjords of a deep blue, where countless bird colonies make their nests. Whether you visit Å, or Nusfjord,

listed by UNESCO, enjoy authentic and memorable moments.

### Day 4 SAILING IN TROLLFJORDEN

According to legend, trolls were the guardians of this 2-km long fjord accessible via the Raftsund Strait, between the Vesterålen Archipelago and the Lofoten Islands. Dominated on both sides by vertical rock faces that stand up to 1,000 metres high in parts, Trollfjorden welcomes you in a magical atmosphere which its narrowness helps to create. During this unforgettable journey, you will indeed have the impression that you're grazing the surrounding mountains and that you'll never see the end of this marine cul-de-sac. After a delicate U-turn, your ship will finally head back in the opposite direction: this will perhaps be the opportunity to observe, for want of trolls, seals and eagles, which are often present in this site, unique on earth.

### Day 5 HAMMERFEST

Hammerfest, located on the north-western coast of the island of Kvaløya, beyond the 70th parallel north, is often considered the northernmost town in the world. Conserved in an immaculate natural setting, this charming fishing port enjoys a rich history, as is evidenced by various vestiges dating back to the Stone Age, Napoleonic wars or the Second World War. During your port of call, you will have the opportunity to discover the Struve Geodetic Arc, a chain of triangulations stretching across Europe from Hammerfest to the Black Sea, and the first technical and scientific object to become a UNESCO World Heritage Site.

### Day 6 SAILING BY BJORNOYA (BEAR ISLAND)



The Small Cruise Ship Collection

[www.small-cruise-ships.com](http://www.small-cruise-ships.com)

**01432 507 280** (within UK)

[info@small-cruise-ships.com](mailto:info@small-cruise-ships.com) | [small-cruise-ships.com](http://small-cruise-ships.com)





## The Small Cruise Ship Collection

[www.small-cruise-ships.com](http://www.small-cruise-ships.com)



[small-cruise-ships.com](http://small-cruise-ships.com)

[info@small-cruise-ships.com](mailto:info@small-cruise-ships.com)

### Days 8 - 9 ALTA

Halfway between Norway and Spitsbergen, you will sail not far from the coastlines of Bjørnøya, the southernmost island of Svalbard. From your ship, observe this isolated piece of land discovered in 1596 by the Dutch navigator Willem Barents, then looking for the Northwest Passage. Following a tough fight between a polar bear and the members of the expedition, he dubbed the place Bear Island. Regularly covered by a thick layer of fog, Bjørnøya shelters a meteorological station built in 1923, which is still in operation. Declared a nature reserve in 2002, the island is above all home to an enormous colony of sea birds: skuas, guillemots, puffins, Tridactyl gulls, petrels, gulls and little auks all coexist here.

Beyond the Arctic Circle, Alta, in the far north of Norway, is the biggest city in Finnmark county. Alta will reveal itself to you at the end of the eponymous fjord, Altafjorden. The region offers a mix of forest, mountainous and coastal landscapes. It is on the verge of obtaining the "sustainable destination" label, a national label awarded to destinations that are committed to a sustainable approach to tourism for the long term. Alta invites you to experience unique moments, whether meeting the Sami people reindeer herders who have ancestral traditions and yet embrace modernity or during walks, snowshoe hikes or dog sledding, depending on the season.

### Days 10 - 11 TROMSØ

If you feel like you have arrived at the end of the world in Honningsvåg, it is because this is the case. Halfway between Oslo and the North Pole, it competes with Hammerfest for the status of "the northernmost town in Continental Europe". Colourful houses light up this charming and typically Norwegian fishing port nestled in the hollows of the region's mountainous terrain. Travellers come to stay in the village to go to the North Cape. At the end of the road, you will see the globe that indicates that you are at the very end of Europe. At this point, only the Svalbard archipelago separates you from the North Pole. There is sea as far as the eye can see. The Northern Lights, the view of the immense cliff plunging into the sea, the thousands of puffins, gannets and cormorants that spin around you: everything here is grandiose.

In the north of the Arctic circle you'll discover Tromsø, a secluded town located in the county of Troms. Norwegians call it the "Paris of the north". You'll soon see why when you discover its extensive neoclassical architectural heritage. A stunning example is the Arctic cathedral, a major monument whose stylistic purity echoes the outline of the mountains surrounding the town.

Please Note:

Itineraries are subject to change.



The Small Cruise Ship Collection

[www.small-cruise-ships.com](http://www.small-cruise-ships.com)

01432 507 280 (within UK)

[info@small-cruise-ships.com](mailto:info@small-cruise-ships.com) | [small-cruise-ships.com](http://small-cruise-ships.com)



# The Small Cruise Ship Collection

[www.small-cruise-ships.com](http://www.small-cruise-ships.com)



[small-cruise-ships.com](http://small-cruise-ships.com)

[info@small-cruise-ships.com](mailto:info@small-cruise-ships.com)

## YOUR SHIP: LE BELLOT

**YOUR SHIP:**

**Le Bellot**

**VESSEL TYPE:**

**LENGTH:**

**PASSENGER CAPACITY:**

**BUILT/REFURBISHED:**

Featuring innovative and environmentally-friendly equipment, elegantly designed staterooms, spacious suites with large windows, and lounge areas that open onto the outside, this new limited-capacity yacht boasting just 92 staterooms and suites will offer you a truly unique cruising experience. As the first ship in a new series, Le Bellot will embody the unique atmosphere of a subtle blend of exploration, refinement, intimacy and comfort. Aboard this ship that flies the French flag, you will experience the incomparable pleasure of an intimate cruise, with the possibility of exploring an ever-increasing range of destinations in an ethnic-chic ambiance with luxury service. Experience a luxurious setting where the accent is on authenticity and passion for travel. **RESTAURANTS** As it is an essential part of French culture, gastronomy will naturally have pride of place aboard this new ship. To the back of Deck 4, you will find a 260 m<sup>2</sup> panoramic restaurant which can accommodate all of our passengers in a single sitting. Designed differently to that on our other ships, this dining area, which opens onto the outside, will have a buffet of salads, desserts and cheeses at your disposal. Our discreet and attentive crew will provide table service for hot meals. In a relaxed atmosphere, an outdoor grill on Deck 3 will

serve grilled meats with a variety of salads and desserts. **PUBLIC AREAS** Le Bellot has many common areas that are designed and equipped to meet all of your needs while preserving the intimacy of each passenger. A 140 m<sup>2</sup> reception area includes: A reception/concierge desk, An excursions desk, The ship's administrative services, The sales office, manned by our Guest Relations Officer, Our 50 m<sup>2</sup> boutique which sells clothing, jewellery, beauty products, postcards and various accessories, Toilets accessible to passengers with reduced mobility. A new hydraulic platform with adjustable height provides: Easier boarding than on any other cruise ship, Easier Zodiac embarkation and disembarkation for expeditions, Easier access to the sea for swimming and practising various water sports such as kayaking or paddle-boarding. A pool deck offering: A pool with a panoramic view, equipped with a counter-current swimming system, A pleasant solarium, An outdoor bar and lounge with armchairs and sofas. A 200 m<sup>2</sup> main lounge which can accommodate all of our passengers to share convivial moments and to host activities organised during the day or evening. Lastly, a theatre that seats 188, equipped with: The latest sound and lighting technology, A LED wall as the stage backdrop, for the projection of high-resolution images and videos. Please click the following links to read more about Ponant and the other Ponant



The Small Cruise Ship Collection

[www.small-cruise-ships.com](http://www.small-cruise-ships.com)

**01432 507 280** (within UK)

[info@small-cruise-ships.com](mailto:info@small-cruise-ships.com) | [small-cruise-ships.com](http://small-cruise-ships.com)





## The Small Cruise Ship Collection

[www.small-cruise-ships.com](http://www.small-cruise-ships.com)



[small-cruise-ships.com](http://small-cruise-ships.com)

[info@small-cruise-ships.com](mailto:info@small-cruise-ships.com)



cruise ships.



The Small Cruise Ship Collection

[www.small-cruise-ships.com](http://www.small-cruise-ships.com)

**01432 507 280** (within UK)

[info@small-cruise-ships.com](mailto:info@small-cruise-ships.com) | [small-cruise-ships.com](http://small-cruise-ships.com)



# The Small Cruise Ship Collection

[www.small-cruise-ships.com](http://www.small-cruise-ships.com)



[small-cruise-ships.com](http://small-cruise-ships.com)

[info@small-cruise-ships.com](mailto:info@small-cruise-ships.com)

## INSIDE YOUR SHIP



The Small Cruise Ship Collection

[www.small-cruise-ships.com](http://www.small-cruise-ships.com)

01432 507 280 (within UK)

[info@small-cruise-ships.com](mailto:info@small-cruise-ships.com) | [small-cruise-ships.com](http://small-cruise-ships.com)



## The Small Cruise Ship Collection

[www.small-cruise-ships.com](http://www.small-cruise-ships.com)



[small-cruise-ships.com](http://small-cruise-ships.com)

[info@small-cruise-ships.com](mailto:info@small-cruise-ships.com)

## PRICING

---

### ADDITIONAL CHARGES:

Port Taxes & Fees 440 GBP pp



The Small Cruise Ship Collection

[www.small-cruise-ships.com](http://www.small-cruise-ships.com)

**01432 507 280** (within UK)

[info@small-cruise-ships.com](mailto:info@small-cruise-ships.com) | [small-cruise-ships.com](http://small-cruise-ships.com)