

The Small Cruise Ship Collection

www.small-cruise-ships.com

small-cruise-ships.com

info@small-cruise-ships.com

MALTA, ITALIAN SHORES AND ISLE OF BEAUTY WITH PONANT

From the splendid Maltese capital to the pearl of the French Riviera, set sail on a brand-new 11-day cruise in the Mediterranean Sea. Aboard Le Bougainville, discover the Isle of Beauty, the Italian shores and Malta during an unforgettable trip. From Valletta, you will head for Gozo, an unspoiled island that is home to a megalithic site listed with UNESCO. On foot, kayak or bike, explore the island and its spectacular scenery, from the endless turquoise sea to the dreamlike decor of the salt marshes. Do not miss your chance to taste the local wines. You will then arrive on Malta's smallest island, the idyllic Comino, whose blue lagoon, renowned for its turquoise waters, rivals the finest beaches of the Seychelles! A little further north, you will discover the Aeolian islands. Lipari is the capital of the Aeolian volcanic archipelago and is renowned for its many natural and architectural gems. Your ship will stop at Porto Ercole, a charming Tuscan village with colourful houses, on the Monte Argentario peninsula. Here, you will have the possibility of meeting fisherman from the Orbetello Lagoon as well as local producers. The peninsula's rolling and lush landscapes will also provide you with opportunities for magnificent outings. After a port of call on the Tuscan island of Giglio, you will visit Portofino. Built in a natural harbour protected by a pine forest, it is a picturesque and lively port that has successfully retained its authenticity and traditions. You will finally set sail for Calvi in the heart of the Balagne region. Between steep peaks and sublime beaches with turquoise waters, you will experience a wild and authentic Corsica. Your cruise will end in Nice, capital of the French Riviera.



ITINERARY

Days 1 - 2 VALLETTA & MGARR, GOZO ISLAND

The whole of the Maltese capital Valletta is UNESCO World Heritage listed and occupies a peninsula in the north-east of the island. From the fountain of Tritons to Saint-Elme fort, there are as many majestic streets as there are narrow staircase vennels to explore. The painted loggia and carved corbels on the tall houses will accompany you in your explorations, and you'll rarely be bothered by traffic. You can visit the Grandmasters palace decorated with coats of arms and frescoes. Saint-John's cathedral and the ramparts which have guarded the city since

The Small Cruise Ship Collection
www.small-cruise-ships.com

01432 507 280 (within UK)

info@small-cruise-ships.com | small-cruise-ships.com



The Small Cruise Ship Collection

www.small-cruise-ships.com

small-cruise-ships.com

info@small-cruise-ships.com

the 16th century are also among the most emblematic sites of the city. Arranged in terraces, the Barrakka Gardens will punctuate your promenade with a green and floral experience.

Day 3 MGARR, GOZO ISLAND

Located to the north of Malta, a lot less urbanised than its larger sibling and protected from mass tourism, the small island of Gozo has managed to remain natural and authentic. Lush hills and valleys alternate with a mosaic of cultivated fields. The buildings, some of which are medieval, are built from honey-coloured limestone and blend in perfectly with the surrounding scenery. Gozo also boasts a unique historic site that is now listed as a UNESCO World Heritage Site: the megalithic temples of Ggantija near the town of Xaghra. An archaeological museum adjoining the site presents a number of objects that were found there. Red-sand beaches and a crystal-clear sea add to the calm and serenity of Gozo.

Day 4 COMINO

Day 5 SAILING IN FRONT OF STROMBOLI & LIPARI, AEOLIAN ISLANDS

Like Ulysses during his Odyssey, you will have the opportunity to admire the Stromboli, the capricious volcano that looms over the Aeolian Islands. Its activity, uninterrupted for thousands of years, has earned it the nickname the “Lighthouse of the Mediterranean”. Of the seven Aeolian islands, this is the largest and the most populated. Lying off the north coast of Sicily, in the Tyrrhenian sea, Lipari is one of UNESCO’s marvellous World Heritage sites. Its lava stone quarries and obsidian flow of Rocce Rosse are indications of its volcanic nature. The town, the largest urban area in the whole archipelago, proudly houses its citadel and its castle, both rooted in Antiquity. If you head further into the centre, you’ll be surprised to come across a

Norman cathedral, complete with a magnificent baroque façade.

Day 6 AT SEA

During your day at sea, make the most of the many services and activities on board. Treat yourself to a moment of relaxation in the spa or stay in shape in the fitness centre. Depending on the season, let yourself be tempted by the swimming pool or a spot of sunbathing. This day without a port of call will also be an opportunity to enjoy the conferences or shows proposed on board, to do some shopping in the boutique or to meet the PONANT photographers in their dedicated space. As for lovers of the open sea, they will be able to visit the ship’s upper deck to admire the spectacle of the waves and perhaps be lucky enough to observe marine species. A truly enchanted interlude, combining comfort, rest and entertainment.

Day 7 PORTO ERCOLE

Landscapes of undulating hills covered in lush meadows, streets with colourful houses, and picturesque paths shaded by pines... Porto Ercole is a concentration of all of Tuscany’s beauty. And what would it be without a fascinating, mystery-filled history? Overlooked by its 16th century fortress, this small village is renowned for having witnessed the final days of the famous painter Caravaggio, said to be buried there. On the Monte Argentario peninsula, you might get the chance to meet the fishermen of the Orbetello Lagoon, classed as a natural reserve, who perpetuate traditional fishing methods, or meet local wine, olive oil and cheese producers. For our sportier guests, the surrounding wild and pristine nature will provide the opportunity for a hike along the island’s heights to enjoy breathtaking views.

Day 8 GIGLIO

The Small Cruise Ship Collection
www.small-cruise-ships.com

01432 507 280 (within UK)

info@small-cruise-ships.com | small-cruise-ships.com



The Small Cruise Ship Collection

www.small-cruise-ships.com

small-cruise-ships.com

info@small-cruise-ships.com

Day 9 PORTOFINO

Close to the Cinque Terre, Portofino is the jewel of the Ligurian Riviera. This "small village that stretches like a half moon around a silent basin", described by Guy de Maupassant, is today a pretty, lively little port that has managed to preserve the authenticity of its maritime traditions, which have been recognised since Ancient times. Built in the hollow of a small natural cove sheltered by the pine forest, the village is at the heart of a protected maritime reserve. The shimmering colours of its house fronts and the exceptional location of this village have inspired many authors and artists. You will also see the Portofino lighthouse, immaculate in its green setting. Perched on the Punta del Capo, it watches over the peninsula and its postcard setting.

out opposite the baie des Anges. The Château hill is also a very pleasant place to walk. This is the entrance to the old city, with its bustling markets and regional products along the main street, the Cours Saleya.

Please Note:

Itineraries are subject to change.

Day 10 CALVI, CORSICA

Nestled on a rocky spur in the north-west of Corsica, the port of Calvi offers its whiteness between two sapphire-coloured bays. Capital of the Balagne region, the Genoese city benefits from an exceptional natural setting between the abrupt relief of the central chain, fertile hills and long sandy beaches. From the promontory of the Notre-Dame-de-la-Serra chapel, built in the 19th century on the ruins of a 15th century sanctuary, you will not miss the sublime panorama of the seaside, the mountains and the Calvi citadel. A little further west, you will have the opportunity to discover with the peninsula of Revelatta, a wilder and more preserved part of Corsica.

Day 11 NICE

Capital of the Cote d'Azur, Nice is surrounded by an amphitheatre of hills and mountains that protects it from the wind. You will probably want to explore the Promenade des Anglais, where you can sit on one of the famous blue chairs laid



The Small Cruise Ship Collection

www.small-cruise-ships.com

small-cruise-ships.com

info@small-cruise-ships.com

YOUR SHIP: LE BOUGAINVILLE

YOUR SHIP:

Le Bougainville

VESSEL TYPE:

LENGTH:

PASSENGER CAPACITY:

BUILT/REFURBISHED:

Featuring innovative and environmentally-friendly equipment, elegantly designed cabins, spacious suites with large windows, and lounge areas that open onto the outside, this new limited-capacity yacht boasting just 92 cabins and suites will offer you a truly unique cruising experience. As the first ship in a new series that remains true to the Ponant spirit, Le Bougainville will embody the unique atmosphere that is the cruise line's hallmark: a subtle blend of refinement, intimacy and comfort. Aboard this ship that flies the French flag, you will experience the incomparable pleasure of an intimate cruise, with the possibility of exploring an ever-increasing range of destinations in an ethnic-chic ambiance with luxury service. Experience a luxurious setting where the accent is on authenticity and passion for travel. **RESTAURANTS** As it is an essential part of French culture, gastronomy will naturally have pride of place aboard this new ship. Through its two restaurants, Le Bougainville will invite you on a journey to elegance and epicureanism. In a relaxed atmosphere, a first dining area located on Deck 3 and able to seat 70 will serve grilled meats daily, along with a variety of salads and desserts. To the back of Deck 4, you will find a 260 m² panoramic restaurant which can accommodate all of

our passengers in a single sitting. Designed differently to that on our other ships, this dining area, which opens onto the outside, will have a buffet of salads, desserts and cheeses at your disposal. Our discreet and attentive crew will provide table service for hot meals. **PUBLIC AREAS** Like Le Boreal and its sisterships, Le Bougainville has many common areas that are designed and equipped to meet all of your needs while preserving the intimacy of each passenger. A 140 m² reception area includes: A reception/concierge desk, An excursions desk, The ship's administrative services, The sales office, manned by our Guest Relations Officer, Our 50 m² boutique which sells clothing, jewellery, beauty products, postcards and various accessories, Toilets accessible to passengers with reduced mobility. A new hydraulic platform with adjustable height provides: Easier boarding than on any other cruise ship, Easier Zodiac embarkation and disembarkation for expeditions, Easier access to the sea for swimming and practising various water sports such as kayaking or paddle-boarding. A pool deck offering: A pool with a panoramic view, equipped with a counter-current swimming system, A pleasant solarium, An outdoor bar and lounge with armchairs and sofas. A 200 m² main lounge which can accommodate all of our passengers to share convivial moments and to host activities organised during the day or evening. Lastly, a theatre that seats 188, equipped with: The latest sound and lighting technology, A LED wall as the stage backdrop, for the projection of high-resolution images and videos. Please click the following links to read more about Ponant and the other Ponant

The Small Cruise
Ship Collection
www.small-cruise-ships.com

01432 507 280 (within UK)

info@small-cruise-ships.com | small-cruise-ships.com



The Small Cruise Ship Collection

www.small-cruise-ships.com

small-cruise-ships.com info@small-cruise-ships.com



cruise ships.

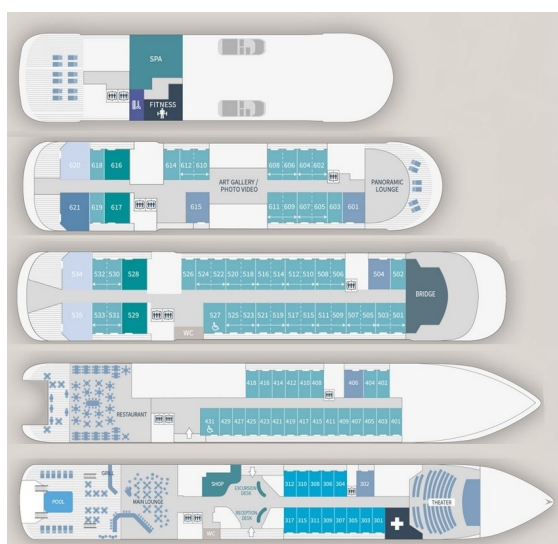
The Small Cruise Ship Collection

www.small-cruise-ships.com

small-cruise-ships.com

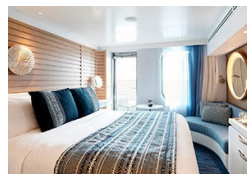
info@small-cruise-ships.com

INSIDE YOUR SHIP

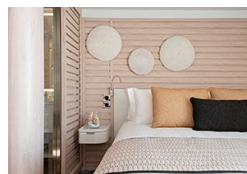


- Owner's Suite Deck 6
- Privilege Suites Deck 5-6
- Grand Deluxe Suites Deck 5-6
- Prestige Suites Deck 5-6
- Deluxe Suites Deck 5-6
- Prestige Cabins Deck 4-5-6
- Deluxe Cabins Deck 3

Deluxe Stateroom



Deluxe Suite



Grand Deluxe Suite



Owner's Suite



Prestige Stateroom Deck 4

Prestige Stateroom Deck 5

Prestige Stateroom Deck 6

Prestige Suite Deck 5

Prestige Suite Deck 6

Privilege Suite

The Small Cruise Ship Collection

www.small-cruise-ships.com

01432 507 280 (within UK)

info@small-cruise-ships.com | small-cruise-ships.com



The Small Cruise Ship Collection

www.small-cruise-ships.com

small-cruise-ships.com

info@small-cruise-ships.com

PRICING

30-Jul-2024 to 09-Aug-2024

| | |
|---------------------------|---------------|
| Prestige Suite Deck 5 | £14466 GBP pp |
| Grand Deluxe Suite | £17654 GBP pp |
| Owner's Suite | £18579 GBP pp |
| Prestige Stateroom Deck 6 | £7456 GBP pp |
| Deluxe Suite | £10566 GBP pp |
| Prestige Stateroom Deck 5 | £7020 GBP pp |
| Privilege Suite | £16026 GBP pp |
| Prestige Stateroom Deck 4 | £6671 GBP pp |
| Prestige Suite Deck 6 | £15241 GBP pp |
| Deluxe Stateroom | £5964 GBP pp |

| | |
|---------------------------|---------------|
| Owner's Suite | £18579 GBP pp |
| Privilege Suite | £16026 GBP pp |
| Prestige Suite Deck 6 | £15241 GBP pp |
| Grand Deluxe Suite | £17654 GBP pp |
| Prestige Stateroom Deck 5 | £7020 GBP pp |
| Prestige Stateroom Deck 4 | £6671 GBP pp |
| Deluxe Suite | £10566 GBP pp |
| Prestige Suite Deck 5 | £14466 GBP pp |
| Prestige Stateroom Deck 6 | £7456 GBP pp |
| Deluxe Stateroom | £5964 GBP pp |

09-Aug-2024 to 19-Aug-2024

| | |
|---------------------------|---------------|
| Privilege Suite | £16031 GBP pp |
| Deluxe Suite | £10576 GBP pp |
| Grand Deluxe Suite | £17664 GBP pp |
| Deluxe Stateroom | £5964 GBP pp |
| Owner's Suite | £18584 GBP pp |
| Prestige Stateroom Deck 5 | £7030 GBP pp |
| Prestige Suite Deck 6 | £15251 GBP pp |
| Prestige Stateroom Deck 4 | £6671 GBP pp |
| Prestige Suite Deck 5 | £14476 GBP pp |
| Prestige Stateroom Deck 6 | £7456 GBP pp |

19-Aug-2024 to 29-Aug-2024



The Small Cruise Ship Collection

www.small-cruise-ships.com

small-cruise-ships.com

info@small-cruise-ships.com

PRICING

29-Aug-2024 to 08-Sep-2024

| | |
|---------------------------|---------------|
| Prestige Suite Deck 6 | £15241 GBP pp |
| Prestige Stateroom Deck 4 | £6671 GBP pp |
| Privilege Suite | £16026 GBP pp |
| Deluxe Suite | £10566 GBP pp |
| Prestige Stateroom Deck 5 | £7020 GBP pp |
| Deluxe Stateroom | £5964 GBP pp |
| Grand Deluxe Suite | £17654 GBP pp |
| Prestige Suite Deck 5 | £14466 GBP pp |
| Prestige Stateroom Deck 6 | £7456 GBP pp |
| Owner's Suite | £18579 GBP pp |

ADDITIONAL CHARGES:

Port Taxes & Fees 740 AUD pp



The Small Cruise Ship Collection

www.small-cruise-ships.com

01432 507 280 (within UK)

info@small-cruise-ships.com | small-cruise-ships.com