



## KIMBERLEY SNAPSHOT CRUISE

For those pressed for time - here is the flagship Kimberley Ultimate itinerary condensed into a single week voyage! The Snapshot itinerary features several Kimberley icons including the King George Falls, the Hunter River, the Prince Regent River, Montgomery Reef and the Horizontal Waterfalls.



### ITINERARY

#### Day 1 Broome

Your “welcome aboard” the magnificent TRUE NORTH is in the pearling port of Broome. Embarkation is at 1700 – time for a cocktail with your fellow adventurers before departing at approximately 1830. Dinner is served shortly after leaving port for the overnight cruise to Yampi Sound.

#### Day 2 The Horizontal Falls

Awake to the majestic Kimberley and savour an irresistible TRUE NORTH breakfast as we glide past Cockatoo and Koolan Islands – our attentive crew will be happy to introduce the colourful histories of both! Then it’s time to ‘personally’ introduce you to a Kimberley icon – The Horizontal Falls. Experience the awesome power of the region’s huge tidal range in an exhilarating tender ride and then climb aboard your air conditioned helicopter for a



## The Small Cruise Ship Collection

[www.small-cruise-ships.com](http://www.small-cruise-ships.com)

[small-cruise-ships.com](http://small-cruise-ships.com)

[info@small-cruise-ships.com](mailto:info@small-cruise-ships.com)

view of the falls that very few experience! Take a refreshing swim and then walk on the squeaky white sands of Silica Beach. Or join one of the adventure boats on a sightseeing expedition to Whirlpool Pass, an aptly named further demonstration of the Kimberley's powerful tides. Before you know it, your first day onboard will be coming to an end – but there's still time to select a fine wine and to enjoy a leisurely evening meal as we cruise to Doubtful Bay.

### Day 3 Sale River

This morning is devoted to exploring the Sale River. Join naturalists and adventurers alike as we 'ride the tide' on a classic river expedition! For those who can't wait one minute longer, the mouth of the Sale offers the first opportunity to 'land a barra'! Or, take-off for a heli-fishing adventure to a rarely fished spot where the fresh meets the salt! Enjoy lunch as we weigh anchor and cruise for another Kimberley icon – Montgomery Reef! Montgomery is a unique eco-system that must be seen to be believed – and see it you will – as 140 square miles of coral reef rises out of the ocean right before your very eyes! Water cascades from the reef as the tide falls exposing a privileged glimpse of another world! Turtles, dugong, crocodiles and every imaginable sea creature abound and the helicopter puts all in perspective!

### Day 4 Prince Regent River

The scenery will astound and there are some not-to-be-missed fishing spots as the TRUE NORTH graces the majestic Prince Regent River. This morning's target species include delectable mangrove jack and fingermark bream. At King Cascade we will manoeuvre the TRUE NORTH right under the falls. Then it's time for more 'adventure in the tender' – a chance to stretch the laces on your hiking boots and an opportunity to swim in yet

another picture perfect billabong, or perhaps you'd like to venture further upriver to visit the spectacular 'Amphitheatre' waterfall. The helicopter will be popular again when the first group of intrepid explorers returns from Jurassic Park!

### Day 5 Hunter River

If you think the Regent was good – wait till you see the Hunter! With stunning red cliffs set behind rainforest and mangroves – the Hunter River is yet another awesome setting for fishing, mud crabbing, bird watching and just simply exploring! Enjoy an exhilarating hike to the hidden Jackson Falls and there's even more splendour from the helicopter! Hopefully we'll have time for a sunset drink on Naturaliste Island before an overnight cruise to Vansittart Bay.

### Day 6 Bradshaws

Today there will be an opportunity to see the "Bradshaws" – ancient rock art that pre-dates other examples of Aboriginal culture. In fact, they are possibly the oldest 'paintings' known to man. Vansittart Bay also has a reputation for producing monster mackerel! The heli-picnic at Eagle Falls is always a 'big hit' – enjoy a sumptuous picnic lunch amidst breathtaking scenery. The tenders will also be busy exploring the local beaches and creeks. Overnight we cruise to Koolama Bay.

### Day 7 The King George

Yet another mighty Kimberley river – The King George! As soon as the tide is high enough, we'll cross the sand bars at the mouth to reveal even more breathtaking river vista. Then our journey upstream will take us to the very 'jewel in the crown' – The King George Falls. Here we anchor at the base of the Twin Falls and you will find endless places to explore. Climb, or take the helicopter, to the top of the falls for a cruise highlight. Just

The Small Cruise Ship Collection  
[www.small-cruise-ships.com](http://www.small-cruise-ships.com)

01432 507 280 (within UK)

[info@small-cruise-ships.com](mailto:info@small-cruise-ships.com) | [small-cruise-ships.com](http://small-cruise-ships.com)



the thought of leaving this magnificence will inspire mutiny!  
Learn about the bombing of a state-ship during WWII, then take  
a stroll at Tranquil Bay before we continue onto the frontier port  
of Wyndham.

#### Day 8 Kununurra

Your courtesy coach will arrive at approximately 0800 hours for  
transfer to Kununurra and your crew will already be looking  
forward to the next opportunity to welcome you aboard the  
mighty TRUE NORTH!

#### Please Note:

Itineraries are subject to change.



# The Small Cruise Ship Collection

[www.small-cruise-ships.com](http://www.small-cruise-ships.com)

[small-cruise-ships.com](http://small-cruise-ships.com)

[info@small-cruise-ships.com](mailto:info@small-cruise-ships.com)

## YOUR SHIP: TRUE NORTH

**YOUR SHIP:**

**True North**

**VESSEL TYPE:**

**LENGTH:**

**PASSENGER CAPACITY:**

**BUILT/REFURBISHED:**

The TRUE NORTH allows discerning adventurers to experience wilderness in surroundings more akin to one of the world's most exclusive hotels. Guests are able to take advantage of a number of lavish vantage points including a sundeck, a forward observation lounge, a ship's lounge and an alfresco bar. The ship's naturalist presents interpretative information on plasma screens and, an internet cafe enables convenient communication with the outside world. A popular venue on any North Star cruise, the lower deck dining room offers the ultimate in comfort and uninterrupted vista - large panoramic windows ensure that guests never miss any of the action, even when they are enjoying the 'finest in fine dining'. All cabins feature stylish decor, en-suite facilities, in-house entertainment and satellite telephones. The Explorer Class staterooms and the River Class cabins offer king size beds that can be converted to singles and the Ocean Class twins feature roomy single beds. Multiple expedition boats provide guests with greater opportunity to do "what they want, when they want" and, to add yet another dimension to adventure, most cruise options feature an onboard helicopter! The purpose built TRUE NORTH is able to explore the upper reaches of shallow river systems - guests need only step

out of their cabins to experience wilderness and, the latest in computer controlled motion stabilizers ensures a



comfortable ride.

# The Small Cruise Ship Collection

www.small-cruise-ships.com

small-cruise-ships.com

info@small-cruise-ships.com

## INSIDE YOUR SHIP

### Upper Deck

#### Explorer Class

1. Bradshaw
2. Dampier
3. Durack
4. Parker King



### Main Deck

#### River Class & Ocean Class

5. Prince Regent River
6. Mitchell River
7. Berkeley River
8. Drysdale River
9. Hunter River
10. King George River
11. Camden Harbour
12. Lacepede Islands



### Lower Deck

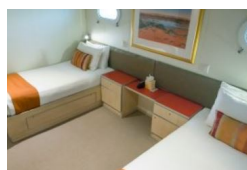
#### Ocean Class

13. Koolama Bay
14. Montgomery Reef
15. Jackson Falls
16. Kings Cascade
17. Imperieuse Reef
18. Atlantis Bay



### Explorer Class - Stateroom

### Ocean Class - Twin



### Ocean Premium Cabin

### Ocean/River Premium Cabin



The Small Cruise Ship Collection

www.small-cruise-ships.com

01432 507 280 (within UK)

info@small-cruise-ships.com | small-cruise-ships.com

# The Small Cruise Ship Collection

www.small-cruise-ships.com

small-cruise-ships.com

info@small-cruise-ships.com

## PRICING

### 26-Jul-2025 to 02-Aug-2025

River Class - Double	£12237 GBP pp
Explorer Class - Stateroom	£13257 GBP pp
Ocean Premium Cabin	£10962 GBP pp
Ocean Class - Twin	£9483 GBP pp

### 16-Aug-2025 to 23-Aug-2025

River Class - Double	£12237 GBP pp
Ocean Premium Cabin	£10962 GBP pp
Explorer Class - Stateroom	£13257 GBP pp
Ocean Class - Twin	£9483 GBP pp

### 30-May-2026 to 06-Jun-2026

Explorer Class - Stateroom	£14789 GBP pp
Ocean/River Premium Cabin	£12239 GBP pp
Ocean Class - Twin	£10505 GBP pp
River Class - Double	£13565 GBP pp

### 20-Jun-2026 to 27-Jun-2026

Explorer Class - Stateroom	£14789 GBP pp
Ocean/River Premium Cabin	£12239 GBP pp
Ocean Class - Twin	£10505 GBP pp
River Class - Double	£13565 GBP pp

### 11-Jul-2026 to 18-Jul-2026

Ocean/River Premium Cabin	£12239 GBP pp
Ocean Class - Twin	£10505 GBP pp
River Class - Double	£13565 GBP pp
Explorer Class - Stateroom	£14789 GBP pp

### 01-Aug-2026 to 08-Aug-2026

Ocean Class - Twin	£10505 GBP pp
Explorer Class - Stateroom	£14789 GBP pp
Ocean/River Premium Cabin	£12239 GBP pp
River Class - Double	£13565 GBP pp

### 22-Aug-2026 to 29-Aug-2026

Ocean Class - Twin	£10505 GBP pp
Explorer Class - Stateroom	£14789 GBP pp
Ocean/River Premium Cabin	£12239 GBP pp
River Class - Double	£13565 GBP pp