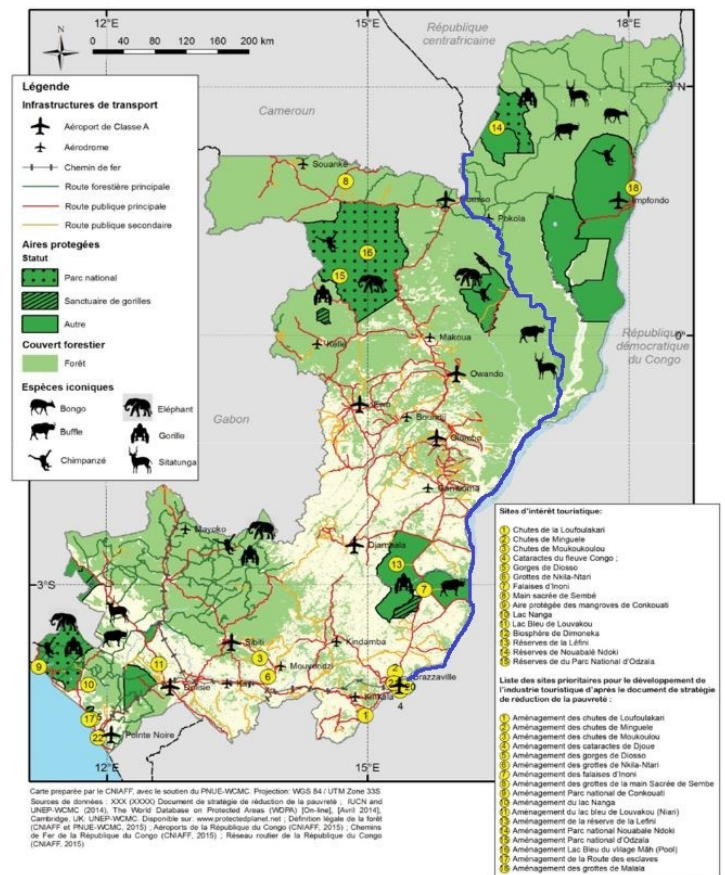




CONGO RIVER SAFARI CRUISE OUESSO TO BRAZZAVILLE

After a flight over the Canopy in a private plane, we will embark on an extraordinary 12-night Safari cruise on the Sangha and Congo rivers. Over nearly 1 000 km, we will navigate through cathedral forests populated by thousands of gorillas, chimpanzees, forest elephants, bongos, buffaloes and more than 350 species of birds. Our descent will take us towards the swampy forests at the mouth of the Sangha, then the green hills of the Pool. The peoples of the forest will be our guides. We will share their way of life and their unique knowledge transmitted for centuries. In the evening, in the calm of our comfortable ship, while sipping a glass of wine, we will discuss the major issues of preservation, the history of the Congo, & the history of it's people. We will land on the 13th day in Brazzaville, capital of the Republic of Congo, city of Rumba, sappers and the artistic school of Poto-Poto. The journey is over, what we saw, probably few people had the chance to see.



ITINERARY

Day 1 Brazzaville

Arrive in the city of Brazzaville in Republic of Congo in the afternoon. Night in a 5 star hotel, dinner at the hotel.



The Small Cruise Ship Collection

www.small-cruise-ships.com

small-cruise-ships.com

info@small-cruise-ships.com

Day 2 Fly to Ousso - Embark

In the morning a one hour flight in a 19 seats jet, plus 5 hours drive to Ouesso . Through the portholes, we can see all the primary forest. Such view of one of the largest primary forest of the world will stay in our memory for always. Embarkment during the afternoon. Then we ascend the Sangha River, slaloming between the sandbanks with caution. The depth decreases. Conference about Congo Basin Ecosystem.

Days 3 - 5 Nouabalé-Ndoki National Park

Immersion in the Sangha. Classified as a World Heritage Site since 2012, the National Tri of the Sangha is in the north-west of the Congo Basin, at the meeting point of Cameroon, Congo and the Central African Republic, the site includes three adjoining national parks, covering a total area of 750,000 hectares, affected very little by human activity. It covers the entire spectrum of tropical rainforest ecosystems. The rich fauna and flora include Nile crocodiles, goliath tigerfish & large predators. The clearings offer herbaceous species, the Sangha is home to considerable populations of forest elephants, as well as western lowland gorillas and chimpanzees. To be as discreet as possible, our group will be divided into three subgroups. Three groups of 9 people will explore the Nouabalé-Ndoki National Park. (Each group will make the excursions below but in a different order). Depart in the morning to join the scientific camp of Mondika in the Triangle of Djeke (1 hour by car, 2 hours of walking) to track the lowland gorillas. We will observe them from about ten meters away and they will observe us. The young bicker and the females feed, others rest, the silverback

lurks. The largest measure up to 1.70 meters. In order not to disturb them, after an hour we will leave, with images in our heads. On the trail we can come across many other animals, we will be accompanied by trackers. In the evening, we will spend the night in the camp near the scientists' camp and have plenty of time to ask questions. The night will be spent in safari tent with bed, shower and individual dry toilet. Departure at dawn for a 6-hour expedition to the Bai de Mbeli (40 minutes by car, 1 hour by canoe). In this clearing it is the gathering place of hundreds of animals, attracted by the mineral-rich waters. We discover from the top of a viewpoint the breathtaking spectacle of wildlife: lowland gorillas, forest elephants, chimpanzees, bush hogs, bongos, sitatungas and forest buffaloes. We will spend the morning there to observe the animals. The more adventurous can arrive the day before and spend the night.

Day 6 Sangha River

We descend the Sangha River towards Pokola where we meet representatives of a forestry company, who explain to us the sustainable management of forests. At the end of the day, our ship reaches the Ndoki river, we observe hippos. Not far away, a pygmy village. Conference on pygmy populations facing modernism.

Day 7 Mangui

In the morning, we go up a tributary of the Sangha for about fifteen kilometres, the Mangui. We follow the northern border of the Ntokou-Pikounda park. This is frequented by an endemic species that was thought to be extinct, Bouvier's red colobus, a



The Small Cruise
Ship Collection

www.small-cruise-ships.com

small-cruise-ships.com

info@small-cruise-ships.com

small monkey with orange fur. Along the way, we observe birds.

Day 8 Pikounda

We pass the village of Pikounda towards a pygmy village. The Pygmies are one of the two peoples living in this region. They are among the last groups of hunter-gatherers in the world. In the forest, in small groups, we share their daily life: harvesting plant products, collecting medicinal plants, fishing. We share their millennial way of life and discover their incredible symbiosis with the forest. Dinner and evening in a clearing. The pygmies are with us. They tell the stories of their people and the stories born during their time together. With the help of mimes and songs, the stories live and the evening is anchored forever in the memories. The oral tradition of the pygmies is one of the finest riches of this people.

Day 9 Sangha River

We descend the Sangha River weaving through the green and impenetrable swamp forest. We are entering a very sparsely populated and wildest territories. We meet fishermen, the Sangha-sangha people. We take the tributaries, either by canoe or by motorboat. It is said that in the distance a dinosaur was seen: the Mokele Mbembe. In the tropical forest, we discover the plants of pharmacology. With those who wish can go fishing. During the day, we cross the equator. This is the baptism of the Line!

Day 10 Mossaka

The Sangha River empties into the Congo. We reach the fishing village of Mossaka, known throughout the country for its smoked fish. We discover vestiges of the colonial era, with the colonial house of Mr. Trechot. We gradually leave the forest for hills covered with grass. Conference on the Savorgnan de Brazza expedition and the Stanley expedition.

Day 11 Congo River

The Congo River widens considerably (more than 10 km) and a hodgepodge of islands are formed. Fishing villages settle there during the dry season. At the end of the day, we reach the Lefini estuary which borders the Teke kingdom. Hippos bask.

Day 12 Ngabe

In the morning, we discover the village of Ngabe, one of the ancient capitals of the Teke kingdom. We go up the village and will visit the current Queen Ngalifourou. In her capacity as guardian of the "Nkwembali", spiritual god of the Bateke, she is the person authorized to transmit power to the new king, the Makoko. He is a very influential person in the Teke kingdom, one of the most powerful kingdoms of the country. We attend a traditional Teke dance, we observe. Conference on the Teke kingdom and on the history of the Congo.

Day 13 Brazzaville



The Small Cruise
Ship Collection

www.small-cruise-ships.com

01432 507 280 (within UK)

info@small-cruise-ships.com | small-cruise-ships.com



The Small Cruise
Ship Collection

www.small-cruise-ships.com

small-cruise-ships.com

info@small-cruise-ships.com

Arrival in Brazzaville.

Disembarkment around 10am.

Visit of the Plateau market (traditional objects and handicrafts), the artistic school of Poto Poto, the Congo Basin museum, meeting with La Sape - Society of Ambiance-Makers and Elegant People.

Departure in the evening.

Please Note:

Itineraries may be subject to change due to weather conditions, low water levels, administrative constraints or access restrictions imposed by the State or national parks. Therefore, sailing times and excursions may be modified at the captain's discretion. We will do everything we can to minimize disruption to travel plans. An alternative route will be proposed after consultation between the captain of the ship and the management of the company if necessary. If the airline is unable to operate the flight Brazzaville - Ouessou or Ouessou - Brazzaville and in the absence of other reasonable air alternatives, the transfer may be provided by road.



The Small Cruise
Ship Collection

www.small-cruise-ships.com

01432 507 280 (within UK)

info@small-cruise-ships.com | small-cruise-ships.com



The Small Cruise Ship Collection

www.small-cruise-ships.com

small-cruise-ships.com

info@small-cruise-ships.com

YOUR SHIP: RV DUCRET - CONGO

YOUR SHIP:

RV Ducret - Congo

VESSEL TYPE:

LENGTH:

PASSENGER CAPACITY:

BUILT/REFURBISHED:

The ship was built in a Belgian run shipyard in Kinshasa in 2017. It takes the form of the passenger ships that have for decades transported passengers on the Congo River and its tributaries between the different capitals of Central Africa. With a robust steel construction, she is powered by two new-generation 380 HP Caterpillar engines, thus reducing noise pollution and fuel consumption. Its draft of 90 centimeters allows it to navigate easily on shallow rivers. In 2022/2023, she was refitted to launch the first 4 safari cruises in the heart of one of the most mysterious forests in the world, the Congo Basin forest. Its renovation into a comfortable 4-star Boutique Hotel Ship launches a new era for the development of sustainable tourism in the Republic of Congo (Congo Brazzaville). In June 2023 she began the first cruises on the Congo and Sangha rivers, thus reviving the long tradition of river navigation in the Congo. ON BOARD LIVING AND SOCIAL AREAS :600 m² of common areas Dining room Indoor bar and lounge Outdoor lounge Outdoor jacuzzi Massage Room Observation Deck WORLD CLASS DINING PROGRAM A culinary experience nourished by African and European influences A menu specially prepared by a French Chef rewarded for his work with a Michelin

star in 2021 Local products and fine wine. LAUNCH BOATS FOR SHORE EXCURSIONS Two auxiliary aluminum launch boats equipped with four-stroke low emission engines. Each boat has a capacity of 15 passengers. Kayaks for two people Accommodation Passengers are accommodated in 14 Design cabins across three decks. Owner's Suite 35 m². Observation deck. Private balcony (9m²) : Three windows, armchair, writing desk and chair, two bedside tables, sofa, and a closet. Bathroom. Air-conditioning. 1 cabin with two single beds that can convert to a queen. 1 cabin with one queen bed. (401, 402) Forward Master Suite 23 m². Second Deck Forward. Public balcony : Four windows, armchair, writing desk and chair, two bedside tables, and a closet. Bathroom. Air-conditioning. 2 cabins with queen beds. (201, 202) Master Suite 27 m². Second Deck. Public balcony : Three windows, armchair, writing desk and chair, two bedside tables, sofa, and a closet. Bathroom. Air-conditioning. 1 cabin with two single beds that can convert to a queen. 1 cabin with one queen bed. (203, 204) Deluxe Suite 18 m². Second Deck. Public balcony : Two windows, armchair, writing desk and chair, two bedside tables, and a closet. Bathroom. Air-conditioning. 2 cabins with two single beds that can convert to a queen. 4 cabins with queen beds. (205, 206, 207, 208, 209, 210) Classic Cabin 12 m². First Deck. Public balcony : One window, armchair and a closet. Bathroom. Air-conditioning. 2 cabins with two single beds

The Small Cruise Ship Collection
www.small-cruise-ships.com

01432 507 280 (within UK)

info@small-cruise-ships.com | small-cruise-ships.com



The Small Cruise Ship Collection

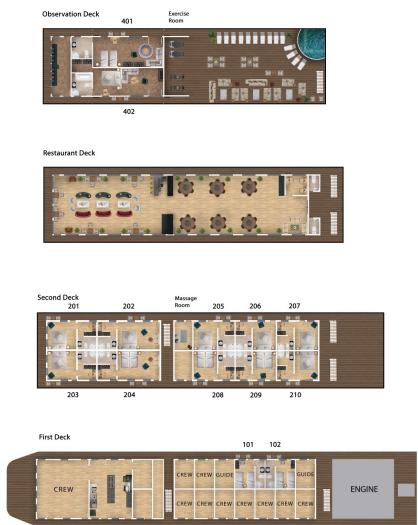
www.small-cruise-ships.com

small-cruise-ships.com info@small-cruise-ships.com

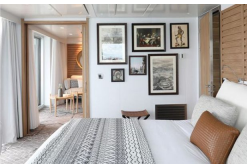
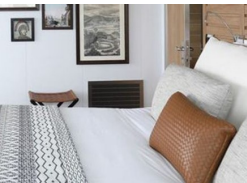


(101, 102)

INSIDE YOUR SHIP



Deluxe Suite



Forward Master Suite



Forward Superior Suite

Forward superior Suite

Owner's Suite

Deluxe Suite Solo occupancy

Forward Suite

Forward Superior Suite Suite 30 m²

Master Suite

Superior Suite



PRICING

12-Jun-2024 to 23-Jun-2024

Deluxe Suite	£5246 GBP pp
Master Suite	£5504 GBP pp
Forward Master Suite	£5676 GBP pp
Forward Master Suite	£6278 GBP pp
Owners Suite	£6794 GBP pp

23-Jun-2024 to 05-Jul-2024

Deluxe Suite	£5246 GBP pp
Master Suite	£5504 GBP pp
Forward Master Suite	£5676 GBP pp
Forward Master Suite	£6278 GBP pp
Owner's Suite	£6794 GBP pp

16-Jul-2024 to 28-Jul-2024

Deluxe Suite	£5246 GBP pp
Master Suite	£5504 GBP pp
Forward Master Suite	£5676 GBP pp
Forward Master Suite	£6278 GBP pp
Owner's Suite	£6794 GBP pp

28-Jul-2024 to 09-Aug-2024

Deluxe Suite	£5246 GBP pp
Master Suite	£5504 GBP pp
Forward Master Suite	£5676 GBP pp
Owners Suite	£6794 GBP pp

11-Aug-2024 to 23-Aug-2024

Deluxe Suite	£5246 GBP pp
Master Suite	£5504 GBP pp
Forward Master Suite	£5676 GBP pp
Forward Master Suite	£6278 GBP pp
Owner's Suite	£6794 GBP pp

29-Sep-2024 to 11-Oct-2024

Deluxe Suite	£5246 GBP pp
Master Suite	£5504 GBP pp
Forward Master Suite	£5676 GBP pp
Forward Master Suite	£6278 GBP pp
Owner's Suite	£6794 GBP pp

22-Oct-2024 to 03-Nov-2024

Deluxe Suite	£5246 GBP pp
Master Suite	£5504 GBP pp
Forward Master Suite	£5676 GBP pp
Forward Master Suite	£6278 GBP pp
Owner's Suite	£6794 GBP pp



PRICING

17-Nov-2024 to 29-Nov-2024

Deluxe Suite	£5246 GBP pp
Master Suite	£5504 GBP pp
Forward Master Suite	£5676 GBP pp
Forward Master Suite	£6278 GBP pp
Owner's Suite	£6794 GBP pp

09-Dec-2024 to 21-Dec-2024

Deluxe Suite	£5246 GBP pp
Master Suite	£5504 GBP pp
Forward Master Suite	£5676 GBP pp
Forward Master Suite	£6278 GBP pp
Owner's Suite	£6794 GBP pp
Deluxe Suite Solo occupancy	£7869 GBP pp

05-Jan-2025 to 17-Jan-2025

Deluxe Suite	£6020 GBP pp
Master Suite	£6880 GBP pp
Forward Master Suite	£6880 GBP pp
Forward Superior Suite	£7310 GBP pp
Superior Suite	£7740 GBP pp
Owner's Suite	£8256 GBP pp

07-Jan-2025 to 19-Jan-2025

Deluxe Suite	£6278 GBP pp
Master Suite	£7095 GBP pp
Forward Master Suite	£7095 GBP pp
Owners Suite	£8256 GBP pp

09-Jul-2025 to 21-Jul-2025

Deluxe Suite	£6020 GBP pp
Forward Master Suite	£6880 GBP pp
Master Suite	£6880 GBP pp
Forward Master Suite	£7310 GBP pp
Forward Master Suite	£7740 GBP pp
Owners Suite	£8256 GBP pp

20-Jul-2025 to 01-Aug-2025

Deluxe Suite	£6020 GBP pp
Forward Master Suite	£6880 GBP pp
Master Suite	£6880 GBP pp
Superior Suite	£7310 GBP pp
Forward Superior Suite	£7740 GBP pp
Owner's Suite	£8256 GBP pp



PRICING

12-Aug-2025 to 24-Aug-2025

Deluxe Suite	£6020 GBP pp
Forward Master Suite	£6880 GBP pp
Master Suite	£6880 GBP pp
Superior Suite	£7310 GBP pp
Forward Superior Suite	£7740 GBP pp
Owner's Suite	£8256 GBP pp

07-Sep-2025 to 19-Sep-2025

Deluxe Suite	£6020 GBP pp
Forward Master Suite	£6880 GBP pp
Master Suite	£6880 GBP pp
Superior Suite	£7310 GBP pp
Forward Suite	£7740 GBP pp
Owner's Suite	£8256 GBP pp

28-Oct-2025 to 09-Nov-2025

Deluxe Suite	£6020 GBP pp
Master Suite	£6880 GBP pp
Forward Master Suite	£6880 GBP pp
Superior Suite	£7310 GBP pp
Forward superior Suite	£7740 GBP pp
Owner's Suite	£8256 GBP pp

16-Dec-2025 to 28-Dec-2025

Deluxe Suite	£6020 GBP pp
Master Suite	£6880 GBP pp
Forward Master Suite	£6880 GBP pp
Superior Suite	£7310 GBP pp
Forward Superior Suite Suite 30 m ²	£7740 GBP pp
Owner's Suite	£8256 GBP pp

ADDITIONAL CHARGES:

Letter of invitation (if required) 60
EUR pp