



The Small Cruise  
Ship Collection

[www.small-cruise-ships.com](http://www.small-cruise-ships.com)



[small-cruise-ships.com](http://small-cruise-ships.com)

[info@small-cruise-ships.com](mailto:info@small-cruise-ships.com)

## ISLANDS & CULTURES OF PAPUA NEW GUINEA - FROM CAIRNS TO MADANG LUXURY CRUISE

Embark on a boutique expedition through Milne Bay, exploring picturesque islands, historical sites, and diverse cultures. Snorkel over a World War II wreck, discover the 'Islands of Love' in the Trobriands, and canoe into the ancient Fiords of Tufi. Immerse in the traditional Morobe culture on remote Tami Islands, unravel Papua New Guinea's wartime role, and dive into the crystal-clear waters of the Solomon Sea. Guided by experts, this journey seamlessly blends comfort, discovery, and cultural enrichment.



### ITINERARY

DAY 1 Embarkation | Cairns, QLD, Australia

Cairns thrives on its tropical climate and has become a hub for travellers seeking to explore the wonders of the Great Barrier Reef and the surrounding Far North Queensland region. The city's strategic location makes it an ideal starting point for marine adventures, with access to the stunning coral reefs and diverse marine life that characterize the Great Barrier Reef.

The Small Cruise  
Ship Collection

[www.small-cruise-ships.com](http://www.small-cruise-ships.com)

01432 507 280 (within UK)

[info@small-cruise-ships.com](mailto:info@small-cruise-ships.com) | [small-cruise-ships.com](http://small-cruise-ships.com)



## The Small Cruise Ship Collection

[www.small-cruise-ships.com](http://www.small-cruise-ships.com)



[small-cruise-ships.com](http://small-cruise-ships.com)

[info@small-cruise-ships.com](mailto:info@small-cruise-ships.com)

PASPALLEY PEARL will be alongside in Cairns.

### DAYS 2-3 Sea Days

A couple of days spent at sea provides an ideal opportunity for contemplation, allowing you to reminisce about the extraordinary moments shared with fellow adventurers. Take a moment for yourself to savour the rare tranquillity of the open sea and connect with your expedition team to discover exciting upcoming adventures on the horizon.

### DAY 4 Samarai Islands, Milne Bay Province, Papua New Guinea

The Samarai islands are located in the China Strait off the south-eastern tip of New Guinea. In its colonial heyday it was said to be one of the most beautiful places in the Pacific. The island was declared a National Historical Heritage Island by the government of Papua New Guinea in 2006. Just 3km west of Samarai, Kwato Island was once an educational centre and home to a thriving boat building industry. Following the old tree-lined road to the top of the island reveals a stonewalled church that was built in 1937 and remains a testimony to the missionaries of a bygone era. Join your expedition team for a guided walk on Samarai island.

### DAY 5 Deboyne Lagoon. Milne Bay Province, Papua New Guinea

Located on the northwestern side of the Louisiade Archipelago bordering the Coral Sea, the Deboyne Islands are located inside the Deboyne Lagoon and are known for their stunning beaches, natural beauty, coral reefs, and the wreck of an A6M2 Zero that sits in 3 metres of water, only 50 metres from the beach. The friendly villagers lead a subsistence lifestyle with minimal influence from the outside world and warmly welcome guests.

### DAY 6 Trobriand Islands. Milne Bay Province, Papua New Guinea

The Trobriand Islands remain one of the most culturally intact places in the Pacific. Their unique social system is dominated by hereditary chieftains who continue to wield tremendous power and influence, although inheritances and lines of power are passed through the female side of the family. Despite the influence of external forces such as missionaries, the traditional dancing in the Trobriand Islands has retained its original sensuality. The dances are a significant aspect of their cultural expression and identity.

### DAY 7 Tufi. Oro Province, Papua New Guinea

Often described as the "Scandinavia of the tropics". The



The Small Cruise Ship Collection

[www.small-cruise-ships.com](http://www.small-cruise-ships.com)

**01432 507 280** (within UK)

[info@small-cruise-ships.com](mailto:info@small-cruise-ships.com) | [small-cruise-ships.com](http://small-cruise-ships.com)



## The Small Cruise Ship Collection

[www.small-cruise-ships.com](http://www.small-cruise-ships.com)



[small-cruise-ships.com](http://small-cruise-ships.com)

[info@small-cruise-ships.com](mailto:info@small-cruise-ships.com)

spectacular Tufi fiords are located along the coast of Cape Nelson at the base of the Owen Stanley Range. They plunge over 90 metres deep and rise over 150 metres vertically above the water making for a spectacular backdrop. The traditional way of life plays a very important role amongst the villagers with many living in isolated areas along the coast. The area is known for its production of tapa cloth, made from the bark of the paper mulberry tree and skilfully decorated.

DAY 8 Morobe Harbour. Morobe Province, Papua New Guinea

Located at the Southern end of the picturesque Huon gulf lies Morobe Harbour. Here, in one of the remotest parts of the Papua New Guinea mainland, culture and tradition remain strong. Several villages are spread along the foreshore amid lush forests where locals can be seen fishing or tending to their communal crops.

DAY 9 Tami Islands, Morobe Province, Papua New Guinea

The Tami Islands (Kalal, Wanam & Idjan) are a small group of uplifted coral atolls, with two main villages on the two larger islands and many smaller reefs and cays. In the centre is a beautiful, crystal clear blue lagoon with abundant marine life and stunning coral formations. The seldom-visited islands are located off the coast not far from the town of Finschhafen. Tami Islanders are renowned artisans and are most famous for their

intricately decorated bowls.

DAY 10 Tuam Island. Morobe Province, Papua New Guinea

Located between the mainland of Papua New Guinea and the island of New Britain. The Siassi archipelago comprises a total of 18 islands, of which only seven are inhabited. The Island of Tuam is a raised coral outcrop and home to a remote community far from the regular tourist routes.

DAY 11 Disembarkation | Madang, Papua New Guinea

Madang Township was once known as the "prettiest town in the South Pacific". Its peninsula setting is a showplace of parks, waterways, luxuriant shade trees and sparkling tropical islands. The diverse geographical nature of Madang province is reflected in the 170 different languages that are spoken. This diversity is showcased in the Madang festival with its colourful displays of "sing sings" performed by numerous cultural groups from across the Madang Province.

PASPALLEY PEARL will be alongside in Madang and disembarkation will commence after breakfast.

Please note:



The Small Cruise Ship Collection

[www.small-cruise-ships.com](http://www.small-cruise-ships.com)

01432 507 280 (within UK)

[info@small-cruise-ships.com](mailto:info@small-cruise-ships.com) | [small-cruise-ships.com](http://small-cruise-ships.com)



# The Small Cruise Ship Collection

[www.small-cruise-ships.com](http://www.small-cruise-ships.com)



[small-cruise-ships.com](http://small-cruise-ships.com)

[info@small-cruise-ships.com](mailto:info@small-cruise-ships.com)

Itineraries are subject to change.



The Small Cruise Ship Collection

[www.small-cruise-ships.com](http://www.small-cruise-ships.com)

**01432 507 280** (within UK)

[info@small-cruise-ships.com](mailto:info@small-cruise-ships.com) | [small-cruise-ships.com](http://small-cruise-ships.com)



The Small Cruise  
Ship Collection

[www.small-cruise-ships.com](http://www.small-cruise-ships.com)



[small-cruise-ships.com](http://small-cruise-ships.com)

[info@small-cruise-ships.com](mailto:info@small-cruise-ships.com)

## YOUR SHIP: PASPALEY PEARL

**YOUR SHIP:** Paspaley Pearl

**VESSEL TYPE:**

**LENGTH:**

**PASSENGER CAPACITY:**

**BUILT/REFURBISHED:**

PASPALEY PEARL marks a milestone in the development of boutique expedition travel, offering a benchmark-setting standard of excellence in the Asia Pacific region. As a modern boutique expedition vessel in the Kimberley featuring private balconies, we have the ability of reaching exotic destinations previously inaccessible by larger vessels. You're invited to ignite your sense of discovery, all whilst travelling in comfort and safety that has been designed to create the smallest possible footprint, with a philosophy of empowering local people and creating ambassadors for the destinations visited. Designed to feel like your home away from home Marrying PASPALEY's heritage of over 80 years in the Kimberley and Northern Australia with PONANT's 35-year history of luxury expedition travel, PASPALEY PEARL emerges as the embodiment of comfort and adventure. Featuring 15 staterooms and suites and hosting a maximum of 30 guests per voyage, PASPALEY PEARL emerges as the newest and only boutique expedition motor yacht in the Kimberley with private balconies. The perfect place to relax while exploring \_Main Dining, Lounge and Bar\_ Nestled on the Ocean Deck is our main dining area, lounge, and bar. As our skilled chefs craft your locally-inspired dinner, take a moment for a

pre-dinner drink before being spoiled with the finest produce Australia has to offer. If you're interested in exploring some of PASPALEY's exquisite offerings, you'll be delighted by their showcase of the world's most beautiful pearls, available for purchase as a cherished memento of your time on board. \_Outdoor Dining, Lounge and Bar\_ When journeying through the tropics, immersing yourself in the outdoors becomes essential. Indulge in breakfast and lunch daily within a relaxed yet refined setting. With two expansive dining tables and abundant lounges, relish the idea of dining amidst the natural surroundings you explore. Craving a refreshing drink after a day of exploration? Our friendly staff at the Outdoor Bar have you covered. The Outdoor Lounge doubles as the perfect space for afternoon briefings with your expedition team, ensuring you receive all the information needed for the following day's adventure. \_Sun Deck Lounge and Jacuzzi\_ Bask in the sunshine on the Sun Deck, furnished with sun beds, lounges, and an 8-person jacuzzi. Whether you prefer reading a book under the shelter of the protective shade cloth or engaging in conversations with newfound friends, the Sun Deck promises a haven of pure relaxation. \_Sunset Lounge\_ Located ahead of the bridge, you can savour panoramic views rivaling those of the captain at the Sunset Lounge. Order a drink from one of the bars downstairs and relax as you witness some of the most breathtaking sunsets you've

The Small Cruise  
Ship Collection

[www.small-cruise-ships.com](http://www.small-cruise-ships.com)

01432 507 280 (within UK)

[info@small-cruise-ships.com](mailto:info@small-cruise-ships.com) | [small-cruise-ships.com](http://small-cruise-ships.com)



# The Small Cruise Ship Collection

[www.small-cruise-ships.com](http://www.small-cruise-ships.com)



[small-cruise-ships.com](http://small-cruise-ships.com)

[info@small-cruise-ships.com](mailto:info@small-cruise-ships.com)



ever seen.



The Small Cruise Ship Collection

[www.small-cruise-ships.com](http://www.small-cruise-ships.com)

01432 507 280 (within UK)

[info@small-cruise-ships.com](mailto:info@small-cruise-ships.com) | [small-cruise-ships.com](http://small-cruise-ships.com)



# The Small Cruise Ship Collection

[www.small-cruise-ships.com](http://www.small-cruise-ships.com)



[small-cruise-ships.com](http://small-cruise-ships.com)

[info@small-cruise-ships.com](mailto:info@small-cruise-ships.com)

## INSIDE YOUR SHIP

Horizon Suite



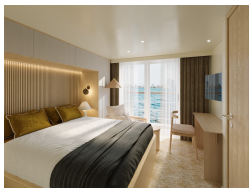
Ocean Stateroom



Ocean Twin Stateroom



Pearl Suite





# The Small Cruise Ship Collection

[www.small-cruise-ships.com](http://www.small-cruise-ships.com)



[small-cruise-ships.com](http://small-cruise-ships.com)

[info@small-cruise-ships.com](mailto:info@small-cruise-ships.com)

## PRICING

09-Oct-2025 to 19-Oct-2025

Ocean Stateroom	£10197 GBP pp
Ocean Twin Stateroom	£9432 GBP pp
Horizon Suite	£12237 GBP pp
Pearl Suite	£14787 GBP pp