



The Small Cruise
Ship Collection

www.small-cruise-ships.com

small-cruise-ships.com

info@small-cruise-ships.com

ISABELA II WESTERN GALAPAGOS ISLANDS 5 DAY ITINERARY

Our Western Galapagos Yacht Itinerary begins with a tour of Santa Cruz Island, home to giant tortoises, and research initiatives focused on conservation and sustainability. The next day, we'll wake up to spectacular Bartolome Island and Santiago Island, each providing gorgeous scenery and captivating moments with the local wildlife, such as penguins! Following that, we're off to the western end of the archipelago, which is home to the largest and youngest islands in the archipelago — Isabela and Fernandina! Here, you'll get a chance to admire the volcanic terrain of the archipelago and check out the wholly unique flightless cormorant.



ITINERARY

DAY 1 Baltra Island & Santa Cruz Island

Baltra Airport (Santa Cruz Island) After landing, we drive to the Itabaca Channel to take a ferry across Santa Cruz Island. A bus ride takes us to a restaurant in the Highlands to enjoy lunch and then continue to Puerto Ayora. Puerto Ayora In Puerto Ayora, we visit the Charles Darwin Research Station and the Giant Tortoise Breeding Center. Later in the afternoon, we stroll along the main street of Puerto Ayora before embarking.

DAY 2 Bartolome Island & Santiago Island

Bartolome Island We start the day with a steep climb up a wooden staircase: the panoramic view from the top is well worth the effort! Following the walk, we take a panga ride around colossal Pinnacle Rock in search of Galapagos penguins and other wildlife. Sullivan Bay (Santiago Island) After lunch, we board the pangas and land at Sullivan Bay. A trail runs along a



The Small Cruise
Ship Collection

www.small-cruise-ships.com

01432 507 280 (within UK)

info@small-cruise-ships.com | small-cruise-ships.com



lava field; this is the perfect place to see and understand the volcanic origin of the Galapagos.

DAY 3 Santa Cruz Island & Santiago Island

Dragon Hill (Santa Cruz Island) After disembarking, our walk passes a brackish-water lagoon frequented by shorebirds, ducks, and American flamingos. After our walk, we can snorkel from the shore. Here, we may spot rays, green turtles, and sharks. Buccaneer Cove (Santiago Island) After lunch, we explore the coastline along the impressive cliffs of Buccaneer Cove. The cove has many marine birds, sea lions, and inter-tidal organisms. Enjoy fantastic natural formations such as "Elephant Rock," and "The Bishop."

DAY 4 Isabela Island & Fernandina Island

Punta Vicente Roca (Isabela Island) We explore the coast by dinghy, seeking out wildlife like Galapagos fur seals, Nazca boobies, flightless cormorants, penguins, and marine iguanas. Back on board, we navigate along the Bolivar Channel. Punta Espinoza (Fernandina Island) Our visitor site of Punta Espinoza is an amazing combination of barren landscapes and abundant wildlife. Spot hawks, penguins, marine iguanas, and the flightless cormorant.

DAY 5 Baltra Island

Our journey ends at Baltra Island, where we transfer to the airport to take the flight back to the mainland.

Please Note:

Itineraries are subject to change.



The Small Cruise Ship Collection

www.small-cruise-ships.com



small-cruise-ships.com

info@small-cruise-ships.com

YOUR SHIP: ISABELLA II

YOUR SHIP:	Isabella II
VESSEL TYPE:	Small Ship
LENGTH:	53.7m
PASSENGER CAPACITY:	40 guests
BUILT/REFURBISHED:	1979 / 2000

The Isabela II cruises offer enriching wildlife encounters whether amid the islands' haunting volcanic landscapes or beneath the waves of its marine reserve, all in the company of passionate, dedicated and expert naturalist guides. The islands' marine life can be appreciated with a snorkel and mask, paddling a kayak or aboard our glass-bottom boat. On board, guests find delicious cuisine, faultless service and excellent facilities, including a Jacuzzi, fitness room, bar and outside deck for _al fresco_ meals, drinks and sunbathing. Her crew has remained virtually unchanged for years, their dedication, attention to detail and passion for service touching every one of her guests.





The Small Cruise Ship Collection

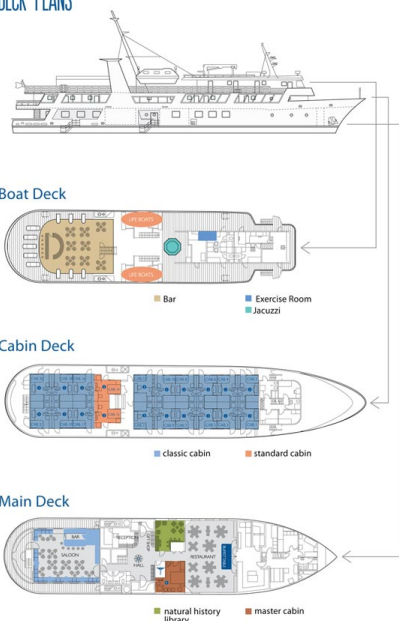
www.small-cruise-ships.com

small-cruise-ships.com

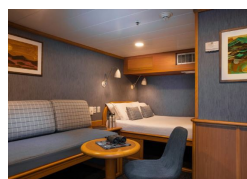
info@small-cruise-ships.com

INSIDE YOUR SHIP

DECK PLANS

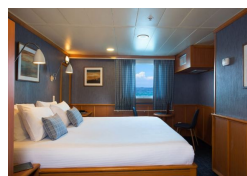


Classic Cabin



Classic Family Cabin

Owner's Cabin



Standard Cabin



The Small Cruise Ship Collection

www.small-cruise-ships.com

01432 507 280 (within UK)

info@small-cruise-ships.com | small-cruise-ships.com



The Small Cruise Ship Collection

www.small-cruise-ships.com

small-cruise-ships.com

info@small-cruise-ships.com

PRICING

23-May-2024 to 27-May-2024

Classic Cabin	£3566 GBP pp
Classic Family Cabin	£3566 GBP pp
Standard Cabin	£3362 GBP pp
Owner's Cabin	£3728 GBP pp

27-May-2024 to 31-May-2024

Standard Cabin	£3362 GBP pp
Classic Cabin	£3566 GBP pp
Owner's Cabin	£3728 GBP pp
Classic Family Cabin	£3566 GBP pp

06-Jun-2024 to 10-Jun-2024

Owner's Cabin	£3728 GBP pp
Standard Cabin	£3362 GBP pp
Classic Cabin	£3566 GBP pp
Classic Family Cabin	£3566 GBP pp

10-Jun-2024 to 14-Jun-2024

Classic Family Cabin	£3566 GBP pp
Classic Cabin	£3566 GBP pp
Standard Cabin	£3362 GBP pp
Owner's Cabin	£3728 GBP pp

20-Jun-2024 to 24-Jun-2024

Standard Cabin	£3362 GBP pp
Classic Family Cabin	£3566 GBP pp
Owner's Cabin	£3728 GBP pp
Classic Cabin	£3566 GBP pp

24-Jun-2024 to 28-Jun-2024

Owner's Cabin	£3728 GBP pp
Standard Cabin	£3362 GBP pp
Classic Family Cabin	£3566 GBP pp
Classic Cabin	£3566 GBP pp

04-Jul-2024 to 08-Jul-2024

Classic Family Cabin	£3566 GBP pp
Standard Cabin	£3362 GBP pp
Owner's Cabin	£3728 GBP pp
Classic Cabin	£3566 GBP pp

08-Jul-2024 to 12-Jul-2024

Standard Cabin	£3362 GBP pp
Owner's Cabin	£3728 GBP pp
Classic Cabin	£3566 GBP pp
Classic Family Cabin	£3566 GBP pp

18-Jul-2024 to 22-Jul-2024

Classic Cabin	£3566 GBP pp
Classic Family Cabin	£3566 GBP pp
Standard Cabin	£3362 GBP pp
Owner's Cabin	£3728 GBP pp



The Small Cruise Ship Collection

www.small-cruise-ships.com

small-cruise-ships.com

info@small-cruise-ships.com

PRICING

22-Jul-2024 to 26-Jul-2024

Classic Cabin	£3566 GBP pp
Owner's Cabin	£3728 GBP pp
Classic Family Cabin	£3566 GBP pp
Standard Cabin	£3362 GBP pp

01-Aug-2024 to 05-Aug-2024

Classic Cabin	£3566 GBP pp
Classic Family Cabin	£3566 GBP pp
Standard Cabin	£3362 GBP pp
Owner's Cabin	£3728 GBP pp

05-Aug-2024 to 09-Aug-2024

Standard Cabin	£3362 GBP pp
Classic Cabin	£3566 GBP pp
Classic Family Cabin	£3566 GBP pp
Owner's Cabin	£3728 GBP pp

15-Aug-2024 to 19-Aug-2024

Classic Family Cabin	£3566 GBP pp
Owner's Cabin	£3728 GBP pp
Standard Cabin	£3362 GBP pp
Classic Cabin	£3566 GBP pp

19-Aug-2024 to 23-Aug-2024

Owner's Cabin	£3728 GBP pp
Classic Family Cabin	£3566 GBP pp
Classic Cabin	£3566 GBP pp
Standard Cabin	£3362 GBP pp

29-Aug-2024 to 02-Sep-2024

Classic Family Cabin	£3566 GBP pp
Owner's Cabin	£3728 GBP pp
Standard Cabin	£3362 GBP pp
Classic Cabin	£3566 GBP pp

02-Sep-2024 to 06-Sep-2024

Owner's Cabin	£3728 GBP pp
Standard Cabin	£3362 GBP pp
Classic Cabin	£3566 GBP pp
Classic Family Cabin	£3566 GBP pp

12-Sep-2024 to 16-Sep-2024

Standard Cabin	£3362 GBP pp
Classic Family Cabin	£3566 GBP pp
Owner's Cabin	£3728 GBP pp
Classic Cabin	£3566 GBP pp

16-Sep-2024 to 20-Sep-2024

Classic Cabin	£3566 GBP pp
Owner's Cabin	£3728 GBP pp
Standard Cabin	£3362 GBP pp
Classic Family Cabin	£3566 GBP pp



The Small Cruise Ship Collection

www.small-cruise-ships.com

small-cruise-ships.com

info@small-cruise-ships.com

PRICING

26-Sep-2024 to 30-Sep-2024

Classic Family Cabin	£3566 GBP pp
Standard Cabin	£3362 GBP pp
Classic Cabin	£3566 GBP pp
Owner's Cabin	£3728 GBP pp

30-Sep-2024 to 04-Oct-2024

Standard Cabin	£3362 GBP pp
Classic Family Cabin	£3566 GBP pp
Classic Cabin	£3566 GBP pp
Owner's Cabin	£3728 GBP pp

10-Oct-2024 to 14-Oct-2024

Standard Cabin	£3362 GBP pp
Classic Family Cabin	£3566 GBP pp
Owner's Cabin	£3728 GBP pp
Classic Cabin	£3566 GBP pp

14-Oct-2024 to 18-Oct-2024

Standard Cabin	£3362 GBP pp
Classic Family Cabin	£3566 GBP pp
Owner's Cabin	£3728 GBP pp
Classic Cabin	£3566 GBP pp

05-Dec-2024 to 09-Dec-2024

Owner's Cabin	£3728 GBP pp
Standard Cabin	£3362 GBP pp
Classic Family Cabin	£3566 GBP pp
Classic Cabin	£3566 GBP pp

09-Dec-2024 to 13-Dec-2024

Classic Family Cabin	£3566 GBP pp
Standard Cabin	£3362 GBP pp
Classic Cabin	£3566 GBP pp
Owner's Cabin	£3728 GBP pp

19-Dec-2024 to 23-Dec-2024

Owner's Cabin	£3728 GBP pp
Classic Cabin	£3566 GBP pp
Classic Family Cabin	£3566 GBP pp
Standard Cabin	£3362 GBP pp

23-Dec-2024 to 27-Dec-2024

Owner's Cabin	£3728 GBP pp
Classic Family Cabin	£3566 GBP pp
Standard Cabin	£3362 GBP pp
Classic Cabin	£3566 GBP pp



The Small Cruise Ship Collection

www.small-cruise-ships.com

01432 507 280 (within UK)

info@small-cruise-ships.com | small-cruise-ships.com